

Product datasheet for **RC206494**

CD5 (NM_014207) Human Tagged ORF Clone

Product data:

Product Type:	Expression Plasmids
Product Name:	CD5 (NM_014207) Human Tagged ORF Clone
Tag:	Myc-DDK
Symbol:	CD5
Synonyms:	LEU1; T1
Mammalian Cell Selection:	Neomycin
Vector:	pCMV6-Entry (PS100001)
E. coli Selection:	Kanamycin (25 ug/mL)



[View online »](#)

ORF Nucleotide Sequence:

>RC206494 ORF sequence
 Red=Cloning site Blue=ORF Green=Tags(s)

TTTTGTAATACGACTCACTATAGGGCGGCCGGAATTCGTCGACTGGATCCGGTACCGAGGAGATCTGCC
 GCC**CGCATCGCC**

ATGCCCATGGGTCTCTGCAACCGCTGGCCACCTTGACCTGCTGGGGATGCTGGTTCCTGCCTCG
 GACGGCTCAGCTGGTATGACCCAGATTTCCAGGCAAGGCTCACCCGTTCCAAGTGAAGTCCAGGCGCA
 GCTGGAGGTCTACCTCAAGGACGGATGGCACATGGTTTGACGCCAGAGCTGGGGCCGGAGCTCCAAGCAG
 TGGGAGGACCCAGTCAAGCGTCAAAGTCTGCCAGCGGCTGAAGTGTGGGGTGCCTTAAGCCTTGGCC
 CCTTCTTGTCACCTACACACCTCAGAGCTCAATCATCTGCTACGGACAAGTGGGCTCCTTCCAAGT
 CAGCCACAGCAGAAATGACATGTGTCACTCTCTGGGCCTGACCTGCTTAGAACCCAGAAGACAACCT
 CCAACGACAAGGCCCGCCACCACAAGTCCAGAGCCACAGCTCCTCCAGGCTGCAGCTGGTGGCAC
 AGTCTGGCGGCCAGCACTGTGCCGGCTGGTGGAGTTCTACAGCGGCAGCCTGGGGGTACCATCAGCTA
 TGAGGCCAGGACAAGACCCAGGACCTGGAGAAGTTCCTCTGCAACAACCTCCAGTGTGGCTCCTTCTTG
 AAGCATCTGCCAGAGACTGAGGCAGGCAGAGCCCAAGACCCAGGGGAGCCACGGGAACACAGCCCTTGC
 CAATCCAATGGAAGATCCAGAAGTCAAGCTGTACCTCCCTGGAGCATTGCTTTCAGAAAAATCAAGCCCCA
 GAAAAGTGGCCGAGTTCTTGCCTCCTTTGCTCAGGTTTCCAGCCCAAGGTGCAGAGCCGCTGTGGTGGG
 GGCAGCAGCATCTGTGAAGGCACCGTGGAGGTGCCAGGGGGCTCAGTGGGCAGCCCTGTGTGACAGCT
 CTTTCAGCCAGGAGCTCGTGCCTGGGAGGAGTGTGCCGGGAGCAGCAGTGTGGCAGCGTCAACTCCTA
 TCGAGTGTGGACGCTGGTGACCAACATCCCGGGGGCTCTTCTGTCCCATCAGAAGCTGTCCAGTGC
 CACGAATTTGGGAGAGAAATTCCTACTGCAAGAAGGTGTTTGTACATGCCAGGATCCAACCCCGCAG
 GCCTGGCCGACGACGGTGGCAAGCATCATCTGGCCCTGGTGTCTCTGGTGGTGTCTGGTGGTGTG
 CGGCCCTTGCCTACAAGAAGCTAGTGAAGAAATTCGCCAGAAAGCAGCGCCAGTGGATTGGCCCA
 ACGGGAATGAACCAAAACATGTCTTTCCATCGCAACCACAGGCAACCGTCCGATCCCATGCTGAGAACC
 CCACAGCCTCCACGTTGGATAACGAATACAGCCAACTCCAGGAACTCCCGCTGTGAGCTTATCCAGC
 TCTGGAAGGGTTCTGCATCGCTCCTCCATGCAGCCTGACAAGTCTCCGACAGTACTATGATCTGCAT
 GGGGCTCAGAGGCTG

ACGCGTACGCGGCCGCTCGAGCAGAAACTCATCTCAGAAGAGGATCTGGCAGCAAATGATATCCTGGATT
 ACAAGGATGACGACGATAAGGTTTAA

Protein Sequence:

>RC206494 protein sequence
 Red=Cloning site Green=Tags(s)

MPMGS LQPLATL YLLGMLVASCLGRLSWYDPDFQARL TRSNKQCGQLEVVYLDKGWHMVCSQSWGRSSKQ
 WEDPSQASKVCQRLNCGVPLSLGPFLVYTPQSSIIICYQLGSFNCNHSRNDMCHSLGLTCLPQKTPP
 PTTRPPPTTTPPTAPPRLQLVAQSGGQHCAGVVEFYSGSLGGTISYEAQDKTQDLENFLCNLQCGSFL
 KHLPETEAGRAQDPGEPREHQPLPIQWKIQNSSCTSLHCFRKIKPKSGRVLALLCSGFQPKVQSRLVG
 GSSICEGTVEVRQGAQWAALCDSSSARSSLRWEVCREQQCGSVNSYRVLDA GDPTSRGLFCPHQKLSQC
 HELWERNYSYKCVFVTCQDPNPAGLAAGTVASIIILALVLLVLLVVCGLAYKLVKFKRQKQRQWIGP
 TGMNQNM SFHRNHTATVRSHAENPTASHVDNEYSQPPRNSRLSAYPALEGVLHRSMSQPDNSSDSYDLH
 GAQRL

TRTRPLEQKLISEEDLAANDILDYKDDDDKV

Chromatograms:

https://cdn.origene.com/chromatograms/mk6231_e09.zip

Restriction Sites:

Sgfl-Mlul

Cloning Scheme:


ACCN: NM_014207

ORF Size: 1485 bp

OTI Disclaimer: The molecular sequence of this clone aligns with the gene accession number as a point of reference only. However, individual transcript sequences of the same gene can differ through naturally occurring variations (e.g. polymorphisms), each with its own valid existence. This clone is substantially in agreement with the reference, but a complete review of all prevailing variants is recommended prior to use. [More info](#)

OTI Annotation: This clone was engineered to express the complete ORF with an expression tag. Expression varies depending on the nature of the gene.

Components: The ORF clone is ion-exchange column purified and shipped in a 2D barcoded Matrix tube containing 10ug of transfection-ready, dried plasmid DNA (reconstitute with 100 ul of water).

Reconstitution Method:

1. Centrifuge at 5,000xg for 5min.
2. Carefully open the tube and add 100ul of sterile water to dissolve the DNA.
3. Close the tube and incubate for 10 minutes at room temperature.
4. Briefly vortex the tube and then do a quick spin (less than 5000xg) to concentrate the liquid at the bottom.
5. Store the suspended plasmid at -20°C. The DNA is stable for at least one year from date of shipping when stored at -20°C.

RefSeq: [NM_014207.2](#), [NP_055022.1](#)

RefSeq Size: 3180 bp

RefSeq ORF: 1488 bp

Locus ID: 921

UniProt ID: [P06127](#)

Cytogenetics: 11q12.2

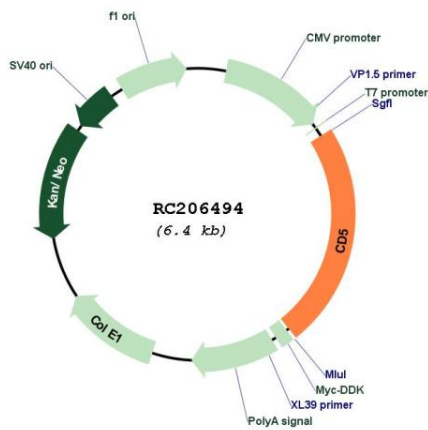
Protein Families: Druggable Genome, Transmembrane

Protein Pathways: Hematopoietic cell lineage

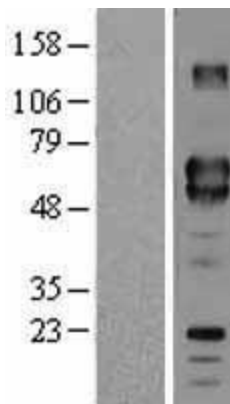
MW: 54.6 kDa

Gene Summary: This gene encodes a member of the scavenger receptor cysteine-rich (SRCR) superfamily. Members of this family are secreted or membrane-anchored proteins mainly found in cells associated with the immune system. This protein is a type-I transmembrane glycoprotein found on the surface of thymocytes, T lymphocytes and a subset of B lymphocytes. The encoded protein contains three SRCR domains and may act as a receptor to regulate T-cell proliferation. Alternative splicing results in multiple transcript variants encoding different isoforms. [provided by RefSeq, Oct 2016]

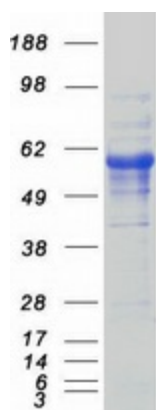
Product images:



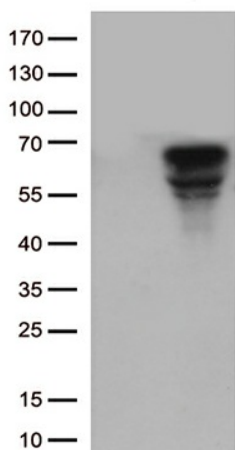
Circular map for RC206494



Western blot validation of overexpression lysate (Cat# [LY415443]) using anti-DDK antibody (Cat# [TA50011-100]). Left: Cell lysates from untransfected HEK293T cells; Right: Cell lysates from HEK293T cells transfected with RC206494 using transfection reagent MegaTran 2.0 (Cat# [TT210002]).



Coomassie blue staining of purified CD5 protein (Cat# [TP306494]). The protein was produced from HEK293T cells transfected with CD5 cDNA clone (Cat# RC206494) using MegaTran 2.0 (Cat# [TT210002]).



HEK293T cells were transfected with the pCMV6-ENTRY control (Cat# [PS100001], Left lane) or pCMV6-ENTRY CD5 (Cat# RC206494, Right lane) cDNA for 48 hrs and lysed. Equivalent amounts of cell lysates (5 ug per lane) were separated by SDS-PAGE and immunoblotted with anti-CD5. (1:5(Cat# [TA802427])). Positive lysates [LY415443] (100ug) and [LC415443] (20ug) can be purchased separately from OriGene.