

## Product datasheet for **RC206488**

### TRIL (NM\_014817) Human Tagged ORF Clone

#### Product data:

Product Type:	Expression Plasmids
Product Name:	TRIL (NM_014817) Human Tagged ORF Clone
Tag:	Myc-DDK
Symbol:	TRIL
Mammalian Cell Selection:	Neomycin
Vector:	pCMV6-Entry (PS100001)
E. coli Selection:	Kanamycin (25 ug/mL)



[View online »](#)

**ORF Nucleotide Sequence:**

>RC206488 representing NM\_014817  
 Red=Cloning site Blue=ORF Green=Tags(s)

TTTTGTAATACGACTCACTATAGGGCGGCCGGAATTCGTCGACTGGATCCGGTACCGAGGAGATCTGCC  
 GCC**CGATCGCC**

ATGGAGGCTGCCCGCCTTGCCTCCTGCTCGTGGTGTGCGGCTGCCTCGCGCTCCCGCCGTGGCCG  
 AGCCCGTGTGCCCGAGCGCTGCGACTGCCAGCATCCCCAGCATCCTGTGCACCAACAGGGGGCTCCG  
 CGTAGTGCCCAAGACCAGCTCGCTGCCGAGCCCCACGACGTGCTCACCTACAGCCTCGGCGGCAACTTC  
 ATAACCAACATCACGGCCTTCGACTTCCACCGTCTGGGGCAGCTCAGACGGCTGGACCTGCAGTACAACC  
 AGATCCGCTCTCTGCACCCCAAGACCTTCGAGAAGCTCTCGCGGCTGGAAGAGCTGTACCTGGGGAACA  
 CCTTTGCAGGCGCTCGCCCCGGGCACGCTGGCCCCGCTGCGCAAGCTGCGCATCCTCTACGCCAACGGG  
 AACGAGATCAGCCGCTAAGCCGCGCTCTTCGAGGGCTGGAGAGTCTAGTCAAGCTGCGGCTGGACG  
 GGAACGCCCTGGGGCGCTGCCGACGCGGTCTTCGCTCCCTGGGCAACCTGCTCTACCTACATCTGGA  
 GTCCAACCGATCCGCTTCTGGGCAAGAAGCGCTTCGCCAGCTAGGCAAGCTGCGCTTCTCAACCTC  
 TCTGCCAACGAGCTACAGCCCTCCTGCGCCACGCGGCCACCTTCGCACCGCTGCGCTCCCTCTCCCTCC  
 TCATCCTCTCGGCAACAACTGCAGCACCTCGGGCCGCGCATCTTCAGCACCTGCCACGTCTCGGCT  
 GCTCTCGCTCAGGGGCAACCAGCTCACGCACCTCGCGCTGAGGCCTTTTGGGGCTTGGAGGCCCTGCGC  
 GAGCTGCGCTGGAGGTAATCGGCTGAGCCAGCTGCCAACTGCGCTGCTGGAGCCTCTGCACAGCCTGG  
 AGGCGCTGGACCTGAGCGGCAATGAGCTGTCCGCCCTGCACCCGGCCACCTTCGGCCACCTGGGCCGGCT  
 GCGCGAGCTCAGCCTGCGCAACAACGCGCTCAGCGCCCTATCCGGGGACATCTTCGCCCGCAGCCAGCC  
 CTTTATCGGCTGGATCTAGACGGCAACGGCTGGACCTGCGACTGCCGGCTGCGAGGCTGAAGCGCTGGA  
 TGGGCAACTGGACTCGCAGGGCCGCTCCTCACTGTCTTCGTGCAAGTGTGCGCACCCCGCCGCTGCG  
 AGGCAAAATACCTGGATTACCTGGATGACCAGCAGCTGCAAAATGGATCCTGCGCGGATCCCTCGCCCTCA  
 GCTTCCCTGACCGCTGACCGCAGGCGGAGCCCTACCCAGGCGCAGGGGAGGAGATGACGCCACCTG  
 CAGGTCTCGCGGAGGAGCTGCCGCCGAGCCGAGCTCCAGCAGCAGGGGCGATTCTAGCTGGGGTGGC  
 CTGGGATGGGGCCGCCAGGGAGCTGGTAGGCAACCGCAGCGCCCTAAGGCTGAGTCGGCGGGGCCGGG  
 CTCCAGCAGCCAGCCCTCCGTCGCTGCCGCCGCGGGCCGGCTCCACAGTCCCTAGACCTGCACAAGA  
 AGCCCCAGCGGGCCGTCGACTCGGGCAGATCCCGCCCTCGCGGAGCCACCCCAACGGCCTCTCCTGG  
 CTCTGCGCCATCGCCCGCGGACCCCTGGCAGCGCGGACGAAGCATCGTCTGGGCACGGAGCACCAG  
 GAGCGTGCCGCCAGTCCGACGGTGGGGCCGGGCTGCCCGGCTGGTGTCCGACCATGCGACTTCAACA  
 AGTTTATTCTGTGCAACCTGACGGTGGAGCGGTGGGCGCAGACAGCGCCTCGGTGCGCTGGGCCGTGCG  
 CGAGCACCGCAGTCCCCGGCCGCTGGGGCGCGCGCTTCCGCCTGCTCTTTGACCGCTTTGGCCAGCAG  
 CCCAAGTTCACCGCTTCGCTACCTGCCTGAGAGCAGGACTCGGCCACGCTGCGCGAGCTGCGCGGGG  
 ACACCCCTACCTGGTGTGCGTGGAGGGCGTGTGGGGCCGTGTCTGCCCTGTGGTCCCCGGGACCA  
 CTGCGCGGGGCTGGTACCCTACCGAGGCCGGGAGCCGGGGCGGCGTACTACAGCTGCTGACCTTG  
 GCCCTGCTGACGGTCAACGCGTGTGGTGTCTCCTGGCCTTGGCGGCTGGGCGTCTCGTGGCTGCGTA  
 GAAACTGCGGGCTAGGCGGAAGGGCGGGGCCCGGTCCACGTTCCGACATGTACTCCACCCGACGGCC  
 CCTGCGTCCATGGGCACCGCGTGTCCGCCGACTTCTCGGATTCCAGTGCACCGGCCACGCACCACC  
 GTGTGCGCGCTCAGTGGGCGGACCTCATCGAATTCCTTCCGACCGCTTCAAGGACAGTGGCGGGCGCG  
 GCGCGGGCGGAGCCTGAGACGGGAGGACCGTCTCCTGCAGGATTTGCCGAC

**ACGCGT**ACGCGGCCGCTCGAGCAGAACTCATCTCAGAAGAGGATCTGGCAGCAAATGATATCCTGGATT  
 ACAAGGATGACGACGATAAGGTTTAA

Protein Sequence: >RC206488 representing NM\_014817  
Red=Cloning site Green=Tags(s)

MEAAARLRLLLVCGCLALPPLAEPVCPERCDCQHPQHLLCTNRGLRVVPKTSSLPSPHDVLTYSLGGNF  
ITNITAFDFHRLGQLRRDLQYNQIRSLHPKTFEKLRLLEELYLGNNLLQALAPGTLAPLRKLRILYANG  
NEISRLSRGSFEGLESVKLRLDGNALGALPDAVFAPLGNLLYLHLESNRIRFLGKNAFAQLGKLRFLNL  
SANELQPSLRHAATFAPLRSLSSLILSANNLQHLGPRIFQHLPRLLSLRGNQLTHLAPEAFWGLEALR  
ELRLEGNRLSQLPTALLEPLHSLEALDLSGNELSALHPATFGHLGRLRELSLRNNALSALSGDIFAASPA  
LYRLDLDGNGWTCDCRLRGLKRWMGDWHSQGRLLTVFVQCRHPPALRGKYL DYLDQQLQNGSCADPSPS  
ASLTADRRRQPLPTAAGEEMTPPAGLAEELPPQPQLQQQGRFLAGVAWDGAARELVGNRSALRRLSRRGPG  
LQQPSPSVAAAAGPAPQSLDLHKKPQRGRPTRADPALAEPTPTASPGSAPSPAGDPWQRATKHLRGTEHQ  
ERAAQSDGGAGLPPLVSDPCDFNKFILCNLTVEAVGADSASVRWAVREHRSPRPLGGARFRLLFDRFGQQ  
PKFHRFVYLPESSDSATLRELRGDTPYLVCVEGVLGGRVCPVAPRDHCAGLVTLPEAGSRGGVDYQLLTL  
ALLTVNALLVLLALAAWASRWLRRKLRARRKGGAPVHVRHMYSTRRPLRSMGTGVSADFSGFQSHRPRTT  
VCALSEADLIEFPCDRFMD SAGGAGGSLRREDRLLQRFAD

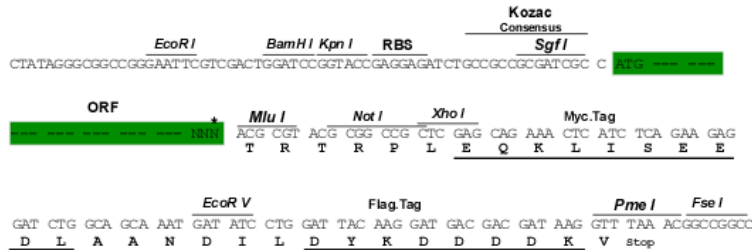
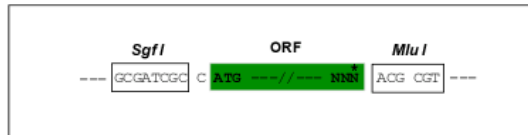
TRTRPLEQKLISEEDLAANDILDYKDDDDKV

Chromatograms: [https://cdn.origene.com/chromatograms/mk8120\\_a03.zip](https://cdn.origene.com/chromatograms/mk8120_a03.zip)

Restriction Sites: Sgfl-Mlul

**Cloning Scheme:**

Cloning sites used for ORF Shuttling:



\* The last codon before the Stop codon of the ORF

**ACCN:** NM\_014817

**ORF Size:** 2433 bp

**OTI Disclaimer:** The molecular sequence of this clone aligns with the gene accession number as a point of reference only. However, individual transcript sequences of the same gene can differ through naturally occurring variations (e.g. polymorphisms), each with its own valid existence. This clone is substantially in agreement with the reference, but a complete review of all prevailing variants is recommended prior to use. [More info](#)
**OTI Annotation:** This clone was engineered to express the complete ORF with an expression tag. Expression varies depending on the nature of the gene.

**Components:** The ORF clone is ion-exchange column purified and shipped in a 2D barcoded Matrix tube containing 10ug of transfection-ready, dried plasmid DNA (reconstitute with 100 ul of water).

**Reconstitution Method:**

1. Centrifuge at 5,000xg for 5min.
2. Carefully open the tube and add 100ul of sterile water to dissolve the DNA.
3. Close the tube and incubate for 10 minutes at room temperature.
4. Briefly vortex the tube and then do a quick spin (less than 5000xg) to concentrate the liquid at the bottom.
5. Store the suspended plasmid at -20°C. The DNA is stable for at least one year from date of shipping when stored at -20°C.

**RefSeq:** [NM\\_014817.4](#)

**RefSeq Size:** 5056 bp

**RefSeq ORF:** 2436 bp

**Locus ID:** 9865

**UniProt ID:** [Q7L0X0](#)

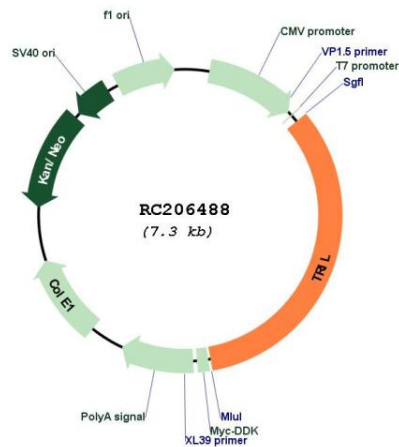
**Cytogenetics:** 7p14.3

**Domains:** LRRCT, LRR, LRR\_TYP, LRR\_PS

**MW:** 89.2 kDa

**Gene Summary:** TRIL is a component of the TLR4 (MIM 603030) complex and is induced in a number of cell types by lipopolysaccharide (LPS) (Carpenter et al., 2009 [PubMed 19710467]).[supplied by OMIM, Apr 2010]

## Product images:



Circular map for RC206488