

Product datasheet for **RC206479**

TRIM (TRAT1) (NM_016388) Human Tagged ORF Clone

Product data:

Product Type: Expression Plasmids
Product Name: TRIM (TRAT1) (NM_016388) Human Tagged ORF Clone
Tag: Myc-DDK
Symbol: TRIM
Synonyms: HSPC062; pp29/30; TCRIM; TRIM
Mammalian Cell Selection: Neomycin
Vector: pCMV6-Entry (PS100001)
E. coli Selection: Kanamycin (25 ug/mL)
ORF Nucleotide Sequence: >RC206479 ORF sequence
 Red=Cloning site Blue=ORF Green=Tags(s)

TTTTGTAATACGACTCACTATAGGGCGCCGGGAATTCGTCGACTGGATCCGGTACCGAGGAGATCTGCC
 GCC**CGATCGCC**

ATGTCAGGAATCTCTGGGTGCCCTTTTCTCTGGGACTTCTAGCATTGTTGGGCTTGGCTTTGGTTA
 TACTACTGATCTCAATATTTCCACTATGTGGAAAAGCAACGACAAGATAAAATGTACAGCTACTCCAG
 TGACCACACCAGGGTTGATGAGTATTATATTGAAGACACACCAATTTATGGTAACTTAGATGATGATT
 TCAGAACCAATGGATGAAAATTGCTATGAACAAATGAAAGCCCGACCAGAGAAATCTGTAATAAGATGC
 AGGAAGCCACCCATCTGCACAGGCAACCAATGAAACACAGATGTCTACGCCTCACTTGATCACAGCGT
 TAAGGGGAAGCGTAGAAAGCCCAGGAAACAGAATACTCATTTCTCAGACAAGGATGGAGATGAGCAACTA
 CATGCAATAGATGCCAGCGTTTCTAAGACCACCTTAGTAGACAGTTTCTCCCAGAAAGCCAGGCAGTAG
 AGGAAAACATTCATGATGATCCCATCAGACTGTTTGGATTGATCCGTGCTAAGAGAGAACCTATAAAC

ACGCGTACGCGGCCGCTCGAGCAGAAACTCATCTCAGAAGAGGATCTGGCAGCAAATGATATCCTGGATT
 ACAAGGATGACGACGATAAGGTTTAA

Protein Sequence: >RC206479 protein sequence
 Red=Cloning site Green=Tags(s)

MSGISGCPFFLWGLLALLGLALVISLIFNISHYVEKQRQDKMYSYSSDHTRVDEYYIEDTPIYGNLDDMI
 SEPMDENCYEQMKARPEKSVNMQEATPSAQATNETQMCYASLDHSVKGKRRKPRKQNTHFSDKGDGEQL
 HAIDASVSKTTLVDSFSPESQAVEENIHDDPIRLFGLIRAKREPIN

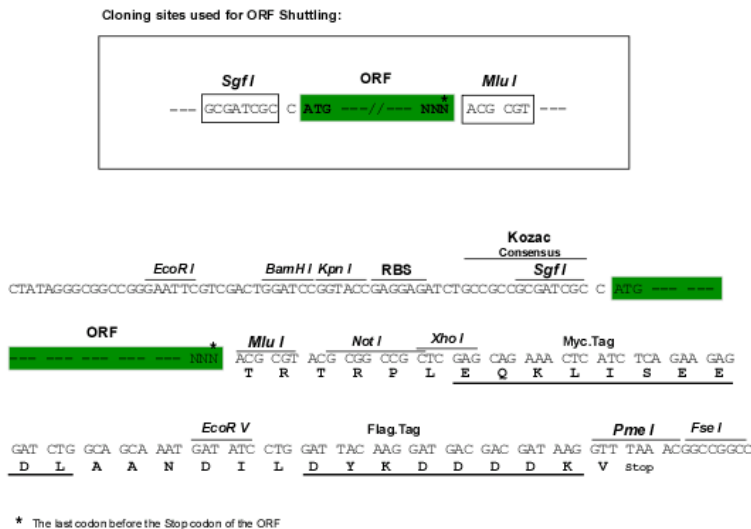
TRTRPLEQKLISEEDLAANDILDYKDDDDKV

Chromatograms: https://cdn.origene.com/chromatograms/mk6328_g01.zip



Restriction Sites: SgfI-MluI

Cloning Scheme:



ACCN: NM_016388

ORF Size: 558 bp

OTI Disclaimer: The molecular sequence of this clone aligns with the gene accession number as a point of reference only. However, individual transcript sequences of the same gene can differ through naturally occurring variations (e.g. polymorphisms), each with its own valid existence. This clone is substantially in agreement with the reference, but a complete review of all prevailing variants is recommended prior to use. [More info](#)

OTI Annotation: This clone was engineered to express the complete ORF with an expression tag. Expression varies depending on the nature of the gene.

Components: The ORF clone is ion-exchange column purified and shipped in a 2D barcoded Matrix tube containing 10ug of transfection-ready, dried plasmid DNA (reconstitute with 100 ul of water).

Reconstitution Method:

1. Centrifuge at 5,000xg for 5min.
2. Carefully open the tube and add 100ul of sterile water to dissolve the DNA.
3. Close the tube and incubate for 10 minutes at room temperature.
4. Briefly vortex the tube and then do a quick spin (less than 5000xg) to concentrate the liquid at the bottom.
5. Store the suspended plasmid at -20°C. The DNA is stable for at least one year from date of shipping when stored at -20°C.

RefSeq: [NM_016388.4](#)

RefSeq Size: 1695 bp

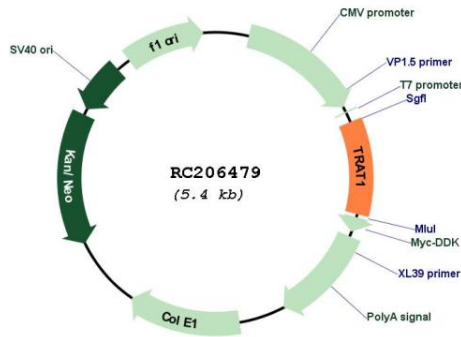
RefSeq ORF: 561 bp

Locus ID: 50852

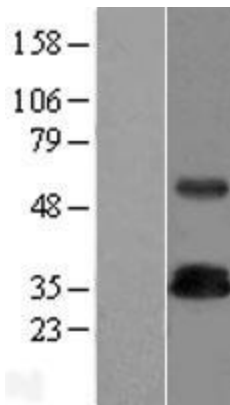
UniProt ID: [Q6PIZ9](#)

Cytogenetics: 3q13.13
Protein Families: Druggable Genome, Transmembrane
MW: 21.2 kDa
Gene Summary: Stabilizes the TCR (T-cell antigen receptor)/CD3 complex at the surface of T-cells. [UniProtKB/Swiss-Prot Function]

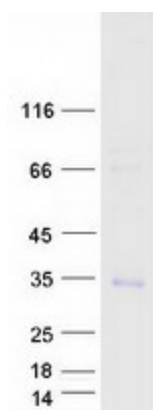
Product images:



Circular map for RC206479



Western blot validation of overexpression lysate (Cat# [LY413992]) using anti-DDK antibody (Cat# [TA50011-100]). Left: Cell lysates from untransfected HEK293T cells; Right: Cell lysates from HEK293T cells transfected with RC206479 using transfection reagent MegaTran 2.0 (Cat# [TT210002]).



Coomassie blue staining of purified TRAT1 protein (Cat# [TP306479]). The protein was produced from HEK293T cells transfected with TRAT1 cDNA clone (Cat# RC206479) using MegaTran 2.0 (Cat# [TT210002]).