

Product datasheet for **RC206478**

ABCG1 (NM_016818) Human Tagged ORF Clone

Product data:

Product Type:	Expression Plasmids
Product Name:	ABCG1 (NM_016818) Human Tagged ORF Clone
Tag:	Myc-DDK
Symbol:	ABCG1
Synonyms:	ABC8; WHITE1
Mammalian Cell Selection:	Neomycin
Vector:	pCMV6-Entry (PS100001)
E. coli Selection:	Kanamycin (25 ug/mL)



[View online »](#)

ORF Nucleotide Sequence:

>RC206478 representing NM_016818
 Red=Cloning site Blue=ORF Green=Tags(s)

TTTTGTAATACGACTCACTATAGGGCGGCCGGAATTCGTCGACTGGATCCGGTACCGAGGAGATCTGCC
 GCC**CGGATCGCC**

ATGGCCTGTCTGATGGCCGCTTTCTCGGTCGGCACCGCCATGAATGCCAGCAGTTACTCTGCAGAGATGA
 CGGAGCCCAAGTCGGTGTGTCTCGGTGGATGAGGTGGTGTCCAGCAACATGGAGGCCACTGAGACGGA
 CCTGCTGAATGGACATCTGAAAAAGTAGATAATAACCTCACGGAAGCCAGCGCTTCTCCTCCTTGCC
 CGGAGGGCAGCTGTGAACATTGAATTCAGGGACCTTTCCTATTCGGTTCCTGAAGGACCCTGGTGGAGGA
 AGAAAGGATACAAGACCCTCCTGAAAGGAATTTCCGGGAAGTTCATAGTGGTGAAGTGGTGGCCATTAT
 GGGTCTTCCGGGGCCGGGAAGTCCACGCTGATGAACATCCTGGCTGGATACAGGGAGACGGGCATGAAG
 GGGGCCGCTCTCATCAACGGCCTGCCCGGGACCTGCGCTGCTCCGGAAGGTGCTCTGCTACATCATGC
 AGGATGACATGCTGCTGCCGCATCTCACTGTGCAGGAGGCCATGATGGTGTGGCACATCTGAAGCTTCA
 GGAGAAGGATGAAGGCAGAAGGGAAATGGTCAAGGAGATACTGACAGCGCTGGGCTTGTGTCTTGGCC
 AACACGGGACCGGGAGCCTGTCAGGTGGTCAGCGCAAGCGCCTGGCCATCGCGCTGGAGCTGGTGAACA
 ACCCTCCAGTCATGTTCTTCGATGAGCCACCAGCGGCCTGGACAGCGCCTCCTGCTTCCAGGTGGTCTC
 GCTGATGAAAGGGCTCGCTCAAGGGGGTTCGCTCCATCATTTGCACCATCCACCAGCCAGCGCCAAACTC
 TTCGAGCTGTTCCAGCAGCTTACGCTCCTGAGTCAAGGACAATGTGTGTACCGGGGAAAAGTCTGCAATC
 TTGTGCCATATTTGAGGGATTTGGGTCTGAACTGCCAACCTACCACAACCCAGCAGATTTTGTGATGGA
 GGTTGCATCCGGCGAGTACGGTATCAGAACAGTCGGCTGGTGGAGCGGTTCCGGAGGGCATGTGTGAC
 TCAGACCACAAGAGAGACCTCGGGGGTATGCCGAGGTGAACCTTTTCTTTGGCACCGGCCCTCTGAAG
 AGGACTCCTCGTCCATGGAAGGCTGCCACAGCTTCTCTGCCAGCTGCCTCACGCAGTTCTGCATCCTCTT
 CAAGAGGACCTTCTCAGCATCATGAGGGACTCGGTCTGACACACCTGCGCATCACCTCGCACATTGGG
 ATCGGCCCTCCTCATTGGCCTGCTGACTTGGGGATCGGGAACGAAGCCAAGAAGGTCTTGAGCAACTCCG
 GCTTCTCTTCTCTCCATGCTGTTCTCATGTTCCGCGCCCTCATGCCTACTGTTCTGACATTTCCCT
 GGAGATGGGAGTCTTCTTCGGGAACACCTGAACTACTGGTACAGCCTGAAGGCCTACTACCTGGCCAAG
 ACCATGGCAGACGTGCCCTTTCAGATCATGTTCCAGTGGCCTACTGCAGCATCGTGTACTGGATGACGT
 CGCAGCCGTCGACGCCGTGCGCTTTGTGCTGTTGCCGCGCTGGGCACCATGACCTCCCTGGTGGCACA
 GTCCTGGGCCTGCTGATCGGAGCCGCTCCACGTCCTGCAGGTGGCCACTTTCGTGGGCCAGTGACA
 GCCATCCCGGTGCTCCTGTTCTCGGGTCTTTCGTGAGCTTCGACACCATCCCCACGTACCTACAGTGGA
 TGTCTACATCTCCTATGTCAGGTATGGGTTCGAAGGGTTCATCCTCTCCATCTATGGCTTAGACCGGGA
 AGATCTGCACTGTGACATCGACGAGACGTGCCACTTCCAGAAGTCGGAGGCCATCCTGCGGGAGCTGGAC
 GTGGAAAATGCCAAGCTGTACCTGGACTTCATCGTACTCGGGATTTTCTTCATCTCCCTCCGCTCATTG
 CCTATTTGTCTCAGGTACAAAATCCGGGCAGAGAGG

ACGCGTACGCGGCCGCTCGAGCAGAACTCATCTCAGAAGAGGATCTGGCAGCAATGATATCCTGGATT
 ACAAGGATGACGACGATAAGGTTTAA

Protein Sequence: >RC206478 representing NM_016818
 Red=Cloning site Green=Tags(s)

MACLMAAFSVGTAMNASSYSAEMTEPKSVCVSVDEVVSSNMEATETDLLNGHLKKVDNNL TEAQRFS
 RRAAVNIEFRDLSYVPEGPWWRKKGYKTLLKGISGKFNSGELVAIMGPSGAGKSTLMNLAGYRETGMK
 GAVLINGLPRDLRCFRKVSICYIMQDDMLLPHLTVQEAMVSAHLKLEKDEGRREMVKEILTALGLLS
 NTRTGSLSGGQRKRLAIALELVNPPVMFFDEPTSGLDSASCFQVVSMLKGLAQGGRSIICTIHQPSAKL
 FELFDQLYVLSQGQCVRGKVCNLVPYLRDLGLNCPTYHNPADFVMEVASGEYGDQNSRLVRVREGMCD
 SDHKRDLGGDAEVPFLWHRPSEEDSSSMEGCHSFASCLTQFCILFKRTFLSIMRDSVLTHLRITSHIG
 IGLLIGLLYLIGINEAKKVLNSGFLFFSMLFLMFAALMPTVLTFFLEMGVFLREHLNYWYSLKAYYLAK
 TMADVPFQIMFPVAYCSIVYWMTSQPSDAVRFVLFALGTMTSLVAQSLGLLIGAASLQVATFVGPVT
 AIPVLLFSGFFVSDFTIPTYLQWMSYISYVRYGFEGVILSIYGLDREDLHCDIDETCHFQKSEAILRELD
 VENAKLYLDFIVLGIFFISLRLIAYFVLRYSKIRAER

TRTRPLEQKLISEEDLAANDILDYKDDDDKV

Restriction Sites:

SgfI-MluI

Cloning Scheme:



ACCN: NM_016818

ORF Size: 1998 bp

OTI Disclaimer: Due to the inherent nature of this plasmid, standard methods to replicate additional amounts of DNA in E. coli are highly likely to result in mutations and/or rearrangements. Therefore, OriGene does not guarantee the capability to replicate this plasmid DNA. Additional amounts of DNA can be purchased from OriGene with batch-specific, full-sequence verification at a reduced cost. Please contact our customer care team at custsupport@origene.com or by calling 301.340.3188 option 3 for pricing and delivery.

The molecular sequence of this clone aligns with the gene accession number as a point of reference only. However, individual transcript sequences of the same gene can differ through naturally occurring variations (e.g. polymorphisms), each with its own valid existence. This clone is substantially in agreement with the reference, but a complete review of all prevailing variants is recommended prior to use. [More info](#)

OTI Annotation: This clone was engineered to express the complete ORF with an expression tag. Expression varies depending on the nature of the gene.

Components: The ORF clone is ion-exchange column purified and shipped in a 2D barcoded Matrix tube containing 10ug of transfection-ready, dried plasmid DNA (reconstitute with 100 ul of water).

Reconstitution Method:

1. Centrifuge at 5,000xg for 5min.
2. Carefully open the tube and add 100ul of sterile water to dissolve the DNA.
3. Close the tube and incubate for 10 minutes at room temperature.
4. Briefly vortex the tube and then do a quick spin (less than 5000xg) to concentrate the liquid at the bottom.
5. Store the suspended plasmid at -20°C. The DNA is stable for at least one year from date of shipping when stored at -20°C.

RefSeq: [NM_016818.3](#)

RefSeq Size: 2982 bp

RefSeq ORF: 2001 bp

Locus ID: 9619

UniProt ID: [P45844](#)

Cytogenetics: 21q22.3

Domains: ABC_tran, AAA

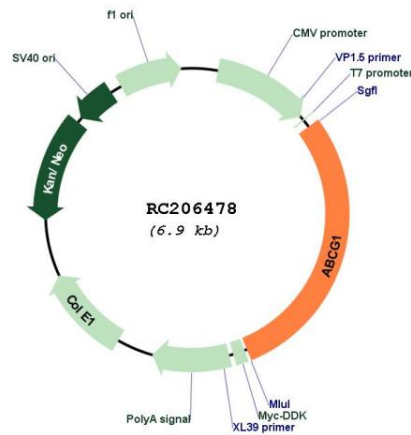
Protein Families: Druggable Genome, Transmembrane

Protein Pathways: ABC transporters

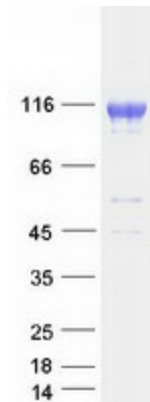
MW: 74 kDa

Gene Summary:

The protein encoded by this gene is a member of the superfamily of ATP-binding cassette (ABC) transporters. ABC proteins transport various molecules across extra- and intra-cellular membranes. ABC genes are divided into seven distinct subfamilies (ABC1, MDR/TAP, MRP, ALD, OABP, GCN20, White). This protein is a member of the White subfamily. It is involved in macrophage cholesterol and phospholipids transport, and may regulate cellular lipid homeostasis in other cell types. Six alternative splice variants have been identified. [provided by RefSeq, Jul 2008]

Product images:


Circular map for RC206478



Coomassie blue staining of purified ABCG1 protein (Cat# [TP306478]). The protein was produced from HEK293T cells transfected with ABCG1 cDNA clone (Cat# RC206478) using MegaTran 2.0 (Cat# [TT210002]).