

Product datasheet for **RC206476**

TBCCD1 (NM_018138) Human Tagged ORF Clone

Product data:

Product Type:	Expression Plasmids
Product Name:	TBCCD1 (NM_018138) Human Tagged ORF Clone
Tag:	Myc-DDK
Symbol:	TBCCD1
Mammalian Cell Selection:	Neomycin
Vector:	pCMV6-Entry (PS100001)
E. coli Selection:	Kanamycin (25 ug/mL)



[View online »](#)

ORF Nucleotide Sequence:

>RC206476 ORF sequence
 Red=Cloning site Blue=ORF Green=Tags(s)

TTTTGTAATACGACTCACTATAGGGCGGCCGGAATTCGTCGACTGGATCCGGTACCGAGGAGATCTGCC
 GCC**GCGATCGCC**

ATGGATCAGTCCAGAGTTCTCCTCTGGGTGAAAGCAGAACCCTTTATAGTGGGTGCCTTGCAGGTCCCC
 CTCCATCCAAGTTTGTCTTCACTATCTCAGGAAGATATCCACCTATGTGCAAATCCGGGCCACAGAAGG
 AGCTTACCCGCGCCTCTACTGGTCTACATGGAGGCACATCGCTTGTGGGAAGCTGCAAGTTGGCAAGGAC
 CTGGCGTGGCTTTACTTCGAAATATTTGATAGTCTTTCAATGAAGACACCTGAGGAGCGCCTGGAATGGT
 CTGAGGTTCTGTCCAAGTGCATGTCTGAGGAGGAAGTTGAAAAGCAGAGAAATCAGCTTTCAGTGGACAC
 GCTACAGTTTCTGCTCTTCTTACATTCAACAGTTGAACAAGGTCTCCCTAAGGACATCTTTGATTGGC
 GAAGAGTGGCCAGTCCCAGAAACAAATCTCAGTCTCCTGACCTGACTGAAAAATCTAATGTGCATAATA
 AGAACTGGAATGATTACAGTACCAAGCTTTTGTCTATGATCATCTGTCTGATCTCCTCGAGCTGCTTTT
 AGATCCAAAACAACCTCACTGCATCATTTTCAATCAACCCATAGTAGTCTAGTGTCTCGAGAAGCTGTTGTG
 GCCTCAGCTTCCTTATTGAAGGTACAATAAGTAGAGCCAGGAAGATCTATCCACTTCATGAACTTGCAC
 TGTGGCAACCACTGCATGCAGATAGTGGCTTCTCAAAGATCTCTAAGACTTTCTCTTTCTACAACTGGA
 AACCTGGTTGAGGTCTGTTTACTGGGAATCCATTTGGTACATCAGCTTGCCTCAAGTCTGAAAAGAAA
 TTGGCTTGGGCTCATCAAGTTGAAGGGACCACAAAAGAGCTAAGATTGCTTGAATACTCATGTGGCC
 CTAGGATGCACCGACTGGTAGTGATGAGCCAGGTTTACAAGCAGACACTGGCTAAGAGCTCAGACACTCT
 GGCGGGGACATGTAAGATTGATCGTTGCAACGAATCTTTTATATCTGCTCTCTCCCTTACGATCT
 GTGACAATTGAGAAGTGCAGGAATAGCATCTTTGTCTTGGGCCCTGTAGGACTACACTTCACTCCACA
 GTTGTGACAATGTTAAAGTCATTGCTGTTGCCATCGTTTGTCCATCTCTTCTACAACAGGTTGCATCTT
 TCAGTCTTACGCCTACACGCCCACTTATTCTCTCTGGGAACCAGACAGTAACCTTTGCCCTTTTCAT
 ACACATTACCAATGCTAGAGGACCATATGGCCAGGACTGGCCTTGTCTACAGTGCCTAATATTGGGATA
 ATCCAATGGTTGTGTGCAGAGAGAACAGCGACACAAGAGTCTTCCAGCTTTTACCACCTTGTGAATTCTA
 TGTATTTATTATCCCTTTGAAATGGAAGGGGACACAACAGAGATACCCGGGGTCTTCCATCTGTATAT
 CAGAAAGCACTGGGTCAAAGAGAACAGAAGATACAGATCTGGCAGAAAAGTGAAGGAGGCTCATTGGA
 CAAAGGATCAAAGGAAGCAGTTCAGGTACTGGTAGAGAAACAAGTTTTATGAATGGTTGATTAATACAGG
 ACATCGCCAACAGCTGGACAGCCTGTACCCCTGCAGCAGGCTCAAACAAGCAGCTGGA

ACGCGTACGCGGCCGCTCGAGCAGAAACTCATCTCAGAAGAGGATCTGGCAGCAAATGATATCCTGGATT
 ACAAGGATGACGACGATAAGGTTTAA

Protein Sequence:

>RC206476 protein sequence
 Red=Cloning site Green=Tags(s)

MDQSRVLLVWKAEPFIVGALQVPPPSKFSLSLHYLRKISTYVQIRATEGAYPRLYWSTWRHIACGKLQAKD
 LAWL YFEIFDSL SMKTP EERLEWSEVL SNMSEEEVEKQRNQL SVDTLQFLLFLYIQQLNKVSLRSLIG
 EEWPSPRNKSQSPDL TEKSNCHNKNWNDYSHQAFVYDHLSDLLELLLDPKQLTASFHSTHSSLVREAVV
 ALSFLIEGTISRARKIYPLHELALWQPLHADSGFSKISKTF SFYKLETWLRSL TGNPFGTSACLKSGKK
 LAWAHQVEGTTKRAKIACNTHVAPRMHRLVVMQVYKQTLAKSSDTLAGAHVKIHRNESFIYLLSPLRS
 VTIEKCRNSIFVLGPVGTTLHLHSCDNVAVIAVCHRLSISSTTGCIFHVLTPTRPLILSGNQTVTFAPFH
 THYPML EDHMARTGLATVPNYWDNPMVCRENSDTRVFQLLPPCEFVVF IIPFEMEGDTTEIPGGLPSVY
 QKALGQREQKIQIWQKT VKEAHLTKDQRKQFQVLVENKFYEWLINTGHRQQLDL VPPAAGSKQAAG

TRTRPLEQKLISEEDLAANDILDYKDDDDKV

Chromatograms:

https://cdn.origene.com/chromatograms/mk6327_a05.zip

Restriction Sites:

Sgfl-Mlul

Cloning Scheme:


ACCN: NM_018138

ORF Size: 1671 bp

OTI Disclaimer: The molecular sequence of this clone aligns with the gene accession number as a point of reference only. However, individual transcript sequences of the same gene can differ through naturally occurring variations (e.g. polymorphisms), each with its own valid existence. This clone is substantially in agreement with the reference, but a complete review of all prevailing variants is recommended prior to use. [More info](#)

OTI Annotation: This clone was engineered to express the complete ORF with an expression tag. Expression varies depending on the nature of the gene.

Components: The ORF clone is ion-exchange column purified and shipped in a 2D barcoded Matrix tube containing 10ug of transfection-ready, dried plasmid DNA (reconstitute with 100 ul of water).

- Reconstitution Method:**
1. Centrifuge at 5,000xg for 5min.
 2. Carefully open the tube and add 100ul of sterile water to dissolve the DNA.
 3. Close the tube and incubate for 10 minutes at room temperature.
 4. Briefly vortex the tube and then do a quick spin (less than 5000xg) to concentrate the liquid at the bottom.
 5. Store the suspended plasmid at -20°C. The DNA is stable for at least one year from date of shipping when stored at -20°C.

RefSeq: [NM_018138.5](#)

RefSeq Size: 2731 bp

RefSeq ORF: 1674 bp

Locus ID: 55171

UniProt ID: [Q9NVR7](#)

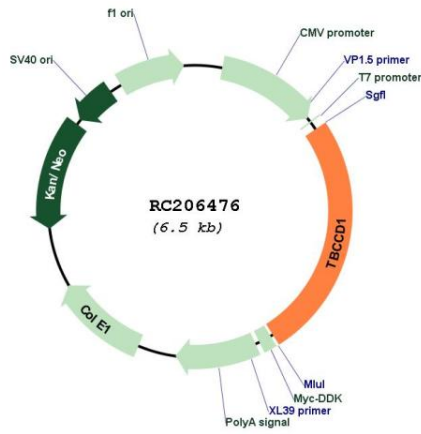
Cytogenetics: 3q27.3

Domains: CARP

MW: 63.5 kDa

Gene Summary: Plays a role in the regulation of centrosome and Golgi apparatus positioning, with consequences on cell shape and cell migration.[UniProtKB/Swiss-Prot Function]

Product images:



Circular map for RC206476