

## Product datasheet for **RC206472**

### **CYP2W1 (NM\_017781) Human Tagged ORF Clone**

#### **Product data:**

Product Type:	Expression Plasmids
Product Name:	CYP2W1 (NM_017781) Human Tagged ORF Clone
Tag:	Myc-DDK
Symbol:	CYP2W1
Mammalian Cell Selection:	Neomycin
Vector:	pCMV6-Entry (PS100001)
E. coli Selection:	Kanamycin (25 ug/mL)



[View online »](#)

**ORF Nucleotide Sequence:**

>RC206472 ORF sequence  
 Red=Cloning site Blue=ORF Green=Tags(s)

TTTTGTAATACGACTCACTATAGGGCGGCCGGGAATTCGTCGACTGGATCCGGTACCGAGGAGATCTGCC  
 GCC**CGCATCGCC**

ATGGCCCTGCTGCTCTTGTCTGTTCTGGGCTCTGGGGCTCTGGGGCTGCTCTGCGCCTGCGCCCAAG  
 ACCCTCCAGCTGCCGGTGGCCCCGGGGCTCGCCCGCTGCCGCTCGTCCGGAACCTGCATTGCT  
 CGCTCTGTCGCAACAGGACCGGTCCCTGATGGAGCTCTCAGAACGCTACGGGCGGTGTTACCGTGCAC  
 CTGGGGCGCCAGAAGACGGTGGTGTGACGGGGTTCGAGGCGGTCAAAGAGGCGCTGGCGGGCCCCGGC  
 AGGAGCTGGCCGACCGGCTCCCATCGCCATCTCCAGCTCATCCAGCGAGGTGGAGGCATCTTCTTCTC  
 ATCTGGGGCGCGTGGAGGGTGCCTGCCAGTTACGGTGCCTGCACAGCCTGGCGTGGCCGG  
 GAGCCGGTGGCTGACAAGATTCTGCAGGAGCTGAAATGCCTCTCTGGCAGCTGGATGGCTACAGAGCC  
 GGCCCTCCCGCTGGCCCTACTGGGCTGGGCTCCCTCAAATACACCTTCGCGCTCTCTCGGCCGCC  
 ATTTGACTACCGGACCCCGTGTGTGTCCCTGCTGGGTCTCATCGATGAGGTATGGTCTCTTGGGG  
 TCCCTGGCCTGCAGCTGTCAACGTCTACCCATGGCTCGGGGCCCTGCTCCAGCTGCACCGGCCGTCC  
 TGCGAAGATCGAGGAGGTCCGTGCCATTTCTGAGGACCCTCTGGAGGCGCGGAGCCCCACGTGTGCC  
 GGGGACCCCGTGTGCAGCTATGTGGAGCCCTGATCCAGCAGGGACAGGGGATGACCCCGAGGGCCTG  
 TTTGCTGAGGCCAACCGGTGGCCTGCACCCTGGACATGGTCAATGGCCGGGACGGAGACGACCTCGGCCA  
 CGCTGCAGTGGGCGCACTTCTGATGGGCCGACCCGGACGTGCAGGGCCGGTGCAGGAGGAGCTAGA  
 CCGCGTCTGGGCCCTGGCGGACTCCCGGCTGGAGGACCAGCAGGCTCTGCCCTACACAAGCGCCGTG  
 CTCCACGAGGTGCAGCGGTTTCATACGCTCTGCCGACGTGCCCGCTGCACCGCGCCGACACACAGC  
 TGGCGGCTTCTGCTCCCAAGGGCACGCCGTGATTCCTGCTGACCTCGGTGCTCTGGATGAGAG  
 ACAGTGGCAGACCCAGGCCAGTTCAACCCGGCCATTTCTGGACGCGAATGGGCACTTGTGAAGCGG  
 GAGGCCTTCTGCCTTTCTGTCAGGCCCGCGTCTGTGTTGGGAGCGCTGGCCAGGACCGAGCTCT  
 TCTGCTGTTGCCGGCCTCTGCAGAGGTACCGCCTGCTGCCCCCGCTGGCGTCAGTCCGGCCTCCCT  
 GGACACCACGCCCGCCGGGCTTTTACCATGAGGCCGAGGGCCAGGCCCTGTGTGCGGTGCCAGGCC

**ACCGTACGCGGCCGCTCGAGCAGAACTCATCTCAGAAGAGGATCTGGCAGCAATGATATCTGGATT**  
**ACAAGGATGACGACGATAAGGTTTAA**

**Protein Sequence:**

>RC206472 protein sequence  
 Red=Cloning site Green=Tags(s)

MALLLLFLGLLGLWLLCACAQDPSAARWPPGPRPLPLVGNLHLLRLSQDRSLMELSERYPVFTVH  
 LGRQKTVVLTGF EAVKEALAGPGQELADRPPIAIFQLIQRGGIFFSSGARWRAARQFTVRALHSLGVGR  
 EPVADKILQELKCLSGQLDGYRGRPFPLALLGWAPSNITFALLFGRRFDYRDPVFSLLGLIDEVMVLLG  
 SPGLQLFNVYPWL GALLQLHRPVLRKIEEVRAILRTLLEARRPHVCPGDPVCSYVDALIQGGQDDPEGL  
 FAEANAVACTLDMVMAGTETTSATLQWAALLMGRHPDVQGRVQEELDRVLGPGRTPRLEDQALPYTSAV  
 LHEVQRFITLLPHVPRCTAADTQLGGFLLPKGTPVIPLLT SVLLDETQWQTPGQFNPGHFLDANGHFVKR  
 EAFLPFSAGRRCVGERLARTELFLLFAGLLQRYRLLPPPVGSPASLDTTPARAFTMRPRAQALCAVPRP

**TRTRPLEQKLISEEDLAANDILDYKDDDDKV**

**Chromatograms:**

[https://cdn.origene.com/chromatograms/mk6521\\_g07.zip](https://cdn.origene.com/chromatograms/mk6521_g07.zip)

**Restriction Sites:**

SgfI-MluI

**Cloning Scheme:**


**ACCN:** NM\_017781

**ORF Size:** 1470 bp

**OTI Disclaimer:** The molecular sequence of this clone aligns with the gene accession number as a point of reference only. However, individual transcript sequences of the same gene can differ through naturally occurring variations (e.g. polymorphisms), each with its own valid existence. This clone is substantially in agreement with the reference, but a complete review of all prevailing variants is recommended prior to use. [More info](#)

**OTI Annotation:** This clone was engineered to express the complete ORF with an expression tag. Expression varies depending on the nature of the gene.

**Components:** The ORF clone is ion-exchange column purified and shipped in a 2D barcoded Matrix tube containing 10ug of transfection-ready, dried plasmid DNA (reconstitute with 100 ul of water).

- Reconstitution Method:**
1. Centrifuge at 5,000xg for 5min.
  2. Carefully open the tube and add 100ul of sterile water to dissolve the DNA.
  3. Close the tube and incubate for 10 minutes at room temperature.
  4. Briefly vortex the tube and then do a quick spin (less than 5000xg) to concentrate the liquid at the bottom.
  5. Store the suspended plasmid at -20°C. The DNA is stable for at least one year from date of shipping when stored at -20°C.

**RefSeq:** [NM\\_017781.3](#)

**RefSeq Size:** 2354 bp

**RefSeq ORF:** 1473 bp

**Locus ID:** 54905

**UniProt ID:** [Q8TAV3](#)

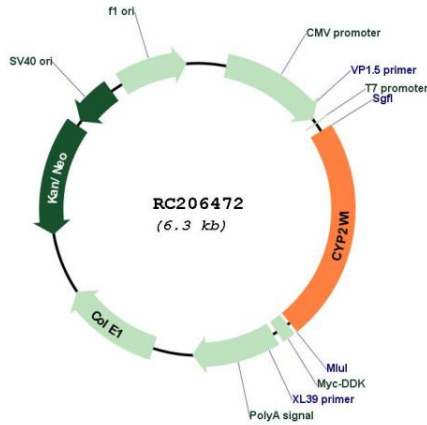
**Cytogenetics:** 7p22.3

**Protein Families:** Druggable Genome, P450

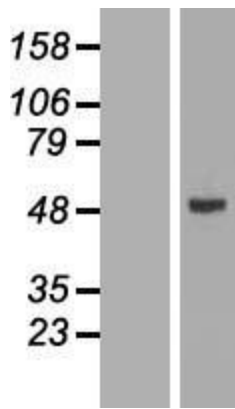
**MW:** 53.8 kDa

**Gene Summary:** This gene encodes a member of the cytochrome P450 superfamily of enzymes. The cytochrome P450 proteins are monooxygenases which catalyze many reactions involved in drug metabolism and synthesis of cholesterol, steroids and other lipids. [provided by RefSeq, Jul 2008]

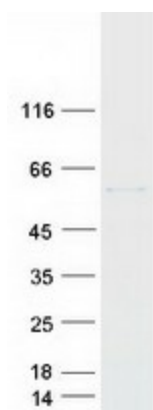
**Product images:**



Circular map for RC206472



Western blot validation of overexpression lysate (Cat# [LY413554]) using anti-DDK antibody (Cat# [TA50011-100]). Left: Cell lysates from untransfected HEK293T cells; Right: Cell lysates from HEK293T cells transfected with RC206472 using transfection reagent MegaTran 2.0 (Cat# [TT210002]).



Coomassie blue staining of purified CYP2W1 protein (Cat# [TP306472]). The protein was produced from HEK293T cells transfected with CYP2W1 cDNA clone (Cat# RC206472) using MegaTran 2.0 (Cat# [TT210002]).