

Product datasheet for **RC206471**

RGS3 (NM_134427) Human Tagged ORF Clone

Product data:

Product Type:	Expression Plasmids
Product Name:	RGS3 (NM_134427) Human Tagged ORF Clone
Tag:	Myc-DDK
Symbol:	RGS3
Synonyms:	C2PA; RGP3
Mammalian Cell Selection:	Neomycin
Vector:	pCMV6-Entry (PS100001)
E. coli Selection:	Kanamycin (25 ug/mL)



[View online »](#)

ORF Nucleotide Sequence:

>RC206471 ORF sequence
 Red=Cloning site Blue=ORF Green=Tags(s)

TTTTGTAATACGACTCACTATAGGGCGGCCGGAATTCGTCGACTGGATCCGGTACCGAGGAGATCTGCC
 GCC**CGGATCGCC**

ATGAACCGCTTCAATGGGCTCTGCAAGGTGTGCTCGGAGCGCCGCTACCGCCAGATCACCATCCCGAGGG
 GAAAGGACGGCTTTGGCTTCACCATCTGCTGCGACTCTCCAGTTCGAGTCCAGGCCGTGGATTCCGGGGG
 TCCGGCGGAACGGGCAGGGCTGCAGCAGCTGGACACGGTCTGCAGCTGAATGAGAGGCCTGTGGAGCAC
 TGGAAATGTGTGGAGCTGGCCACGAGATCCGGAGCTGCCCCAGTGAGATCATCTACTCGTGTGGCGCA
 TGGTCCCCAGGTCAAGCCAGGACCAGATGGCGGGGTCTGCGGCGGGCCTCTGCAAGTCGACACATGA
 CCTCCAGTCACCCCAACAAACGGGAGAAGAAGTGCACCCATGGGGTCCAGGCACGGCCTGAGCAGCGC
 CACAGCTGCCACCTGGTATGTGACAGCTCTGATGGGCTGTGCTCGGCGGCTGGGAGCGCTACACCGAGG
 TGGCAAGCGCGGGGCCAGCACACCCTGCCTGCACTGTCCCGTGCCTGCCCCACCGACCCCAACTA
 CATCATCTGGCCCCGTGAATCTGGGAGCCAGCTGCTCCGGCCTGTGTACCAGGAGGATACCATCCCC
 GAAGAATCAGGGAGTCCCAGTAAAGGGAAGTCTACACAGGCCTGGGGAAGAAGTCCCAGGCTGATGAAGA
 CAGTGCAGACCATGAAGGGCCACGGGAAGTACAAAAGTCCCGGTTGTGAGGCCGATGCCACGCACTC
 AAGCTATGGCACCTACGTCAACCCTGGCCCCAAAGTCTGGTGTCCCTGTCTTTGTTACGCTCTAGAT
 CTCTGTAATCCTGCCCGGACCCTCTGTGCTCAGAGGAGCTGTGCTGTATGAAGGGAGGAACAAGGCTG
 CCGAGGTGACACTGTTTGCTATTCGGACTGTGCTCTTACCAAGGAGGACGAGCCTGGCCGCTGCGA
 CGTCTGAGGAACCCCTCTACCTCCAGAGTGTGAAGTGCAGGAAGGTTCTTCAGAAGACCTGAAATTC
 TCGTGTCTCTATCTAGCAGAGAAGGCAGAGTGTATTCACTTTGGAAGCGCACTCGCAGGAGCAGAAGA
 AGAGATGTTTGAGACGGAGGCAGATGAGAAGAGGGAGATGGCCTTGGAGGAAGGGAAGGGCCTGGTGCC
 GAGGATCCCCACCCAGCAAGGAGCCCTCTCTGGCCAGGAGCTTCTCCAGGACAAGACCTTCCACCCA
 GCAAGGACTCCCCTTCTGGGCAGGAACCCGCTCCAGCCAAGAACCCTGTCCAGCAAAGACTCAGCTAC
 CTCTGAAGGATCCCCTCCAGGCCAGATGCTCCGCCAGCAAGGATGTGCCACCATGCCAGGAACCCCT
 CCAGCCCAAGACCTCTCACCTGCCAGGACCTACCTGCTGGTCAAGAACCCTGCCTCACCAGGACCCTC
 TACTACCAAAGACCTCCCTGCCATCCAGGAATCCCCACCCGGGACCTTCCACCCTGTCAAGATCTGCC
 TCCTAGCCAGGTCTCCCTGCCAGCCAAGGCCCTTACTGAGGACACCATGAGCTCCGGGGACCTACTAGCA
 GCTACTGGGGACCACCTGCGGCCCCAGGCCAGCCTTCTGTGATCCCTGAGGTCCGGCTGGATAGCACCT
 ACAGCCAGAAGGCAGGGGCAGAGCAGGGCTGCTCGGGAGATGAGGAGGATGCAGAAGAGGCCGAGGAGGT
 GGAGGAGGGGGAGGAAGGGGAGGAGGACGAGGATGAGGACACCAGCGATGACAACCTACGGAGAGCGCAGT
 GAGGCCAAGCGCAGCAGCATGATCGAGACGGGCCAGGGGGCTGAGGGTGGCCTCTCACTGCGTGTGAGCA
 ACTCGTGTGCGGCCCGGACGCACAGCGAGGGCAGCCTGCTGCAGGAGCCCCGAGGGCCCTGCTTTGCCCTC
 CGACACCACCTTGCACTGCTCAGACGGTGGGGCGCCGCTCCACCTGGGGCATGCCTTCGCCCAGCACC
 CTCAAGAAAGAGCTGGGCCGCAATGGTGGCTCCATGCACCACCTTCCCTCTTCTCACAGGACACAGGA
 AGATGAGCGGGGCTGACACCGTTGGGGATGATGACGAAGCCTCCCGGAAGAGAAAGAGCAAAAACCTAGC
 CAAGGACATGAAGAACAAGCTGGGGATCTTTCAGACGGCGGAATGAGTCCCCTGGAGCCCCCTCCCGGGC
 AAGGCAGACAAAATGATGAAGTATTCAAGCCACCTCAGAGGAAGCCCTCAAGTGGGGCAGTCTTTGG
 AGAAGCTGCTGGTTCACAAATACGGTTAGCAGTGTTCGAAGCCTTCTTCCGACTGAGTTCAGTGAGGA
 GAATCTGGAGTCTGGTTGGCTTGTGAGGACTTCAAGAAGGTCAAGTCACAGTCCAAGATGGCATCCAAG
 GCCAAGAAGATCTTTGCTGAATACATCGCGATCCAGGCATGCAAGGAGGTCAACCTGGACTCCTACACGC
 GGGAGCACACCAAGGACAACCTGCAGAGCGTACGCGGGGCTGCTTCGACCTGGCACAGAAGCGCATCTT
 CGGGCTCATGAAAAGGACTCGTACCCTCGTTTCTCCGTTCTGACCTCTACCTGGACCTTATTAACCGA
 AAGAAGATGAGTCCCCGCTT

ACGCGTACGCGGCCGCTCGAGCAGAAACTCATCTCAGAAGAGGATCTGGCAGCAAATGATATCCTGGATT
 ACAAGGATGACGACGATAAAGTTTAA

Protein Sequence: >RC206471 protein sequence
 Red=Cloning site Green=Tags(s)

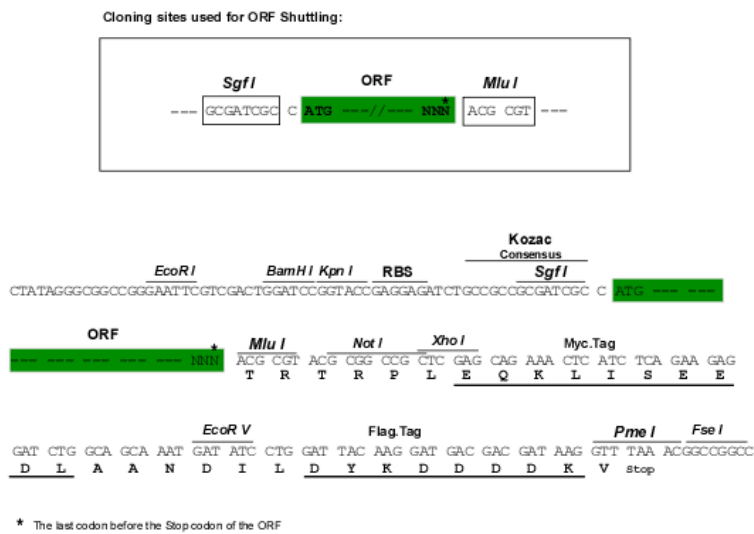
MNRFNGLCKVCSERRYRQITIPRGKDGFGFTICCDSPVRVQAVDSGGPAERAGLQQLDVLQLNERPVEH
 WKCVELAHEIRSCPSEIILLVWRMVPQVKPGPDGGVLRASCKSTHDLQSPNKRKCNCTHGVQARPEQR
 HSCHLVCDSSDGLLLGGWERYTEVAKRGGQHTLPALSRATAPDPNYIILAPLNPGSQLLRPVYQEDTIP
 EESGSPSKGKSYTGLGKKSRMKTVQTMKGHGNYQNCPVVRPHATHSSYGTYYVTLAPKVLVFPVQPLD
 LCNPARTLLLSEELLYEGRNKAEEVTLFAYSDLLLFTKEDEPGRCVDLRNPLYLQSVKLEQGSSEDLKF
 CVLYLAEKAECFLTEAHSQEQQKRVWCWLSENIAKQQQLAASPPDSKMFETEADKREMALEEKGPGA
 EDSPSPKEPSGQELPPGQDLPPSKDPSGQEPAPSQEPLSSKDSATSEGSPPGDAPPSKDVPPCQEP
 PAQDLSPCQDLPAQGEPLPHQDPLLTKDLPAIQESPTRDLPPCQDLPPSQVSLPAKALTEDTMSSGDLA
 ATGDPPAAPRPAFVIPEVRLDSTYSQKAGAEQCGSGDEEDAEEAEEVEEGEEDEDEDTSDNYGERS
 EAKRSSMIETGQGAEGGLSLRVQNSLRRTTHSEGSLLEPRGPCFASDTTLHCSDGEGAASTWGMPSST
 LKKELEGRNGSMHHLSLFFTGHRKMSGADTVGDDDEASRKRKSKNLAKDMKNKLGIFRRRNESPGAPPAG
 KADKMMKSFKPTSEEALKWGESLEKLLVHKYGLAVFQAFRLRTEFSEENLEFWLACEDFKVKVSKMASK
 AKKIFAELYIAIQACKEVNLDSTYREHTKDNLQSVTRGCFDLAQKRIFGLMEKDSYPRFLRSDLYLDLINQ
 KKMSPP

TRTRPLEQKLISEEDLAANDILDYKDDDDKV

Restriction Sites:

SgfI-MluI

Cloning Scheme:

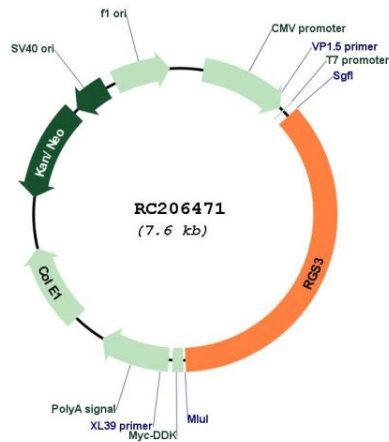


ACCN: NM_134427

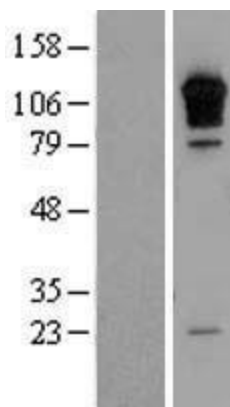
ORF Size: 2754 bp

OTI Disclaimer:	The molecular sequence of this clone aligns with the gene accession number as a point of reference only. However, individual transcript sequences of the same gene can differ through naturally occurring variations (e.g. polymorphisms), each with its own valid existence. This clone is substantially in agreement with the reference, but a complete review of all prevailing variants is recommended prior to use. More info
OTI Annotation:	This clone was engineered to express the complete ORF with an expression tag. Expression varies depending on the nature of the gene.
Components:	The ORF clone is ion-exchange column purified and shipped in a 2D barcoded Matrix tube containing 10ug of transfection-ready, dried plasmid DNA (reconstitute with 100 ul of water).
Reconstitution Method:	<ol style="list-style-type: none">1. Centrifuge at 5,000xg for 5min.2. Carefully open the tube and add 100ul of sterile water to dissolve the DNA.3. Close the tube and incubate for 10 minutes at room temperature.4. Briefly vortex the tube and then do a quick spin (less than 5000xg) to concentrate the liquid at the bottom.5. Store the suspended plasmid at -20°C. The DNA is stable for at least one year from date of shipping when stored at -20°C.
RefSeq Size:	1733 bp
RefSeq ORF:	507 bp
Locus ID:	5998
UniProt ID:	P49796
Cytogenetics:	9q32
Domains:	RGS
Protein Families:	Druggable Genome
Protein Pathways:	Axon guidance
MW:	100.9 kDa
Gene Summary:	This gene encodes a member of the regulator of G-protein signaling (RGS) family. This protein is a GTPase-activating protein that inhibits G-protein-mediated signal transduction. Alternative splicing and the use of alternative promoters results in multiple transcript variants encoding different isoforms. Long isoforms are largely cytosolic and plasma membrane-associated with a function in Wnt signaling and in the epithelial mesenchymal transition, while shorter N-terminally-truncated isoforms can be nuclear. [provided by RefSeq, Jan 2013]

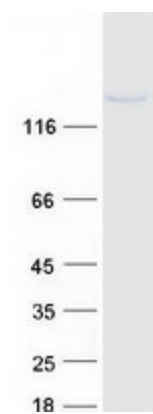
Product images:



Circular map for RC206471



Western blot validation of overexpression lysate (Cat# [LY408751]) using anti-DDK antibody (Cat# [TA50011-100]). Left: Cell lysates from untransfected HEK293T cells; Right: Cell lysates from HEK293T cells transfected with RC206471 using transfection reagent MegaTran 2.0 (Cat# [TT210002]).



Coomassie blue staining of purified RGS3 protein (Cat# [TP306471]). The protein was produced from HEK293T cells transfected with RGS3 cDNA clone (Cat# RC206471) using MegaTran 2.0 (Cat# [TT210002]).