

Product datasheet for **RC206468**

OCN (NM_002538) Human Tagged ORF Clone

Product data:

Product Type:	Expression Plasmids
Product Name:	OCN (NM_002538) Human Tagged ORF Clone
Tag:	Myc-DDK
Symbol:	OCN
Synonyms:	BLCPMG; PPP1R115; PTORCH1
Mammalian Cell Selection:	Neomycin
Vector:	pCMV6-Entry (PS100001)
E. coli Selection:	Kanamycin (25 ug/mL)



[View online »](#)

ORF Nucleotide Sequence:

>RC206468 ORF sequence
 Red=Cloning site Blue=ORF Green=Tags(s)

TTTTGTAATACGACTCACTATAGGGCGGCCGGAATTCGTCGACTGGATCCGGTACCGAGGAGATCTGCC
 GCC**CGGATCGCC**

ATGTCATCCAGGCTCTTAAAGTCCACCTCCTTACAGGCTGATGAATCAAACCGAATCATTATGCAC
 CAAGCAATGACATATATGGTGGAGAGATGCATGTTGACCAATGCTCTCTCAGCCAGCCTACTCTTTT
 CCCAGAAGATGAAATTCTTCACTTCTACAAATGGACCTCTCTCCAGGAGTGATTCGGATCCTGTCTATG
 CTCATTATTGTGATGTGCATTGCCATCTTTGCCTGTGTGGCTCCACGCTTGCCTGGGACAGAGGCTATG
 GAACCTCCCTTTAGGAGGTAGTGTAGGCTACCCTTATGGAGGAAGTGGCTTTGGTAGCTACGGAAGTGG
 CTATGGCTATGGCTATGGTTATGGCTATGGCTACGGAGGCTATACAGACCAAGAGCAGCAAAGGGCTTC
 ATGTTGGCCATGGCTGCCTTTTGTTCATTGCCGCTTGGTGATCTTTGTTACCAGTGTATAAGATCTG
 AAATGTCCAGAACAAGAAGATACTACTTAAGTGTGATAATAGTGAGTGCATCCTGGGCATCATGGTGT
 TATTGCCACAATTGTCTATATAATGGGAGTGAACCAACTGCTCAGTCTTCTGGATCTCTATATGGTTCA
 CAAATATATGCCCTCTGCAACCAATTTTATACCTTGCAGCTACTGGACTCTACGTGGATCAGTATTTCGT
 ATCACTACTGTGTGTGGATCCCGAGGAGCCATTGCCATTGACTGGGGTTCATGATTATTGTGGCTTT
 TGCTTTAATAATTTCTTTGCTGTGAAACTCGAAGAAAGATGGACAGGTATGACAAGTCCAATATTTTG
 TGGGACAAGGAACACATTTATGATGAGCAGCCCCCAATGTGAGGAGTGGGTTAAAAATGTGTCTGCAG
 GCACACAGGACGTGCCTTACCCCCATCTGACTATGTGAAAGAGTTGACAGTCCCATGGCATACTTTC
 CAATGGCAAAGTGAATGACAAGCGGTTTTATCCAGAGTCTTCTATAAATCCACGCCGTTCTCTGAAGTG
 GTTCAGGAGCTTCCATTAACCTTCGCTGTGGATGACTTCAGGCAGCCTCGTTACAGCAGCGGTGGTAACT
 TTGAGACACCTTCAAAAAGAGCACCTGCAAAGGGAAGAGCAGGAAGGTCAAAGAGAACAGAGCAAGATCA
 CTATGAGACAGACTACACAACCTGGCGGAGTCCCTGTGATGAGCTGGAGGAGGACTGGATCAGGGAATAT
 CCACCTATCACTTCAAGTCAACAAGACAACGTACAAGAGGAATTTTGCACTGGCCTACAGGAATACA
 AGAGCTTACAATCAGAACTTGTGAGATCAATAAAGAACTCTCCCGTTTGGATAAAGAATTGGATGACTA
 TAGAGAAGAAAGTGAAGAGTACATGGCTGCTGCTGATGAATACAATAGACTGAAGCAAGTGAAGGGATCT
 GCAGATTACAAAAGTAAAGAATCATTGCAAGCAGTTAAAGAGCAAATTGTCACACATCAAGAAGATGG
 TTGGAGACTATGATAGACAGAAAACA

ACGCGTACGCGGCCGCTCGAGCAGAAACTCATCTCAGAAGAGGATCTGGCAGCAAATGATATCCTGGATT
 ACAAGGATGACGACGATAAGGTTTAA

Protein Sequence:

>RC206468 protein sequence
 Red=Cloning site Green=Tags(s)

MSSRPLESPPPYRPFDEFKPNHYAPSNDIYGGEMHVRPMLSQPAYSFYPEDEILHFYKWTSPPGVIRILSM
 LIIVMCIAIFACVASTLAWDRGYGTSLLGGSVGYPYGSGFGSYGSGYGYGYGYGGYDPRAAKGF
 MLAMAFCFIAALVIFVTSVIRSEMSRTRRYLSVIIIVSAILGIMVFIATIVYIMGVNPTAQSSGSLYGS
 QIYALCNQFYTPAATGLYVDQYSYHYCVDPQEAIAIVLGMIIIVAFALIIFFAVKTRRKMDRYDKSNIL
 WDKEHIYDEQPPNVEEWKNSAGTQDVPSPSDYVERVDSPMAYSSNGKVNDKRFYPESSYKSTPVPEV
 VQELPLTSPVDDFRQPRYSNGNFETPSKRPAKGRAGRSKRTEQDHYETDYTTGGESCELEEDWIREFY
 PPITSDQQRQLYKRNFDGLQEYKSLQSELDEINKELSRDKELDDYREESEEYMAAADEYNRLKQVKGS
 ADYKSKKNHCKQLKSKLSHIKKMVG DYDRQKT

TRTRPLEQKLISEEDLAANDILDYKDDDDKV

Chromatograms:

https://cdn.origene.com/chromatograms/mk6231_f03.zip

Restriction Sites:

Sgfl-Mlul

Cloning Scheme:



ACCN: NM_002538

ORF Size: 1566 bp

OTI Disclaimer: Due to the inherent nature of this plasmid, standard methods to replicate additional amounts of DNA in E. coli are highly likely to result in mutations and/or rearrangements. Therefore, OriGene does not guarantee the capability to replicate this plasmid DNA. Additional amounts of DNA can be purchased from OriGene with batch-specific, full-sequence verification at a reduced cost. Please contact our customer care team at custsupport@origene.com or by calling 301.340.3188 option 3 for pricing and delivery.

The molecular sequence of this clone aligns with the gene accession number as a point of reference only. However, individual transcript sequences of the same gene can differ through naturally occurring variations (e.g. polymorphisms), each with its own valid existence. This clone is substantially in agreement with the reference, but a complete review of all prevailing variants is recommended prior to use. [More info](#)

OTI Annotation: This clone was engineered to express the complete ORF with an expression tag. Expression varies depending on the nature of the gene.

Components: The ORF clone is ion-exchange column purified and shipped in a 2D barcoded Matrix tube containing 10ug of transfection-ready, dried plasmid DNA (reconstitute with 100 ul of water).

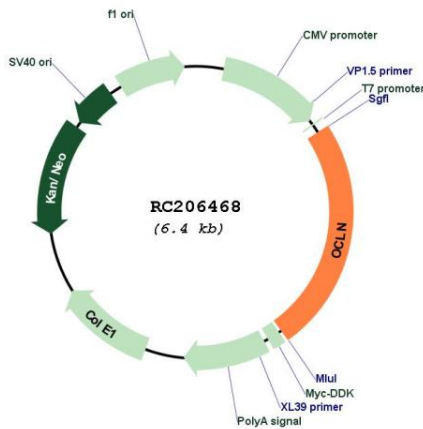
- Reconstitution Method:
1. Centrifuge at 5,000xg for 5min.
 2. Carefully open the tube and add 100ul of sterile water to dissolve the DNA.
 3. Close the tube and incubate for 10 minutes at room temperature.
 4. Briefly vortex the tube and then do a quick spin (less than 5000xg) to concentrate the liquid at the bottom.
 5. Store the suspended plasmid at -20°C. The DNA is stable for at least one year from date of shipping when stored at -20°C.

RefSeq: [NM_002538.4](#)

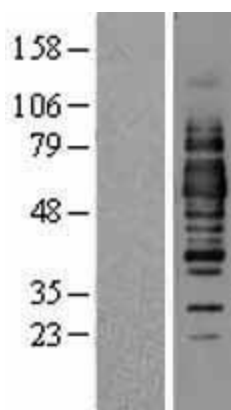
RefSeq Size: 6451 bp
 RefSeq ORF: 1569 bp
 Locus ID: 100506658
 UniProt ID: [Q16625](#)
 Cytogenetics: 5q13.2
 Domains: MARVEL
 MW: 59.1 kDa

Gene Summary: This gene encodes an integral membrane protein that is required for cytokine-induced regulation of the tight junction paracellular permeability barrier. Mutations in this gene are thought to be a cause of band-like calcification with simplified gyration and polymicrogyria (BLC-PMG), an autosomal recessive neurologic disorder that is also known as pseudo-TORCH syndrome. Alternative splicing results in multiple transcript variants. A related pseudogene is present 1.5 Mb downstream on the q arm of chromosome 5. [provided by RefSeq, Apr 2011]

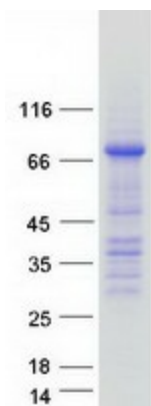
Product images:



Circular map for RC206468



Western blot validation of overexpression lysate (Cat# [LY419249]) using anti-DDK antibody (Cat# [TA50011-100]). Left: Cell lysates from untransfected HEK293T cells; Right: Cell lysates from HEK293T cells transfected with RC206468 using transfection reagent MegaTran 2.0 (Cat# [TT210002]).



Coomassie blue staining of purified OCLN protein (Cat# [TP306468]). The protein was produced from HEK293T cells transfected with OCLN cDNA clone (Cat# RC206468) using MegaTran 2.0 (Cat# [TT210002]).