

## Product datasheet for **RC206462**

### SAP30BP (NM\_013260) Human Tagged ORF Clone

#### Product data:

Product Type:	Expression Plasmids
Product Name:	SAP30BP (NM_013260) Human Tagged ORF Clone
Tag:	Myc-DDK
Symbol:	SAP30BP
Synonyms:	HCNGP; HTRG; HTRP
Mammalian Cell Selection:	Neomycin
Vector:	pCMV6-Entry (PS100001)
E. coli Selection:	Kanamycin (25 ug/mL)
ORF Nucleotide Sequence:	>RC206462 ORF sequence Red=Cloning site Blue=ORF Green=Tags(s)

TTTTGTAATACGACTCACTATAGGGCGGCCGGAATTCGTCGACTGGATCCGGTACCGAGGAGATCTGCC  
GCC**CGATCGCC**

ATGGCGGGGAAGAAGAATGTTCTGTCGTCTCTCGCAGTTACGCGGAAGATTCAGAGCCCGAGTCTGATG  
GCGAGGCTGGAATCGAGGCGGTGGGCAGCGCGCTGAGGAGAAAGGCGGATTGGTATCTGATGCCTATGG  
GGAGGATGACTTTTCTCGTCTAGGGGTGATGAAGATGGTTATGAAGAAGAAGAAGATGAGAACAGTAGA  
CAGTCGGAAGATGACGATTCAGAGACTGAAAACTGAGGCTGATGACCCAAAGGATAATACAGAAGCAG  
AAAAGCGAGACCCCGAGAACTCGTGGCCTCCTTTTCTGAAAGAGTTCGGAACATGTCGCCTGATGAAAT  
CAAGATCCCGCCAGAACCCCTGGCAGATGTTCAAATCACTTGCAAGACAAGATCCAGAAGCTTTATGAA  
CGAAAGATAAAGGAGGGAATGGATATGAACTACATTATCCAAAGGAAGAAAGAATTTTCGGAACCCAGCA  
TCTACGAGAAGCTGATCCAGTTCTGTGCCATTGACGAGCTTGGCACCAACTACCCAAAGGATATGTTTGA  
TCCCATGGCTGGTCTGAGGACTCCTACTATGAGGCATTAGCCAAAGGCCAGAAAATTGAGATGGACAAA  
TTGGAAAAGGCCAAAAGGAGCGAACAAAAATTGAGTTTGTGACGGGCACCAAAAAGGCCACCACGACCA  
ACGCCACGTCCACCACCACTACCACTGCCAGCACAGCTGTTGCAGATGCTCAGAAGAGAAAGAGCAAGTG  
GGATTCGGCTATCCAGTGACAACGATAGCCCAGCCCACCATCTCACCACCACAGCCACCCTGCCAGCT  
GTTGTACGGTCAACCACGCGCCAGCGGCTCCAAGACCACCGTCATCTGCTGTGGGCACCATTGTGA  
AGAAGGCCAAGCAG

**ACGCGT**ACGCGGCCGCTCGAGCAGAAACTCATCTCAGAAGAGGATCTGGCAGCAAATGATATCCTGGATT  
ACAAGGATGACGACGATAAGGTTTAA



[View online »](#)

**Protein Sequence:** >RC206462 protein sequence  
 Red=Cloning site Green=Tags(s)

MAGKKNVLSLAVYAEDSEPESDGEAGIEAVGSAAEEKGGLVSDAYGEDDFSRLLGGDEDDGYEEEEEDENSR  
 QSEDDDDSETEKPEADDPKDNTAEKRDPQELVASFSEVRNMPDEIKIPPEPPGRCSNHLQDKIQKLYE  
 RKIKEGMDMNYIIQRKKEFRNPSIYEKLIQFCAIDELGTNYPKDMFDPHGWSSEDSYYEALAKAQKIEMDK  
 LEKAKKERTKIEFVTGTKKGGTTTATSTTTTTASTAVADAQKRKSKWDSAIPVTTIAQPTILTTTATLPA  
 VVTVTTSASGSKTTVISAVGTIVKKAQ

TRTRPLEQKLISEEDLAANDILDYKDDDDKV

**Chromatograms:** [https://cdn.origene.com/chromatograms/mk6359\\_f11.zip](https://cdn.origene.com/chromatograms/mk6359_f11.zip)

**Restriction Sites:** SgfI-MluI

**Cloning Scheme:**

Cloning sites used for ORF Shuttling:



\* The last codon before the Stop codon of the ORF

**ACCN:** NM\_013260

**ORF Size:** 924 bp

**OTI Disclaimer:** The molecular sequence of this clone aligns with the gene accession number as a point of reference only. However, individual transcript sequences of the same gene can differ through naturally occurring variations (e.g. polymorphisms), each with its own valid existence. This clone is substantially in agreement with the reference, but a complete review of all prevailing variants is recommended prior to use. [More info](#)

**OTI Annotation:** This clone was engineered to express the complete ORF with an expression tag. Expression varies depending on the nature of the gene.

**Components:** The ORF clone is ion-exchange column purified and shipped in a 2D barcoded Matrix tube containing 10ug of transfection-ready, dried plasmid DNA (reconstitute with 100 ul of water).

**Reconstitution Method:**

1. Centrifuge at 5,000xg for 5min.
2. Carefully open the tube and add 100ul of sterile water to dissolve the DNA.
3. Close the tube and incubate for 10 minutes at room temperature.
4. Briefly vortex the tube and then do a quick spin (less than 5000xg) to concentrate the liquid at the bottom.
5. Store the suspended plasmid at -20°C. The DNA is stable for at least one year from date of shipping when stored at -20°C.

**RefSeq:** [NM\\_013260.8](#)

**RefSeq Size:** 2758 bp

**RefSeq ORF:** 927 bp

**Locus ID:** 29115

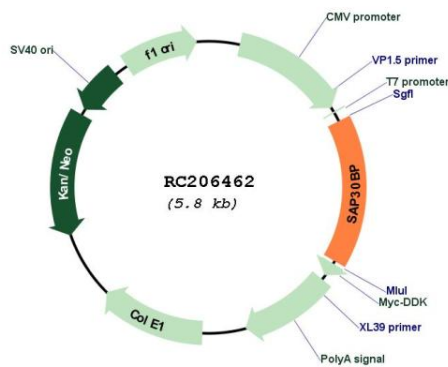
**UniProt ID:** [Q9UHR5](#)

**Cytogenetics:** 17q25.1

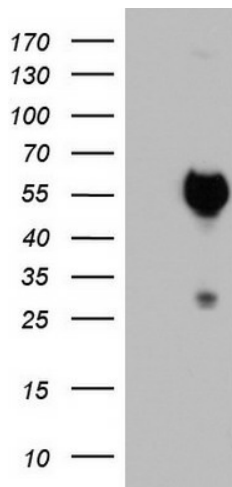
**MW:** 33.9 kDa

**Gene Summary:** Induces cell death. May act as a transcriptional corepressor of a gene related to cell survival. May be involved in the regulation of beta-2-microglobulin genes.[UniProtKB/Swiss-Prot Function]

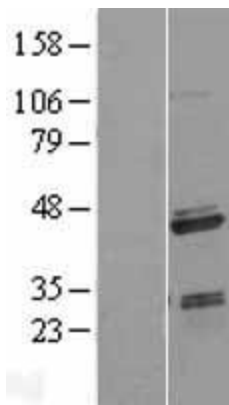
### Product images:



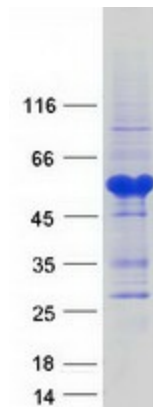
Circular map for RC206462



HEK293T cells were transfected with the pCMV6-ENTRY control (Cat# [PS100001], Left lane) or pCMV6-ENTRY SAP30BP (Cat# RC206462, Right lane) cDNA for 48 hrs and lysed. Equivalent amounts of cell lysates (5 ug per lane) were separated by SDS-PAGE and immunoblotted with anti-SAP30BP (Cat# [TA803237]). Positive lysates [LY415705] (100ug) and [LC415705] (20ug) can be purchased separately from OriGene.



Western blot validation of overexpression lysate (Cat# [LY415705]) using anti-DDK antibody (Cat# [TA50011-100]). Left: Cell lysates from untransfected HEK293T cells; Right: Cell lysates from HEK293T cells transfected with RC206462 using transfection reagent MegaTran 2.0 (Cat# [TT210002]).



Coomassie blue staining of purified SAP30BP protein (Cat# [TP306462]). The protein was produced from HEK293T cells transfected with SAP30BP cDNA clone (Cat# RC206462) using MegaTran 2.0 (Cat# [TT210002]).