

## Product datasheet for **RC206450**

### WFDC1 (NM\_021197) Human Tagged ORF Clone

#### Product data:

Product Type:	Expression Plasmids
Product Name:	WFDC1 (NM_021197) Human Tagged ORF Clone
Tag:	Myc-DDK
Symbol:	WFDC1
Synonyms:	PS20
Mammalian Cell Selection:	Neomycin
Vector:	pCMV6-Entry (PS100001)
E. coli Selection:	Kanamycin (25 ug/mL)
ORF Nucleotide Sequence:	>RC206450 representing NM_021197 Red=Cloning site Blue=ORF Green=Tags(s)

TTTTGTAATACGACTCACTATAGGGCGGCCGGAATTCGTCGACTGGATCCGGTACCGAGGAGATCTGCC  
GCC**CGATCGCC**

ATGCCTTTAACCGCGTGGGGCCGGCAGCTGCAGGAGGCAGATCATCCGGGCTGTGCCTTTGCTAC  
TTCTCCTCCACGCCGGCTCTGCCAAGAATATCTGGAAACGGGCATTGCCTGCGAGGCTGGCCGAGAAATC  
CCGTGCCGAGGAGGGCGCGCCGGCGGCCCGCCGAGCCCGAGCAGACCGCTGCCCGCCGCTCCG  
CGGACGCTGCCCCCGCGCCTGCCAGGCCGCGCGCTGTCAGGGGACTCCGAGTGCCCGCGGCACCGGC  
GCTGCTGTACAACGGATGCGCCTACGCCTGCCTAGAAGCTGTGCCGCCCGCCAGTCTTAGACTGGCT  
GGTGCAGCCGAAACCTCGATGGCTTGGTGGCAATGGCTGGCTCCTGGATGGCCCTGAGGAGGTGTTACAA  
GCAGAGGCGTGCAGCACACGGAGGATGGGGCCGAACCCCTGCTCTGTCCCTCGGGCTATGAGTGCCACA  
TCCTGAGCCCAGGTGACGTGGCCGAAGGTATCCCCAACCGTGGGCAGTGCCTCAAGCAGCGCCGGCAAGC  
AGATGGGCGAATCCTACGACACAACTTTACAAAGAATATCCAGAAGGTGACTCAAAGAATGTGGCAGAA  
CCTGGAAGGGGACAACAGAAGCACTTTACG

**ACGCGT**ACGCGGGCGCTCGAGCAGAACTCATCTCAGAAGAGGATCTGGCAGCAAATGATATCCTGGATT  
ACAAGGATGACGACGATAAGGTTTAA



[View online »](#)

**Protein Sequence:** >RC206450 representing NM\_021197  
 Red=Cloning site Green=Tags(s)

MPLTGVGPGSCRRIIRALCLLLLLHAGSAKNIWKRALPARLAEKSRAEEAGAPGGPRQPRADRCPPPP  
 RTLPPGACQAARCQADSECPHRRCCYNGCAYACLEAVPPPVLVDWL VQPKRWLGGNGWLLDGPEEVLQ  
 AEACSTTEDGAEP LLLCPSGYECHILSPGDVAEGIPNRGQCVKQRRQADGRILRHKLKEYPEGDSKNVAE  
 PGRGQKHFFQ

TRTRPLEQKLISEEDLAANDILDYKDDDDKV

**Chromatograms:** [https://cdn.origene.com/chromatograms/mg3777\\_h05.zip](https://cdn.origene.com/chromatograms/mg3777_h05.zip)

**Restriction Sites:** SgfI-MluI

**Cloning Scheme:**

Cloning sites used for ORF Shuttling:



\* The last codon before the Stop codon of the ORF

**ACCN:** NM\_021197

**ORF Size:** 660 bp

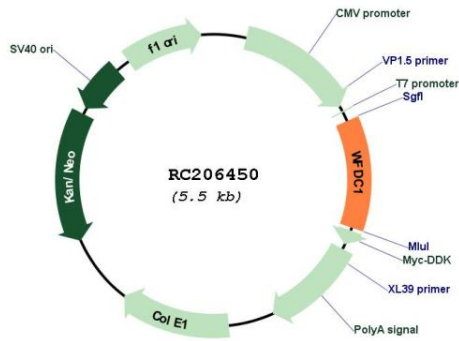
**OTI Disclaimer:** The molecular sequence of this clone aligns with the gene accession number as a point of reference only. However, individual transcript sequences of the same gene can differ through naturally occurring variations (e.g. polymorphisms), each with its own valid existence. This clone is substantially in agreement with the reference, but a complete review of all prevailing variants is recommended prior to use. [More info](#)

**OTI Annotation:** This clone was engineered to express the complete ORF with an expression tag. Expression varies depending on the nature of the gene.

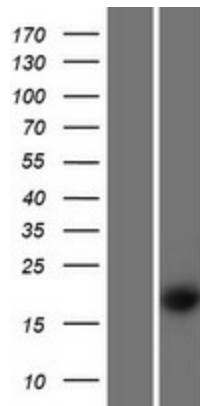
**Components:** The ORF clone is ion-exchange column purified and shipped in a 2D barcoded Matrix tube containing 10ug of transfection-ready, dried plasmid DNA (reconstitute with 100 ul of water).

<b>Reconstitution Method:</b>	<ol style="list-style-type: none"><li>1. Centrifuge at 5,000xg for 5min.</li><li>2. Carefully open the tube and add 100ul of sterile water to dissolve the DNA.</li><li>3. Close the tube and incubate for 10 minutes at room temperature.</li><li>4. Briefly vortex the tube and then do a quick spin (less than 5000xg) to concentrate the liquid at the bottom.</li><li>5. Store the suspended plasmid at -20°C. The DNA is stable for at least one year from date of shipping when stored at -20°C.</li></ol>
<b>Note:</b>	Plasmids are not sterile. For experiments where strict sterility is required, filtration with 0.22um filter is required.
<b>RefSeq:</b>	<a href="#">NM_021197.4</a>
<b>RefSeq Size:</b>	1396 bp
<b>RefSeq ORF:</b>	663 bp
<b>Locus ID:</b>	58189
<b>UniProt ID:</b>	<a href="#">Q9HC57</a>
<b>Cytogenetics:</b>	16q24.1
<b>Domains:</b>	WAP
<b>Protein Families:</b>	Secreted Protein
<b>MW:</b>	20.6 kDa
<b>Gene Summary:</b>	<p>This gene encodes a member of the WAP-type four disulfide core domain family. The WAP-type four-disulfide core domain contains eight cysteines forming four disulfide bonds at the core of the protein, and functions as a protease inhibitor in many family members. This gene is mapped to chromosome 16q24, an area of frequent loss of heterozygosity in cancers, including prostate, breast and hepatocellular cancers and Wilms' tumor. This gene is downregulated in many cancer types and may be involved in the inhibition of cell proliferation. The encoded protein may also play a role in the susceptibility of certain CD4 memory T cells to human immunodeficiency virus infection. Alternative splicing results in multiple transcript variants. [provided by RefSeq, Sep 2013]</p>

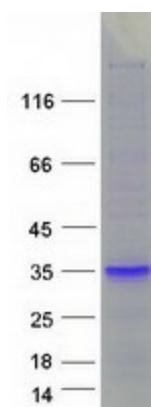
Product images:



Circular map for RC206450



Western blot validation of overexpression lysate (Cat# [LY412036]) using anti-DDK antibody (Cat# [TA50011-100]). Left: Cell lysates from untransfected HEK293T cells; Right: Cell lysates from HEK293T cells transfected with RC206450 using transfection reagent MegaTran 2.0 (Cat# [TT210002]).



Coomassie blue staining of purified WFDC1 protein (Cat# [TP306450]). The protein was produced from HEK293T cells transfected with WFDC1 cDNA clone (Cat# RC206450) using MegaTran 2.0 (Cat# [TT210002]).