

## Product datasheet for **RC206447**

### IL22RA1 (NM\_021258) Human Tagged ORF Clone

#### Product data:

Product Type:	Expression Plasmids
Product Name:	IL22RA1 (NM_021258) Human Tagged ORF Clone
Tag:	Myc-DDK
Symbol:	IL22RA1
Synonyms:	CRF2-9; IL22R; IL22R1
Mammalian Cell Selection:	Neomycin
Vector:	pCMV6-Entry (PS100001)
E. coli Selection:	Kanamycin (25 ug/mL)



[View online »](#)

**ORF Nucleotide Sequence:**

>RC206447 ORF sequence  
 Red=Cloning site Blue=ORF Green=Tags(s)

TTTTGTAATACGACTCACTATAGGGCGGCCGGAATTCGTCGACTGGATCCGGTACCGAGGAGATCTGCC  
 GCC**GCGATCGCC**

ATGAGGACGCTGCTGACCATCTTGACTGTGGGATCCCTGGCTGCTCAGCCCCCTGAGACCCTCGGATC  
 TGCTCCAGCACGTGAAATTCAGTCCAGCAACTTTGAAAACATCCTGACGTGGGACAGCGGGCCGGAGGG  
 CACCCAGACACGGTCTACAGCATCGAGTATAAGACGTACGGAGAGAGGGACTGGGTGGCAAAGAAGGGC  
 TGTGAGCGGATCACCCGGAAGTCTGCAACCTGACGGTGGAGACGGGCAACCTCACGGAGCTCTACTATG  
 CCAGGGTCACCGCTGTCAGTGGGGAGGCGGTGAGCCACCAAGATGACTGACAGGTTGAGTCTCTGCA  
 GCACACTACCCTCAAGCCACCTGATGTGACCTGTATCTCAAAGTGAGATCGATTGAGATGATTGTTTAT  
 CCTACCCACAGCCCATCCGTGCAGGCGATGGCCACCGGTAACCTGGAAGACATCTTCCATGACCTGT  
 TCTACCACTTAGAGCTCCAGGTCAACCGCACCTACCAATGCACCTTGGAGGGAAGCAGAGAGAATATGA  
 GTTCTTCGGCCTGACCCCTGACACAGAGTTCCTTGGCACCATCATGATTTGCGTTCCACCTGGGCAAG  
 GAGAGTGCCCTACATGTGCCGAGTGAAGACACTGCCAGACCGGACATGGACCTACTCCTTCTCCGGAG  
 CCTTCTGTTCTCCATGGGCTTCTCGTCGAGTACTCTGCTACCTGAGCTACAGATATGTCACCAAGCC  
 GCCTGCACCTCCCAACTCCCTGAACGTCCAGCGAGTCTGACTTCCAGCCGCTGCGCTTCCAGGAG  
 CACGTCCTGATCCCTGTCTTTGACCTCAGCGGCCCCAGCAGTCTGGCCAGCCTGTCCAGTACTCCAGA  
 TCAGGGTGTCTGGACCCAGGGAGCCTGCAGGAGCTCCACAGCGGCATAGCCTGTCCGAGATCACCTACTT  
 AGGGCAGCCAGACATCTCCATCTCCAGCCCTCCAACGTGCCACCTCCCAAGATCCTTCCCCACTGTCC  
 TATGCCCAACAGCTGCCCTGAGGTGCGGCCCATCTATGCACCTCAGGTGACCCCGAAGCTCAAT  
 TCCCATTTACGCCCCACAGGCCATCTTAAGTCCAGCCTTCTCCTATGCCCTCAAGCCACTCCGGA  
 CAGCTGGCCTCCCTCCTATGGGGTATGCATGGAAGGTTCTGGCAAAGACTCCCAACTGGGACACTTCT  
 AGTCCTAAACACCTTAGGCCTAAAGTCCAGCTTCAAGAAAGAGCCACCAGCTGGAAGCTGCATGTTAGGTG  
 GCCTTCTCTGCAGGAGGTGACCTCCTTGGCTATGGAGGAATCCCAAGAAGCAAAATCATTGCACAGCC  
 CCTGGGGATTTGCACAGACAGAACATCTGACCCAAATGTGCTACACAGTGGGAGGAAGGGACACCACAG  
 TACCTAAAGGGCCAGTCCCTCCTCCTCAGTCCAGATCGAGGGCCACCCCATGTCCCTCCCTTTG  
 AACCTCCTTCCCGTCCATGTTCCCTCGGACCAAGTCCAAGTCCCTGGGGCTGCTGGAGTCCCTTGT  
 GTGTCCCAAGGATGAAGCAAGAGCCAGCCCTGAGACCTCAGACCTGGAGCAGCCACAGAAGTGGAT  
 TCTTTTTAGAGGCCTGGCCCTGACTGTGACGTGGGAGTCC

**ACGCGT**ACGCGGCCGCTCGAGCAGAAACTCATCTCAGAAGAGGATCTGGCAGCAAATGATATCCTGGATT  
 ACAAGGATGACGACGATAAGGTTTAA

**Protein Sequence:**

>RC206447 protein sequence  
 Red=Cloning site Green=Tags(s)

MRTLLTILTVGSLAAHAPEDPSDLLQHVKFQSSNFENILTWDSGPEGTPDVTVYSIEYKTYGERDWWAKKG  
 CQRITRKSCLNLTVEGNLTLEYARVTAVSAGGRSATKMTDRFSSLQHTTLKPPDVTCISKVRSIQMIVH  
 PTPPIRAGDGHRLTLEDIFHDLFYHLELQVNRTYQMHLGGKQREYEFFGLTPDTEFLGTIMICVPTWAK  
 ESAPYMCRVKTLPDRTWTYSFSGAFLFSMGFLVAVLCYLSYRYVTKPPAPPNSLNVQRVLTFOPLRFIQE  
 HVLIPVFDLSGPSSLAQPVOYSQIRVSGPREPAGAPQRHSLSEITYLQQPDISILQPSNVPPPQILSPLS  
 YAPNAAPEVGPSSYAPQVTPEAQFPFYAPQAIKVVQSSYAPQATPDSWPPSYGVCMEGSGKDSPTGTL  
 SPKHLRPKGQLQKEPPAGSCMLGGLSLQEVTSLAMEESQEAQSLHQLPGICTDRTSDPNVLHSGEETPQ  
 YLKGQLPLLSSVQIEGHPMSLPLQPPSRPCSPSDQGPSWGLLESVCPKDEAKSPAPETSDLEQPTELD  
 SLFRGLALTVQWES

**TR**TRPLEQKLISEEDLAANDILDYKDDDDKV

**Chromatograms:**

[https://cdn.origene.com/chromatograms/mk6332\\_b01.zip](https://cdn.origene.com/chromatograms/mk6332_b01.zip)

**Restriction Sites:**

Sgfl-Mlul

**Cloning Scheme:**


**ACCN:** NM\_021258

**ORF Size:** 1722 bp

**OTI Disclaimer:** The molecular sequence of this clone aligns with the gene accession number as a point of reference only. However, individual transcript sequences of the same gene can differ through naturally occurring variations (e.g. polymorphisms), each with its own valid existence. This clone is substantially in agreement with the reference, but a complete review of all prevailing variants is recommended prior to use. [More info](#)

**OTI Annotation:** This clone was engineered to express the complete ORF with an expression tag. Expression varies depending on the nature of the gene.

**Components:** The ORF clone is ion-exchange column purified and shipped in a 2D barcoded Matrix tube containing 10ug of transfection-ready, dried plasmid DNA (reconstitute with 100 ul of water).

- Reconstitution Method:**
1. Centrifuge at 5,000xg for 5min.
  2. Carefully open the tube and add 100ul of sterile water to dissolve the DNA.
  3. Close the tube and incubate for 10 minutes at room temperature.
  4. Briefly vortex the tube and then do a quick spin (less than 5000xg) to concentrate the liquid at the bottom.
  5. Store the suspended plasmid at -20°C. The DNA is stable for at least one year from date of shipping when stored at -20°C.

**RefSeq:** [NM\\_021258.4](#)

**RefSeq Size:** 2988 bp

**RefSeq ORF:** 1725 bp

**Locus ID:** 58985

**UniProt ID:** [Q8N6P7](#)

**Cytogenetics:** 1p36.11

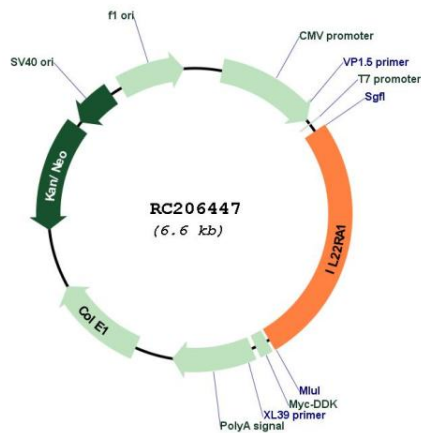
**Protein Families:** Druggable Genome, Transmembrane

**Protein Pathways:** Cytokine-cytokine receptor interaction, Jak-STAT signaling pathway

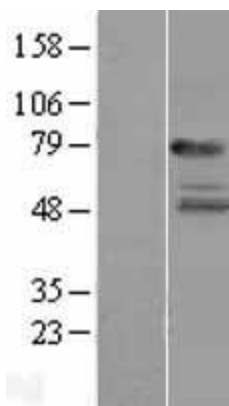
**MW:** 63.1 kDa

**Gene Summary:** The protein encoded by this gene belongs to the class II cytokine receptor family, and has been shown to be a receptor for interleukin 22 (IL22). IL22 receptor is a protein complex that consists of this protein and interleukin 10 receptor, beta (IL10BR/CRFB4), a subunit also shared by the receptor complex for interleukin 10 (IL10). This gene and interleukin 28 receptor, alpha (IL28RA) form a cytokine receptor gene cluster in the chromosomal region 1p36. [provided by RefSeq, Jul 2008]

**Product images:**



Circular map for RC206447



Western blot validation of overexpression lysate (Cat# [LY411976]) using anti-DDK antibody (Cat# [TA50011-100]). Left: Cell lysates from untransfected HEK293T cells; Right: Cell lysates from HEK293T cells transfected with RC206447 using transfection reagent MegaTran 2.0 (Cat# [TT210002]).