

Product datasheet for **RC206446**

PAMCI (RASSF9) (NM_005447) Human Tagged ORF Clone

Product data:

Product Type:	Expression Plasmids
Product Name:	PAMCI (RASSF9) (NM_005447) Human Tagged ORF Clone
Tag:	Myc-DDK
Symbol:	PAMCI
Synonyms:	P-CIP1; PAMCI; PCIP1
Mammalian Cell Selection:	Neomycin
Vector:	pCMV6-Entry (PS100001)
E. coli Selection:	Kanamycin (25 ug/mL)



[View online »](#)

ORF Nucleotide
Sequence:

>RC206446 ORF sequence
Red=Cloning site Blue=ORF Green=Tags(s)

TTTTGTAATACGACTCACTATAGGGCGGCCGGAATTCGTCGACTGGATCCGGTACCGAGGAGATCTGCC
GCCGCGATCGCC

ATGGCTCCCTTTGGAAGAACTTGTCTAAAGACTCGGCATAAAAACAGATCTCCAATAAGACATGGATT
CAGAAGAGAAGGAAATTGTGGTTTGGGTTTGCCAAGAAGAGAAGCTTGTCTGTGGGCTGACTAAACGCAC
CACCTCTGCTGATGTCATCCAGGCTTGTCTTGAGGAACATGAGGCTACGTTTGGAGAGAAAACGATTTCTT
CTGGGGAAGCCCAGTGATTACTGCATCATAGAGAAGTGGAGAGGCTCCGAAAGGGTTCTTCTCCACTAA
CTAGAATCCTGAAGCTTTGAAAGCGTGGGAGATGAGCAGCCCAATATGCAATTTGTTTGGTTAAAGC
AGATGCTTTTCTCCAGTTCCTTGTGGCGGACAGCTGAAGCCAAATTAGTGCAAAACACAGAAAAATTG
TGGGAGCTCAGCCAGCAAACACTACATGAAGACTTACCACCAGATAAACAAAAAGAATAGTCAGGAAAA
CTTCCGAAACTGGCTAAAATTAAGCAGGACACAGTTTCTCATGATCGAGATAAATGGAGACATTAGT
TCATCTGATCATTCCCAGGACCATACTATTCATCAGCAAGTCAAGAGAATGAAAGAGCTGGATCTGGAA
ATTGAAAAGTGTGAAGCTAAGTTCATCTTGATCGAGTAGAAAAATGATGGAGAAAACATGTTCCAGGATG
CATATTTAATGCCAGTTTCAGTGAAGTTGAGCAAAATCTAGACTTGCAATGAGGAAAACAGACTCT
GGAGGACTGAGCGAAAGTGTGAATGAACAGCTGGAAGAAGCACTGAAATATTACCGAATACTCATT
GATAAGCTCTCTGCTGAAATAGAAAAAGAGTAAAAAGTGTGGCATTGATATAAATGAAGATGCGGAAAG
GGGAAGCTGCAAGTGAAGTGAAGTCTAATTTAGAGAGTGTAAAGTGTGATTTGGAGAAAAGCATGAA
AGCTGGTTTAAAATCACTCTCATTGAGTGGCATCCAGAAAGAGATTAATACAGTGACTCATTGCTT
CAGATGAAAGCAAAGAATGAAGTCTGGCCAAAGGAATCAATTCACATACAGCAACAAGATG
GGTCCAGTTAAAGGAAAACAGAGCGAAGGAATCTGAGGTTCCAGTAGCAATGGGAGATTCTCCCTT
TACTCAAAGAGTATTTAGCAATTACACAAATGACACAGACTCGGACACTGGTATCAGTTCAACCACAGT
CAGGACTCCGAAACAACAGTAGGAGATGTGGTGTGTTGCAACA

ACGCGTACGCGGCCGCTCGAGCAGAACTCATCTCAGAAGAGGATCTGGCAGCAATGATATCCTGGATT
ACAAGGATGACGACGATAAGGTTTAA

Protein Sequence:

>RC206446 protein sequence
Red=Cloning site Green=Tags(s)

MAPFGRNLLKTRHKNSPTKMDSEEKIVVWVCQEEKLVCGLTKRTTSADVIQALLEEHEATFGEKRF
LGKPSDYCIIEKWRGSEVLPPLTRILKLWAWGDEQPNMQFVLVKADAFLPVPLWRTAEAKLVQNT
WELSPANMYMKTLPDPKQKRIVRKTFRKLAKIKQDTVSHDRDNMETLVHLIISQDHTIHQQV
KRMKELDLEIEKCEAKFHLDREVNDGENYVQDAYLMPFSFSEVEQNLDLQYEENQTLLEDLSESD
GIEQLEERLKYRILIDKL SAEIEKEVKSVCIDINEDAEGEAASELESSNLESVKCDLEKSMKAGL
KIHSHLSGIQKEIKYSDSLLQMKAKEYELLAKEFNSLHISNKDGCQLKENRAKESEVPSN
GEIPPFTRQRFVSNYNTDSDTGISNHSQDSETTVGDVLLST

TRTRPLEQKLISEEDLAANDILDYKDDDDKV

Chromatograms:

https://cdn.origene.com/chromatograms/mk6520_b03.zip

Restriction Sites:

SgfI-MluI

Cloning Scheme:



ACCN: NM_005447

ORF Size: 1305 bp

OTI Disclaimer: The molecular sequence of this clone aligns with the gene accession number as a point of reference only. However, individual transcript sequences of the same gene can differ through naturally occurring variations (e.g. polymorphisms), each with its own valid existence. This clone is substantially in agreement with the reference, but a complete review of all prevailing variants is recommended prior to use. [More info](#)

OTI Annotation: This clone was engineered to express the complete ORF with an expression tag. Expression varies depending on the nature of the gene.

Components: The ORF clone is ion-exchange column purified and shipped in a 2D barcoded Matrix tube containing 10ug of transfection-ready, dried plasmid DNA (reconstitute with 100 ul of water).

- Reconstitution Method:
1. Centrifuge at 5,000xg for 5min.
 2. Carefully open the tube and add 100ul of sterile water to dissolve the DNA.
 3. Close the tube and incubate for 10 minutes at room temperature.
 4. Briefly vortex the tube and then do a quick spin (less than 5000xg) to concentrate the liquid at the bottom.
 5. Store the suspended plasmid at -20°C. The DNA is stable for at least one year from date of shipping when stored at -20°C.

RefSeq: [NM_005447.4](#)

RefSeq Size: 1796 bp

RefSeq ORF: 1308 bp

Locus ID: 9182

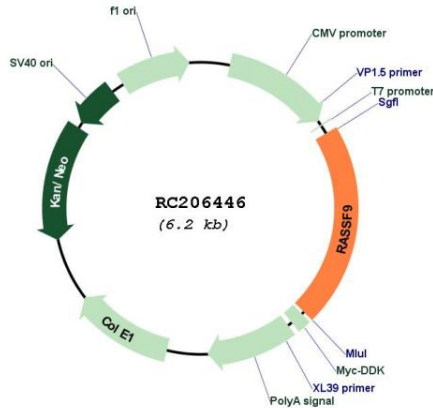
UniProt ID: [O75901](#)

Cytogenetics: 12q21.31

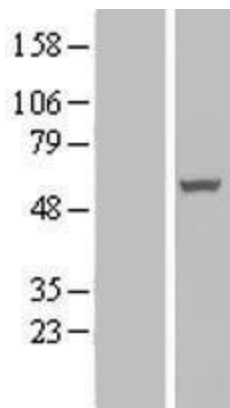
MW: 50 kDa

Gene Summary: The protein encoded by this gene localizes to perinuclear endosomes. This protein associates with peptidylglycine alpha-amidating monooxygenase, and may be involved with the trafficking of this enzyme through secretory or endosomal pathways. [provided by RefSeq, Jul 2008]

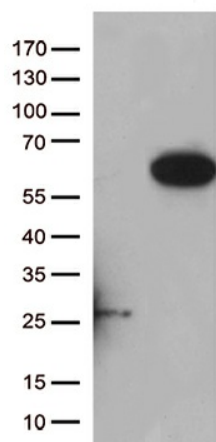
Product images:



Circular map for RC206446



Western blot validation of overexpression lysate (Cat# [LY417288]) using anti-DDK antibody (Cat# [TA50011-100]). Left: Cell lysates from untransfected HEK293T cells; Right: Cell lysates from HEK293T cells transfected with RC206446 using transfection reagent MegaTran 2.0 (Cat# [TT210002]).



HEK293T cells were transfected with the pCMV6-ENTRY control (Cat# [PS100001], Left lane) or pCMV6-ENTRY RASSF9 (Cat# RC206446, Right lane) cDNA for 48 hrs and lysed. Equivalent amounts of cell lysates (5 ug per lane) were separated by SDS-PAGE and immunoblotted with anti-RASSF9 (Cat# [TA809393])(1:500). Positive lysates [LY417288] (100ug) and [LC417288] (20ug) can be purchased separately from OriGene.