

Product datasheet for RC206445

SERPINI2 (NM_006217) Human Tagged ORF Clone

Product data:

Product Type:	Expression Plasmids
Product Name:	SERPINI2 (NM_006217) Human Tagged ORF Clone
Tag:	Myc-DDK
Symbol:	SERPINI2
Synonyms:	MEPI; PANCPIN; PI14; TSA2004
Mammalian Cell Selection:	Neomycin
Vector:	pCMV6-Entry (PS100001)
E. coli Selection:	Kanamycin (25 ug/mL)
ORF Nucleotide Sequence:	>RC206445 ORF sequence Red=Cloning site Blue=ORF Green=Tags(s)

TTTTGTAATACGACTCACTATAGGGCGGCCGGAATTCGTCGACTGGATCCGGTACCGAGGAGATCTGCC
GCC**CGATCGCC**

ATGATCCAAAACCTGATGAGAGAAGTCAAAATGGACACAATCTTCTGTGGAGTCTTCTATTGCTGTTTT
TTGGAAGTCAAGCCTCAAGATGCTCAGCTCAAAAAATACCGAATTTGCAGTGGATCTTTATCAAGAGGT
TTCCTTATCTCATAAGGACAACATTATATTTTACCCCTTGAATAACTTTGGTTCTTGAGATGGTACAA
CTGGGAGCCAAAGGAAAAGCACAGCAGCAGATAAGACAACTTTAAAACAACAGGAAACCTCAGCTGGGG
AAGAATTTTTTGTACTGAAGTCATTTTTCTCTGCCATCTCAGAGAAAAACAAGAATTTACATTTAATCT
TGCCAATGCCCTTACCTTCAAGAAGGATTCAGTGTGAAAGAACAGTATCTCCATGGCAACAAGGAATTT
TTTCAGAGTGCTATAAACTGGTGGATTTCAAGATGCAAAAGGCTTGTGCAGAGATGATAAGTACCTGGG
TAGAAAAGAAAAACAGATGGAAAAATTAAGACATGTTTTTCAGGGGAAGAATTTGGCCCTCTGACTCGGCT
TGTCTGGTGAATGCTATTTATTTCAAAGGAGATTGGAACAGAAATTCAGAAAAGGACACACAGCTG
ATAAATTTTACTAAGAAAAATGGTTCAACTGTCAAATTTCCAATGATGAAGGCTCTTCTGAGAACAAAAT
ATGGTTATTTTTCTGAATCTTCCCTGAACCTCAAGTTTTAGAAATGTCTTACAAAGGTGATGAATTTAG
CTTAATTATCATACTTCTGCAGAAGGTATGGATATAGAAGAAGTGAAAAACTAATTACTGCTCAACAA
ATCCTAAAATGGCTCTCTGAGATGCAAGAAGAGGAGTAGAAATAGCCCTCCCTAGATTTAAAGTAGAAC
AAAAAGTAGACTTCAAAGACGTTTTGTATTCTTTGAACATAACCGAGATATTTAGTGGTGGCTGCGACCT
TTCTGGAATAACAGATTCATCTGAAGTGTATGTTTCCCAAGTGACGCAAAAAGTTTTCTTTGAGATAAAT
GAAGATGGTAGTGAAGCTGCAACATCAACTGGCATAACATCCCTGTGATCATGAGTCTGGCTCAAAGCC
AATTTATAGCAAATCATCCATTTCTGTTTATTATGAAGCATAATCCAACAGAATCAATTCTGTTTATGGG
AAGAGTGACAAATCCTGACACCCAGGAGATAAAAGGAAGAGATTTAGATTCAGT

ACGCGTACGCGGCCGCTCGAGCAGAACTCATCTCAGAAGAGGATCTGGCAGCAATGATATCCTGGATT
ACAAGGATGACGACGATAAGGTTTAA



[View online »](#)

Protein Sequence: >RC206445 protein sequence
Red=Cloning site Green=Tags(s)

MIQNL MREVKMDTIFLWSLLLLFFGSQASRCSAQKNTEFAVDLYQEVSLSHKDNIIFSPLGITLVLEMVQ
 LGAKGKAQQQIRQTLKQQETSAGEEFFVLKSFFSAISEKKQEF TNLANALYLQEGFTVKEQYLHGNKEF
 FQSAIKLVDFQDAKACAEMISTWVERKTDGKIKDMFSGEEFGPLTRLVLVNAIYFKGDWKQKFRKEDTQL
 INFTKKNGSTVKIPMMKALLRKYGYFSESSLNYQVLELSYKGFDEFSLIIILPAEGMDIEEVEKLITAQQ
 ILKWLSEMQEEVEISLPRFKVEQKVDVLYSLNITEIFSGGCDLSGITDSSEVYVSQVTQKVFFEIN
 EDGSEAATSTGIHIPVIMSLAQSQFIANHPFLFIMKHNPTESILFMGRVTNPDTQEIKGRDLDSL

TRTRPLEQKLISEEDLAANDILDYKDDDDKV

Chromatograms: https://cdn.origene.com/chromatograms/mk6682_c10.zip

Restriction Sites: SgfI-MluI

Cloning Scheme:



* The last codon before the Stop codon of the ORF

ACCN: NM_006217

ORF Size: 1248 bp

OTI Disclaimer: The molecular sequence of this clone aligns with the gene accession number as a point of reference only. However, individual transcript sequences of the same gene can differ through naturally occurring variations (e.g. polymorphisms), each with its own valid existence. This clone is substantially in agreement with the reference, but a complete review of all prevailing variants is recommended prior to use. [More info](#)

OTI Annotation: This clone was engineered to express the complete ORF with an expression tag. Expression varies depending on the nature of the gene.

Components: The ORF clone is ion-exchange column purified and shipped in a 2D barcoded Matrix tube containing 10ug of transfection-ready, dried plasmid DNA (reconstitute with 100 ul of water).

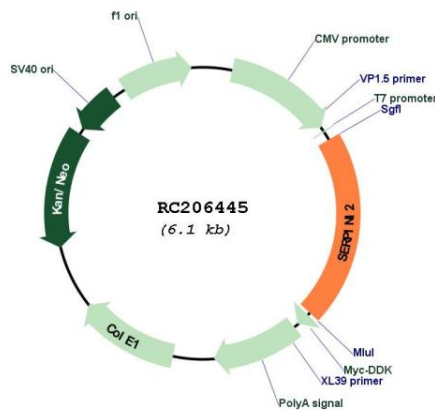
Reconstitution Method:

1. Centrifuge at 5,000xg for 5min.
2. Carefully open the tube and add 100ul of sterile water to dissolve the DNA.
3. Close the tube and incubate for 10 minutes at room temperature.
4. Briefly vortex the tube and then do a quick spin (less than 5000xg) to concentrate the liquid at the bottom.
5. Store the suspended plasmid at -20°C. The DNA is stable for at least one year from date of shipping when stored at -20°C.

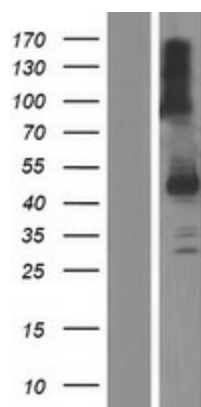
RefSeq Size: 1678 bp
RefSeq ORF: 1218 bp
Locus ID: 5276
UniProt ID: [O75830](#)
Cytogenetics: 3q26.1
Domains: SERPIN
Protein Families: Druggable Genome, Secreted Protein
MW: 47.4 kDa

Gene Summary: The gene encodes a member of a family of proteins that acts as inhibitors of serine proteases. These proteins function in the regulation of a variety of physiological processes, including coagulation, fibrinolysis, development, malignancy, and inflammation. Expression of the encoded protein may be downregulated during pancreatic carcinogenesis. Alternative splicing results in multiple transcript variants for this gene. [provided by RefSeq, Jan 2013]

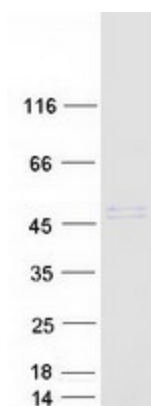
Product images:



Circular map for RC206445



Western blot validation of overexpression lysate (Cat# [LY416796]) using anti-DDK antibody (Cat# [TA50011-100]). Left: Cell lysates from untransfected HEK293T cells; Right: Cell lysates from HEK293T cells transfected with RC206445 using transfection reagent MegaTran 2.0 (Cat# [TT210002]).



Coomassie blue staining of purified SERPINI2 protein (Cat# [TP306445]). The protein was produced from HEK293T cells transfected with SERPINI2 cDNA clone (Cat# RC206445) using MegaTran 2.0 (Cat# [TT210002]).