

Product datasheet for **RC206442**

TSKS (NM_021733) Human Tagged ORF Clone

Product data:

Product Type:	Expression Plasmids
Product Name:	TSKS (NM_021733) Human Tagged ORF Clone
Tag:	Myc-DDK
Symbol:	TSKS
Synonyms:	PPP1R161; STK22S1; TSKS1; TSSKS
Mammalian Cell Selection:	Neomycin
Vector:	pCMV6-Entry (PS100001)
E. coli Selection:	Kanamycin (25 ug/mL)



[View online »](#)

ORF Nucleotide Sequence:

>RC206442 representing NM_021733
 Red=Cloning site Blue=ORF Green=Tags(s)

TTTTGTAATACGACTCACTATAGGGCGGCCGGAATTCGTCGACTGGATCCGGTACCGAGGAGATCTGCC
 GCC**CGGATCGCC**

ATGGCGAGCGTGGTGGTGAAGACGATCTGGCAGTCCAAGAGATCCATGAGGCCGGGACACCCCCACGG
 GGGTGGAGAGCTGCTCCAGCTAGTCCCAGAGGCTCCCCGGAGGGTGACCAGCCGGGCAAGGGGATCCC
 GAAGAAAAGAAGGCCGTGTCGTTCCACGGGTGGAGCCCAGATGTCCATCAGCCATGCACTGGTGC
 CTGAACCTCAAACGGTCTCGGCCCTGCACCAACGTGCTACTGCTCAACCTGGCCGCCATGGAGCCACTG
 ACTCCACGGGGACAGACTCCACAGTGAAGACCTCAGCGGCCAACTCACACTGGCTGGGCCCCCTGCCTC
 CCCTACCTACCTGGGATCCGGATGACGCAGACATCACGAAATCCTGAGTGGGGTCAACAGTGGATTG
 GTCGCGCCAAAGACTCCATCACCAGCTGAAGGAAAAGACCAACCGGGTTAACAGCACGTGCAGTCTC
 TGCAGAGCGAGTGTCTGTGCTGAGCGAGAATCTGGAGAGAAGGGCGCAAGAGGCAGAAGAGTTGGAGGG
 GTACTGCATTCAACTCAAGGAGAACTGCTGGAAGGTGACCCGGTCTGTGGAAGATGCTGAAATCAAACC
 AACGCTTGAAGCAGAATTCTGCCCTGCTGGAGGAGAAGCTGCGCTACCTCCAGCAGCAGCTGCAGGATG
 AGACGCCCGCAGCGCAGGAGGCCGAGCTGCAGGAGCCGGAGGAGAAGCAGGAGCCGGAGGAGAAGCAGGA
 GCCGGAGGAGAAGCAGAAGCCGGAGGCTGGCCTCTCTGGAACAGCCTGGGCCCGCCAGCTCCAG
 GGCTGCCCGGCCCGCCAGGGAGTCCCGACAAACCCTCGCGGCCACACGGCCTGGTCCCCGAGGCTGGG
 GAATGGGGCTCGGGCTGGCGAGGGCCCTACGTGAGCGAGCAGGAATTGCAGAAGCTGTTACCCGGCAT
 CGAAGAGCTGAGGAGAGAGGTGTCTCACTGACCGCCCGTGGCATCAGGAGGAGGGGCGGTGCAGGAA
 GCCCTGCGGCTGCTCGGGGGCTGGCGGCAGGGTGCACGGCTTCTAGCCAGTGGGAGCGGGCACAGC
 GCGAACAGGCACAGACGGCGCGGACTTGCAGGAGCTGCAGAGTGGGGCGGATGAGCTGTCAACCTGTT
 GGAGCGTCCAGCAGTGTCTGTGGCTTCACTGAGGAGCGAACTGGAGGGGCTGGGCCCACTGAAACCCATT
 CTGGAGGAGTTCGGGCGCAATTCAGAACTCTGGAAGAGGGCCTGACCTCTCCATGAACCTGGATCGGT
 CCCACCAAGGCAACTGTGCCCGCTGTGCCAGCCAGGGGTGCGAGTTGTCTACGGAGTCCCTGCAGCAGCT
 GCTGGACCGAGCAGTACCTCACTAGTGGACGAGGTGAAGCAGAGGGGCTGACTCCTGCCTGTCCAGC
 TGTGAGAGGCTACACAAGAAGATTCTGGAGCTGGAGCGCCAGGCCTTAGCCAAACACGTGAGGCGAGG
 CCCTGAGTCCACCTTCGGCTGGCCAAAGACGAGGCCCTGCGGGCAAGAACCTACTGCTGACAGACAA
 GATGAAGCCAGAGGAGAAGATGGCCACTCTGGACCATCTACACTGAAGATGTGCTCCCTCCACGATCAT
 CTCAGCAACTGCCACTTGAGGGTCCACGGGAACAATGGGGGAGGCAGCAGTGCAGGAACCCCCCAA
 AACAGGGGGCTCAGCCCTGAACAA

ACGCGTACGCGGCCGCTCGAGCAGAACTCATCTCAGAAGAGGATCTGGCAGCAAATGATATCCTGGATT
 ACAAGGATGACGACGATAAGGTTTAA

Protein Sequence:

>RC206442 representing NM_021733
 Red=Cloning site Green=Tags(s)

MASVVVKTIWQSKEIHEAGDPTGVESCSQLVPEAPRRVTSRAKGIPKPKKAVSFHGVPEQMSHQPMHWC
 LNLKRSSACTNVSLLNLAAMEPTDSTGTDSTVEDLSGQLTLAGPPASPTLPWDPDDADITEILSGVNSGL
 VRAKDSITSLKEKTNRVNQHVQSLQSECSVLSENLEERRRQEAEELEGYCIQLKENCWKVTRSVDAEIKT
 NVLKQNSALLEEKLRYLQQQLQDETPRRQEAELQEPEEKQEPEEKQEPEEKQKPEAGLSWNSLGAATSQ
 GCPGPPGSPDKPSRPHGLVPAGWGMGPRAEGPYVSEQLQKLFITGIEELRREVSSLTARWHQEEGAVQE
 ALRLLGGLGGRVDGFLGQWERAQREQAQTARDLQELRGRADELCTMVERSAVSVASLRSELEGLPLKPI
 LEEFGRQFQNSRRGPDLSMNLDRSHQGNARCASQGSQSLSTESLQQLDRALTSLVDEVKQRGLTPACPS
 CQRLHKKILELERQALAKHVRAEALSSTLRLAQDEALRAKNNLLTDKMKPEEKMATLDHLHLKMCSLHDH
 LSNLPLEGSTGTMGGSSAGTPPKQGGSAPEQ

TRTRPLEQKLISEEDLAANDILDYKDDDDKV

Chromatograms:

https://cdn.origene.com/chromatograms/mk8104_b10.zip

Restriction Sites: SgfI-MluI

Cloning Scheme:



ACCN: NM_021733

ORF Size: 1776 bp

OTI Disclaimer: The molecular sequence of this clone aligns with the gene accession number as a point of reference only. However, individual transcript sequences of the same gene can differ through naturally occurring variations (e.g. polymorphisms), each with its own valid existence. This clone is substantially in agreement with the reference, but a complete review of all prevailing variants is recommended prior to use. [More info](#)

OTI Annotation: This clone was engineered to express the complete ORF with an expression tag. Expression varies depending on the nature of the gene.

Components: The ORF clone is ion-exchange column purified and shipped in a 2D barcoded Matrix tube containing 10ug of transfection-ready, dried plasmid DNA (reconstitute with 100 ul of water).

- Reconstitution Method:**
1. Centrifuge at 5,000xg for 5min.
 2. Carefully open the tube and add 100ul of sterile water to dissolve the DNA.
 3. Close the tube and incubate for 10 minutes at room temperature.
 4. Briefly vortex the tube and then do a quick spin (less than 5000xg) to concentrate the liquid at the bottom.
 5. Store the suspended plasmid at -20°C. The DNA is stable for at least one year from date of shipping when stored at -20°C.

RefSeq: [NM_021733.2](#)

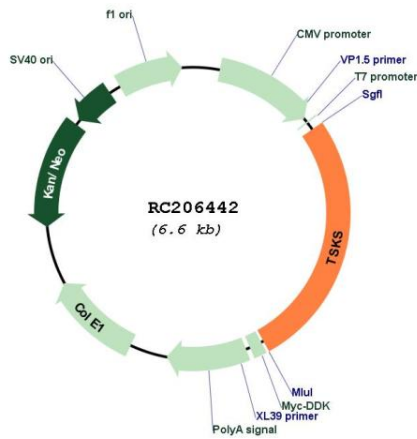
RefSeq Size: 1812 bp

RefSeq ORF: 1779 bp

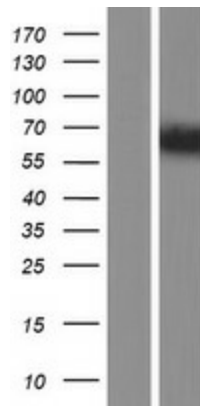
Locus ID: 60385

UniProt ID: [Q9UJT2](#)
Cytogenetics: 19q13.33
Protein Families: Druggable Genome
MW: 65.1 kDa
Gene Summary: This gene may play a role in testicular physiology, spermatogenesis or spermiogenesis. Expression of the encoded protein is highest in the testis and down-regulated in testicular cancer. The gene is localized to the region 19q13.3 among the related RAS viral oncogene homolog (RRAS) and interferon regulatory factor 3 (IRF3) genes, which are both involved in tumorigenesis pathways and progression. [provided by RefSeq, Jul 2008]

Product images:



Circular map for RC206442



Western blot validation of overexpression lysate (Cat# [LY411927]) using anti-DDK antibody (Cat# [TA50011-100]). Left: Cell lysates from untransfected HEK293T cells; Right: Cell lysates from HEK293T cells transfected with RC206442 using transfection reagent MegaTran 2.0 (Cat# [TT210002]).