

Product datasheet for **RC206437**

MX2 (NM_002463) Human Tagged ORF Clone

Product data:

Product Type:	Expression Plasmids
Product Name:	MX2 (NM_002463) Human Tagged ORF Clone
Tag:	Myc-DDK
Symbol:	MX2
Synonyms:	MXB
Mammalian Cell Selection:	Neomycin
Vector:	pCMV6-Entry (PS100001)
E. coli Selection:	Kanamycin (25 ug/mL)



[View online »](#)

**ORF Nucleotide
Sequence:**

>RC206437 ORF sequence
 Red=Cloning site Blue=ORF Green=Tags(s)

TTTTGTAATACGACTCACTATAGGGCGGCCGGGAATTCGTCGACTGGATCCGGTACCGAGGAGATCTGCC
 GCC**CGCATCGCC**

ATGTCTAAGGCCACAAGCCTTGCCCTACCGGAGGAGAAGTCAATTTTCTTCTCGAAAATACCTGAAAA
 AAGAAATGAATTCCTTCCAGCAACAGCCACCGCCATTCGGCACAGTGCCACCACAAATGATGTTTCCTCC
 AAAGTGGCAGGGGGCAGAGAAGGACGCTGCTTTCCTCGCCAAGGACTTCAACTTTCTCACTTTGAACAAT
 CAGCCACCACCAGGAAACAGGAGCCAACCAAGGGCAATGGGGCCCGAGAACAACCTGTACAGCCAGTACG
 AGCAGAAGGTGCGCCCTGCATTGACCTCATCGACTCCCTGCGGGCTCTGGGTGTGGAGCAGGACCTGGC
 CCTGCCAGCCATCGCCGTATCGGGACCAGAGCTCGGGCAAGAGCTCTGTGCTGGAGGCACTGTCAGGA
 GTCGCGCTTCCCAGAGGCAGCGGAATCGTAACCAAGGTGTCGCTGGTGTGAACTGAAAAAGCAGCCCT
 GTGAGGCATGGGCGGAAGGATCAGCTACCGGAACACCGAGCTAGAGCTTCAGGACCCTGGCCAGGTGGA
 GAAAGAGATACACAAAGCCAGAACGTCATGGCCGGGAATGGCCGGGCATCAGCCATGAGCTCATCAGC
 CTGGAGATCACCTCCCCTGAGGTTCCAGACCTGACCATCATTGACCTTCCCGGCATCACCGAGGTGGCTG
 TGGACAACCAGCCCCGAGACATCGGACTGCAGATCAAGGCTCTCATCAAGAAGTACATCCAGAGGACGA
 GACGATCAACTTGGTGGTGGTTCCTGTAACTGGACATTGCCACCACGGAGGCGCTGAGCATGGCCAT
 GAGGTGGACCCGGAAGGGGACAGGACCATCGGTATCCTGACCAAACAGATCTAATGGACAGGGGCACTG
 AGAAAAGCGTCATGAATGTGGTGCAGAACCTCACGTACCCCTCAAGAAGGGCTACATGATTGTGAAGTG
 CCGGGGCCAGCAGGAGATCACAAACAGGCTGAGCTTGGCAGAGGCAACCAAGAAAGAAATTACATTTT
 CAAACACATCCATATTTAGAGTTCTCCTGGAGGAGGGTTCAGCCACGGTTCCTCCGACTGGCAGAAAGAC
 TTACCCTGAACATCATGCATATCAAAAAATCGCTCCCGTTGTTAGAAGGACAAATAAGGGAGGCCA
 CCAGAAGGCGACCGAGGAGCTGCGGCTTGGGGGCTGACATCCCCAGCCAGGAGGCGACAAGATGTTT
 TTTCTAATTGAGAAAATCAAGATGTTTAAATCAGGACATCGAAAAGTTAGTAGAAGGAGAAGAAGTTGTA
 GGGAGAATGAGACCCGTTTATACAACAAAATCAGAGAGGATTTTAAAAACTGGGTAGGCATACTTGAAC
 TAATACCCAAAAAGTTAAAAATATTATCCACGAAGAAGTTGAAAAATATGAAAAGCAGTATCGAGGCAAG
 GAGCTTCTGGGATTTGTCAACTACAAGACATTTGAGATCATCGTGCATCAGTACATCCAGCAGCTGGTGG
 AGCCCGCCCTTAGCATGCTCCAGAAAGCCATGAAATTTCCAGCAAGCTTTCATTAACGTGGCCAAAAA
 ACATTTTGGCGAATTTTCAACCTTAACCAAACTGTTCCAGACAGATTGAAGACATAAAAGTGAACAC
 ACAGCAAAGGCAGAAAACATGATCCAATTCAGTTCAGAAATGGAGCAGATGGTTTTTTGTCAAGATCAGA
 TTTACAGTGTGTTCTGAAGAAAGTCCGAGAAGAGATTTTAAACCCTCTGGGGACGCCTTCACAGAATAT
 GAAGTTGAACTCTCATTTTCCCAGTAATGAGTCTTCGTTTTCTCCTTTACTGAAATAGGCATCCACCTG
 AATGCCTACTTCTTGAAACCAGCAAACGTCTCGCCAACCAGATCCCATTATAATTCAGTATTTTATGC
 TCCGAGAGAATGGTGACTCCTTGAGAAAGCCATGATGCAGATACTACAGGAAAAAAATCGCTATTCCTG
 GCTGCTCAAGAGCAGAGTGAGACCGCTACCAAGAGAAGAATCCTTAAGGAGAGAATTTACCGGCTCACT
 CAGGCGGACACGCACTCTGTCAATTCTCCAGCAAAGAGATCCAC

ACGCGTACGCGGCCGCTCGAGCAGAACTCATCTCAGAAGAGGATCTGGCAGCAAATGATATCCTGGATT
 ACAAGGATGACGACGATAAGGTTTAA

Protein Sequence: >RC206437 protein sequence
 Red=Cloning site Green=Tags(s)

```
MSKAHKPWYRRRSQFSSRKYLKEMNSFQQPPPFQVPPQMMFPPNWQGAEKDAAFLAKDFNFLTNN
QPPPGNRSQPRAMGPENNLYSQYEQKVRPCIDLIDSLRALGVEQDLALPAIIVIGDQSSGKSSVLEALSG
VALPRGSGIVTRCPLVLKLLKQPCAWAGRISYRNTELELQDPGQVEKEIHKAQNVMMAGNGRGISHELIS
LEITSPEVPLDIIIDLPGITRVAVDNQPRDIGLQIKALIKKYIQRQQTINLVVPCNVDIATTEALSMHAH
EVDPEGDRITIGILTKPDLMDRGTEKSMNVVRNLTYPLKKGMIKCRGQQEITNRLSLAEATKKEITFF
QTHPYFRVLLLEGSATVPRLAERLTTEELIMHIQKSLPLLEGQIREHQKATEELRRCGADIPSQEADKMF
FLIEKIKMFNQDIEKLVGEEVVRENETRLYNKIREDFKNWVGILATNTQKVKNIHHEEVEKYEKQYRGK
ELLGFVNYKTFEIIVHQYIQQQLVEPALSMKAMEIIQQAFINVAKKHFGFEFNLNQTQVSTIEDIKVKH
TAKAENMIQLQFRMEQMVFCQDQIYSVVLKVKREEIFNPLGTPSQNMKLNHSPSSNESSVSSFTEIGIHL
NAYFLETSKRLANQIPFIIQYFMLRENGDSLQKAMMQILQEKNRYSWLLQEQSETATKRRILKERIYRLT
QARHALCQFSSKEIH
```

TRTRPLEQKLISEEDLAANDILDYKDDDDKV

Chromatograms: https://cdn.origene.com/chromatograms/mk6694_d04.zip

Restriction Sites: SgfI-MluI

Cloning Scheme:

Cloning sites used for ORF Shuttling:



* The last codon before the Stop codon of the ORF

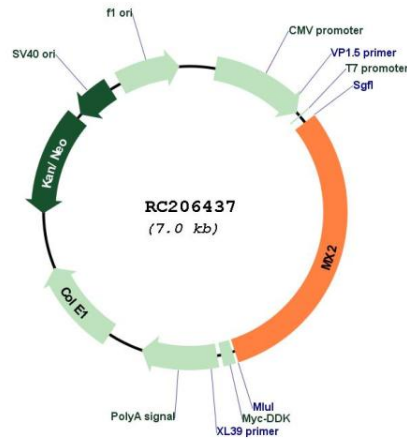
ACCN: NM_002463

ORF Size: 2145 bp

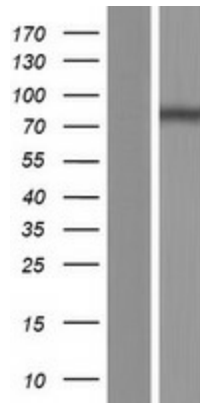
OTI Disclaimer:	<p>Due to the inherent nature of this plasmid, standard methods to replicate additional amounts of DNA in E. coli are highly likely to result in mutations and/or rearrangements. Therefore, OriGene does not guarantee the capability to replicate this plasmid DNA. Additional amounts of DNA can be purchased from OriGene with batch-specific, full-sequence verification at a reduced cost. Please contact our customer care team at custsupport@origene.com or by calling 301.340.3188 option 3 for pricing and delivery.</p> <p>The molecular sequence of this clone aligns with the gene accession number as a point of reference only. However, individual transcript sequences of the same gene can differ through naturally occurring variations (e.g. polymorphisms), each with its own valid existence. This clone is substantially in agreement with the reference, but a complete review of all prevailing variants is recommended prior to use. More info</p>
OTI Annotation:	This clone was engineered to express the complete ORF with an expression tag. Expression varies depending on the nature of the gene.
Components:	The ORF clone is ion-exchange column purified and shipped in a 2D barcoded Matrix tube containing 10ug of transfection-ready, dried plasmid DNA (reconstitute with 100 ul of water).
Reconstitution Method:	<ol style="list-style-type: none"> 1. Centrifuge at 5,000xg for 5min. 2. Carefully open the tube and add 100ul of sterile water to dissolve the DNA. 3. Close the tube and incubate for 10 minutes at room temperature. 4. Briefly vortex the tube and then do a quick spin (less than 5000xg) to concentrate the liquid at the bottom. 5. Store the suspended plasmid at -20°C. The DNA is stable for at least one year from date of shipping when stored at -20°C.
Note:	Plasmids are not sterile. For experiments where strict sterility is required, filtration with 0.22um filter is required.
RefSeq:	NM_002463.2
RefSeq Size:	2961 bp
RefSeq ORF:	2148 bp
Locus ID:	4600
UniProt ID:	P20592
Cytogenetics:	21q22.3
Domains:	dynamain_2, dynamain, GED
Protein Families:	Druggable Genome
MW:	82.1 kDa

Gene Summary:

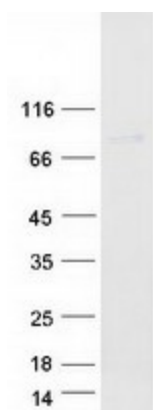
The protein encoded by this gene has a nuclear and a cytoplasmic form and is a member of both the dynamin family and the family of large GTPases. The nuclear form is localized in a granular pattern in the heterochromatin region beneath the nuclear envelope. A nuclear localization signal (NLS) is present at the amino terminal end of the nuclear form but is lacking in the cytoplasmic form due to use of an alternate translation start codon. This protein is upregulated by interferon-alpha but does not contain the antiviral activity of a similar myxovirus resistance protein 1. [provided by RefSeq, Jul 2008]

Product images:


Circular map for RC206437



Western blot validation of overexpression lysate (Cat# [LY419297]) using anti-DDK antibody (Cat# [TA50011-100]). Left: Cell lysates from untransfected HEK293T cells; Right: Cell lysates from HEK293T cells transfected with RC206437 using transfection reagent MegaTran 2.0 (Cat# [TT210002]).



Coomassie blue staining of purified MX2 protein (Cat# [TP306437]). The protein was produced from HEK293T cells transfected with MX2 cDNA clone (Cat# RC206437) using MegaTran 2.0 (Cat# [TT210002]).