

Product datasheet for **RC206435**

Alpha 2 Antiplasmin (SERPINF2) (NM_000934) Human Tagged ORF Clone

Product data:

Product Type:	Expression Plasmids
Product Name:	Alpha 2 Antiplasmin (SERPINF2) (NM_000934) Human Tagged ORF Clone
Tag:	Myc-DDK
Symbol:	Alpha 2 Antiplasmin
Synonyms:	A2AP; AAP; ALPHA-2-PI; alpha2AP; API; PLI
Mammalian Cell Selection:	Neomycin
Vector:	pCMV6-Entry (PS100001)
E. coli Selection:	Kanamycin (25 ug/mL)



[View online »](#)

ORF Nucleotide Sequence:

>RC206435 ORF sequence
 Red=Cloning site Blue=ORF Green=Tags(s)

TTTTGTAATACGACTCACTATAGGGCGGCCGGAATTCGTCGACTGGATCCGGTACCGAGGAGATCTGCC
 GCC**CGGATCGCC**

ATGGTGTCTGCTCTGGGGCTCCTGGTGCTCAGCTGGTCTGCCTGCAAGGCCCTGCTCCGTGTTCTCCC
 CTGTGAGCGCCATGGAGCCCTTGGGCGGCAGCTAACTAGCGGGCCGAACAGGAGCAGGTGCCCACT
 TACCCTCCTCAAGTTGGGCAACAGGAGCTGGTGGCCAGACTGCCCTGAAGAGTCCCCAGGAGTCTGC
 AGCAGAGACCCACCCAGAGCAGACCCACAGGCTGGCCCGGCCATGATGGCCTTCACTGCCGACCTGT
 TCTCCCTGGTGGCTCAAACGTCCACCTGCCCAACCTCATCTGTCAACCCTGAGTGTGGCCCTGGCGCT
 GTCTCACCTGGCACTAGGTGCTCAGAACCACACGTTGCAGAGGCTGCAACAGGTGCTGCACGCAGGCTCA
 GGGCCCTGCCTCCCCATCTGCTGAGCCGCTCTGCCAGGACCTGGGCCCGGCCGCTTCCGACTGGCTG
 CCAGGATGTACCTGCAGAAAGGATTTCCATCAAAGAAGATTTCTGGAACAATCCGAACAGCTATTTGG
 GGCAAAGCCCGTGAGCCTGACGGGAAAGCAGGAAGATGACCTGGCAAACATCAACCAATGGGTGAAGGAG
 GCCACGGAGGGGAAGATTACGAATTCTCTCTGGGCTGCCGGAAGACACCGTGTGCTTCTCTCAACG
 CCATCCACTTCCAGGGTTTCTGGAGGAACAAGTTTGACCCGAGCCTTACCCAGAGAGACTCCTTCCACCT
 GGACGAGCAGTTCACGGTGCCCGTGAAATGATGCAGGCCCGCACGTACCCGCTGCGCTGGTTCTTGCTG
 GAGCAGCTGAGATCCAGGTGGCTCATTCCCCTTAAAGAACAACATGAGCTTTGTGGTCTTGTACCCA
 CCCACTTTGAATGGAACGTGTCCAGGACTGGCCAACCTGAGTTGGGACACCCTGCACCCACCTCTGGT
 GTGGGAGAGGCCACCAAGGTCCGGTGCCTAAGCTGTATCTGAAACACCAAATGGACCTGGTGGCCACC
 CTCAGCCAGCTGGGCTGCAGGAGTTGTTCCAGGCCAGACCTGCGTGGGATCTCCGAGCAGAGCCTGG
 TGGTGTCCGGCGTGAGCATCAGTCCACCTGGAGCTCAGCGAGGTGCGGCTGGAGGCGGCCGCGGCCAC
 CAGCATGGCCATGTCCCGCATGTCCTGTCTCTCAGCGTGAACCGCCCTTCTCTTCTTCTTCTTCTTCTT
 GAGGACACCACAGGCCTTCCCCTCTTCTGGGAGCGTGAAGAACCCCAACCCAGTGCACCGCGGAGC
 TCAAGGAACAGCAGGATCCCCGGCAACAAGGACTTCTCCAGAGCCTGAAAGGCTTCCCCCGGGAGA
 CAAGCTTTTCGGCCCTGACTTAAAACCTGTGCCCCCATGGAGGAGGATTACCCCGAGTTTGGCAGCCCC
 AAG

ACGCGTACGCGGCCGCTCGAGCAGAACTCATCTCAGAAGAGGATCTGGCAGCAAATGATATCTGGATT
 ACAAGGATGACGACGATAAGGTTTAA

Protein Sequence:

>RC206435 protein sequence
 Red=Cloning site Green=Tags(s)

MVLLWGLLVLSWSCLQGPCSVFSPVSAMEPLGRQLTSGPNQEQVSPLTLLKLGNEPQGGQTALKSPPGVC
 SRDPTPEQTHRLARAMMAFTADLFSLVAQTSTCPNLILSPLSVALALSHLALGAQNHTLQRLQQVLHAGS
 GPCLPHLLSRLCQDLGPGAFRLAARMYLQKGFPIKEDFLEQSEQLFGAKPVSLTGKQEDDLANINQWVKE
 ATEGKIQEFLSGLPEDTVLLLLNAIHFQGFWRNKFDPSTLQQRDSFHLDEQFTVPVEMMQARTYPLRWFL
 EQPEIQVAHFPPKNNMSFVVLVPTHFEWNVSVQLANLSWDTLHPPLVWERPTKVRLPKLYLKHQMDLVAT
 LSQGLQELFQAPDLRGISEQSLVVSQVHQSTLELSEVGVAAAATSIAMSRMSLSSFVNRPFLLFFIF
 EDTTGLPLFVGSVRNPNPSAPRELKEQQDSPGNKDFLQSLKGFPRGDKLFGPDLKLVPPMEEDYPQFGSP
 K

TRTRPLEQKLISEEDLAANDILDYKDDDDKV

Chromatograms:

https://cdn.origene.com/chromatograms/mk6832_a08.zip

Restriction Sites:

Sgfl-MluI

Cloning Scheme:


ACCN: NM_000934

ORF Size: 1473 bp

OTI Disclaimer: The molecular sequence of this clone aligns with the gene accession number as a point of reference only. However, individual transcript sequences of the same gene can differ through naturally occurring variations (e.g. polymorphisms), each with its own valid existence. This clone is substantially in agreement with the reference, but a complete review of all prevailing variants is recommended prior to use. [More info](#)

OTI Annotation: This clone was engineered to express the complete ORF with an expression tag. Expression varies depending on the nature of the gene.

Components: The ORF clone is ion-exchange column purified and shipped in a 2D barcoded Matrix tube containing 10ug of transfection-ready, dried plasmid DNA (reconstitute with 100 ul of water).

Reconstitution Method:

1. Centrifuge at 5,000xg for 5min.
2. Carefully open the tube and add 100ul of sterile water to dissolve the DNA.
3. Close the tube and incubate for 10 minutes at room temperature.
4. Briefly vortex the tube and then do a quick spin (less than 5000xg) to concentrate the liquid at the bottom.
5. Store the suspended plasmid at -20°C. The DNA is stable for at least one year from date of shipping when stored at -20°C.

RefSeq: [NM_000934.4](#)

RefSeq Size: 2284 bp

RefSeq ORF: 1476 bp

Locus ID: 5345

UniProt ID: [P08697](#)

Cytogenetics: 17p13.3

Domains: SERPIN

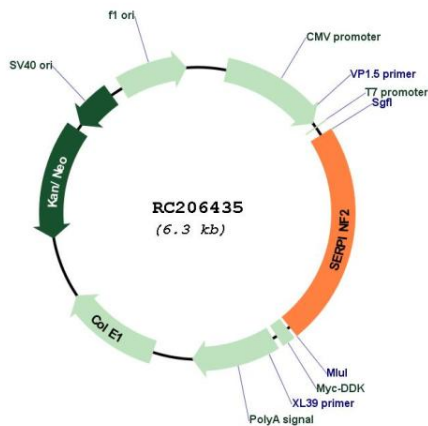
Protein Families: Druggable Genome, Secreted Protein

Protein Pathways: Complement and coagulation cascades

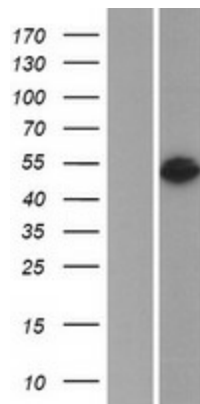
MW: 54.6 kDa

Gene Summary: This gene encodes a member of the serpin family of serine protease inhibitors. The protein is a major inhibitor of plasmin, which degrades fibrin and various other proteins. Consequently, the proper function of this gene has a major role in regulating the blood clotting pathway. Mutations in this gene result in alpha-2-plasmin inhibitor deficiency, which is characterized by severe hemorrhagic diathesis. Multiple transcript variants encoding different isoforms have been found for this gene. [provided by RefSeq, Sep 2009]

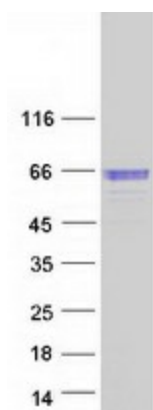
Product images:



Circular map for RC206435



Western blot validation of overexpression lysate (Cat# [LY424449]) using anti-DDK antibody (Cat# [TA50011-100]). Left: Cell lysates from untransfected HEK293T cells; Right: Cell lysates from HEK293T cells transfected with RC206435 using transfection reagent MegaTran 2.0 (Cat# [TT210002]).



Coomassie blue staining of purified SERPINF2 protein (Cat# [TP306435]). The protein was produced from HEK293T cells transfected with SERPINF2 cDNA clone (Cat# RC206435) using MegaTran 2.0 (Cat# [TT210002]).