

## Product datasheet for **RC206434**

### CEACAM5 (NM\_004363) Human Tagged ORF Clone

#### Product data:

Product Type:	Expression Plasmids
Product Name:	CEACAM5 (NM_004363) Human Tagged ORF Clone
Tag:	Myc-DDK
Symbol:	CEACAM5
Synonyms:	CD66e; CEA
Mammalian Cell Selection:	Neomycin
Vector:	pCMV6-Entry (PS100001)
E. coli Selection:	Kanamycin (25 ug/mL)



[View online »](#)

**ORF Nucleotide  
Sequence:**

>RC206434 representing NM\_004363  
 Red=Cloning site Blue=ORF Green=Tags(s)

TTTTGTAATACGACTCACTATAGGGCGGCCGGGAATTCGTCGACTGGATCCGGTACCGAGGAGATCTGCC  
 GCC**CGGATCGCC**

ATGGAGTCTCCCTCGGCCCTCCCACAGATGGTGCATCCCTGGCAGAGGCTCCTGCTCACAGCCTCAC  
 TTCTAACCTTCTGGAACCGCCACCACCTGCCAAGCTCACTATTGAATCCACGCCGTTCAATGTCGCAGA  
 GGGGAAGGAGGTGCTTCTACTTGTCCACAATCTGCCCCAGCATCTTTTGGCTACAGCTGGTACAAAGGT  
 GAAAGAGTGGATGGCAACCGTCAAATTATAGGATATGTAATAGGAACTCAACAAGCTACCCAGGGCCCG  
 CATACAGTGGTCGAGAGATAATATACCCAATGCATCCCTGCTGATCCAGAACATCATCCAGAATGACAC  
 AGGATTCTACACCCTACACGTCATAAAGTCAGATCTTGTGAATGAAGAAGCAACTGGCCAGTTCGGGTA  
 TACCCGGAGCTGCCAAGCCCTCCATCTCCAGCAACAACCTCAAACCCGTGGAGGACAAGGATGCTGTGG  
 CCTTCACTGTGAACCTGAGACTCAGGACGCAACCTACCTGTGGTGGTAAACAATCAGAGCCTCCCGGT  
 CAGTCCCAGGCTGCAGCTGTCCAATGGCAACAGGACCCTCACTCTATTCAATGTACAAGAAATGACACA  
 GCAAGCTACAAATGTGAAACCCAGAACCAGTGAGTGCCAGGCGCAGTGATTCACTCATCTGAATGTCC  
 TCTATGGCCCGGATGCCCCACCATTTCCTCTAAACACATCTTACAGATCAGGGGAAAATCTGAACCT  
 CTCTGCCACGCAGCCTTAACCCACCTGCACAGTACTCTTGGTTGTCAATGGGACTTTCAGCAATCC  
 ACCCAAGAGCTCTTTATCCCAACATCACTGTGAATAATAGTGGATCCTATACGTGCCAAGCCATAACT  
 CAGACTGGCCTCAATAGGACCACAGTCACGACGATCACAGTCTATGCAGAGCCACCAAAACCTTCAT  
 CACCAGCAACAACCTCAACCCCGTGGAGGATGAGGATGCTGTAGCCTAACCTGTGAACCTGAGATTGAG  
 AACACAACCTACCTGTGGTGGTAAATAATCAGAGCCTCCCGGTCACTCCAGGCTGCAGCTGTCCAATG  
 ACAACAGGACCTCACTACTCAGTGTACAAGGAATGATGTAGGACCCTATGAGTGTGGAATCCAGAA  
 CAAATTAAGTGTGACCACAGCGACCCAGTCATCCTGAATGTCCCTATGGCCAGACGACCCACCATT  
 TCCCCCTCATACACCTATTACCGTCCAGGGGTGAACCTCAGCCTCTCTGCCATGCAGCCTTAACCCAC  
 CTGCACAGTATTCTTGGCTGATTGATGGGAACATCCAGCAACACACACAAGAGCTCTTTATCTCCAACAT  
 CACTGAGAAGAACAGCGGACTCTATACCTGCCAGGCCAATAACTCAGCCAGTGGCCACAGCAGGACTACA  
 GTCAAGACAATCACAGTCTCTGCGGAGCTGCCAAGCCCTCCATCTCCAGCAACAACCTCAAACCCGTGG  
 AGGACAAGGATGCTGTGGCCTTACCTGTGAACCTGAGGCTCAGAACACAACCTACCTGTGGTGGTAAA  
 TGGTCAGAGCCTCCAGTCAGTCCAGGCTGCAGCTGTCCAATGGCAACAGGACCCTCACTCTATTCAAT  
 GTCACAAGAAATGACGCAAGAGCCTATGTATGTGGAATCCAGAACTCAGTGAAGTCAACCCGAGTGACC  
 CAGTACCCTGGATGTCCTCTATGGGCCGACACCCCATCATTTCCCCCAGACTCGTCTACCTTTC  
 GGGAGCGAACCTCAACCTCTCTGCCACTCGGCCTCTAACCCATCCCCGAGTATTCTTGGCGTATCAAT  
 GGGATACCGCAGCAACACACACAAGTTCTTTATCGCAAAATCACGCCAAATAATAACGGGACCTATG  
 CCTGTTTTGTCTCAACTGGCTACTGGCCGCAATAATCCATAGTCAAGAGCATCACAGTCTCTGCATC  
 TGGAACTTCTCTGGTCTCTCAGCTGGGCCACTGTCCGCATCATGATTGGAGTCTGTTGGGGTTGCT  
 CTGATA

**ACGCGT**ACGCGGCCGCTCGAGCAGAACTCATCTCAGAAGAGGATCTGGCAGCAAATGATATCCTGGATT  
 ACAAGGATGACGACGATAAGGTTTAA

**Protein Sequence:** >RC206434 representing NM\_004363  
Red=Cloning site Green=Tags(s)

MESPSAPPHRWCI PWQRLLLTASLLTFWNPPTAKLTIESTPFNVAEGKEVLLL VHNLPQH LFGYSWYKG  
 ERVDGNRQIIGYVIGTQQATPGPAYSGREIIYPNASLLIQNIIQNDFYTLHVIKSDLVNEEATGQFRV  
 YPELKPSSISSNNSKPVEDKDAVAFTCEPETQDATYLWWVNNQSLPVSPRLQLSNGNRTLTLFNVTRNDT  
 ASYKCEQNPVSARRSDSVILNVLYGPDAPTISPLNTSYRSGENLNL SCHAASNPPAQYSWFVNGTFQQS  
 TQELFIPNITVNNSGSYTCQAHNSDTGLNRTTITVYAEPPKPFITSNNSNPVEDEAVALTCEPEIQ  
 NTTYLWWVNNQSLPVSPRLQLSNDNRTL TLLSVTRNDVGPYECGIQNKLSVDHSDPVILNVLYGPDPTI  
 SPSYTYRPGVNL SLSCHAASNPPAQYSWLIDGNIQQHTQELFISNITEKNSGLYTCQANNSASGHSRTT  
 VKTITVSAELPKPSSISSNNSKPVEDKDAVAFTCEPEAQNTTYLWWVNGQSLPVSPRLQLSNGNRTLTLFN  
 VTRNDARAYVCGIQNSVSANRSDPVTL DVLYGPDPTIISPDPSSYLSGANLNL SCHAASNPPSQYSWRIN  
 GIPOQHTQVLFIAKITPNNNGTYACFVSNLATGRNNSIVKSITVSASGTSPLSAGATVGMIGVLVGLV  
 LI

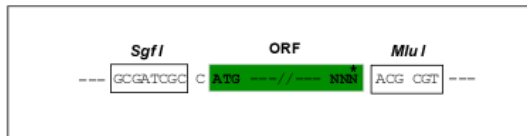
TRTRPLEQKLISEEDLAANDILDYKDDDDKV

**Chromatograms:** [https://cdn.origene.com/chromatograms/mk8120\\_c01.zip](https://cdn.origene.com/chromatograms/mk8120_c01.zip)

**Restriction Sites:** Sgfl-MluI

**Cloning Scheme:**

Cloning sites used for ORF Shuttling:



**ACCN:** NM\_004363

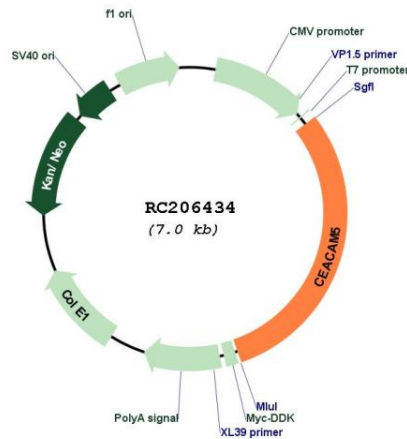
**ORF Size:** 2106 bp

**OTI Disclaimer:** The molecular sequence of this clone aligns with the gene accession number as a point of reference only. However, individual transcript sequences of the same gene can differ through naturally occurring variations (e.g. polymorphisms), each with its own valid existence. This clone is substantially in agreement with the reference, but a complete review of all prevailing variants is recommended prior to use. [More info](#)

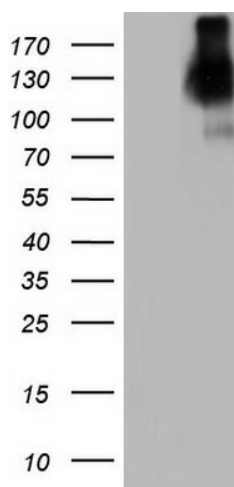
**OTI Annotation:** This clone was engineered to express the complete ORF with an expression tag. Expression varies depending on the nature of the gene.

- Components:** The ORF clone is ion-exchange column purified and shipped in a 2D barcoded Matrix tube containing 10ug of transfection-ready, dried plasmid DNA (reconstitute with 100 ul of water).
- Reconstitution Method:**
1. Centrifuge at 5,000xg for 5min.
  2. Carefully open the tube and add 100ul of sterile water to dissolve the DNA.
  3. Close the tube and incubate for 10 minutes at room temperature.
  4. Briefly vortex the tube and then do a quick spin (less than 5000xg) to concentrate the liquid at the bottom.
  5. Store the suspended plasmid at -20°C. The DNA is stable for at least one year from date of shipping when stored at -20°C.
- RefSeq:** [NM\\_004363.3](#)
- RefSeq Size:** 3516 bp
- RefSeq ORF:** 2109 bp
- Locus ID:** 1048
- UniProt ID:** [P06731](#)
- Cytogenetics:** 19q13.2
- MW:** 76.79 kDa
- Gene Summary:** This gene encodes a cell surface glycoprotein that represents the founding member of the carcinoembryonic antigen (CEA) family of proteins. The encoded protein is used as a clinical biomarker for gastrointestinal cancers and may promote tumor development through its role as a cell adhesion molecule. Additionally, the encoded protein may regulate differentiation, apoptosis, and cell polarity. This gene is present in a CEA family gene cluster on chromosome 19. Alternative splicing results in multiple transcript variants. [provided by RefSeq, Jul 2015]

**Product images:**



Circular map for RC206434



HEK293T cells were transfected with the pCMV6-ENTRY control (Cat# [PS100001], Left lane) or pCMV6-ENTRY CEACAM5 (Cat# RC206434, Right lane) cDNA for 48 hrs and lysed. Equivalent amounts of cell lysates (5 ug per lane) were separated by SDS-PAGE and immunoblotted with anti-CEACAM5(Cat# [TA803456]).