

Product datasheet for **RC206430**

FOXI1 (NM_144769) Human Tagged ORF Clone

Product data:

Product Type:	Expression Plasmids
Product Name:	FOXI1 (NM_144769) Human Tagged ORF Clone
Tag:	Myc-DDK
Symbol:	FOXI1
Synonyms:	FKH10; FKHL10; FREAC-6; FREAC6; HFH-3; HFH3
Mammalian Cell Selection:	Neomycin
Vector:	pCMV6-Entry (PS100001)
E. coli Selection:	Kanamycin (25 ug/mL)
ORF Nucleotide Sequence:	>RC206430 ORF sequence Red=Cloning site Blue=ORF Green=Tags(s)

TTTTGTAATACGACTCACTATAGGGCGCCGGGAATTCGTCGACTGGATCCGGTACCGAGGAGATCTGCC
GCC**CGATCGCC**

ATGAGTCCTTCGACCTGCCGGCGCCCTCCCCACCTCGCTGCAGCCCCAGTTCCCAGCATCGGCCAGG
AGCCCCCGAGATGAACCTCTACTATGAGAACTTCTCCACCCACAGGGCGTGCCAGCCCTCAGCGGCC
CTCCTTCGAGGGGGCGGCGAGTATGGGGCCACCCCCAACCCCTACCTCTGGTTCAACGGGCCACCATG
ACCCCGCCACCCTACCTGCCGGCCCCAACGCCAGCCCCCTTCTGCCCCAGGCCATGGAGTGCAGAGGC
CGCTGCTGCCAGCGTGTGGGGCTTGGGGGAGCGACCTGGGCTGGCTGCCCATCCCCTCGCAGGAGGA
GCTGATGAAGCTGGTGGCGCCACCCTATTCTACTCGGCTCTCATCGCCATGGCCATCCACGGGGCACCC
GACAAGCGCCTCACTCTCAGCCAGATCTACCAAGTACGTGGCCGACAACCTCCCCTTCTACAACAAGAGCA
AGGCCGGCTGGCAGAAGTCCATCCGCCACAACCTGTCGCTCAACGACTGCTTCAAGAAGGTGCCCGCGA
CGAGGACGACCCGGCCTATGTGAGCGGGGGGAGCCCCACGAGCCACCCCTTGGTCAACACAGGACTGAGC
CCTGAGCCAGTGAAGACGGGGCAGAAGTCACTGACCTTCAACTCCTTCTCCCCGCTCACCAACTCA
GCAACCACAGCGGTGGGGTGACTGGGCGAACCCATGCCACCAACATGCTCAGCTACGGAGGATCTGT
GCTCAGCCAATTCAGCCCTCACTTCTACAACAGTGTCAACACCAGTGGTGTCTCTACCCAGGGAGGGC
ACCGAGGTC

ACGCGTACGCGGGCGCTCGAGCAGAAACTCATCTCAGAAGAGGATCTGGCAGCAAATGATATCCTGGATT
ACAAGGATGACGACGATAAGGTTAA



[View online »](#)

Protein Sequence: >RC206430 protein sequence
Red=Cloning site Green=Tags(s)

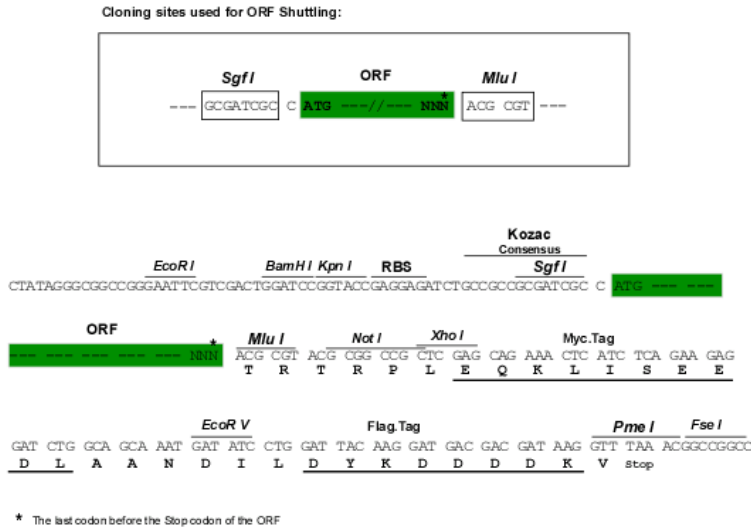
MSSF~~D~~L~~P~~A~~P~~S~~P~~P~~R~~C~~S~~P~~Q~~F~~P~~S~~I~~G~~Q~~E~~P~~P~~E~~M~~N~~L~~Y~~E~~N~~F~~F~~H~~P~~Q~~G~~V~~P~~S~~P~~Q~~R~~P~~S~~F~~E~~G~~G~~E~~Y~~G~~A~~T~~P~~N~~P~~Y~~L~~W~~F~~N~~G~~P~~T~~M
 T~~P~~P~~P~~Y~~L~~P~~G~~P~~N~~A~~S~~P~~F~~L~~P~~Q~~A~~Y~~G~~V~~Q~~R~~P~~L~~L~~P~~S~~V~~S~~G~~L~~G~~G~~S~~D~~L~~G~~W~~L~~P~~I~~P~~S~~Q~~E~~E~~L~~M~~K~~L~~V~~R~~P~~P~~Y~~S~~S~~A~~L~~I~~A~~M~~A~~I~~H~~G~~A~~P
 D~~K~~R~~L~~T~~L~~S~~Q~~I~~Y~~Q~~Y~~V~~A~~D~~N~~F~~F~~Y~~N~~K~~S~~K~~A~~G~~W~~Q~~N~~S~~I~~R~~H~~N~~L~~S~~L~~N~~D~~C~~F~~K~~K~~V~~P~~R~~E~~D~~D~~P~~A~~Y~~V~~S~~G~~G~~S~~P~~T~~S~~H~~P~~L~~V~~T~~P~~G~~L~~S~~
 P~~E~~P~~S~~D~~K~~T~~G~~Q~~N~~S~~L~~T~~F~~N~~S~~F~~S~~P~~L~~T~~N~~L~~S~~N~~H~~S~~G~~G~~D~~W~~A~~N~~P~~M~~P~~T~~N~~M~~L~~S~~Y~~G~~G~~S~~V~~L~~S~~Q~~F~~S~~P~~H~~F~~Y~~N~~S~~V~~N~~T~~S~~G~~V~~L~~Y~~P~~R~~E~~G
 T~~E~~V

TRTRPLEQKLISEEDLAANDILDYKDDDDKV

Chromatograms: https://cdn.origene.com/chromatograms/mk6330_h06.zip

Restriction Sites: SgfI-MluI

Cloning Scheme:



ACCN: NM_144769

ORF Size: 849 bp

OTI Disclaimer: The molecular sequence of this clone aligns with the gene accession number as a point of reference only. However, individual transcript sequences of the same gene can differ through naturally occurring variations (e.g. polymorphisms), each with its own valid existence. This clone is substantially in agreement with the reference, but a complete review of all prevailing variants is recommended prior to use. [More info](#)

OTI Annotation: This clone was engineered to express the complete ORF with an expression tag. Expression varies depending on the nature of the gene.

Components: The ORF clone is ion-exchange column purified and shipped in a 2D barcoded Matrix tube containing 10ug of transfection-ready, dried plasmid DNA (reconstitute with 100 ul of water).

Reconstitution Method:

1. Centrifuge at 5,000xg for 5min.
2. Carefully open the tube and add 100ul of sterile water to dissolve the DNA.
3. Close the tube and incubate for 10 minutes at room temperature.
4. Briefly vortex the tube and then do a quick spin (less than 5000xg) to concentrate the liquid at the bottom.
5. Store the suspended plasmid at -20°C. The DNA is stable for at least one year from date of shipping when stored at -20°C.

RefSeq: [NM_144769.1](#), [NP_658982.1](#)

RefSeq Size: 2011 bp

RefSeq ORF: 852 bp

Locus ID: 2299

UniProt ID: [Q12951](#)

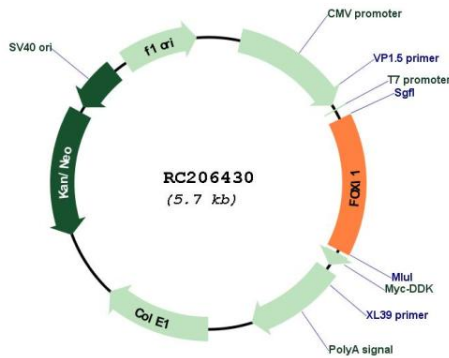
Cytogenetics: 5q35.1

Protein Families: Transcription Factors

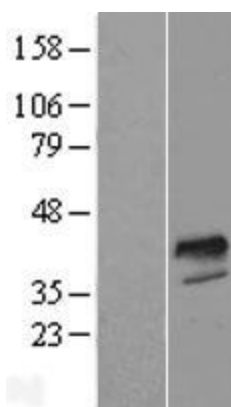
MW: 30.8 kDa

Gene Summary: This gene belongs to the forkhead family of transcription factors, which is characterized by a distinct forkhead domain. This gene may play an important role in the development of the cochlea and vestibulum, as well as in embryogenesis. The encoded protein has been found to be required for the transcription of four subunits of a proton pump found in the inner ear, the kidney, and the epididymis. Mutations in this gene have been associated with deafness, autosomal recessive 4. [provided by RefSeq, Jan 2017]

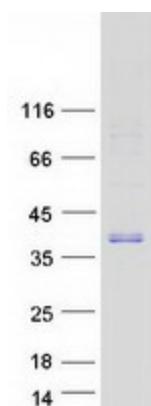
Product images:



Circular map for RC206430



Western blot validation of overexpression lysate (Cat# [LY408109]) using anti-DDK antibody (Cat# [TA50011-100]). Left: Cell lysates from untransfected HEK293T cells; Right: Cell lysates from HEK293T cells transfected with RC206430 using transfection reagent MegaTran 2.0 (Cat# [TT210002]).



Coomassie blue staining of purified FOX11 protein (Cat# [TP306430]). The protein was produced from HEK293T cells transfected with FOX11 cDNA clone (Cat# RC206430) using MegaTran 2.0 (Cat# [TT210002]).