

Product datasheet for **RC206427**

CCDC71 (NM_022903) Human Tagged ORF Clone

Product data:

Product Type:	Expression Plasmids
Product Name:	CCDC71 (NM_022903) Human Tagged ORF Clone
Tag:	Myc-DDK
Symbol:	CCDC71
Mammalian Cell Selection:	Neomycin
Vector:	pCMV6-Entry (PS100001)
E. coli Selection:	Kanamycin (25 ug/mL)



[View online »](#)

ORF Nucleotide Sequence:

>RC206427 ORF sequence
 Red=Cloning site Blue=ORF Green=Tags(s)

TTTTGTAATACGACTCACTATAGGGCGGCCGGGAATTCGTCGACTGGATCCGGTACCGAGGAGATCTGCC
 GCC**CGGATCGCC**

ATGAGTGTGGTGGTTTCAGCATGTGGAGGAAAAAGCTGTGCACTCCTGGTCGCGCATCTCCACGGCAGGGA
 AGAAGGCCCTGGAAGAGGCACTGCTTGTCTTTAACCCAATGAGCCAGGATCTCAGTGCCACAGAGGCCCA
 GCTTGTGGCCTTCTGCAGGGCCTGCGAGATGATGGCTTCCAACCTACCATCCTGCGCAGTGGTGTATGTC
 TATGGCTATAGTTCATGCACAGCTAATCCCCAAGCCAGACGAACTGCAAGCTCGTGCCCTAACCCAA
 CTGCCACATCACCTCCAGCCAGTCTCCCCGAAGTCCATGCGGTTGCCTGCAGGTGGGCCACACTGCT
 TCCCATGCCGCTATCTGGCAGACTGGCCAAAGCATCCACACCAGCCCTTGCCAAGCATGCTACCACCAAC
 CTGCTGCTGAGCTCTCTGAAGCAATCAAGTGCCAGCCATGCCCGGGTGCAGCAGTGGGCTTCCCCACCC
 ACCTTTATCCAGGTGTCTACCTGCCATGCGGCTCTCTGTGTCCTTGAGGCCCTGGTTCACCTAAGAC
 TCCCATGCCCTGCTTGGGTGCCAAGCACAAGGCACAGTCACTGCAGCTCTCACTTGACAGACTCTCCTCTG
 AAAGTCCGAAAAAGTTCAGGGAAGGGTCCGGGGAAACCCTCGGCCAAAGCTCCCAGAAAAACCACAAGCA
 AGGGCCCCAAGTGTCTGACTCGCAAAGGCCCTGGGGCTGGACCCGACGAGGCTCTGGGCACCAGAGCAA
 AACCAACAGAGCCACTGGGTCCCCAGTGTCCGGCAATGAAAGGGGGCTCTGCCCTGGGCACAAAAACA
 GCCCAGGCCAAGGTAGCTCGAACACTGGCCAAAGTCTCGTGCCCAAGCCAAGGTGGCTCGAACACAGG
 CCAAGGCTGCTAAGGCCCGGGCCAAGGCCAAGGCAGCACTGGTCAAGGCTAAGGCCAAAGCTAAGGCAGC
 ACAGGTCAAGGCCAAGGCCAAAGTATGGCAGCACGGGCCAAGGCCAAGGCTAAGGCCAAGGCAGTACGG
 GCCAAGGCCAAGGTGGCTCGGACCCAGCCAGGGGCAGAGGCAGGCCAAGGGATCTGCTAAGGCCAGAA
 CTACAAGGAAGGGCCAGAAAAACCCGCTGAGACTGTTGGCAGAAAGGAAAAGGGCTGAGGAGGCAAA
 AGATCTTCTCCCAAGAAGAGAACAACGGCTTGGGCCCGATCTCCTAAGGCATGGCTAGGGCCTGGAACA
 GCAAAGCTGCTGAAGTTCGTGCCATAAAGGTAGATAGGCGTCTCGGATGATGAGGTGCGGCAGCGGG
 CTCAGCGGATCCTCCGCGTGAACCTGTACCTGTAATACGGCTCCAGCCATTGCTGCCATATTCAGCAGT
 C

ACGCGTACGCGGCCGCTCGAGCAGAAACTCATCTCAGAAGAGGATCTGGCAGCAAATGATATCCTGGATT
 ACAAGGATGACGACGATAAGGTTTAA

Protein Sequence:

>RC206427 protein sequence
 Red=Cloning site Green=Tags(s)

MSVVVQHVEEKAVHSWSRISTAGKKALEEALLVFNPMQDL SATEAQLVAF LQGLRDDGFQPTILRSGDV
 YGYSSCTANPPSQT KLQARAPNPTATSPPASAPRTAMRLPAGRATLLP MPLSGRLAKASTPALAKHATTN
 LLLSSLKQSSASHARGAAVGFPHLYPGVYPAMRLSVVLEALVPLKTPMPCLGAKHKAQSLQLSLADSPL
 KLRKSSSGKPGNPRPKAPRKTTSKGPCKLTRKPGAGPRRGSGHQSKTNRATGSPSVRRMKGGSALGKT
 AQAKVARTLAKAARAQAKVARTQAKAAKARAKAKAALVKAKAKAKAAQVKAKAKVMAARAKAKAKAVR
 AKAKVARTQPRGRPKGSAKARTTRKGQKNRPETVQQRKRAEEAKDLPPKKRTRLGPRSPKAWLPGPT
 AKLLKFRAIKVDRRSSDDEVQRQAQRILRVNLSPIRLQPLLPYSAV

TRTRPLEQKLISEEDLAANDILDYKDDDDKV

Chromatograms:

https://cdn.origene.com/chromatograms/mk6328_a06.zip

Restriction Sites:

SgfI-MluI

Cloning Scheme:


ACCN: NM_022903

ORF Size: 1401 bp

OTI Disclaimer: The molecular sequence of this clone aligns with the gene accession number as a point of reference only. However, individual transcript sequences of the same gene can differ through naturally occurring variations (e.g. polymorphisms), each with its own valid existence. This clone is substantially in agreement with the reference, but a complete review of all prevailing variants is recommended prior to use. [More info](#)

OTI Annotation: This clone was engineered to express the complete ORF with an expression tag. Expression varies depending on the nature of the gene.

Components: The ORF clone is ion-exchange column purified and shipped in a 2D barcoded Matrix tube containing 10ug of transfection-ready, dried plasmid DNA (reconstitute with 100 ul of water).

- Reconstitution Method:**
1. Centrifuge at 5,000xg for 5min.
 2. Carefully open the tube and add 100ul of sterile water to dissolve the DNA.
 3. Close the tube and incubate for 10 minutes at room temperature.
 4. Briefly vortex the tube and then do a quick spin (less than 5000xg) to concentrate the liquid at the bottom.
 5. Store the suspended plasmid at -20°C. The DNA is stable for at least one year from date of shipping when stored at -20°C.

RefSeq: [NM_022903.2](#), [NP_075054.2](#)

RefSeq Size: 1851 bp

RefSeq ORF: 1404 bp

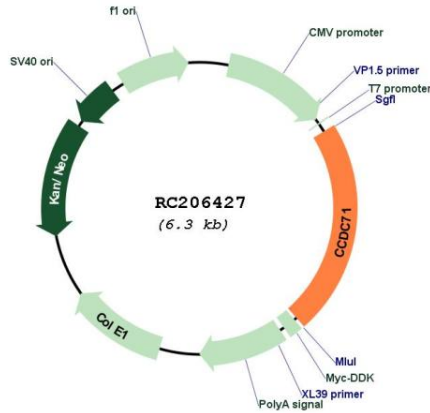
Locus ID: 64925

UniProt ID: [Q8IV32](#)

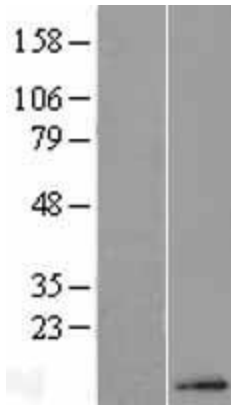
Cytogenetics: 3p21.31

MW: 49.6 kDa

Product images:



Circular map for RC206427



Western blot validation of overexpression lysate (Cat# [LY411476]) using anti-DDK antibody (Cat# [TA50011-100]). Left: Cell lysates from untransfected HEK293T cells; Right: Cell lysates from HEK293T cells transfected with RC206427 using transfection reagent MegaTran 2.0 (Cat# [TT210002]).