

Product datasheet for **RC206425**

PHACTR4 (NM_001048183) Human Tagged ORF Clone

Product data:

Product Type:	Expression Plasmids
Product Name:	PHACTR4 (NM_001048183) Human Tagged ORF Clone
Tag:	Myc-DDK
Symbol:	PHACTR4
Synonyms:	PPP1R124
Mammalian Cell Selection:	Neomycin
Vector:	pCMV6-Entry (PS100001)
E. coli Selection:	Kanamycin (25 ug/mL)



[View online »](#)

ORF Nucleotide
Sequence:

>RC206425 ORF sequence
Red=Cloning site Blue=ORF Green=Tags(s)

TTTTGTAATACGACTCACTATAGGGCGGCCGGAATTCGTCGACTGGATCCGGTACCGAGGAGATCTGCC
GCCGCGATCGCC

ATGGAAGATCCATTTGAGGAAGCAGACCAGCCACTACAGAGCCAGGCATGGTCTTGACAGTGTGGAAG
CAGGAGACACAACACCTCTACCAAAAAGGAAGAGCAAGTTCTCAGGCTTTGGCAAGATCTTCAAGCCCTG
GAAATGGAGGAAAAAAAAAAGTAGTGATAAATTTAAAGAGACTTCAGAAGTTTTAGAACGAAAAATATCT
ATGCGAAAAGCCAAGAGAAGAGCTGGTTAAAAGAGGGTTCTGTTGGAAGACCCTGAGCAAGGTGGTGAAG
ATCCAGGAAAAGCCAAGCGATGCCATGTTAAAGAATGGCCATACCACCCCATAGGGAATGCCAGATCATC
TAGTCCAGTCCAAGTAGAGGAAGAGCCAGTAAGATTAGCAAGTCTTAGGAAAGCTATTCCAGAAGAGGAC
CTAAAGAAACGACTAGGCTCAACTGGAAGCCAGCCTAATTCTGAAGCAGAGTCTGTTCTGAGAATGTAC
CCAAACCACCTTTACTTCTCCAAAAGACCCTTGTCTTCTCATGAAGCAAGTGAAGGGCAAGCAA
GGATGCCACTTCTCTGGCGGCACGGCAAGGTTTCATCATCTCCACCTCCATCACCACAGCACCCGCTGCC
ACCACTGCTGCCACAAGCCTTGCAAAGACTGTTAATCTCTCTGTACCCCTTCCCGAGCACCCAGGACTC
TGCTGTCTCTGCCAGCACTAACTACTGCTACCCCAAGCCTCACTCATATGGTCCCTGCCAAGCA
GCCCCCTATCCCTCCCCCTAAACCAGCTCACAGAAATAGCAACCCCTGTCATTGCTGAACTGTCCCAAGCA
ATAAACAGTGGTACATTGTTATCAAAACCGTCCCCACCCTTACCACCTAAGAGAGGCATTCCATCAACCT
CAGTACCACCTTGGAGTCTGCTGCTGCCATCACCACAAAAACCAAGTATGAAAGAGAGAAGAGCAC
GTGTTCTATGGGCTCGGAACTACTACCAATGATCTCACCTCGCTCTCCGTCACCCCACTGCCTACTCAT
ATACCTCCAGAGCCTCCACGCACCCCTCATTCCCTGCTAAGACTTTTCAAGTTGTGCCAGAAATGAGT
TTCCACCATCCTTAGATCTACACCAGGAGATTTCCAGCAGGAAGATCAGAAAAAGGAAGTCCCCAAGAG
GATACTGGACCAGAAGTTTGGGGAGCCCATATACCCTCTAGGCTGCCTCCACTCCACTCCCATATTCTGA
ATCCAGCAGGCCCTCACCAGCCACTTCCCATGACTCCTATTCTGGAGGGTTCTCACAGAGCTCATTCTG
TGCTTTTTGAAAACAGTGACAGCTTTTCTGAGGACAGCAGTACGCTGGTTCGGACCAGGTCTTCCCAT
CACTATTGAAATGCTAAAAGTTCAGAGCAGTGAAGAAGAAGAGGAGCAAACCTGTCCATCCACATTCAGT
GAAGAAATGACACCTACCTCAGTCATTCTAAATTACCACAGTGTCTACGGGAGGAAGAAGAGAAGGAGA
GCGACTCTGATTCAGAAGGTCCCATTAGTACCGAGATGAAGAAGATGAAGATGAAAGCTATCAGAGTGC
TCTCGCCAACAAAGTGAAGAGGAAAGACACACTGGCAATGAAGTTGAACCACAGACCCAGTGAACCAGAG
TTGAACCTGAATTCTTGGCCTTGTAAAAGCAAGGAGGAGTGAATGAAATACGGCACAGATTGGAACA
CACTGATCCGGCGACTGAGTCAAAGACCAACACCAAGAAGAACTAGAACAACGCAATATATTGCAACCTAA
AAATGAAGCTGATCGTACGGCAGAAAAACGAGAAATTAACGTCGGCTCACTAGAAAGCTCAGTCAAAGG
CCAAGTGTGCTGAACTCCTTGCCAGGAAGATTCTGAGGTTAATGAATATGTAGAGGTAACAGATGCTC
AAGATTATGACCGGCGAGCCGACAAACCTTGGACCAAACTGACCCTGCTGACAAGGCTGCCATAAGAAA
AGAATTAATGAATTTAAAAGCTCCGAGATGGAGGTTTCATGAAGAGAGCAAACATTTTACACGCTACCAT
CGTCCA

ACGCGTACGCGGCCGCTCGAGCAGAACTCATCTCAGAAGAGGATCTGGCAGCAAATGATATCCTGGATT
ACAAGGATGACGACGATAAGGTTTAA

Protein Sequence: >RC206425 protein sequence
 Red=Cloning site Green=Tags(s)

MEDPFEEADQPTTEPGMVLDSVEAGDTPPTKRKSKFSGFGKIFKPWKWRKKSSDKFKETSEVLKERIS
 MRKPREELVKGVLLEDPEQGGEDPGKPSDAMLKNGHTTPIGNARSSSPVQVEEPPVRLASLRKAIPED
 LKKRLGSTGSQPNSEAEVSPENVPKPLLPPKRPLSSSHEASEGQAKDATSSGGTARFIIISTSIITAPAA
 TTAATSLAKTVNLVTPSPAPRTLPAAPASTNTTATPSLTHMVPKQPPIPPPKPAHRNSNPVIAELSQA
 INSGTLLSKPSPPLPPKRGIPSTSVPTLESAAAITTKTPSDEREKSTCSMGSELLPMISPRSPSPPLPTH
 IPPEPPRTPPPFAKTFQVVEIEFPPSLDLHQEIPQQEDQKKEVPKRILDQNFGEPIHPSRLPPLPLHIR
 IQQALTSPLPMPPILEGSHRAHSLLFENSDFSEDSSTLGRTRSLPITIEMLKVPDDEEEETCPSTFS
 EEMTPTSVIPKLPQCLREEEKESSDSESGPIQYRDEEDEDESYQSALANKVKRKDTLAMKLNHRPSEPE
 LNLNSWPCKSKEEWEIRHQIGNTLIRRLSQRPTPEELEQRNIIQPKNEADRQAEKREIKRRLTRKLSQR
 PTVAELLARKILRFNEYVEVTDADQYDRRADKPWTKLTPADKAAIRKELNEFKSSEMEVHEESKHFTRYH
 RP

TRTRPLEQKLISEEDLAANDILDYKDDDDKV

Chromatograms: https://cdn.origene.com/chromatograms/mk6519_g03.zip

Restriction Sites: Sgfl-MluI

Cloning Scheme:

Cloning sites used for ORF Shuttling:



* The last codon before the Stop codon of the ORF

ACCN: NM_001048183

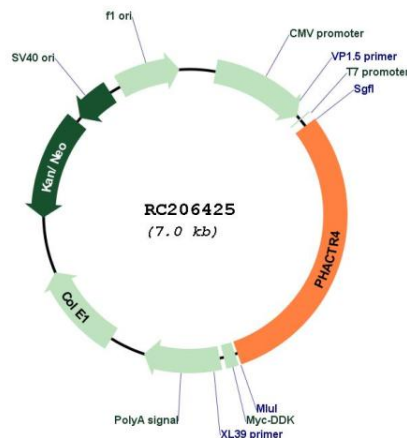
ORF Size: 2106 bp

OTI Disclaimer: The molecular sequence of this clone aligns with the gene accession number as a point of reference only. However, individual transcript sequences of the same gene can differ through naturally occurring variations (e.g. polymorphisms), each with its own valid existence. This clone is substantially in agreement with the reference, but a complete review of all prevailing variants is recommended prior to use. [More info](#)

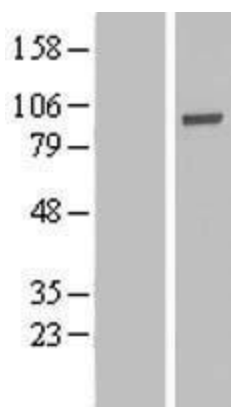
OTI Annotation: This clone was engineered to express the complete ORF with an expression tag. Expression varies depending on the nature of the gene.

Components:	The ORF clone is ion-exchange column purified and shipped in a 2D barcoded Matrix tube containing 10ug of transfection-ready, dried plasmid DNA (reconstitute with 100 ul of water).
Reconstitution Method:	<ol style="list-style-type: none"> 1. Centrifuge at 5,000xg for 5min. 2. Carefully open the tube and add 100ul of sterile water to dissolve the DNA. 3. Close the tube and incubate for 10 minutes at room temperature. 4. Briefly vortex the tube and then do a quick spin (less than 5000xg) to concentrate the liquid at the bottom. 5. Store the suspended plasmid at -20°C. The DNA is stable for at least one year from date of shipping when stored at -20°C.
RefSeq:	<u>NM_001048183.3</u>
RefSeq Size:	6225 bp
RefSeq ORF:	2109 bp
Locus ID:	65979
UniProt ID:	<u>Q8IZ21</u>
Cytogenetics:	1p35.3
MW:	78.2 kDa
Gene Summary:	<p>This gene encodes a member of the phosphatase and actin regulator (PHACTR) family. Other PHACTR family members have been shown to inhibit protein phosphatase 1 (PP1) activity, and the homolog of this gene in the mouse has been shown to interact with actin and PP1. Multiple transcript variants encoding different isoforms have been found for this gene. [provided by RefSeq, Jul 2008]</p>

Product images:



Circular map for RC206425



Western blot validation of overexpression lysate (Cat# [LY420773]) using anti-DDK antibody (Cat# [TA50011-100]). Left: Cell lysates from untransfected HEK293T cells; Right: Cell lysates from HEK293T cells transfected with RC206425 using transfection reagent MegaTran 2.0 (Cat# [TT210002]).