

Product datasheet for **RC206424**

MS4A5 (NM_023945) Human Tagged ORF Clone

Product data:

Product Type: Expression Plasmids
Product Name: MS4A5 (NM_023945) Human Tagged ORF Clone
Tag: Myc-DDK
Symbol: MS4A5
Synonyms: CD20-L2; CD20L2; TETM4
Mammalian Cell Selection: Neomycin
Vector: pCMV6-Entry (PS100001)
E. coli Selection: Kanamycin (25 ug/mL)
ORF Nucleotide Sequence: >RC206424 ORF sequence
Red=Cloning site Blue=ORF Green=Tags(s)

TTTTGTAATACGACTCACTATAGGGCGCCGGGAATTCGTCGACTGGATCCGGTACCGAGGAGATCTGCC
GCC**CGATCGCC**

ATGGATTCAAGCACCGCACACAGTCCGGTGTCTGGTATTTCTCCAGAAATCACTGCTTCAGAATATG
AGTCCACAGAACCTTCAGCCACGACCTTTCAACTCAAAGCCCTTGCAAAAATTATTTGCTAGAAAAAT
GAAAATCTTAGGGACTATCCAGATCCTGTTTGAATTATGACCTTTCTTTGGAGTTATCTTCTTTTC
ACCTTGTTAAAACCATATCCAAGGTTCCCTTTATATTTCTTTCAGGATATCCATTCTGGGGCTCTGTTT
TGTTCAATTAATTCTGGAGCCTTCTAATTGCAGTGAAAAGAAAAACCACAGAACTCTGATAATATTGAG
CCGAATAATGAATTTCTTAGTGCCTGGGAGCAATAGCTGGAATCATTCTCTCACATTTGGTTTCATC
CTAGATCAAACTACATTTGTGGTTATTCTCACAAAATAGTCAGTGTAAGGCTGTTACTGTCTGTTCT
TGGGAATTTGATTACATTGATGACTTTTCAGCATTATTGAATTATTCATTCTCTGCCTTTCTCAATTTT
GGGGTGCCACTCAGAGGATTGTGATTGTGAACAATGTTGT

ACGCGTACGCGGCCGCTCGAGCAGAACTCATCTCAGAAGAGGATCTGGCAGCAATGATATCCTGGATT
ACAAGGATGACGACGATAAGGTTTAA

Protein Sequence: >RC206424 protein sequence
Red=Cloning site Green=Tags(s)

MDSSTAHPVFLVFPPEITASEYESTELSATTFSTQSPLQKLFARKMKILGTIQILFGIMTFSFGVIFLF
TLLKPYPRFPFIFLSGYPFWGSVLFINSGAFLIIVKRRKTTETLILSRIMNFLSALGAIAGIILLTFGFI
LDQNYICGYSHQNSQCKAVTVLFLGILITLMTFSIIELFISLPFSILGCHSEDCDCEQCC

TRTRPLEQKLISEEDLAANDILDYKDDDDKV



Chromatograms: https://cdn.origene.com/chromatograms/mk6330_b06.zip

Restriction Sites: SgfI-MluI

Cloning Scheme:



ACCN: NM_023945

ORF Size: 600 bp

OTI Disclaimer: The molecular sequence of this clone aligns with the gene accession number as a point of reference only. However, individual transcript sequences of the same gene can differ through naturally occurring variations (e.g. polymorphisms), each with its own valid existence. This clone is substantially in agreement with the reference, but a complete review of all prevailing variants is recommended prior to use. [More info](#)

OTI Annotation: This clone was engineered to express the complete ORF with an expression tag. Expression varies depending on the nature of the gene.

Components: The ORF clone is ion-exchange column purified and shipped in a 2D barcoded Matrix tube containing 10ug of transfection-ready, dried plasmid DNA (reconstitute with 100 ul of water).

Reconstitution Method:

1. Centrifuge at 5,000xg for 5min.
2. Carefully open the tube and add 100ul of sterile water to dissolve the DNA.
3. Close the tube and incubate for 10 minutes at room temperature.
4. Briefly vortex the tube and then do a quick spin (less than 5000xg) to concentrate the liquid at the bottom.
5. Store the suspended plasmid at -20°C. The DNA is stable for at least one year from date of shipping when stored at -20°C.

RefSeq: [NM_023945.3](#)

RefSeq Size: 762 bp

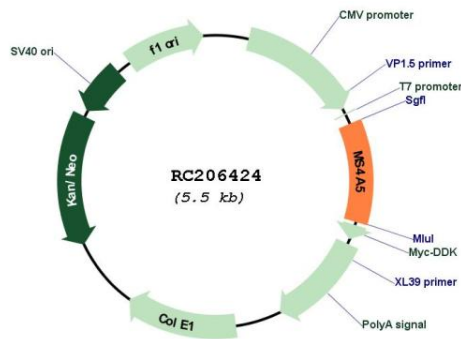
RefSeq ORF: 603 bp

Locus ID: 64232

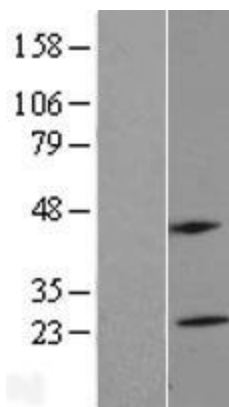
UniProt ID: [Q9H3V2](#)
Cytogenetics: 11q12.2
Protein Families: Druggable Genome, Transmembrane
MW: 22.3 kDa

Gene Summary: This gene encodes a member of the membrane-spanning 4A gene family. Members of this nascent protein family are characterized by common structural features and similar intron/exon splice boundaries and display unique expression patterns among hematopoietic cells and nonlymphoid tissues. Though this member is not expressed in hematopoietic cells specifically, it may be involved in signal transduction like many of its related family members. The gene encoding this protein is localized to 11q12, among a cluster of family members. [provided by RefSeq, Jul 2008]

Product images:



Circular map for RC206424



Western blot validation of overexpression lysate (Cat# [LY411398]) using anti-DDK antibody (Cat# [TA50011-100]). Left: Cell lysates from untransfected HEK293T cells; Right: Cell lysates from HEK293T cells transfected with RC206424 using transfection reagent MegaTran 2.0 (Cat# [TT210002]).