

Product datasheet for **RC206419**

EFCAB1 (NM_024593) Human Tagged ORF Clone

Product data:

Product Type: Expression Plasmids
Product Name: EFCAB1 (NM_024593) Human Tagged ORF Clone
Tag: Myc-DDK
Symbol: EFCAB1
Mammalian Cell Selection: Neomycin
Vector: pCMV6-Entry (PS100001)
E. coli Selection: Kanamycin (25 ug/mL)
ORF Nucleotide Sequence: >RC206419 ORF sequence
Red=Cloning site Blue=ORF Green=Tags(s)

TTTTGTAATACGACTCACTATAGGGCGGCCGGAATTCGTCGACTGGATCCGGTACCGAGGAGATCTGCC
GCC**CGATCGCC**

ATGAACCGCAAGAACTGCAGAAGCTGACGGACACCTTAACCAAAAATTGCAAGCATTTTAATAAATTTG
AAGTGAAGTGTCTTATAAAGCTTTTTATGACTTGGTGGGAGGAGTAGAGAGGCAAGGTCTGGTTGTTGG
ACTGGATCGTAATGCATTTGAAACATCCTGCATGTGACATTTGGAATGACAGATGACATGATTATGGAC
AGAGTATCCGAGGTTTTGATAAAGATAATGATGGCTGTGTAATGTATTGGAGTGGATTCATGGATTAT
CACTGTTTCTTCGAGGATCTTTGGAAGAAAAATGAAATATTGCTTTGAAGTGTGTTGATTTGAATGGTGA
CGGATTCATTTCAAAGGAGGAAATGTTTCACATGTTGAAGAACAGCCTTCTCAAACAGCCATCTGAGGAA
GACCCTGATGAAGGAATTAAGATTTGGTTGAAATAACACTGAAGAAAATGGATCATGACCATGATGGGA
AGCTGTCTTTGCAGACTATGAACTGGCTGTGAGAGAAGAGACTTTCTACTGGAGGCCCTTTGGGCCATG
TCTTCCTGATCAAAGAGCCAGATGGAATTTGAAGCTCAAGTATTCAAAGATCCAATGAATTCATGAT
ATG

ACGCGTACGCGGCCGCTCGAGCAGAACTCATCTCAGAAGAGGATCTGGCAGCAATGATATCCTGGATT
ACAAGGATGACGACGATAAGGTTTAA

Protein Sequence: >RC206419 protein sequence
Red=Cloning site Green=Tags(s)

MNRKQLQKLTDTLTKNCKHFNKFEVNCILKLFYDLVGGVERQGLVVGLDNRNFRNILLHVTFGMTDDMIMD
RVFRGFDKNDGCVNLEWIHGLSLFLRGSLEEKMKYCFEVDLNGDGFISKEEMFHMLKNSLLKQPSEE
DPDEGIKDLVEITLKKMDHDHDKLSFADYELAVREETLLLEAFGPCLPDPKSQLMEFEAQVFKDPNEFND
M

TRTRPLEQKLISEEDLAANDILDYKDDDDKV

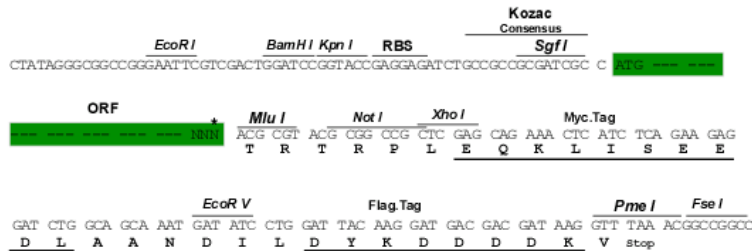
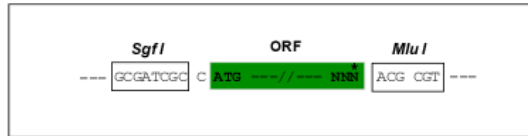


Chromatograms: https://cdn.origene.com/chromatograms/mk6521_h04.zip

Restriction Sites: SgfI-MluI

Cloning Scheme:

Cloning sites used for ORF Shuttling:



* The last codon before the Stop codon of the ORF

ACCN: NM_024593

ORF Size: 633 bp

OTI Disclaimer: Due to the inherent nature of this plasmid, standard methods to replicate additional amounts of DNA in E. coli are highly likely to result in mutations and/or rearrangements. Therefore, OriGene does not guarantee the capability to replicate this plasmid DNA. Additional amounts of DNA can be purchased from OriGene with batch-specific, full-sequence verification at a reduced cost. Please contact our customer care team at custsupport@origene.com or by calling 301.340.3188 option 3 for pricing and delivery.

The molecular sequence of this clone aligns with the gene accession number as a point of reference only. However, individual transcript sequences of the same gene can differ through naturally occurring variations (e.g. polymorphisms), each with its own valid existence. This clone is substantially in agreement with the reference, but a complete review of all prevailing variants is recommended prior to use. [More info](#)

OTI Annotation: This clone was engineered to express the complete ORF with an expression tag. Expression varies depending on the nature of the gene.

Components: The ORF clone is ion-exchange column purified and shipped in a 2D barcoded Matrix tube containing 10ug of transfection-ready, dried plasmid DNA (reconstitute with 100 ul of water).

Reconstitution Method:

1. Centrifuge at 5,000xg for 5min.
2. Carefully open the tube and add 100ul of sterile water to dissolve the DNA.
3. Close the tube and incubate for 10 minutes at room temperature.
4. Briefly vortex the tube and then do a quick spin (less than 5000xg) to concentrate the liquid at the bottom.
5. Store the suspended plasmid at -20°C. The DNA is stable for at least one year from date of shipping when stored at -20°C.

RefSeq: [NM_024593.4](#)

RefSeq Size: 2144 bp

RefSeq ORF: 636 bp

Locus ID: 79645

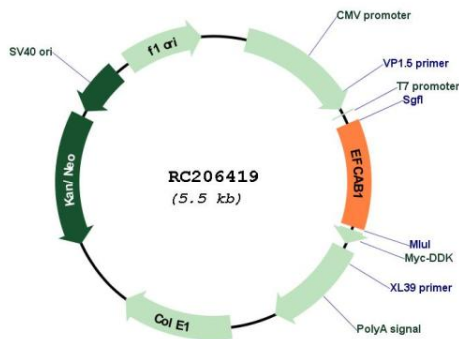
UniProt ID: [Q9HAE3](#)

Cytogenetics: 8q11.21

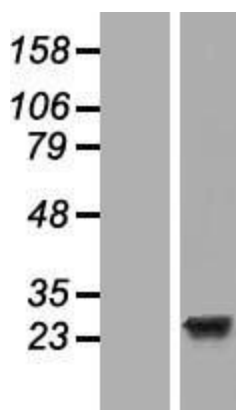
Domains: EFh

MW: 24.5 kDa

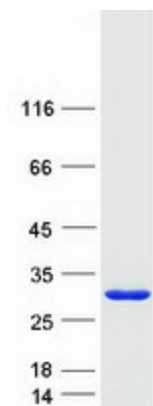
Product images:



Circular map for RC206419



Western blot validation of overexpression lysate (Cat# [LY411209]) using anti-DDK antibody (Cat# [TA50011-100]). Left: Cell lysates from untransfected HEK293T cells; Right: Cell lysates from HEK293T cells transfected with RC206419 using transfection reagent MegaTran 2.0 (Cat# [TT210002]).



Coomassie blue staining of purified EFCAB1 protein (Cat# [TP306419]). The protein was produced from HEK293T cells transfected with EFCAB1 cDNA clone (Cat# RC206419) using MegaTran 2.0 (Cat# [TT210002]).