

## Product datasheet for **RC206417**

### JMJD5 (KDM8) (NM\_024773) Human Tagged ORF Clone

#### Product data:

Product Type:	Expression Plasmids
Product Name:	JMJD5 (KDM8) (NM_024773) Human Tagged ORF Clone
Tag:	Myc-DDK
Symbol:	JMJD5
Synonyms:	JMJD5
Mammalian Cell Selection:	Neomycin
Vector:	pCMV6-Entry (PS100001)
E. coli Selection:	Kanamycin (25 ug/mL)
ORF Nucleotide Sequence:	>RC206417 ORF sequence Red=Cloning site Blue=ORF Green=Tags(s)

TTTTGTAATACGACTCACTATAGGGCGGCCGGAATTCGTCGACTGGATCCGGTACCGAGGAGATCTGCC  
GCC**CGATCGCC**

ATGGCTGGAGACACCCACTGCCCGCAGAGCCCCTGGCCAGAGAAGGCACTTTATGGGAGGCCCTCAGGG  
CGCTCCTGCCGCACAGTAAAGAAGACCTGAAGTTGGACCTCGGGGAGAAAGTGGAGAGGAGCGTGGTGAC  
ATTGTTGCAGCGAGCCACTGAGCTCTTCTACGAGGGCAGGAGGGACGAGTGTCTGCAGAGCAGCGAGGTG  
ATCCTGGACTACTCCTGGGAGAAGCTCAACACGGGCACATGCCAGGACGTAGACAAGACTGGCGCCGGG  
TCTACGCCATCGGCTGCCTCCTGAAAGCCCTGTGTCTGTGCCAGGCACCTGAGGATGCCAACACTGTGGC  
CGCAGCCCTGCGGTCTGTGACATGGGCCTGTGATGGGGCAGCCATCCTGGGGGACATCCTTCTTAAA  
GTCGCTGCCATCCTCCAGACACACCTCCCTGAAAAGAGGCCTGCCCGTGGCTCCCTCCCAGAGCAACCTT  
GCACAAAGAAAGCAAGGGCGGACCATGGTTGATTCCAGATGTGAAGTTAGAAAAACAGTCCCCCGGCT  
GCACCGTCCGTCCTCCAGCATTTCAGGGAGCAGTTTTTGGTTCCAGGGAGGCCCGTGATCCTGAAAGGC  
GTGGCTGACCACTGGCCGTGCATGCAGAAGTGGAGTTGGAGTATATCCAGGAGATCGTGGCTGCCGAA  
CTGTCCCAGTGAAGTTGGTTCGAGGTACACAGATGAGGAATGGTCCCAGACCCTCATGACGGTCAACGA  
GTTTCATCAGCAAATACATCGTGAATGAGCAAGGACGTCGGGTACCTTGCTCAGCACCAGCTCTTTGAC  
CAGATCCCGGAGTTGAAGCAGGACATCAGCATCCCCGACTACTGCAGCCTGGGCGATGGGAGGAGGAGG  
AAATCACCATCAATGCCTGGTTTGGTCCCCAGGGAACCATCTCCCCTACATCAGGATCCCCAGCAAAA  
CTTCTAGTGCAGGTGATGGGGAGGAAGTACATCCGGCTGATTCCCCGAGGAGTCAGGGGCTCTGTAC  
CCTCATGACACGCACCTTCTCCATAACACGAGCCAGGTTGACGTGGAGAATCCCAGCTGGAAAAGTTCC  
CCAAGTTTGCCAAGGCCCATTCCTGTCTGCATCCTGTCTCCTGGAGAGATCCTGTTTCATCCCGTGAA  
ATACTGGCATTACGTGCGGGCTCTGATTTGAGCTTCTCGGTCAGCTTCTGGTGGTGC

**ACGGT**ACGGCGCCGCTCGAGCAGAAACTCATCTCAGAAGAGGATCTGGCAGCAATGATATCCTGGATT  
ACAAGGATGACGACGATAAGGTTTAA



[View online >](#)

**Protein Sequence:** >RC206417 protein sequence  
Red=Cloning site Green=Tags(s)

MAGDTHCPAEPLAREGLWEALRALLPHSKEDLKLDLGEKVERSIVTLLQRATELFYEGRRDECLQSSEV  
 ILDYSWEKLNLTGWQDVKDWRVYAIGCLLKALCLCQAPEDANTVAAALRVCDMGLLMGAAILGDILLK  
 VAAILQTHLPGRPARGSLPEQPCTKKARADHGLIPDVKLEKTVPRLHRPSLQHFREQFLVGRPVILKG  
 VADHWPCMQKWSLEYIQEIAGCRTVPVEVGSRYTDEEWSQTLMTVNEFISKYIVNEPRDVGYLEAQLFD  
 QIPELKQDISIPDYCSLDGEEEEITINAWFGPQGTISPLHQDPQONFLVQVMGRKYIRLYSPQESGALY  
 PHDTHLLHNTSQVDVENPDLEKFPKFAKAPFLSCILSPGEILFIPVKYWHYVRALDLSFSVSWFWWS

TRTRPLEQKLISEEDLAANDILDYKDDDDKV

**Chromatograms:** [https://cdn.origene.com/chromatograms/mk6197\\_d04.zip](https://cdn.origene.com/chromatograms/mk6197_d04.zip)

**Restriction Sites:** SgfI-MluI

**Cloning Scheme:**



\* The last codon before the Stop codon of the ORF

**ACCN:** NM\_024773

**ORF Size:** 1248 bp

**OTI Disclaimer:** The molecular sequence of this clone aligns with the gene accession number as a point of reference only. However, individual transcript sequences of the same gene can differ through naturally occurring variations (e.g. polymorphisms), each with its own valid existence. This clone is substantially in agreement with the reference, but a complete review of all prevailing variants is recommended prior to use. [More info](#)

**OTI Annotation:** This clone was engineered to express the complete ORF with an expression tag. Expression varies depending on the nature of the gene.

**Components:** The ORF clone is ion-exchange column purified and shipped in a 2D barcoded Matrix tube containing 10ug of transfection-ready, dried plasmid DNA (reconstitute with 100 ul of water).

**Reconstitution Method:**

1. Centrifuge at 5,000xg for 5min.
2. Carefully open the tube and add 100ul of sterile water to dissolve the DNA.
3. Close the tube and incubate for 10 minutes at room temperature.
4. Briefly vortex the tube and then do a quick spin (less than 5000xg) to concentrate the liquid at the bottom.
5. Store the suspended plasmid at -20°C. The DNA is stable for at least one year from date of shipping when stored at -20°C.

**RefSeq:** [NM\\_024773.3](#)

**RefSeq Size:** 2481 bp

**RefSeq ORF:** 1251 bp

**Locus ID:** 79831

**UniProt ID:** [Q8N371](#)

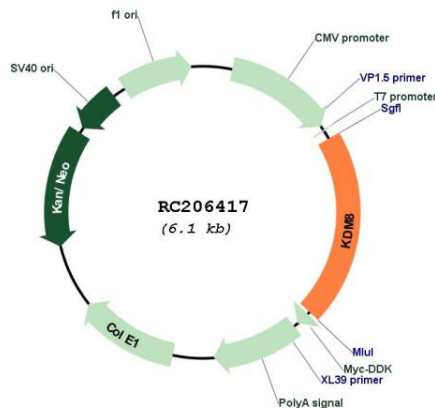
**Cytogenetics:** 16p12.1

**Domains:** JmjC

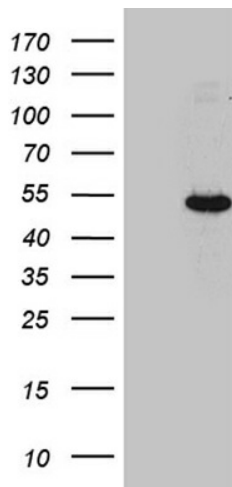
**MW:** 47.3 kDa

**Gene Summary:** This gene likely encodes a histone lysine demethylase. Studies of a similar protein in mouse indicate a potential role for this protein as a tumor suppressor. Alternatively spliced transcript variants have been described.[provided by RefSeq, Feb 2009]

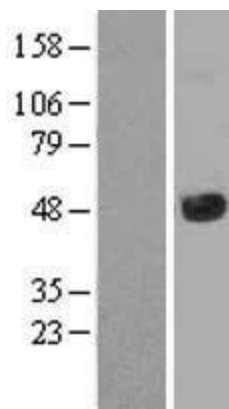
**Product images:**



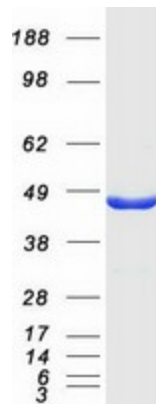
Circular map for RC206417



HEK293T cells were transfected with the pCMV6-ENTRY control (Cat# [PS100001], Left lane) or pCMV6-ENTRY JMJD5 (Cat# RC206417, Right lane) cDNA for 48 hrs and lysed. Equivalent amounts of cell lysates (5 ug per lane) were separated by SDS-PAGE and immunoblotted with anti-JMJD5 (Cat# [TA810968]). Positive lysates [LY403027] (100ug) and [LC403027] (20ug) can be purchased separately from OriGene.



Western blot validation of overexpression lysate (Cat# [LY403027]) using anti-DDK antibody (Cat# [TA50011-100]). Left: Cell lysates from untransfected HEK293T cells; Right: Cell lysates from HEK293T cells transfected with RC206417 using transfection reagent MegaTran 2.0 (Cat# [TT210002]).



Coomassie blue staining of purified KDM8 protein (Cat# [TP306417]). The protein was produced from HEK293T cells transfected with KDM8 cDNA clone (Cat# RC206417) using MegaTran 2.0 (Cat# [TT210002]).