

Product datasheet for **RC206406**

CPEB1 (NM_001079535) Human Tagged ORF Clone

Product data:

Product Type:	Expression Plasmids
Product Name:	CPEB1 (NM_001079535) Human Tagged ORF Clone
Tag:	Myc-DDK
Symbol:	CPEB1
Synonyms:	CPE-BP1; CPEB; CPEB-1; h-CPEB; hCPEB-1
Mammalian Cell Selection:	Neomycin
Vector:	pCMV6-Entry (PS100001)
E. coli Selection:	Kanamycin (25 ug/mL)



[View online »](#)

ORF Nucleotide Sequence:

>RC206406 ORF sequence
 Red=Cloning site Blue=ORF Green=Tags(s)

TTTTGTAATACGACTCACTATAGGGCGGCCGGAATTCGTCGACTGGATCCGGTACCGAGGAGATCTGCC
 GCC**CGGATCGCC**

ATGCTTTTCCCAACTCTGCGCAAGAATCTCCCGTGGCCTCCAGATGCAAATGACTTGTGCCTTGGCC
 TGCAGTCCCTCAGTCTGACAGGCTGGGACCGACCTGGAGCACCCAGGACTCAGATTCTCAGCCCAGAG
 CAGCACACACTCGGTAAGTCTGAGCATGCTCCATAACCCACTGGGAAATGTCCTAGGAAAACCCCTTGAGC
 TTCCTGCCTCTGGATCCCCTTGGGTCTGACTTGGTGGACAAGTTCCAGCACCCCTCAGTTAGAGGATCAC
 GCCTGGACACCCGGCCATCCTGGACTCTCGATCTAGCAGCCCTCTGACTCAGACACCAGTGGCTTCAG
 CTCTGGATCAGATCATCTCTCAGATTTGATTTCAAGCCTTCGCATTTCTCCACCTCTGCCCTTCTGTCT
 CTGTGAGGGGTGGTCCCAGAGACCCCTTAAAGATGGGGGTAGGGTCTCGGATGGACCAAGAGCAAGCTG
 CTCTTGTGCAGTCACTCCCTCCCAACCAGTCTTCAAAGAGATGGCCAGGAGCTTCTGTGTGGCCATC
 CTGGGACCTCTCGAAGCTCCCAAGACCCCTTACAGCATAGAGAGAGAGGCCAGGCTGCACCGACAAGCT
 GCAGCTGTGAATGAAGCCACCTGTACCTGGAGTGGCCAGCTTCTCCCGGAACTATAAGAACCCCATCT
 ACTCTTGAAGGTGTTTCTAGGAGGTGTTCTTGGGATATTACAGAAGCTGGATTAGTTAACACCTTCCG
 TGTTTTGGCTCTTTGAGTGTGGAGTGGCTGGTAAGGATGGCAAGCATCCCGGTGTCCTCCAAAGGG
 TATGTGTATCTGGTCTTGAAGTACAGAAAGTCTGTCCGATCCTTGCTTCAAGGCTTCTCATGACCCGC
 TGAGCCCAGATGGCCTGAGTGAATATTATTTCAAGATGTCAGCCGAAGGATGCGCTGCAAGGAGGTGCA
 GGTGATCCCTGGGTATTAGCCGACAGTAACTTTGCCGAGCCCATCTCAGAGGCTTGACCCAGCAGG
 ACGGTGTTTGTGGTGTCTGCATGGAATGCTAAATGCTGAGGCCCTGGCAGCCATCTTGAACGACCTAT
 TTGGTGGAGTGGTGTATGCCGGATTGACACAGATAAGACAAGTATCCATTGGTCTGGTGTGAC
 TTTCAATAACCAACGGAGTTACCTGAAAGCAGTCAGCGTGTCTTTGTGGAGATCAAACCAAGTTT
 ACAAGAAGGTTTCAAGTACCCCTACCTGGAAGATTCTCTGTGTATATCTGCAGTTCTCAGCCTGGT
 CTTTCTTCTGTGAGATCAGGTCTGCTTCAAATACTTCTGCCGAGCTGTGGCACTGGCGGCACAGCAT
 GGAGGGCTGCGCCACCAGCCCTGATGCGGAACCAAGAACCGAGATTCCAGC

ACGCGTACGCGGCCGCTCGAGCAGAAACTCATCTCAGAAGAGGATCTGGCAGCAATGATATCCTGGATT
 ACAAGGATGACGACGATAAAGTTTAA

Protein Sequence:

>RC206406 protein sequence
 Red=Cloning site Green=Tags(s)

MLFPTSAQESSRGLPDANDLCLGLQSLSLTGWRPWPSTQSDSSAQSSTHSVLSMLHNPLGNVLGKPPLS
 FLPLDPLGSDLVDKFPAPSVRGSRLDTRPILDSRSSPSDSDTSGFSSGSDHLSLISLRI SPPLPFLS
 LSGGGPRDPLKMGVGSMDQEQAALAAVTPSPSASKRWPASVWPSWDLLEAPKDPFSIEREARLHRQA
 AAVNEATCTWSGQLPPRNYKNPIYSCKVFLGGVPWDITEAGLVNTRVFGSLSVEWPGDKGKHPRCPPKG
 YVYLVFELEKSVRSLQACSHDPLSPDGLSEYFKMSSRRMRCKEVQVIPWVLADSNFVRSRPSQRLDPSR
 TVFVGLHGMNAEALAILNDFGGVYVYAGIDTDKHKYPIGSGRVTFNNQRSYLKAVSAAFVEIKTTKF
 TKKVQIDPYLEDLSLCHICSSQPGPFPCRQVCFKYFCRSCWHWRHSMEGLRHHSPLMRNQKNRDSS

TRTRPLEQKLI SEEDLAANDILDYKDDDDKV

Chromatograms:

https://cdn.origene.com/chromatograms/mk6330_g03.zip

Restriction Sites:

Sgfl-Mlul

Cloning Scheme:


ACCN: NM_001079535

ORF Size: 1458 bp

OTI Disclaimer: The molecular sequence of this clone aligns with the gene accession number as a point of reference only. However, individual transcript sequences of the same gene can differ through naturally occurring variations (e.g. polymorphisms), each with its own valid existence. This clone is substantially in agreement with the reference, but a complete review of all prevailing variants is recommended prior to use. [More info](#)

OTI Annotation: This clone was engineered to express the complete ORF with an expression tag. Expression varies depending on the nature of the gene.

Components: The ORF clone is ion-exchange column purified and shipped in a 2D barcoded Matrix tube containing 10ug of transfection-ready, dried plasmid DNA (reconstitute with 100 ul of water).

- Reconstitution Method:**
1. Centrifuge at 5,000xg for 5min.
 2. Carefully open the tube and add 100ul of sterile water to dissolve the DNA.
 3. Close the tube and incubate for 10 minutes at room temperature.
 4. Briefly vortex the tube and then do a quick spin (less than 5000xg) to concentrate the liquid at the bottom.
 5. Store the suspended plasmid at -20°C. The DNA is stable for at least one year from date of shipping when stored at -20°C.

RefSeq: [NM_001079535.1](#), [NP_001073003.1](#)

RefSeq Size: 3196 bp

RefSeq ORF: 1461 bp

Locus ID: 64506

UniProt ID: [Q9BZB8](#)

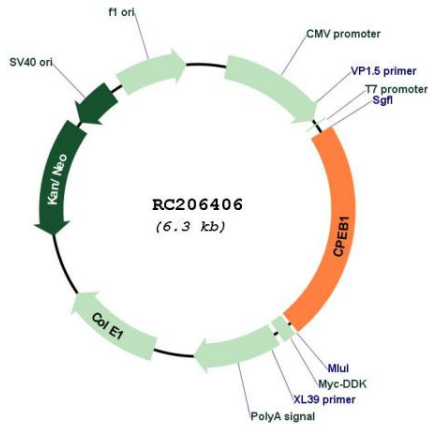
Cytogenetics: 15q25.2

Protein Pathways: Dorso-ventral axis formation, Oocyte meiosis, Progesterone-mediated oocyte maturation

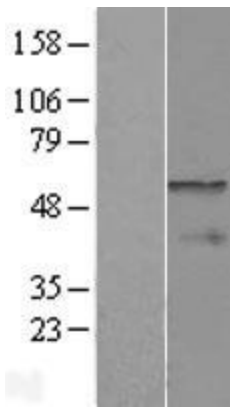
MW: 53.6 kDa

Gene Summary: This gene encodes a member of the cytoplasmic polyadenylation element binding protein family. This highly conserved protein binds to a specific RNA sequence, called the cytoplasmic polyadenylation element, found in the 3' untranslated region of some mRNAs. The encoded protein functions in both the cytoplasm and the nucleus. It is involved in the regulation of mRNA translation, as well as processing of the 3' untranslated region, and may play a role in cell proliferation and tumorigenesis. Alternative splicing results in multiple transcript variants. [provided by RefSeq, Jan 2014]

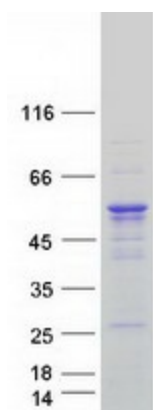
Product images:



Circular map for RC206406



Western blot validation of overexpression lysate (Cat# [LY421522]) using anti-DDK antibody (Cat# [TA50011-100]). Left: Cell lysates from untransfected HEK293T cells; Right: Cell lysates from HEK293T cells transfected with [RC213337] using transfection reagent MegaTran 2.0 (Cat# [TT210002]).



Coomassie blue staining of purified CPEB1 protein (Cat# [TP306406]). The protein was produced from HEK293T cells transfected with CPEB1 cDNA clone (Cat# RC206406) using MegaTran 2.0 (Cat# [TT210002]).