

Product datasheet for **RC206404**

Bcl G (BCL2L14) (NM_138722) Human Tagged ORF Clone

Product data:

Product Type:	Expression Plasmids
Product Name:	Bcl G (BCL2L14) (NM_138722) Human Tagged ORF Clone
Tag:	Myc-DDK
Symbol:	Bcl G
Synonyms:	BCLG
Mammalian Cell Selection:	Neomycin
Vector:	pCMV6-Entry (PS100001)
E. coli Selection:	Kanamycin (25 ug/mL)
ORF Nucleotide Sequence:	>RC206404 ORF sequence Red=Cloning site Blue=ORF Green=Tags(s)

TTTTGTAATACGACTCACTATAGGGCGGCCGGAATTCGTCGACTGGATCCGGTACCGAGGAGATCTGCC
GCC**CGCATCGCC**

ATGTGTAGCACCAGTGGGTGTGACCTGGAAGAAATCCCCCTAGATGATGATGACCTAAACACCATAGAAT
TCAAAATCCTCGCTACTACACCAGACATCATGTCTTCAAGAGCACCCCTGCTCTTCTCACCAAAGCT
GCTGAGAACAGAAGTTTGTCCCAGAGGGGCTGGGAATTGTTTCAGCAAATGAGTCATGGACAGAGGTG
TCATGGCCTTGCAGAAATCCCAATCCAGTGAGAAGGCCATAAACCTTGGCAAGAAAAAGTCTTCTTGA
AAGCATTCTTTGGAGTAGTGGAGAAGGAAGATTTCGAGAGCACGCCTGCCAAGGTCTCTGCTCAGGGTCA
AAGGACGTTGGAATACCAAGATTTCGACAGCCAGCAGTGGTCCAGGTGTCTTTCTAACCTGGAGCAGTGC
TTGGAGCATGAAGCTGTGGACCCCAAAGTCATTTCCATTGCCAACCGAGTAGCTGAAATTGTTTACTCCT
GGCCACCACCACAAGCGACCCAGGCAGGAGGCTTCAAGTCCAAAGAGATTTTTGTAAGTGGGGTCTCTC
CTTCCAGCTCCAAGGCCACGTGCCTGTAGCTTCAAGTTCTAAGAAAGATGAAGAAGAACAATACTAGCC
AAAATTGTTGAGCTGCTGAAATATTCAGGAGATCAGTTGGAAAGAAAGCTGAAGAAGATAAGGCTTTGA
TGGGCACTTCCAGGATGGGCTGTCTACTCTGTTTTCAAGACCATCACAGACCAGGTCTAATGGGTGT
GGACCCAGGGGAGAATCAGAGGTCAAAGCTCAGGGCTTAAAGGCTGCCCTTGAATAGACGTACAGGCC
AAGCTCACAGCTATTGACAACCCCGATGAACAGGGTCTGGGCTTTGGCACCAAGTACCTGAAAGAGA
ACTTCTGCCATGGATCCAGCAGCACGGTGGATGGGAAAAAATACTTGGGATATCACATGAAGAAGTAGA
C

ACGCGTACGCGGCCGCTCGAGCAGAACTCATCTCAGAAGAGGATCTGGCAGCAAATGATATCCTGGATT
ACAAGGATGACGACGATAAGGTTTAA



[View online »](#)

Protein Sequence: >RC206404 protein sequence
Red=Cloning site Green=Tags(s)

MCSTSGCDLEEIPLDDDDLNTIEFKILAYYTRHHVFKSTPALFSPKLLRTRLSQRGLGNCANESWTEV
 SWPCRNQSSEKAINLGKKKSSWKAFFGVVEKEDSQSTPAKVSAQGORTLEYQDSHSQQWSRCLSNVEQC
 LEHEAVDPKVISIANRVAEIVYSWPPPQATQAGGFKSKEIFVTEGLSFQLQGHVPAVSSSKKDEEEQILA
 KIVELLKYSGDQLERKLLKDKALMGHFQDGLSYSVFKITDQVLMGVDPGRGESEVKAQGFKAALVIDVTA
 KLTAIDNHPMNRVLGFGTKYLKENFSPWIQQHGWEEKILGISHEEVD

TRTRPLEQKLISEEDLAANDILDYKDDDDKV

Chromatograms: https://cdn.origene.com/chromatograms/mk6327_d02.zip

Restriction Sites: SgfI-MluI

Cloning Scheme:



ACCN: NM_138722

ORF Size: 981 bp

OTI Disclaimer: The molecular sequence of this clone aligns with the gene accession number as a point of reference only. However, individual transcript sequences of the same gene can differ through naturally occurring variations (e.g. polymorphisms), each with its own valid existence. This clone is substantially in agreement with the reference, but a complete review of all prevailing variants is recommended prior to use. [More info](#)

OTI Annotation: This clone was engineered to express the complete ORF with an expression tag. Expression varies depending on the nature of the gene.

Components: The ORF clone is ion-exchange column purified and shipped in a 2D barcoded Matrix tube containing 10ug of transfection-ready, dried plasmid DNA (reconstitute with 100 ul of water).

Reconstitution Method:

1. Centrifuge at 5,000xg for 5min.
2. Carefully open the tube and add 100ul of sterile water to dissolve the DNA.
3. Close the tube and incubate for 10 minutes at room temperature.
4. Briefly vortex the tube and then do a quick spin (less than 5000xg) to concentrate the liquid at the bottom.
5. Store the suspended plasmid at -20°C. The DNA is stable for at least one year from date of shipping when stored at -20°C.

RefSeq: [NM_138722.1](#), [NP_620048.1](#)

RefSeq Size: 1886 bp

RefSeq ORF: 984 bp

Locus ID: 79370

UniProt ID: [Q9BZR8](#)

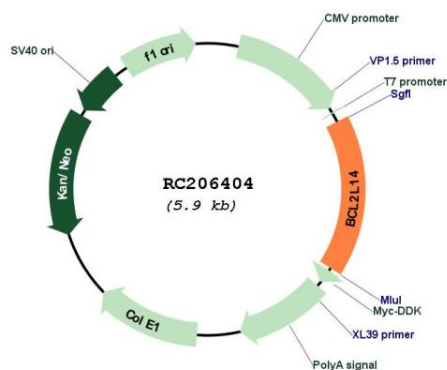
Cytogenetics: 12p13.2

Protein Families: Druggable Genome

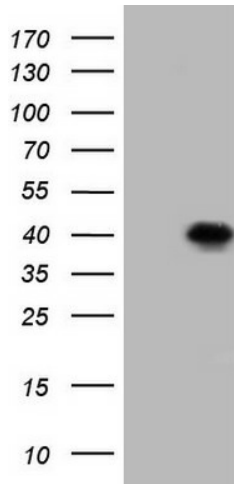
MW: 36.6 kDa

Gene Summary: The protein encoded by this gene belongs to the BCL2 protein family. BCL2 family members form hetero- or homodimers and act as anti- or pro-apoptotic regulators that are involved in a wide variety of cellular activities. Overexpression of this gene has been shown to induce apoptosis in cells. Three alternatively spliced transcript variants encoding two distinct isoforms have been reported for this gene. [provided by RefSeq, May 2009]

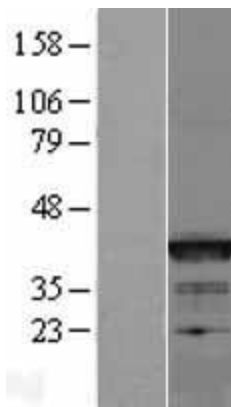
Product images:



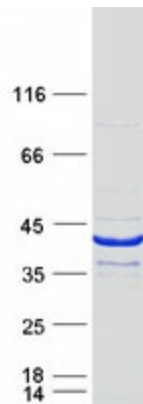
Circular map for RC206404



HEK293T cells were transfected with the pCMV6-ENTRY control (Cat# [PS100001], Left lane) or pCMV6-ENTRY BCL2L14 (Cat# RC206404, Right lane) cDNA for 48 hrs and lysed. Equivalent amounts of cell lysates (5 ug per lane) were separated by SDS-PAGE and immunoblotted with anti-BCL2L14 (Cat# [TA808925])(1:2000). Positive lysates [LY408531] (100ug) and [LC408531] (20ug) can be purchased separately from OriGene.



Western blot validation of overexpression lysate (Cat# [LY408532]) using anti-DDK antibody (Cat# [TA50011-100]). Left: Cell lysates from untransfected HEK293T cells; Right: Cell lysates from HEK293T cells transfected with [RC215213] using transfection reagent MegaTran 2.0 (Cat# [TT210002]).



Coomassie blue staining of purified BCL2L14 protein (Cat# [TP306404]). The protein was produced from HEK293T cells transfected with BCL2L14 cDNA clone (Cat# RC206404) using MegaTran 2.0 (Cat# [TT210002]).