

Product datasheet for **RC206403**

ITM2C (NM_001012516) Human Tagged ORF Clone

Product data:

Product Type:	Expression Plasmids
Product Name:	ITM2C (NM_001012516) Human Tagged ORF Clone
Tag:	Myc-DDK
Symbol:	ITM2C
Synonyms:	BRI3; BRICD2C; E25; E25C; ITM3
Mammalian Cell Selection:	Neomycin
Vector:	pCMV6-Entry (PS100001)
E. coli Selection:	Kanamycin (25 ug/mL)
ORF Nucleotide Sequence:	>RC206403 ORF sequence Red=Cloning site Blue=ORF Green=Tags(s)

TTTTGTAATACGACTCACTATAGGGCGCCGGGAATTCGTCGACTGGATCCGGTACCGAGGAGATCTGCC
GCC**CGATCGCC**

ATGGTGAAGATTAGCTTCCAGCCCGCCGTGGCTGGCATCAAGGGCGACAAGGCTGACAAGGCGTCGGCGT
CGGCCCTGCGCCGGCCTCGGCCACCGAGATCCTGCTGACGCGGCTAGGGAGGAGCAGCCCCACAACA
TCGATCCAAGAGGGGGAGCTCAGTGGCGGCGTGTGCTACCTGTCGATGGGCATGGTCGTGCTCATG
GGCCTCGTGTTCGCTCTGTCTACATCTACAGATACTTCTTTCTTGCACAGCTGGCCGAGATAACTTCT
TCCGCTGTGGTGTGCTGTATGAGGACTCCCTGTCTCCAGGTCCGGACTCAGATGGAGCTGGAAGAGGA
TGTGAAAATCTACCTCGACGAGAACTACGAGCGCATCAACGTGCCTGTGCCCCAGTTGGCGGCGGTGAC
CCTGCAGACATCATCCATGACTTCCAGCGGAGGGGACCTACCTGCCGACAGCTACATCATCCAGGAGG
AGATGGTGGTCACGGAGCATGTCAGTGACAAGGAGGCCCTGGGGTCTTCATCTACCACCTGTGCAACGG
GAAAGACACCTACCGGCTCCGGCGCCGGCAACGCGGAGGCGGATCAACAAGCGTGGGGCCAAGAAGTGC
AATGCCATCCGCCACTTCGAGAACACCTTCGTGGTGGAGACGCTCATCTGCGGGTGGTG

ACGCGTACGCGGGCGCTCGAGCAGAACTCATCTCAGAAGAGGATCTGGCAGCAAATGATATCTGGATT
ACAAGGATGACGACGATAAGGTTTAA



[View online »](#)

Protein Sequence: >RC206403 protein sequence
Red=Cloning site Green=Tags(s)

MVKISFQPAVAGIKGDKADKASAPAPASATEILLTPAREEQPPQHRSKRGSSVGGVCYLSMGMVLLM
 GLVFASVYIYRYFFLAQLARDNFFRCGLVYEDSLSSQVRTQMELEEDVKIYLDENYERINVPVPQFGGD
 PADIIHDFQRRGTYPQTYIIQEEMVVTEHVSDKEALGSFIYHLCNGKDTYRLRRRATRRRINKRGAKNC
 NAIRHFENTFVVETLICGVV

TRTRPLEQKLISEEDLAANDILDYKDDDDKV

Chromatograms: https://cdn.origene.com/chromatograms/mk6327_b01.zip

Restriction Sites: SgfI-MluI

Cloning Scheme:



ACCN: NM_001012516

ORF Size: 690 bp

OTI Disclaimer: The molecular sequence of this clone aligns with the gene accession number as a point of reference only. However, individual transcript sequences of the same gene can differ through naturally occurring variations (e.g. polymorphisms), each with its own valid existence. This clone is substantially in agreement with the reference, but a complete review of all prevailing variants is recommended prior to use. [More info](#)

OTI Annotation: This clone was engineered to express the complete ORF with an expression tag. Expression varies depending on the nature of the gene.

Components: The ORF clone is ion-exchange column purified and shipped in a 2D barcoded Matrix tube containing 10ug of transfection-ready, dried plasmid DNA (reconstitute with 100 ul of water).

Reconstitution Method:

1. Centrifuge at 5,000xg for 5min.
2. Carefully open the tube and add 100ul of sterile water to dissolve the DNA.
3. Close the tube and incubate for 10 minutes at room temperature.
4. Briefly vortex the tube and then do a quick spin (less than 5000xg) to concentrate the liquid at the bottom.
5. Store the suspended plasmid at -20°C. The DNA is stable for at least one year from date of shipping when stored at -20°C.

RefSeq: [NM_001012516.2](#)

RefSeq Size: 1949 bp

RefSeq ORF: 693 bp

Locus ID: 81618

UniProt ID: [Q9NQX7](#)

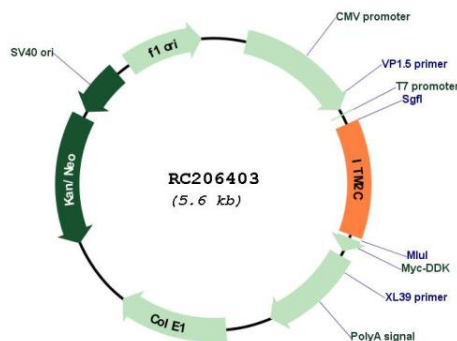
Cytogenetics: 2q37.1

Protein Families: Transmembrane

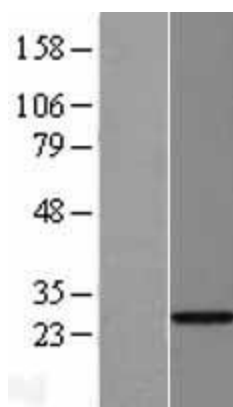
MW: 26 kDa

Gene Summary: Negative regulator of amyloid-beta peptide production. May inhibit the processing of APP by blocking its access to alpha- and beta-secretase. Binding to the beta-secretase-cleaved APP C-terminal fragment is negligible, suggesting that ITM2C is a poor gamma-secretase cleavage inhibitor. May play a role in TNF-induced cell death and neuronal differentiation (By similarity).[UniProtKB/Swiss-Prot Function]

Product images:



Circular map for RC206403



Western blot validation of overexpression lysate (Cat# [LY422882]) using anti-DDK antibody (Cat# [TA50011-100]). Left: Cell lysates from untransfected HEK293T cells; Right: Cell lysates from HEK293T cells transfected with RC206403 using transfection reagent MegaTran 2.0 (Cat# [TT210002]).