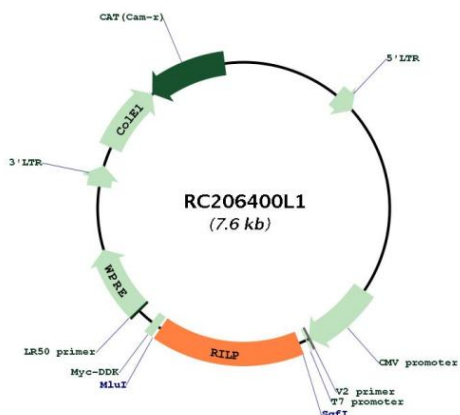
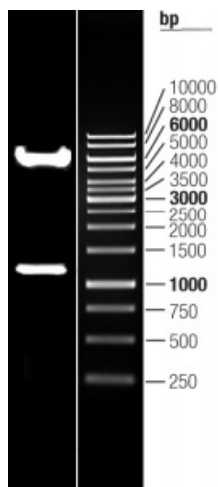


OTI Disclaimer:	The molecular sequence of this clone aligns with the gene accession number as a point of reference only. However, individual transcript sequences of the same gene can differ through naturally occurring variations (e.g. polymorphisms), each with its own valid existence. This clone is substantially in agreement with the reference, but a complete review of all prevailing variants is recommended prior to use. More info
OTI Annotation:	This clone was engineered to express the complete ORF with an expression tag. Expression varies depending on the nature of the gene.
Components:	The ORF clone is ion-exchange column purified and shipped in a 2D barcoded Matrix tube containing 10ug of transfection-ready, dried plasmid DNA (reconstitute with 100 ul of water).
Reconstitution Method:	<ol style="list-style-type: none">1. Centrifuge at 5,000xg for 5min.2. Carefully open the tube and add 100ul of sterile water to dissolve the DNA.3. Close the tube and incubate for 10 minutes at room temperature.4. Briefly vortex the tube and then do a quick spin (less than 5000xg) to concentrate the liquid at the bottom.5. Store the suspended plasmid at -20°C. The DNA is stable for at least one year from date of shipping when stored at -20°C.
RefSeq:	NM_031430.1
RefSeq Size:	1811 bp
RefSeq ORF:	1206 bp
Locus ID:	83547
UniProt ID:	Q96NA2
Cytogenetics:	17p13.3
MW:	44 kDa
Gene Summary:	This gene encodes a lysosomal protein that interacts with RAB7, a small GTPase that controls transport to endocytic degradative compartments. Studies using mutant forms of the two proteins suggest that this protein represents a downstream effector for RAB7, and both proteins act together in the regulation of late endocytic traffic. A unique region of this protein has also been shown to be involved in the regulation of lysosomal morphology. [provided by RefSeq, Sep 2011]

Product images:



Circular map for RC206400L1



Double digestion of RC206400L1 using SgfI and MluI