

Product datasheet for RC206400

RILP (NM_031430) Human Tagged ORF Clone

Product data:

| | |
|---------------------------|---|
| Product Type: | Expression Plasmids |
| Product Name: | RILP (NM_031430) Human Tagged ORF Clone |
| Tag: | Myc-DDK |
| Symbol: | RILP |
| Synonyms: | PP10141 |
| Mammalian Cell Selection: | Neomycin |
| Vector: | pCMV6-Entry (PS100001) |
| E. coli Selection: | Kanamycin (25 ug/mL) |
| ORF Nucleotide Sequence: | >RC206400 representing NM_031430 Red=Cloning site Blue=ORF Green=Tags(s) |

TTTTGTAATACGACTCACTATAGGGCGGCCGGGAATTCGTCGACTGGATCCGGTACCGAGGAGATCTGCC
GCC**CGATCGCC**

ATGGAGCCCAGGAGGGCGGCCCGGGGTGCCTGGCTGGGGTCTCGGGAGGCCGCGGGGTCCGCATCGG
CCGCGGAGCTTGTGTACCATCTAGCCGGGGCCCTGGGCACTGAGCTGCAGGATCTGGCGCGCCGTTTCGG
GCCGGAGCGCGCCGGCTGGTGCCCTAGTGGTGCGGGCGCTGGAGCTTTGGAACAGGCTGCCGTG
GGCCCCCGCCGACTCGCTGCAGGTGTCGGCGCAGCCGGCGGAGCAGGAGCTGCGGCGGCTGCGGGAGG
AGAACGAGCGCCTCCGCAGGGAGCTGCGCGCGGGGCCACAGGAGGAGCGCGCTGCTGCGGCAGCTCAA
GGAGGTCACGGACCGACAGCGGGACGAATCCGGGCGCACAAACCGCGACCTGCGGCAGCGCGCCAGGAG
ACCGAGGCGTTGCAGGAGCAGCTGCAGCGCCTCCTGCTGGTGAACGCTGAGCTGCGGCACAAGCTGGCGG
CCATGCAGACCCAGCTGCGCGCCGCGCAGGACCGCAGAGGGAGCGCCAGCAGCCTGGCGAAGCCGCGAC
TCCGCAGGCTAAAGAGCGAGCGCGGGGAGGCGGGCGGCCAGCAGCAGGACAGGAGCCCGAA
TGGGCGACCGCGGCGCAGGCGCCCCAGGGAACCCTGAGGACCGCGGAGGCGCGCAGCAGCTCGGGC
GCCCTCGGAGGCGAGGCGAGTCCCGCTTTCAGTCCGGAGGAGTTTGAAGCAGATCCTCAGGAGCGGAATGA
ACTCAAAGCCAAAGTGTTCCTGCTCAAGGAGGAAGTGGCTACTTCCAGCGGGAGCTGCTCACAGACCAC
CGGGTCCCCGGCCTTCTGCTCGAGGCCATGAAGGTGGCTGTCCGGAAGCAGCGGAAGAAGATCAAGGCCA
AGATGTTAGGGACACCAGAGGAAGCAGAGAGCAGTGAAGGATGAGGCTGGCCATGGATCCTGCTCTCCGA
TGACAAGGGAGACCATCCCCACCCCGGAGTCCAAAATACAGAGTTTCTTTGGCCTATGTTATCGGGT
AAAGCTGAATCCTCTGAGGATGAGACCAGCAGCCCTGCACCCAGCAAGCTAGGGGGAGAAGAGGAGGCC
AACACAGTCTCCAGCTCCTGATCCGCCCTGTTCTGCCCTCCACGAACACCTTTGTCTGGGGCCTCAGC
CGCCCCAGAGGCC

ACGCGTACGCGGCGGCTCGAGCAGAACTCATCTCAGAAGAGGATCTGGCAGCAAATGATATCCTGGATT
ACAAGGATGACGACGATAAGGTTTAA



[View online »](#)

Protein Sequence: >RC206400 representing NM_031430
Red=Cloning site Green=Tags(s)

MEPRRAAPGVPGWGSREAAGSASAAELVYHLGALGTELQDLARRFGPEAAAAGLVPLVVRALLELEQAAV
 GPAPDSLQVSAQPAEQELRRLREENERLRREL RAGPQEERALLRQLKEVTDQRDELRAHNRDLRQRGQE
 TEALQEQLQRLLLVNAELRHKLAAMQTQLRAAQDRERERQQPGEAATPQAKERARGQAGRPGHQHQEPE
 WATAGAGAPGNPEDPAEAAQQLGRPSEAGQCRFSREEFEQILQERNELKAKVFLKKEELAYFQRELLTDH
 RVPGLLLEAMKVAVRKQRKKIKAKMLGTPEEAESEDEAGPWILLSDDKGDHPPPPESKIQSFFGLWYRG
 KAESSEDETSSPAPSKLGGEEEAQPQSPADPPCSALHEHLCLGASAAPEA

TRTRPLEQKLISEEDLAANDILDYKDDDDKV

Chromatograms: https://cdn.origene.com/chromatograms/mg3102_c09.zip

Restriction Sites: SgfI-MluI

Cloning Scheme:



* The last codon before the Stop codon of the ORF

ACCN: NM_031430

ORF Size: 1203 bp

OTI Disclaimer: The molecular sequence of this clone aligns with the gene accession number as a point of reference only. However, individual transcript sequences of the same gene can differ through naturally occurring variations (e.g. polymorphisms), each with its own valid existence. This clone is substantially in agreement with the reference, but a complete review of all prevailing variants is recommended prior to use. [More info](#)

OTI Annotation: This clone was engineered to express the complete ORF with an expression tag. Expression varies depending on the nature of the gene.

Components: The ORF clone is ion-exchange column purified and shipped in a 2D barcoded Matrix tube containing 10ug of transfection-ready, dried plasmid DNA (reconstitute with 100 ul of water).

Reconstitution Method:

1. Centrifuge at 5,000xg for 5min.
2. Carefully open the tube and add 100ul of sterile water to dissolve the DNA.
3. Close the tube and incubate for 10 minutes at room temperature.
4. Briefly vortex the tube and then do a quick spin (less than 5000xg) to concentrate the liquid at the bottom.
5. Store the suspended plasmid at -20°C. The DNA is stable for at least one year from date of shipping when stored at -20°C.

RefSeq: [NM_031430.3](#)

RefSeq Size: 1811 bp

RefSeq ORF: 1206 bp

Locus ID: 83547

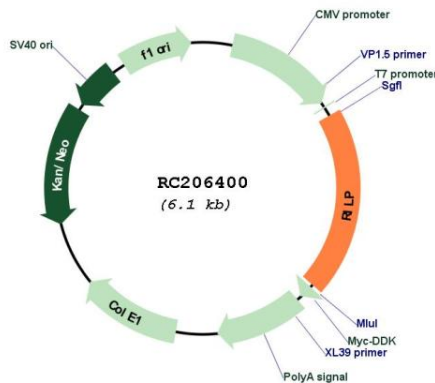
UniProt ID: [Q96NA2](#)

Cytogenetics: 17p13.3

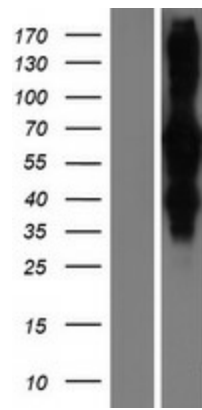
MW: 44 kDa

Gene Summary: This gene encodes a lysosomal protein that interacts with RAB7, a small GTPase that controls transport to endocytic degradative compartments. Studies using mutant forms of the two proteins suggest that this protein represents a downstream effector for RAB7, and both proteins act together in the regulation of late endocytic traffic. A unique region of this protein has also been shown to be involved in the regulation of lysosomal morphology. [provided by RefSeq, Sep 2011]

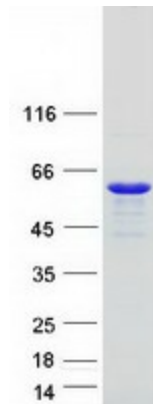
Product images:



Circular map for RC206400



Western blot validation of overexpression lysate (Cat# [LY410508]) using anti-DDK antibody (Cat# [TA50011-100]). Left: Cell lysates from untransfected HEK293T cells; Right: Cell lysates from HEK293T cells transfected with RC206400 using transfection reagent MegaTran 2.0 (Cat# [TT210002]).



Coomassie blue staining of purified RILP protein (Cat# [TP306400]). The protein was produced from HEK293T cells transfected with RILP cDNA clone (Cat# RC206400) using MegaTran 2.0 (Cat# [TT210002]).