

Product datasheet for **RC206395**

TEKT3 (NM_031898) Human Tagged ORF Clone

Product data:

Product Type:	Expression Plasmids
Product Name:	TEKT3 (NM_031898) Human Tagged ORF Clone
Tag:	Myc-DDK
Symbol:	TEKT3
Mammalian Cell Selection:	Neomycin
Vector:	pCMV6-Entry (PS100001)
E. coli Selection:	Kanamycin (25 ug/mL)



[View online »](#)

ORF Nucleotide Sequence:

>RC206395 ORF sequence
 Red=Cloning site Blue=ORF Green=Tags(s)

TTTTGTAATACGACTCACTATAGGGCGGCCGGAATTCGTCGACTGGATCCGGTACCGAGGAGATCTGCC
 GCC**CGGATCGCC**

ATGGAACGTGTAGGTTGTACTTTAACGACAACCTACGCCACCCTAGACCAACCAACCAACTTTCTAC
 CAGCCATCAGTACCATGGCCTCAAGCTACAGGGACCGCTTCCCACTCCAATTTGACCCATAGCCTGAG
 CCTTCCTTGAGACCCAGCACATACTACAAAGTCGCCTCCAATTCCTCAAGCGTGGCCCCGTACTGCACC
 AGATCACAGAGGGTGTCCGAGAATACCATGCTTCCCTTTGTTTCCAACAGAACCCTTTCTTACAAGAT
 ACACACCGGATGACTGGTACAGGTTCAATTTAACCAACTATCAAGAGTCCAACACTTCCCGACATAATTC
 GGAGAACTAAGAGTGGATACATCTCGCCTGATTCAAGACAAATATCAACAAACAAGAAAACTCAGGCA
 GACACAACCCAAAATCTGGGAGAACGTGTCAATGACATAGGGTTTGGAAATCTGAAATCATTATGAGT
 TGGATGAAATGATTGGAGAGACAAATGCACCTACTGATGTGAAGAAAAGACTGGAGCGGGCTTTGATGGA
 GACTGAAGCCCTCTTCAGGTAGCCGAGAATGTCTATTTTCATCGAGAAAAGAGAATGGGAATCGACCTA
 GTTCACGATGAAGTTGAAGCACAACTGCTGACGGAAGTTGATACTATTCTGTGTTGTCAAGAAAAGATGA
 AGCTACATTTGGATAAGGCTATTGCCAACTTGACGCCAACAGAGCGTCCAGCATGAGCTGGAAAAGGA
 CCTGAGTGACAAACAGACGGCTTACCGGATCAACGACAAATGCCACCCTGCGCAACACATCAGACGGT
 GTCGGCTACTTCCGCGGAGTGGAGAGGGTTCGATGCAACTGTCTCAGTGCCTGAGTCTGGGCCAAATTTA
 CAGATGACAAATTTCTCCGCTCCAGAGTGAACGGGCAGCTTCCGCTAAGCTAAGAGACGACATTGAAA
 CCTCTTGGTTGTGACTGCCAATGAGATGTGGAATCAGTTCAACAAAGTGAACCTTCTTTACCAATCGC
 ATTGCTGAGACTGCAGATGCTAAGAATAAGATTACAGACGCACTTAGCAAAGACCCCTGCAGGAGATTTCC
 AGACTGAAATGACCATAGAATCCATCAAGAAGGCCATCAAGGACAAGACTGCCTTCTGAAAGTGGCTCA
 GACCAGACTGGATGAGCGCACAAAGACGGCCGAACATTGAGTTGTGCCGAGACATGGCTCAGCTACGCCTT
 GTTAACGAGGTACACGAGGTTGACGACACCATCCAGACCCCTGCAGCAGCGCTGAGGGATGCAGAGGACA
 CCCTGCAGTCGCTGGTCCACATCAAAGCCACCCTCGAGTATGACCTGGCTGTCAAAGCCAATTCCTGTA
 CATCGACCAGGAAAAATGCATGAGCATGCGCAAGAGCTACCCCAACACCCTCCGGCTGGTTCGGCTTCTGC

ACGCGTACGCGGCCGCTCGAGCAGAAACTCATCTCAGAAGAGGATCTGGCAGCAATGATATCCTGGATT
 ACAAGGATGACGACGATAAGGTTTAA

Protein Sequence:

>RC206395 protein sequence
 Red=Cloning site Green=Tags(s)

MERVGCTLTTTYAHPPTPTNFLPAISTMASSYRDRFPHSNLTHSLPWRPSTYYKVASNSPSVAPYCT
 RSQRVSENTMLPFVSNRTTFFTRYTPDDWYRSNL TNYQESNTSRHNSEKLRVDTSRLIQDKYQQTRKTQA
 DTTQNLGERVNDIGFWKSEIIHELDEMIGETNALTDVKKRLERALMETEAPLQVARECLFHREKRMGIDL
 VHDEVEAQLL TEVDTILCCQERMKHLHDKAIAQLAANRASQHELEKDL SDKQTAYRINDKCHHLRNTSDG
 VGYFRGVERVDATVSPESWAKFTDDNILRSQSERAASAKLRDDIENLLVVTANEMWNQFNKVNLSFTNR
 IAETADAKNKIQTHLAKTLQEIFQTEMTIESIKKAIKDKTAFLKVAQTRLDERTRRPNIELCRDMAQLRL
 VNEVHEVDDTIQTLQQLRDAEDTLQSLVHIKATLEYDLAVKANSLYIDQEKCMSMRKSPYNTLRLVGF

TRTRPLEQKLISEEDLAANDILDYKDDDDKV

Chromatograms:

https://cdn.origene.com/chromatograms/mk6331_g03.zip

Restriction Sites:

SgfI-MluI

Cloning Scheme:

Cloning sites used for ORF Shutting:



* The last codon before the Stop codon of the ORF

ACCN: NM_031898

ORF Size: 1470 bp

OTI Disclaimer: The molecular sequence of this clone aligns with the gene accession number as a point of reference only. However, individual transcript sequences of the same gene can differ through naturally occurring variations (e.g. polymorphisms), each with its own valid existence. This clone is substantially in agreement with the reference, but a complete review of all prevailing variants is recommended prior to use. [More info](#)

OTI Annotation: This clone was engineered to express the complete ORF with an expression tag. Expression varies depending on the nature of the gene.

Components: The ORF clone is ion-exchange column purified and shipped in a 2D barcoded Matrix tube containing 10ug of transfection-ready, dried plasmid DNA (reconstitute with 100 ul of water).

Reconstitution Method:

1. Centrifuge at 5,000xg for 5min.
2. Carefully open the tube and add 100ul of sterile water to dissolve the DNA.
3. Close the tube and incubate for 10 minutes at room temperature.
4. Briefly vortex the tube and then do a quick spin (less than 5000xg) to concentrate the liquid at the bottom.
5. Store the suspended plasmid at -20°C. The DNA is stable for at least one year from date of shipping when stored at -20°C.

RefSeq: [NM_031898.3](#)
RefSeq Size: 1795 bp

RefSeq ORF: 1473 bp

Locus ID: 64518

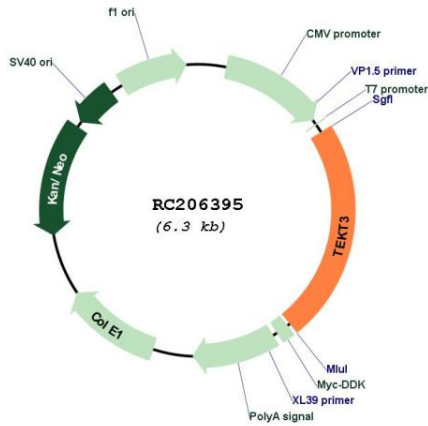
UniProt ID: [Q9BXF9](#)

Cytogenetics: 17p12

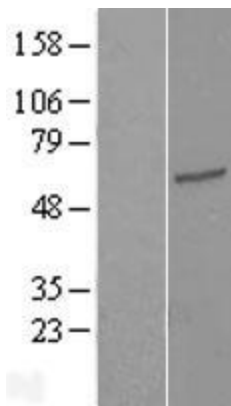
MW: 56.6 kDa

Gene Summary: This gene product belongs to the tektin family of proteins. Tektins comprise a family of filament-forming proteins that are coassembled with tubulins to form ciliary and flagellar microtubules. The exact function of this gene is not known. [provided by RefSeq, Jul 2008]

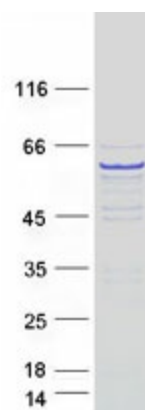
Product images:



Circular map for RC206395



Western blot validation of overexpression lysate (Cat# [LY410446]) using anti-DDK antibody (Cat# [TA50011-100]). Left: Cell lysates from untransfected HEK293T cells; Right: Cell lysates from HEK293T cells transfected with RC206395 using transfection reagent MegaTran 2.0 (Cat# [TT210002]).



Coomassie blue staining of purified TEKT3 protein (Cat# [TP306395]). The protein was produced from HEK293T cells transfected with TEKT3 cDNA clone (Cat# RC206395) using MegaTran 2.0 (Cat# [TT210002]).