

Product datasheet for **RC206390**

FBXL2 (NM_012157) Human Tagged ORF Clone

Product data:

Product Type:	Expression Plasmids
Product Name:	FBXL2 (NM_012157) Human Tagged ORF Clone
Tag:	Myc-DDK
Symbol:	FBXL2
Synonyms:	FBL2; FBL3
Mammalian Cell Selection:	Neomycin
Vector:	pCMV6-Entry (PS100001)
E. coli Selection:	Kanamycin (25 ug/mL)



[View online »](#)

ORF Nucleotide Sequence:

>RC206390 ORF sequence
 Red=Cloning site Blue=ORF Green=Tags(s)

TTTTGTAATACGACTCACTATAGGGCGGCCGGAATTCGTCGACTGGATCCGGTACCGAGGAGATCTGCC
 GCC**GCGATCGCC**

ATGGTTTTCTCAACAATGATGAAGGCCTTATTAACAAAAAGTTACCCAAAGAACTTCTGTTAAGAATAT
 TTTCTTCTTGATATAGTAACTTTGTGCCGATGTGCACAGATTTCCAAGCTTGGAAACATCTTAGCCCT
 GGATGGAAGCAACTGGCAAAGAATAGATCTTTTTAACTTTCAAACAGATGTAGAGGGTTCGAGTGGTGAA
 AATATCTCGAAGCGATGCGGTGGATTCTGAGGAAGCTCAGCTTGCAGGCTGCATTGGTGTGGGGATT
 CCTCTTGAAGACCTTTGCACAGAACTGCCGAAACATTGAACATTTGAACCTCAATGGATGCACAAAAAT
 CACTGACAGCACGTGTTATAGCCTTAGCAGATTCTGTTCCAAGCTGAAACATCTGGATCTGACCTCCTGT
 GTGTCTATTACAAACAGCTCCTGAAGGGGATCAGTGAGGGCTGCCGAAACCTGGAGTACCTGAACCTCT
 CTTGGTGTGATCAGATCACGAAGGATGGCATCGAGGCACTGGTGCAGGTTGTCGAGGCCTGAAAGCCCT
 GCTCCTGAGGGGCTGCACACAGTTAGAAGATGAAGCTCTGAAACACATTCAGAATTACTGCCATGAGCTT
 GTGAGCCTCAACTGCAGTCCTGCTCACGTATCACGGATGAAGGTGTGGTGCAGATATGCAGGGGCTGTC
 ACCGGCTACAGGCTCTCTGCCTTTCGGGTTGCAGCAACCTCACAGATGCCTCTCTTACAGCCCTGGGTTT
 GAACTGTCCGCGACTGCAAATTTGGAGGCTGCCCGATGCTCCCATTTGACTGACGCAGGTTTTACTCTT
 TTAGCTCGGAATTGCCACGAATTGGAGAAGATGGATCTTGAAGAATGCATCCTGATAACCGACAGCACAC
 TCATCCAGCTCTCCATTCAGTGTCTAACTGCAAGCCCTGAGCCTGTCCCACTGTGAACTCATCACAGA
 TGATGGGATCTGCACCTGAGCAACAGTACCTGTGGCCATGAGAGGCTGCGGGTACTGGAGTTGGACAAC
 TGCTCCTCATCACTGATGTGGCCCTGGAACACCTAGAGAAGTCCGAGGCTGAGCCTCCCTCATGTCAAAGTCCA
 CGCTACTTTGCTCCCGTACCCACCGACAGCAGTGGCAGGAAGTGGACAGCAGCTGTGCAGGTGCTGT
 GCATTCTC

ACGCGTACGCGGCCGCTCGAGCAGAACTCATCTCAGAAGAGGATCTGGCAGCAAATGATATCTGGATT
 ACAAGGATGACGACGATAAGGTTTAA

Protein Sequence:

>RC206390 protein sequence
 Red=Cloning site Green=Tags(s)

MVFSNNDGLINKKLPKELLRIFSFLLDIVTLRCRAQISKAWNILALDGSNWQRIDL FNFQTDVEGRVVE
 NISKRCGGFLRKLSLRGICVGDSSLKTFQNCRNIEHLNLNGCTKITDSTCYSLSRFCSKLNKHLDTSC
 VSITNSSLKGISEGCNLEYLNL SWCDQITKDGIEALVRGCRGLKALLRGCTQLEDEALKHIQNYCHEL
 VSLNLQSCSRITDEGVVQICRGCHRLQALCLSGCSNLTASLTALGLNCPRLQILEAARCSHLTDAGFTL
 LARNCHELEKMDLEECILITDSTLIQLSIHCPKLQALSLSHCELITDDGILHLSNSTCGHERLRVLELDN
 CLLITDVALEHLENCRGLERLELYDCQQVTRAGIKRMRAQLPHVKVHAYFAPVTPPTAVAGSGQRLCRCC
 VIL

TRTRPLEQKLISEEDLAANDILDYKDDDDKV

Chromatograms:

https://cdn.origene.com/chromatograms/mk6832_c01.zip

Restriction Sites:

SgfI-MluI

Cloning Scheme:


ACCN: NM_012157

ORF Size: 1269 bp

OTI Disclaimer: The molecular sequence of this clone aligns with the gene accession number as a point of reference only. However, individual transcript sequences of the same gene can differ through naturally occurring variations (e.g. polymorphisms), each with its own valid existence. This clone is substantially in agreement with the reference, but a complete review of all prevailing variants is recommended prior to use. [More info](#)

OTI Annotation: This clone was engineered to express the complete ORF with an expression tag. Expression varies depending on the nature of the gene.

Components: The ORF clone is ion-exchange column purified and shipped in a 2D barcoded Matrix tube containing 10ug of transfection-ready, dried plasmid DNA (reconstitute with 100 ul of water).

Reconstitution Method:

1. Centrifuge at 5,000xg for 5min.
2. Carefully open the tube and add 100ul of sterile water to dissolve the DNA.
3. Close the tube and incubate for 10 minutes at room temperature.
4. Briefly vortex the tube and then do a quick spin (less than 5000xg) to concentrate the liquid at the bottom.
5. Store the suspended plasmid at -20°C. The DNA is stable for at least one year from date of shipping when stored at -20°C.

RefSeq: [NM_012157.5](#)

RefSeq Size: 3000 bp

RefSeq ORF: 1272 bp

Locus ID: 25827

UniProt ID: [Q9UKC9](#)

Cytogenetics: 3p22.3

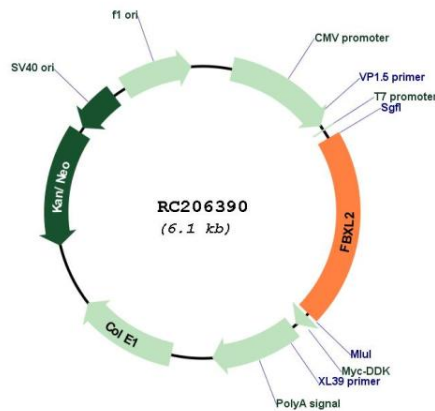
Domains: LRR, F-box, LRR_CC

Protein Families: Druggable Genome

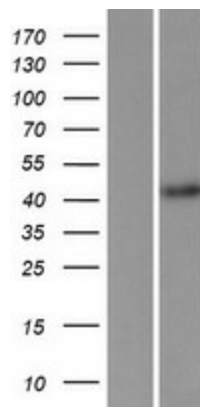
MW: 47.1 kDa

Gene Summary: This gene encodes a member of the F-box protein family which is characterized by an approximately 40 amino acid motif, the F-box. The F-box proteins constitute one of the four subunits of ubiquitin protein ligase complex called SCFs (SKP1-cullin-F-box), which function in phosphorylation-dependent ubiquitination. The F-box proteins are divided into 3 classes: Fbws containing WD-40 domains, Fbls containing leucine-rich repeats, and Fbxs containing either different protein-protein interaction modules or no recognizable motifs. The protein encoded by this gene belongs to the Fbls class and, in addition to an F-box, contains 12 tandem leucine-rich repeats. Alternatively spliced transcript variants encoding different isoforms have been found for this gene. [provided by RefSeq, Jan 2010]

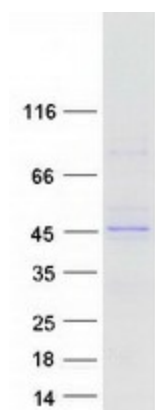
Product images:



Circular map for RC206390



Western blot validation of overexpression lysate (Cat# [LY415925]) using anti-DDK antibody (Cat# [TA50011-100]). Left: Cell lysates from untransfected HEK293T cells; Right: Cell lysates from HEK293T cells transfected with RC206390 using transfection reagent MegaTran 2.0 (Cat# [TT210002]).



Coomassie blue staining of purified FBXL2 protein (Cat# [TP306390]). The protein was produced from HEK293T cells transfected with FBXL2 cDNA clone (Cat# RC206390) using MegaTran 2.0 (Cat# [TT210002]).