

Product datasheet for **RC206389**

CaMKK (CAMKK1) (NM_172207) Human Tagged ORF Clone

Product data:

Product Type:	Expression Plasmids
Product Name:	CaMKK (CAMKK1) (NM_172207) Human Tagged ORF Clone
Tag:	Myc-DDK
Symbol:	CaMKK
Synonyms:	CAMKKA
Mammalian Cell Selection:	Neomycin
Vector:	pCMV6-Entry (PS100001)
E. coli Selection:	Kanamycin (25 ug/mL)



[View online »](#)

ORF Nucleotide Sequence:

>RC206389 ORF sequence
 Red=Cloning site Blue=ORF Green=Tags(s)

TTTTGTAATACGACTCACTATAGGGCGGCCGGAATTCGTGACTGGATCCGGTACCGAGGAGATCTGCC
 GCC**CGGATCGCC**

ATGGAGGGGGTCCAGCTGTCTGCTGCCAGGATCCTCGGCAGAGCTGGTAGAACGGGTGCCAGCCATCG
 ATGTGACTCACTTGGAGGAGGCAGATGGTGGCCAGACCTACTAGAAACGGTGTGGACCCACCACG
 GGCCAGAGCTGCCTCTGTGATCCCTGGCAGTACTTCAAGACTGCTCCAGCCCGCCTAGCCTCTCAGCC
 AGGAAGCTTCCCTACAGGAGCGGCCAGCAGGAAGCTATCTGGAGGCGCAGGCTGGCCCTTATGCCACGG
 GGCCTGCCAGCCACATCTCCCCCGGCCCTGGCGGAGGCCACCATCGAGTCCCACCACGTGGCCATCTC
 AGATGCAGAGGACTGCGTGCAGCTGAACCAGTACAAGTGCAGAGTGAGATTGGCAAGGGTGCCTACGGT
 GTGGTGAAGCTGACAAACGAAAGTGAAGACAGACACTATGCAATGAAAGTCTTTCCAAAAAGAAGT
 TACTGAAGCAGTATGGCTTCCACGTGCGCCTCCCCGAGAGGGTCCCAGGCTGCCAGGGAGGACCAGC
 CAAGCAGCTGCTGCCCTGGAGCGGGTGTACCAGGAGATTGCCATCCTGAAGAAGCTGGACCACGTGAAT
 GTGGTCAAACGATCGAGGCTCTGGATGACCCAGCTGAGGACAACCTCTATTTGGCCCTGCAGAACCAGG
 CCCAGAATATCCAGTTAGATTCAACAAATATCGCCAAGCCCCACTCCCTGCTTCCCTCTGAGCAGCAAGA
 CAGTGGATCCACGTGGGCTGCGCGCTCAGTGTGACCTCCTGAGAAAGGGGCCCGTATGGAAGTGCC
 TGTGACAAGCCCTTCTCGGAGGAGCAAGCTCGCCTCTACCTGCGGACGTCATCCTGGCCCTCGAGTACT
 TGCAGTCCAGAAAGATCGTCCACAGGGACATCAAGCCATCCAACCTGCTCCTGGGGGATGATGGGCACGT
 GAAGATCGCCGACTTTGGCGTCAGCAACCAGTTTGAAGGAAACGACGCTCAGCTGTCCAGCACGGCGGGA
 ACCCCAGCATTTCATGGCCCCGAGGCCATTTCTGATTCCGGCCAGAGCTTCAAGGGAAGGCCTTGGATG
 TATGGGCCACTGGCGTCACGTTGTACTGCTTTGTCTATGGGAAGTGCCCGTTCATCGACATTTTCATCCT
 GGCCCTCCACAGGAAGATCAAGAATGAGCCCGTGGTGTTCCTGAGGGGCCAGAAATCAGCGAGGAGCTC
 AAGGACCTGATCCTGAAGATGTTAGACAAGAATCCCGAGACGAGAATTGGGGTGCCAGACATCAAGTTGC
 ACCCTTGGGTGACCAAGAACGGGGAGGAGCCCTTCTTCCGAGGAGGAGCACTGCAGCGTGGTGGAGGT
 GACAGAGGAGGAGGTTAAGAAGTCAAGTCAAGGCTCATCCCCAGCTGGACCACGGTATCCTGGTGAAGTCC
 ATGCTGAGGAAGCGTTCCTTTGGGAACCCGTTTGGACCCCAAGCAGGAGGGAAGAGCGATCCATGTCTG
 CTCCAGGAAACCTACTGGTG

ACGCGTACGCGGCCGCTCGAGCAGAAACTCATCTCAGAAGAGGATCTGGCAGCAAATGATATCCTGGATT
 ACAAGGATGACGACGATAAGGTTTAA

Protein Sequence:

>RC206389 protein sequence
 Red=Cloning site Green=Tags(s)

MEGGPAVCCQDPRAELVERVAIDVTHLEEADGGPEPTRNGVDPPIPRARAASVIPGSTRLLPARPSLSA
 RKLSLQERPAGSYLEAQAGPYATGPASHISPRARRPTIESHHVAISDAEDCVQLNQYKLQSEIGKGAYG
 VVRLAYNESEDRHYAMKVL SKKLLKQYGFRRPPRGSQAAQGGPAKQLLPLERVYQEIAILKKLDHVN
 VVKLIEVLDDPAEDNLYLALQNAQNIQLDSTNIAKPHSLLPSEQQDSGSTWAARSVFDLLRKGPMVEVP
 CDKPFSEEQARLYLRDVLGLLEYLHCQKIVHRDIKPSNLLL GDDGHVKIADFVSNQFEGNDAQLSSTAG
 TPAFMAPEAISDSGQSFSGKALDVWATGVTL YCFVYGKCPFIDDFILALHRKIKNEPVVFPPEPGEISEEL
 KDLILKMLDKNPETRIGVPDIKHPWVTKNGEELPSEEEHCSVVEVTEEEVKNSVRLIPSWTTVILVKS
 MLRKRSFGNPFEPQARREERSMSAPGNLLV

TRTRPLEQKLISEEDLAANDILDYKDDDDKV

Chromatograms:

https://cdn.origene.com/chromatograms/mk6269_e04.zip

Restriction Sites:

Sgfl-MluI

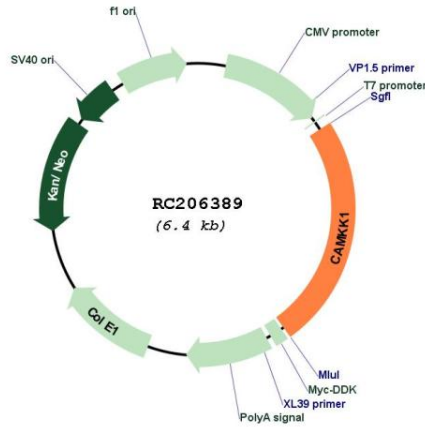
Protein Families: Druggable Genome, Protein Kinase

Protein Pathways: Adipocytokine signaling pathway

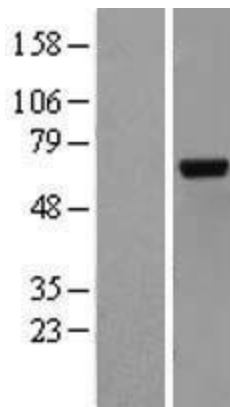
MW: 57.5 kDa

Gene Summary: The product of this gene belongs to the Serine/Threonine protein kinase family, and to the Ca(2+)/calmodulin-dependent protein kinase subfamily. This protein plays a role in the calcium/calmodulin-dependent (CaM) kinase cascade. Three transcript variants encoding two distinct isoforms have been identified for this gene. [provided by RefSeq, Jul 2008]

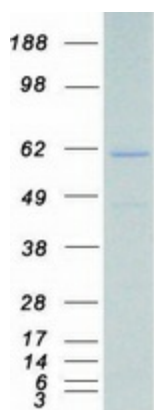
Product images:



Circular map for RC206389



Western blot validation of overexpression lysate (Cat# [LY406738]) using anti-DDK antibody (Cat# [TA50011-100]). Left: Cell lysates from untransfected HEK293T cells; Right: Cell lysates from HEK293T cells transfected with RC206389 using transfection reagent MegaTran 2.0 (Cat# [TT210002]).



Coomassie blue staining of purified CAMKK1 protein (Cat# [TP306389]). The protein was produced from HEK293T cells transfected with CAMKK1 cDNA clone (Cat# RC206389) using MegaTran 2.0 (Cat# [TT210002]).