

Product datasheet for **RC206385**

TMEM25 (NM_032780) Human Tagged ORF Clone

Product data:

Product Type:	Expression Plasmids
Product Name:	TMEM25 (NM_032780) Human Tagged ORF Clone
Tag:	Myc-DDK
Symbol:	TMEM25
Mammalian Cell Selection:	Neomycin
Vector:	pCMV6-Entry (PS100001)
E. coli Selection:	Kanamycin (25 ug/mL)
ORF Nucleotide Sequence:	>RC206385 ORF sequence Red=Cloning site Blue=ORF Green=Tags(s)

TTTTGTAATACGACTCACTATAGGGCGGCCGGAATTCGTCGACTGGATCCGGTACCGAGGAGATCTGCC
GCC**CGATCGCC**

ATGGCGCTGCCTCCAGGCCAGCCGCCCTCCGGCACACTGCTGCTCCTGCCAGCCCTTCTGAGCTCAG
GTTGGGGGGAGTTGGAGCCACAAATAGATGGTCAGACCTGGGCTGAGCGGGCACTTCGGGAGAATGAACG
CCACGCCCTTCACTGCCGGTGGCAGGGGGCCCTGGCACCCCAAGATTGGCCTGGTATCTGGATGGACAG
CTGCAGGAGGCCAGCACCTCAAGACTGCTGAGCGTGGGAGGGGAGGCCTTCTCTGGAGGCCAGCACCT
TCACTGTCACTGCCATCGGGCCAGCATGAGCTCAACTGCTCTCTGCAGGACCCAGAAGTGGCCGATC
AGCCAACGCCTCTGTATCCTTAATGTGCAATCAAGCCAGAGATTGCCCAAGTCGGCGCCAAGTACCAG
GAAGCTCAGGGCCAGGCCTCCTGGTTGTCTGTTTGGCCCTGGTGCCTGCAACCCGCGGCAATGTCA
CCTGGATCGACCAGGATGGGCCAGTACTGTCAACACCTCTGACTTCTGGTGTGGATGCGCAGAACTA
CCCCTGGCTCACCAACCACCGTGCAGCTGCAGCTCCGCAGCCTGGCACACAACCTCTCGGTGGTGGCC
ACCAATGACGTGGGTGTCAACAGTGCCTCGCTTCCAGCCCAAGGCTTCTGGCTACCCGGGTGGAAGTGC
CACTGCTGGGCATTGTTGTGGCTGCTGGGCTTGCAGTGGCCACCCCTCGTGGGGTTACGACCTTGGTGGC
CTGCCTGGTCTGCAGAAAAGAGAAGAAAACCAAGGCCCTCCCGCACCCATCTCTGATATCAAGTGC
TCCAACAACCTAAAACCTCAACAAGTGCCTGCCACGGGAGAACATGTCCCTCCCGTCCAACCTTCAAGC
TCAATGACCTCACTCCAGATTCCAGAGCAGTGAACCAGCAGACCGGCAGATGGCTCAGAACACAGCCG
GCCAGAGCTTCTGGACCCGAGCCCGGGCGCCTCCTCACCAGCCAAGGTTTCATCCGCCTCCAGTGTCTG
GGCTATATCTATCGAGTGTCCAGCGTGAGCAGTGTGAGATCTGGCTC

ACGCGTACGCGGCCGCTCGAGCAGAACTCATCTCAGAAGAGGATCTGGCAGCAAATGATATCCTGGATT
ACAAGGATGACGACGATAAGGTTTAA



[View online »](#)

Protein Sequence: >RC206385 protein sequence
Red=Cloning site Green=Tags(s)

MALPPGPAALRHTLLLLPALLSSGWGELEPQIDGQWAERALRENERHAFTRVAGGPGTPRLAWYLDGQ
 LQEASTSRLLSVGGEAFSGGTSTFTVTAHRAQHELNCSLQDPRSGRSANASVILNVQFKPEIAQVGAKYQ
 EAQGPGLLVLFALVRANPPANVTWIDQDGPVTVNTSDFLVLDAQNYPWLTNHTVQLQLRSLAHLNSVVA
 TNDVGVTSASLPAPGLLATRVEVPLLGIVVAAGLALGTLVGFSTLVAQLVCRKEKKTGKPSRHPSLISSD
 SNNLKLNNVRLPRENMSLPSNLQLNDLTPDSRAVKPADRQMAQNNRSPELLDPEPGLLTSQGFIRLPVL
 GYIYRVSSVSSDEIWL

TRTRPLEQKLISEEDLAANDILDYKDDDDKV

Chromatograms: https://cdn.origene.com/chromatograms/mk6344_f12.zip

Restriction Sites: Sgfl-MluI

Cloning Scheme:

Cloning sites used for ORF Shuttling:



* The last codon before the Stop codon of the ORF

ACCN: NM_032780

ORF Size: 1098 bp

OTI Disclaimer: The molecular sequence of this clone aligns with the gene accession number as a point of reference only. However, individual transcript sequences of the same gene can differ through naturally occurring variations (e.g. polymorphisms), each with its own valid existence. This clone is substantially in agreement with the reference, but a complete review of all prevailing variants is recommended prior to use. [More info](#)

OTI Annotation: This clone was engineered to express the complete ORF with an expression tag. Expression varies depending on the nature of the gene.

Components: The ORF clone is ion-exchange column purified and shipped in a 2D barcoded Matrix tube containing 10ug of transfection-ready, dried plasmid DNA (reconstitute with 100 ul of water).

Reconstitution Method:

1. Centrifuge at 5,000xg for 5min.
2. Carefully open the tube and add 100ul of sterile water to dissolve the DNA.
3. Close the tube and incubate for 10 minutes at room temperature.
4. Briefly vortex the tube and then do a quick spin (less than 5000xg) to concentrate the liquid at the bottom.
5. Store the suspended plasmid at -20°C. The DNA is stable for at least one year from date of shipping when stored at -20°C.

RefSeq: [NM_032780.4](#)

RefSeq Size: 2551 bp

RefSeq ORF: 1101 bp

Locus ID: 84866

UniProt ID: [Q86YD3](#)

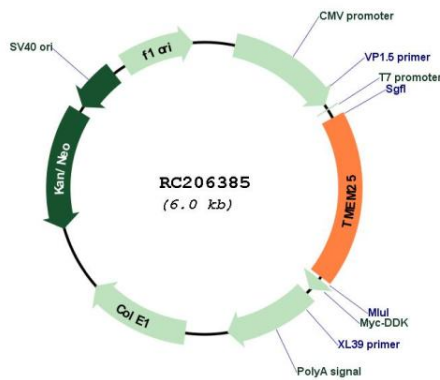
Cytogenetics: 11q23.3

Protein Families: Transmembrane

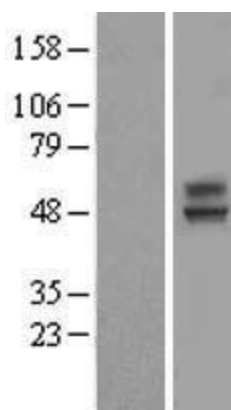
MW: 39.3 kDa

Gene Summary: In neurons, modulates the degradation of NMDA receptor GRIN2B subunit. Plays a role in the regulation of neuronal excitability.[UniProtKB/Swiss-Prot Function]

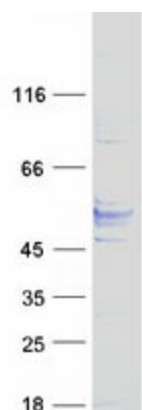
Product images:



Circular map for RC206385



Western blot validation of overexpression lysate (Cat# [LY409928]) using anti-DDK antibody (Cat# [TA50011-100]). Left: Cell lysates from untransfected HEK293T cells; Right: Cell lysates from HEK293T cells transfected with RC206385 using transfection reagent MegaTran 2.0 (Cat# [TT210002]).



Coomassie blue staining of purified TMEM25 protein (Cat# [TP306385]). The protein was produced from HEK293T cells transfected with TMEM25 cDNA clone (Cat# RC206385) using MegaTran 2.0 (Cat# [TT210002]).