

## Product datasheet for **RC206382**

### **C12orf34 (FAM222A) (NM\_032829) Human Tagged ORF Clone**

#### **Product data:**

Product Type:	Expression Plasmids
Product Name:	C12orf34 (FAM222A) (NM_032829) Human Tagged ORF Clone
Tag:	Myc-DDK
Symbol:	C12orf34
Synonyms:	C12orf34
Mammalian Cell Selection:	Neomycin
Vector:	pCMV6-Entry (PS100001)
E. coli Selection:	Kanamycin (25 ug/mL)



[View online »](#)

**ORF Nucleotide Sequence:**

>RC206382 ORF sequence  
 Red=Cloning site Blue=ORF Green=Tags(s)

TTTTGTAATACGACTCACTATAGGGCGGCCGGGAATTCGTCGACTGGATCCGGTACCGAGGAGATCTGCC  
 GCC**CGATCGCC**

ATGCTGGCCTGTCTGCAGAGACCAGAACGCCCGGCCAACACCTGGCCTGCCGAGCAAGAGCCTGG  
 AGCTGCGCAAGTGCAGGCGGTGCCAGCGCCATGCATTCTCCCGCTACCCGAGCCAGCAGAAGTGG  
 CGCCTATGCCGAGAAGGTGGCCAACAGCCCGCTGTCCATCAAGATCTTCCCCACCAACATCCGTGTGCC  
 CAGCACAAGCACCTCAGCCGCACAGTCAATGGCTATGACACCAGTGGCCAGCGCTACAGCCCTACCCAC  
 AGCACACCGCTGGCTACCAGGCGCTTCTGGCCATTGTCAAGGCCGCGGTTTCTCTCCAGCAGGCCGC  
 ACCAGCTGGGCCCGCCAAAAGTGTGCTCAAGAGCGCCGAGGGCAAGCGGACCAAGCTGTACCGGCCGC  
 GTGCAGGTGGCATTGCGCCCTACCCAGTGCCAGCACTCTGGGTCCTTGGCTACCCCAAGCCACCTG  
 AGGCGCTGCTCCACCACCGGCTGCCCGCAGCCGCACTGCCGCTCCGTATCCCCCTGCCGGGCCG  
 GGGCTGCCCTGCCACCTTCCAACCTGCCCTCCATCCACAGCCTCCTGTACCAGCTCAACCAGCAGTGC  
 CAGGCCCCGGGCCCGCCACCCCTGCCTGCCAGGGCATGGCTATCCCCATCCCAGCCCTGCCAAGCAG  
 GCCAGTGCCAGCTTCCCCAGCATGGCCTACTCGGCTGCAGCCGGTCTGCCGACTGCCGAAAGGCAC  
 TGAGCTGGGCCAGGGAGCCACCAAGCCTTGACGTTGGCTGGGGCCGCAAGCCTGCAGGGTACGCAGAC  
 AGCGGCTGGATTACCTGCTGTGGCCGAGAAACCGCCCCACCGCCGCCAGCCACTGCGTGCCCTACA  
 GTGGGAGCACGGTGGCCAGCAAGTCCCTGAGGCTTGCAGGGGCCGGGCATACGAGCGGGCCAGCGGGT  
 ACCCTCAACTGTGGCGTGGGCTGCCACCAGCTTACCGTAGGCCAGTACTTTGGGCCCCGTGGAAC  
 AGTGTGCTGGTGACACCACAGCAGTGTACAACCCAGCGGCGGGTGGTGGTACGGAGCTGGGGC  
 CGGGGCGAGCCGGGAGCTGGCTGGGCCCTGCAGATGCCCTCTCGGGCCTGCCAGAGAGTGTGTG  
 CAACACATCGGTGCTGAGCAGCAGCCTGCAGTCACTGGAGTATCTCATCAACGACATCCGGCCGCTGC  
 ATCAAGGAGCAGATGCTGGGCAAGGGCTATGAGACGGTGGCCGTGCCCGGCTACTCGACCACAGCATG  
 CCCACATCCGCTACCCGTCTACAGA

**ACGCGT**ACGCGGCCGCTCGAGCAGAACTCATCTCAGAAGAGGATCTGGCAGCAATGATATCTGGATT  
 ACAAGGATGACGACGATAAGGTTTAA

**Protein Sequence:**

>RC206382 protein sequence  
 Red=Cloning site Green=Tags(s)

MLACLQRTQNAPGQHLACPSKSLELRKCEAVASAMHSSRYPSAELDAYAEKVANSPLSIKIFPTNIRVP  
 QHKHLSRTVNGYDTSGQRYSPYPQHTAGYQGLLAIVKAAVSSSTAAPAGPAKSVLKSAEGKRTKLS  
 VQVGIAPYVPVSTLGPLAYPKPEAPAPPGLPAAATAASVIPLPGRGLPLPPSNLPSIHSLLYQLNQCC  
 QAPGAAPPACQGMaipHPSPAKHGPVPSFSPMAYSAAGLPDCRKGTELQGATQALTLAGAAKPAGYAD  
 SGLDYLLWPQKPPPPPLRAYSGSTVASKSPEACGGRAYERASGSPLNCGVGLPTSFVTGQYFAAPWN  
 SVLVPTSDCYNPAAAVVTELGPAAARELAGPPADALSGLPSKSVCNLSVLSLQSLLEYLINDIRPPC  
 IKEQMLGKGYETVAVPRLLDHQHAHIRLPVYR

**TR**TRPLEQKLISEEDLAANDILDYKDDDDKV

**Chromatograms:**

[https://cdn.origene.com/chromatograms/mk6379\\_b12.zip](https://cdn.origene.com/chromatograms/mk6379_b12.zip)

**Restriction Sites:**

Sgfl-Mlul

**Cloning Scheme:**


**ACCN:** NM\_032829

**ORF Size:** 1356 bp

**OTI Disclaimer:** The molecular sequence of this clone aligns with the gene accession number as a point of reference only. However, individual transcript sequences of the same gene can differ through naturally occurring variations (e.g. polymorphisms), each with its own valid existence. This clone is substantially in agreement with the reference, but a complete review of all prevailing variants is recommended prior to use. [More info](#)

**OTI Annotation:** This clone was engineered to express the complete ORF with an expression tag. Expression varies depending on the nature of the gene.

**Components:** The ORF clone is ion-exchange column purified and shipped in a 2D barcoded Matrix tube containing 10ug of transfection-ready, dried plasmid DNA (reconstitute with 100 ul of water).

- Reconstitution Method:**
1. Centrifuge at 5,000xg for 5min.
  2. Carefully open the tube and add 100ul of sterile water to dissolve the DNA.
  3. Close the tube and incubate for 10 minutes at room temperature.
  4. Briefly vortex the tube and then do a quick spin (less than 5000xg) to concentrate the liquid at the bottom.
  5. Store the suspended plasmid at -20°C. The DNA is stable for at least one year from date of shipping when stored at -20°C.

**RefSeq:** [NM\\_032829.3](#)

**RefSeq Size:** 3183 bp

**RefSeq ORF:** 1359 bp

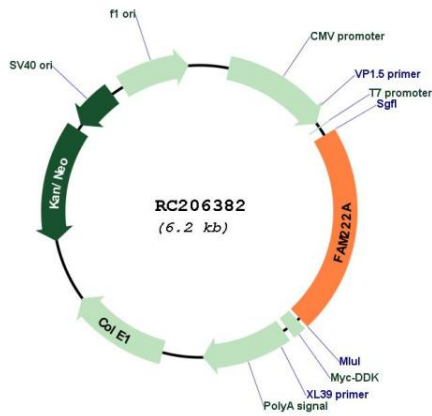
**Locus ID:** 84915

**UniProt ID:** [Q5U5X8](#)

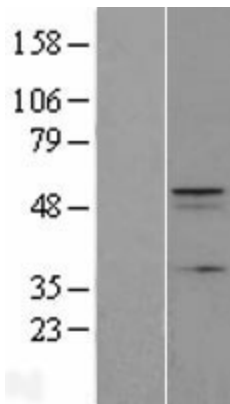
**Cytogenetics:** 12q24.11

MW: 46.8 kDa

**Product images:**



Circular map for RC206382



Western blot validation of overexpression lysate (Cat# [LY409917]) using anti-DDK antibody (Cat# [TA50011-100]). Left: Cell lysates from untransfected HEK293T cells; Right: Cell lysates from HEK293T cells transfected with RC206382 using transfection reagent MegaTran 2.0 (Cat# [TT210002]).