

## Product datasheet for RC206380

### LRRC2 (NM\_024750) Human Tagged ORF Clone

#### Product data:

Product Type:	Expression Plasmids
Product Name:	LRRC2 (NM_024750) Human Tagged ORF Clone
Tag:	Myc-DDK
Symbol:	LRRC2
Synonyms:	leucine-rich repeat-containing 2; leucine rich repeat containing 2
Mammalian Cell Selection:	Neomycin
Vector:	pCMV6-Entry (PS100001)
E. coli Selection:	Kanamycin (25 ug/mL)
ORF Nucleotide Sequence:	>RC206380 ORF sequence Red=Cloning site Blue=ORF Green=Tags(s)

TTTTGTAATACGACTCACTATAGGGCGCCGGGAATTCGTCGACTGGATCCGGTACCGAGGAGATCTGCC  
GCC**CGATCGCC**

ATGGGACATAAAGTGTTGTCTTCGACATTTCTGTCATCAGAGCCTTGTGGGAACTCGTGTCAAGAAGC  
ACAAAGCTTGGCAGAAGAAGGAGGTGAAAGGCTTGAGAAGAGCGCCTTGGAGAAGATAAAGGAGGAGTG  
GAACTTTGTGGCCGAATGCAGGAGGAAGGGCATCCCCAGGCTGTATACTGCAAGAATGGCTTCATAGAC  
ACCAGCGTGCGGCTTCTGGACAAGATTGAAAGGAACACTCTACAAGGCAGAGTTCACCTCCAAGGACA  
GAGGCAAACGGAGCAGTGCCTTTGTGTTGAACTTTCTGGGGAGCACTGGACGGAGCTCCAGATTCATT  
GAAGGAGCAGACACCTGAGAGAATGGTACATAAGCAATACCTTGATTCAAATCATTCTCATATATT  
CAGTTATTTCAAGCGATGAGAATTCTGGATCTGCCAAAAACCAATCTCACATCTTCCAGCAGAAATCG  
GTTGTTTGAAGAACCTGAAAGAACTCAATGTGGGTTTCAACTATCTGAAGAGCATTCTCCAGAATTGGG  
AGATTGTGAAAATCTAGAGAGACTGGATTGTTCTGGAAATCTAGAATTAATGGAGCTGCCCTTTGAATTA  
AGTAATTTGAAGCAAGTTACATTTGTAGATATCTCAGCAAACAAGTTTCCAGTGTCCCAATCTGTGTCC  
TGCGGATGTCGAATTTGCAGTGGTTGGATATCAGCAGCAATAACCTGACCGACCTGCCGCAAGATATAGA  
CAGGCTAGAGGAGCTGCAGAGCTTCTCTGTATAAAAAACAAGTTGACCTACCTCCCTATTCCATGCTG  
AACCTGAAGAAGCTCACTCTGTTAGTCAGTGGGGACCATTTGGTGGAGCTCCCAACTGCCCTTTGTG  
ACTCATCCACACCTTTAAAATTTGTAAGCCTTATGGACAATCCTATTGATAATGCCCAATGTGAAGATGG  
CAATGAAATAATGAAAGTGAACGGGATCGCCAACATTTTGATAAAGAAGTTATGAAAGCCTATATTGAA  
GACCTTAAAGAAAGAGAATCTGTTCCAGCTATACCACCAAAGTGTCTTTTAGCCTTCAACTT

**ACGCGT**ACGCGGCCGCTCGAGCAGAAACTCATCTCAGAAGAGGATCTGGCAGCAATGATATCCTGGATT  
ACAAGGATGACGACGATAAGGTTTAA



[View online »](#)

**Protein Sequence:** >RC206380 protein sequence  
Red=Cloning site Green=Tags(s)

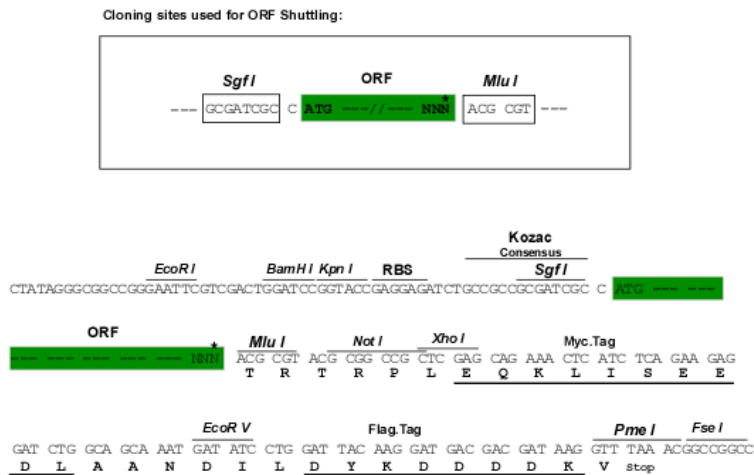
MGHKVVVFDISVIRALWETRVKKHKAQKKEVERLEKSALEKIKEEWNFVAECRRKGIPQAVYCKNGFID  
 TSVRLLDKIERNTLTRQSSLPKDRGKRSSAFVVELSGEHWTELPDSLKEQTHLREWYISNTLIQIIPYI  
 QLFQAMRILDL PKNQISHLPAEIGCLKNLKELVGFNYLKSIPPELGDCENLERLDCSGNLELMELPFEL  
 SNLKQVTFVDISANKFSSVPICVLRMSNLQWLDISSNNLTDLPQDIDRLEELQSFLLYKNKLTYPYSML  
 NLKKLTLVVSGDHLVELPTALCDSSTPLKFVSLMDNPIDNAQCEDGNEIMESERDRQHFDKEVMKAYIE  
 DLKERESVPSYTTKVSFSLQL

TRTRPLEQKLISEEDLAANDILDYKDDDDKV

**Chromatograms:** [https://cdn.origene.com/chromatograms/mk6329\\_f11.zip](https://cdn.origene.com/chromatograms/mk6329_f11.zip)

**Restriction Sites:** SgfI-MluI

**Cloning Scheme:**



\* The last codon before the Stop codon of the ORF

**ACCN:** NM\_024750

**ORF Size:** 1113 bp

**OTI Disclaimer:** The molecular sequence of this clone aligns with the gene accession number as a point of reference only. However, individual transcript sequences of the same gene can differ through naturally occurring variations (e.g. polymorphisms), each with its own valid existence. This clone is substantially in agreement with the reference, but a complete review of all prevailing variants is recommended prior to use. [More info](#)

**OTI Annotation:** This clone was engineered to express the complete ORF with an expression tag. Expression varies depending on the nature of the gene.

**Components:** The ORF clone is ion-exchange column purified and shipped in a 2D barcoded Matrix tube containing 10ug of transfection-ready, dried plasmid DNA (reconstitute with 100 ul of water).

**Reconstitution Method:**

1. Centrifuge at 5,000xg for 5min.
2. Carefully open the tube and add 100ul of sterile water to dissolve the DNA.
3. Close the tube and incubate for 10 minutes at room temperature.
4. Briefly vortex the tube and then do a quick spin (less than 5000xg) to concentrate the liquid at the bottom.
5. Store the suspended plasmid at -20°C. The DNA is stable for at least one year from date of shipping when stored at -20°C.

**RefSeq:** [NM\\_024750.3](#)

**RefSeq Size:** 4909 bp

**RefSeq ORF:** 1115 bp

**Locus ID:** 79442

**Cytogenetics:** 3p21.31

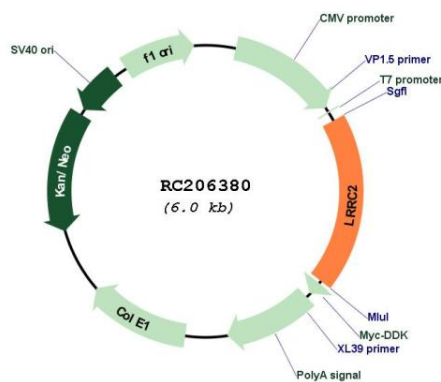
**Domains:** LRR, LRR\_TYP, LRR\_PS

**Protein Families:** Druggable Genome

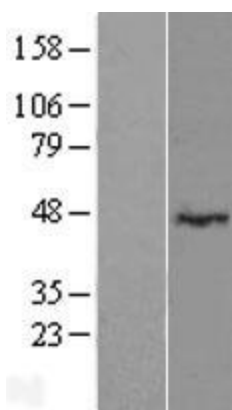
**MW:** 42.9 kDa

**Gene Summary:** This gene encodes a member of the leucine-rich repeat-containing family of proteins, which function in diverse biological pathways. This family member may possibly be a nuclear protein. Similarity to the RAS suppressor protein, as well as expression down-regulation observed in tumor cells, suggests that it may function as a tumor suppressor. The gene is located in the chromosome 3 common eliminated region 1 (C3CER1), a 1.4 Mb region that is commonly deleted in diverse tumors. A related pseudogene has been identified on chromosome 2. [provided by RefSeq, Sep 2011]

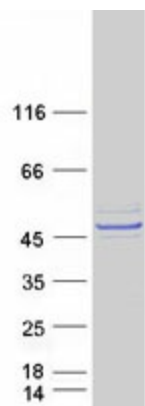
### Product images:



Circular map for RC206380



Western blot validation of overexpression lysate (Cat# [LY411257]) using anti-DDK antibody (Cat# [TA50011-100]). Left: Cell lysates from untransfected HEK293T cells; Right: Cell lysates from HEK293T cells transfected with [RC216196] using transfection reagent MegaTran 2.0 (Cat# [TT210002]).



Coomassie blue staining of purified LRRC2 protein (Cat# [TP306380]). The protein was produced from HEK293T cells transfected with LRRC2 cDNA clone (Cat# RC206380) using MegaTran 2.0 (Cat# [TT210002]).