

Product datasheet for **RC206378**

BPIL1 (BPIFB2) (NM_025227) Human Tagged ORF Clone

Product data:

Product Type:	Expression Plasmids
Product Name:	BPIL1 (BPIFB2) (NM_025227) Human Tagged ORF Clone
Tag:	Myc-DDK
Symbol:	BPIL1
Synonyms:	BPIL1; C20orf184; dj726C3.2; LPLUNC2; RYSR
Mammalian Cell Selection:	Neomycin
Vector:	pCMV6-Entry (PS100001)
E. coli Selection:	Kanamycin (25 ug/mL)



[View online »](#)

ORF Nucleotide Sequence:

>RC206378 ORF sequence
 Red=Cloning site Blue=ORF Green=Tags(s)

TTTTGTAATACGACTCACTATAGGGCGGCCGGAATTCGTCGACTGGATCCGGTACCGAGGAGATCTGCC
 GCCGCGATCGCC

ATGGCTTGGGCAAGTAGGCTGGGCTGCTGCTGGCACTGCTGCTGCCCGTGGTTCGGTGCCTCCACGCCAG
 GCACCGTGGTCCGACTCAACAAGGCAGCATTGAGCTACGTGTCTGAAATTGGGAAAGCCCTCTCCAGCG
 GGCCCTGCAGGCTACTGTCCCTCATTTCCTGGACTGGAGTGGAGAGGCGCTTCAGCCCACCAAGGATCCGG
 ATTCTGAATGTCCATGTGCCCGCCTCCACCTGAAATTCATTGCTGGTTTCGGAGTGCAGCTGCTGGCAG
 CAGCTAATTTTACTTTCAAGGTCTTTTCGCGCCCAAGAGCCCTGGAGCTGACGCTGCCTGTGGAAGTGT
 GGCTGACACCCGCGTGACCCAGAGCTCCATCAGGACCCCTGTGGTGCAGCATCTCTGCCTGCTTTTATTC
 TCGGGCCACGCCAACGAGTTTGATGGCAGTAACAGCACCTCCACGCGCTGCTGGTCTGGTGCAGAAGC
 ACATTAAGCTGTCTTGAGTAACAAGCTGTGCCTGAGCATCTCCAACCTGGTGCAGGGTGTCAATGTCCA
 CCTGGGCACCTTAATTGGCTCAACCCCGTGGGTCTGAGTCCCAGATCCGCTATTCCATGGTCAAGTGTG
 CCCACTGTCACCAAGTACTACATTTCCCTGGAAGTCAATGCTGTTCTTCTCCTGCTGGGCAAGCCATCA
 TCCTGCCACGGATGCCACCCCTTTTGTGTTGCCAAGGCATGTGGGTACCGAGGGCTCCATGGCCACCGG
 GGGCTCTCCAGCAGCTGTTTACTCTGCGCTCCTGCTGCTGCAGAAGGCCGGTGCCTCAACCTGGAC
 ATCACAGGGCAGCTGAGGTCCGATGACAACCTGCTGAACACCTCTGCTCTGGGCCGGTCAATCCCGGAGG
 TGGCCCGCAGTTTCCCGAGCCCATGCCTGTGGTGTCAAGGTGCGGCTGGGTGCCACACCTGTGGCCAT
 GCTCCACACAAACAACGCCACCTGCGGCTGCAGCCCTTCGTGGAGTCTGGCCACAGCCTCCAACCTCG
 GCTTTCCAGTCCCTCTTCTCCCTGGATGTGGTAGTGAACCTGAGACTCCAGCTCTCTGTGTTCAAGGTGA
 AGCTTCAGGGGACCACGCTGTGCTGGGGATGTCCAGCTCACGGTGGCCTCCTCCAAGTGGGCTTCA
 TGATACAGATCAGGTGCGCACACTGATGGGCACCGTTTTTGAAGAAGCCCTGCTGGACCATCTCAATGCT
 CTCTTGGCCATGGGAATTGCCCTCCCTGGTGTGGTCAACCTCCACTATGTCGCCCTGAGATCTTTGTCT
 ATGAGGGTACTGTTGATATCCAGTGGACTCTTCTACCAGAGC

ACGCGTACGCGGCCGCTCGAGCAGAACTCATCTCAGAAGAGGATCTGGCAGCAAATGATATCCTGGATT
 ACAAGGATGACGACGATAAGGTTTAA

Protein Sequence:

>RC206378 protein sequence
 Red=Cloning site Green=Tags(s)

MAWASRLGLLLALLLPVVGASTPGTVVRLNKAALSYVSEIGKAPLQRALQVTVPHFLDWSGEALQPTRIR
 ILNVHVPRLHLKFIAGFGVRLAAANFTFKVFRAPPELELTLPVELLADTRVTQSSIRTPVVISACSLF
 SGHANEFDGSNSTSHALLVLVQKHIAKAVLSNKLCLISINLVQGVNVHLGTLIGLNPVGPESQIRYSMVS
 PTVTSDYISLEVNAVLFLLGKPIILPTDTPFVLPVHVGTEGSMATGGLSQQLFDSALLLQKAGALNLD
 ITGQLRSDNLLNTSALGRLIPEVARQFPEPMPVVLKVRGATPVAMLHTNNTLRLQPFVEVLATASNS
 AFQSLFSLDVVNLRLQLSVSKVKLQGTTSVLGDVQLTVASSNVGFIDTDQVRTLMTGTFEKLPLDHLNA
 LLAMGIALPGVVNLHYVAPEIFVYEGYVVISSGLFYQS

TRTRPLEQKLISEEDLAANDILDYKDDDDKV

Chromatograms:

https://cdn.origene.com/chromatograms/mk6519_f11.zip

Restriction Sites:

Sgfl-Mlul

Cloning Scheme:


ACCN: NM_025227

ORF Size: 1374 bp

OTI Disclaimer: The molecular sequence of this clone aligns with the gene accession number as a point of reference only. However, individual transcript sequences of the same gene can differ through naturally occurring variations (e.g. polymorphisms), each with its own valid existence. This clone is substantially in agreement with the reference, but a complete review of all prevailing variants is recommended prior to use. [More info](#)

OTI Annotation: This clone was engineered to express the complete ORF with an expression tag. Expression varies depending on the nature of the gene.

Components: The ORF clone is ion-exchange column purified and shipped in a 2D barcoded Matrix tube containing 10ug of transfection-ready, dried plasmid DNA (reconstitute with 100 ul of water).

Reconstitution Method:

1. Centrifuge at 5,000xg for 5min.
2. Carefully open the tube and add 100ul of sterile water to dissolve the DNA.
3. Close the tube and incubate for 10 minutes at room temperature.
4. Briefly vortex the tube and then do a quick spin (less than 5000xg) to concentrate the liquid at the bottom.
5. Store the suspended plasmid at -20°C. The DNA is stable for at least one year from date of shipping when stored at -20°C.

RefSeq: [NM_025227.3](#)

RefSeq Size: 1936 bp

RefSeq ORF: 1377 bp

Locus ID: 80341

UniProt ID: [Q8N4F0](#)

Cytogenetics: 20q11.21

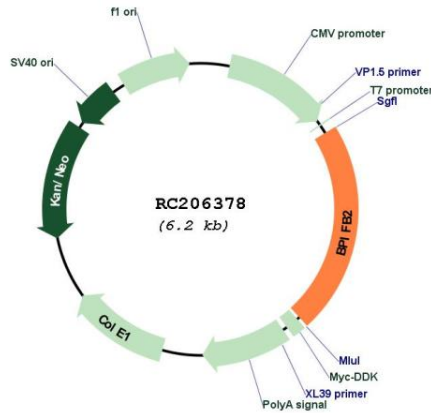
Domains: BPI1

Protein Families: Druggable Genome, Secreted Protein, Transmembrane

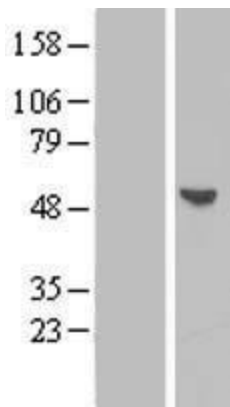
MW: 49.1 kDa

Gene Summary: This gene encodes a member of the lipid transfer/lipopolysaccharide binding protein (LT/LBP) gene family. It is highly expressed in hypertrophic tonsils. This gene and three other members of the LT/LBP gene family form a cluster on the long arm of chromosome 20. [provided by RefSeq, Jul 2008]

Product images:



Circular map for RC206378



Western blot validation of overexpression lysate (Cat# [LY410773]) using anti-DDK antibody (Cat# [TA50011-100]). Left: Cell lysates from untransfected HEK293T cells; Right: Cell lysates from HEK293T cells transfected with RC206378 using transfection reagent MegaTran 2.0 (Cat# [TT210002]).