

Product datasheet for **RC206374**

CTL5 (SLC44A5) (NM_152697) Human Tagged ORF Clone

Product data:

Product Type:	Expression Plasmids
Product Name:	CTL5 (SLC44A5) (NM_152697) Human Tagged ORF Clone
Tag:	Myc-DDK
Symbol:	CTL5
Synonyms:	CTL5
Mammalian Cell Selection:	Neomycin
Vector:	pCMV6-Entry (PS100001)
E. coli Selection:	Kanamycin (25 ug/mL)



[View online »](#)

ORF Nucleotide Sequence:

>RC206374 ORF sequence
 Red=Cloning site Blue=ORF Green=Tags(s)

TTTTGTAATACGACTCACTATAGGGCGGCCGGAATTCGTCGACTGGATCCGGTACCGAGGAGATCTGCC
 GCC**GCGATCGCC**

ATGAATGACACAGAAAAACCAGCAGATACTCCCTCTGAGGAAGAGGACTTTGGTGTCCAAGGACATATG
 ACCCAGATTTCAAGGGGCTGTTGCCAACAGGAGTTGTACAGATGTTCTGTGCTGTATGATCTTCCCTACT
 GTGTATTATTGGCTACATTGTTTTAGGACTTGTGGCCTGGGTACATGGGGACCCAGAAGAGCAGCCTAT
 CCTACAGACAGCCAGGGCCACTTTTGTGGCCAGAAGGGCACTCCCAATGAGAACAAGACCATTTTGT
 ACTTTAACCTGTTACGCTGTACCAGTCCCTCCGATTGCTAAACCTACAGTGCCCTACCACACAGATCTG
 TGTCTCCAAGTGCCAGAAAAATTTTAACTATGTGAAATGCAACTTTTGTACACAAAAGACAAAAGC
 TACTGGGAAGACTACCGTCAGTTCTGTAAGACCACTGCTAAGCCTGTGAAGTCTCTCACACAGCTTTTAC
 TGGATGATGATTGTCCAACAGCGATTTTCCCAGCAAACCTTTTCTCCAGAGATGTTTCCCTGACTTCTC
 TACCAAAAATGGCACTTTAACAATAGGAAGTAAGATGATGTTTCAAGATGGAAATGGAGGGACAAGAAGT
 GTTGTAGAAGTACCGGATTGCTGCAAATGGTATCAATAAACTTCTTGATGCAAAGTCACTTGGATTGAAAG
 TGTTTGAAGACTATGCAAGAAGTGGTATTGGATTCTCATTGGCCTGACGATTGCCATGGTCCCTAGTTG
 GATATTTTGTACTTCTGAGGTTTCATAGCTGGATGCCTCTTCTGGGCTTTCATGATTGGTGTGATTGGA
 ATTATAGGTTATGGAATATGGCACTGTTACCAGCAGTACACCAATCTTACAGGAACGCCCAAGTTCTGTAT
 TAACTATCTATGACATCGGGATTCAGACTAACATAAGCATGTACTTTGAACTGCAACAAACATGGTTCAC
 ATTTATGATAACTCTGCATCATTGAAGTGATTGTATCCTCATGCTGATCTTCTCAGGAATCGAATC
 CGAGTCGCCATTATCCTGCTGAAGGAAGGAAGCAAAGCCATTGGATATGTTCTTAGTACATTAGTCTATC
 CAGCTTTAACTTTGATTTTGTCTCAATCTGCATTTGCTACTGGGTCGTGACAGCAGTTTTCTTGGCGAC
 ATCGGGGGTACCTGTATACAAAGTCATAGCTCCAGGGGGGCATTGTATACATGAAAAATCAAACCTGTGAC
 CCAGAGATTTTTAATACTGAAATGGCAAAGCTTGCCTGGGGCTCTGTGAACTTTGCTTTCTATG
 GTGAAAGAGCTTGTACCATCAGTACATCCCTACCTTCCATGTATACAACTTATTTGTCTTTCTCTGGCT
 TATAAACTTCGTCATTGCATTAGGTCAGTGCGCCCTTGTGGTGCATTGCTACTTATTACTGGGCCATG
 AAAAAACCTGATGACATCCACGATATCCACTTTTACTGCATTTGGACGAGCCATACGATATCACACAG
 GATCCCTAGCATTGGATCTTTAATTATTGCATTAATTCAAATGTTTAAAATTGACTAGAATACTTGA
 CCACCGTCTTAAACGTACCCAGAACACATTGTCTAAATCCTACAGTGCCTGAGATGCTGCTTCTGG
 TGTTTGGAAAATGCAATAAAGTTTTTAAACAGAAATGCCTATATTATGATTGCAATATATGGCAGAACT
 TCTGCAGTCAAGAAAAGATGCTTCAATCTGCTGATGAGAAATGTTTGAAGTTGCAGTTACAGATGA
 AGTTACATACTTTGATTTTCTGGGGAACTTCTAGTTGCTGGAAGTATAGGTGTTCTGGCCTTCCCTA
 TTCTTACACAAAAGACTGCCAGTGATTGCACAAGGACCAGCATCTTTATATTACTACTGGGTACCTTTGC
 TGACAGTCATTTTGGTCTTACCTGATTGCACATGGGTCTTTCAGCGTCTATGCAATGTGTGTTGAAAC
 AATTTTCATCTGCTTCTGTGAAGATCTGGAAAGAAATGATGGATCCACAGAAAAACCTACTTCTGAACC
 CCTAACCTGCATGGAATTCTGATCAAGAAGCAACTAGTCCCCAGAAGCAGAAAGAG

ACGCGTACGCGGCCGCTCGAGCAGAACTCATCTCAGAAGAGGATCTGGCAGCAAATGATATCCTGGATT
 ACAAGGATGACGACGATAAGGTTTAA

Protein Sequence: >RC206374 protein sequence
Red=Cloning site Green=Tags(s)

```
MNDTEKPADTPSEEEFDGDPRTYDPDFKGPVANRSCDVLCCMIFLLCIIGYIVLGLVAWVHGDPRAAY
PTDSQGHFCGQKGPENKILFYFNLLRCTSPSVLLNLQCPTTQICVSKCPEKFLTYVEMQLLYTKDKS
YWEDYRQFCCKTTAKPVKSLTQLLLDDDCPTAIFPSKPFLLQRCFPDFSTKNGTLTIGSKMMFQDNGGTRS
VVELGIAANGINKLLDAKSLGLKVFEDYARTWYWILIGLTIAMVLSWIFLILLRFIAGCLFWVFMIGVIG
IIGYGIWHCYQQYTNLQERPSSVLTIIDIGIQTNISMYFELQQTWFTFMIILCIEVIVILMLIFLRNRI
RVAIILLKEGSKAIGYVPSTLVYPALTFILLSICICYWVVTAVFLATSGVPVYKVIAPGGHCIHENQTC
PEIFNTTEIAKACPGALCNFAFYGGKSLYHQYIPTFHVYNLFVFLWLINFVIALGQCALAGAFATYYWAM
KKPDDIPRYPLTAFGRAIRYHTGSLAFGSLIIALIQMFKIVLEYLDHRLKRTQNTLSKFLQCCLRCCFW
CLENAIKFLNRNAYIMIAIYGRNFCRSKADAFNLLMRNVLKVAVTDEVTYFVFLGKLLVAGSIGVLAFL
FFTQRLPVIAQGPASLYYYWVPLLVIFGSYLIAHGFFSVYAMCVETIFICFCEDLERNDGSTEKPYFVT
PNLHGILIKKQLVPQKQKE
```

TRTRPLEQKLISEEDLAANDILDYKDDDDKV

Chromatograms: https://cdn.origene.com/chromatograms/mk6695_c12.zip

Restriction Sites: SgfI-MluI

Cloning Scheme:

Cloning sites used for ORF Shuttling:



* The last codon before the Stop codon of the ORF

ACCN: NM_152697

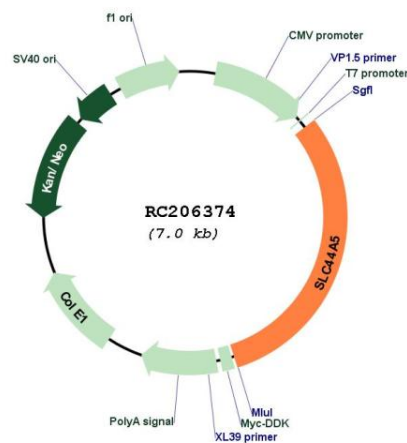
ORF Size: 2157 bp

OTI Disclaimer: The molecular sequence of this clone aligns with the gene accession number as a point of reference only. However, individual transcript sequences of the same gene can differ through naturally occurring variations (e.g. polymorphisms), each with its own valid existence. This clone is substantially in agreement with the reference, but a complete review of all prevailing variants is recommended prior to use. [More info](#)

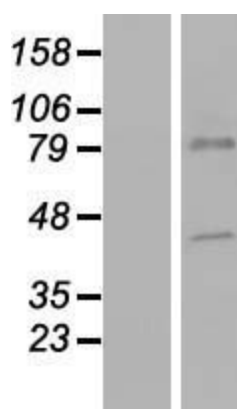
OTI Annotation: This clone was engineered to express the complete ORF with an expression tag. Expression varies depending on the nature of the gene.

Components:	The ORF clone is ion-exchange column purified and shipped in a 2D barcoded Matrix tube containing 10ug of transfection-ready, dried plasmid DNA (reconstitute with 100 ul of water).
Reconstitution Method:	<ol style="list-style-type: none">1. Centrifuge at 5,000xg for 5min.2. Carefully open the tube and add 100ul of sterile water to dissolve the DNA.3. Close the tube and incubate for 10 minutes at room temperature.4. Briefly vortex the tube and then do a quick spin (less than 5000xg) to concentrate the liquid at the bottom.5. Store the suspended plasmid at -20°C. The DNA is stable for at least one year from date of shipping when stored at -20°C.
RefSeq:	NM_152697.3
RefSeq Size:	2521 bp
RefSeq ORF:	2160 bp
Locus ID:	204962
UniProt ID:	Q8NCS7
Cytogenetics:	1p31.1
Domains:	DUF580
Protein Families:	Transmembrane
MW:	81.7 kDa

Product images:



Circular map for RC206374



Western blot validation of overexpression lysate (Cat# [LY407326]) using anti-DDK antibody (Cat# [TA50011-100]). Left: Cell lysates from untransfected HEK293T cells; Right: Cell lysates from HEK293T cells transfected with RC206374 using transfection reagent MegaTran 2.0 (Cat# [TT210002]).