

## Product datasheet for **RC206373**

### SHC4 (NM\_203349) Human Tagged ORF Clone

#### Product data:

Product Type:	Expression Plasmids
Product Name:	SHC4 (NM_203349) Human Tagged ORF Clone
Tag:	Myc-DDK
Symbol:	SHC4
Synonyms:	RaLP; SHCD
Mammalian Cell Selection:	Neomycin
Vector:	pCMV6-Entry (PS100001)
E. coli Selection:	Kanamycin (25 ug/mL)



[View online »](#)

**ORF Nucleotide Sequence:**

>RC206373 ORF sequence  
 Red=Cloning site Blue=ORF Green=Tags(s)

TTTTGTAATACGACTCACTATAGGGCGGCCGGAATTCGTCGACTGGATCCGGTACCGAGGAGATCTGCC  
 GCC**CGGATCGCC**

ATGCGAGAACCGGCCAGGACAGCCTGGCAGGACTCGTGTGTATGTAGGACTCTTCGGGCACCCGGGA  
 TGCTGCACAGGGCCAAGTACAGCCGCTTTCGGAACGAGTGCATCAGTCCTTGGACGAAGGTAGCTCCGG  
 AGGCTCGGTGGGGACAAGGGCTCGCCGACGCTCCCCACCCGCGCTGGCACCTCACCTGCCGACTGAA  
 GATGCCACCTTGCCGTCGAGGAGAGCCCCACCCACTGTGCACCTTGATCCCCGCATGGCAAGCATGA  
 AGCTGGCCAACCCGGCCACTTTGCTGAGTCTGAAAACTTTTGCCTGGGTACCAAAGAGGTGCCTCGGT  
 GAAGCTCCAGGAAAGCCGGGACCCAGGTTCCAGCGGCCCTCTTCCCAGAAACCAGTTTAAAGTAGGTCC  
 GGGACTGCACCTCACCCGACGAGGACCTGGTGGGACACAGGGCAACCCCTAACCCCTGATTCGTGCC  
 CGTTCCTGGCCCTGGGAGCCAACACTTAGGAGCAGGCAGGACAGGCACCTTTACAGCACCTGTTGGG  
 GATGGGCATGAACTACTGTGTGAGGTACATGGGCTGTGTTGAAGTCTGCAATCAATGAGATCACTGGAT  
 TTTGGAATGAGAACCAGTTACAAGGGAAGCAATAAGTCGCCTGTGTAAGCTGTCCCCGGGGCAAATG  
 GAGCCATTAAGGCAAGCCCTCCAGTTGAGTTCCTATCAACAGTCCTTGGCAAAGTAATCTTCAGTT  
 TTCAGGAATGAATATAAACTGACCATCTCAACATGCAGTCTCACATTGATGAATCTTGACAACCAACAG  
 ATTATTGCAAAATCATCATATGCAGTCTATTTTCATTTGCCTCTGGAGGGGATCCTGATACTACAGACTATG  
 TTGCTACGTAGCTAAAGATCCAGTTAATCAACGAGCCTGTCACATATTGGAATGCCACAATGGAATGCC  
 CCAAGACGTCATAAGTACCATAGGGCAGGCTTTTGAATCCGGTTTAAACAGTACTTGAAAAATCCTTCT  
 TTGAATACTTCTGTGAAAGTGAAGGAGTGCATATTGATAGCCATGCCGAGGAGAGAAGATCATGAAT  
 ATTACAATGAAATTCAGGGAAGCAGCCACCAGTAGGTGGTGTTCAGATATGCGGATCAAAGTTCAAGC  
 CACGGAACAAATGGCTTACTGCCCATACAGTGTGAAAAGTTGTGCTATTTGCCTGGAAACTCCAAGTGC  
 AGCAGTGTATATGAGAACTGTTTGAACAAGCAGGGCAATAGGTAATGTCCATCCAAGAGGGTGCAGT  
 CCCAGCGAGGTACCTCATTATTGAAGCACACGTGCCGAGTGGATCTTTGATGACCCCTGCTACATTAA  
 TACACAGGCTCTTCAAAGTACACCTGGCTCTGCTGGAATCAAAGGTGAGCCCAACCACTGGGGAGCCCA  
 TGGCACTGCGGAAAGGCACCAGAACTGTTGAGCCGGTGCACAGCCAGCCTGCCAGCTCACATTCTT  
 TGCCACACATTAAGCAGCAGCTGTGGAGCGAAGAAATGCTATCATGGCAAGCTGAGCAGGAAGGGCGGAGA  
 GAGCCTCTTGGTAAAGGATGGGGACTTTTTGGTTCGAGAGAGTGAACATCCCCTGGCCAATATGTGCTG  
 AGTGGACTACAGGAGGCAAGCAAAACATCTTCTCCTGGTGGATCCTGAAGGCAAGGTGAGGACCAAGG  
 ATCATGATTTGATAATGTCGGCCACCTTATCAGATACCATATGGATAACAGTTTGCCAATCATCTCCTC  
 TGGAAAGCAAGTAAGCCTTAAACAACAGTGAAGAAAGATAATAATCCAGCACTTTTGCATTCCAACAAA

**ACGCGT**ACGCGGCCGCTCGAGCAGAACTCATCTCAGAAGAGGATCTGGCAGCAAATGATATCCTGGATT  
 ACAAGGATGACGACGATAAGGTTTAA

**Protein Sequence:**

>RC206373 protein sequence  
 Red=Cloning site Green=Tags(s)

MRERQDSLAVLVLVYGLFGHPGMLHRAKYSRFRNESITSLDEGSSGGSVGDKGSPPHPALAPHLPT  
 DATLPSQESPTPLCTLIPRMASMKLANPATLLSLKNFCLGTKEVPRLKLQESRDPGSSGSPSPETSLSRS  
 GTAPPPQQDLVGHRAALTPDSCPLPGGPEPTLRSRQDRHFLQHLLGMGMNYCVRYMGCVEVLQSMRSLD  
 FGMRTQVTREAI SRLCEAVPGANGAIKKRKPVEFLSTVLGKSNLQFSGMNIKLITISTCSLTMNLDNQQ  
 IIANHHMQSISFASGGDPDITDYVAVYAKDPVNQRACHILECHNGMAQDVI STIGQAFELRFKQYLKNPS  
 LNTSCESEEVHIDSHAEEREDHEYYNEIPGKQPPVGGVSDMRIKIQATEQMAYCPIQCEKLCYLPGNSKC  
 SSVYENCLQSRAGNVHPRGVQSQRGTSLLKHTCRVDLFDPCYINTQALQSTPGSAGNQRSAQPLGSP  
 WHCGKAPETVQPGATAQPASSHSLPHIKQQLWSEECYHGKLSRKAESLLVKDGFVRESATSPGQYVL  
 SGLQGGQAKHLLLVDPGKVRTKDHVFDNVGHLIRYHMDNSLPIISSGSEVSLKQPVRKDNPPALLHSNK

**TR**TRPLEQKLISEEDLAANDILDYKDDDDKV

Chromatograms: [https://cdn.origene.com/chromatograms/mk6138\\_h09.zip](https://cdn.origene.com/chromatograms/mk6138_h09.zip)

Restriction Sites: SgfI-MluI

Cloning Scheme:



ACCN: NM\_203349

ORF Size: 1890 bp

OTI Disclaimer: The molecular sequence of this clone aligns with the gene accession number as a point of reference only. However, individual transcript sequences of the same gene can differ through naturally occurring variations (e.g. polymorphisms), each with its own valid existence. This clone is substantially in agreement with the reference, but a complete review of all prevailing variants is recommended prior to use. [More info](#)

OTI Annotation: This clone was engineered to express the complete ORF with an expression tag. Expression varies depending on the nature of the gene.

Components: The ORF clone is ion-exchange column purified and shipped in a 2D barcoded Matrix tube containing 10ug of transfection-ready, dried plasmid DNA (reconstitute with 100 ul of water).

Reconstitution Method:

1. Centrifuge at 5,000xg for 5min.
2. Carefully open the tube and add 100ul of sterile water to dissolve the DNA.
3. Close the tube and incubate for 10 minutes at room temperature.
4. Briefly vortex the tube and then do a quick spin (less than 5000xg) to concentrate the liquid at the bottom.
5. Store the suspended plasmid at -20°C. The DNA is stable for at least one year from date of shipping when stored at -20°C.

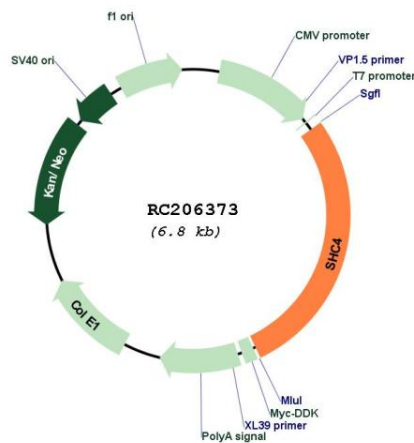
RefSeq: [NM\\_203349.1](#)

RefSeq Size: 4556 bp

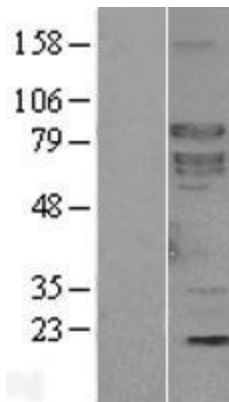
RefSeq ORF: 1893 bp

**Locus ID:** 399694  
**UniProt ID:** [Q6S5L8](#)  
**Cytogenetics:** 15q21.1  
**Protein Pathways:** Chemokine signaling pathway, Chronic myeloid leukemia, ErbB signaling pathway, Focal adhesion, Glioma, Insulin signaling pathway, Natural killer cell mediated cytotoxicity, Neurotrophin signaling pathway  
**MW:** 68.7 kDa  
**Gene Summary:** Activates both Ras-dependent and Ras-independent migratory pathways in melanomas. Contributes to the early phases of agrin-induced tyrosine phosphorylation of CHRNB1. [UniProtKB/Swiss-Prot Function]

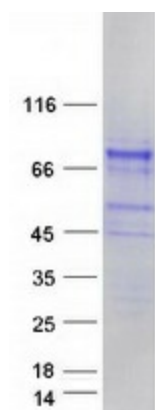
### Product images:



Circular map for RC206373



Western blot validation of overexpression lysate (Cat# [LY403713]) using anti-DDK antibody (Cat# [TA50011-100]). Left: Cell lysates from untransfected HEK293T cells; Right: Cell lysates from HEK293T cells transfected with RC206373 using transfection reagent MegaTran 2.0 (Cat# [TT210002]).



Coomassie blue staining of purified SHC4 protein (Cat# [TP306373]). The protein was produced from HEK293T cells transfected with SHC4 cDNA clone (Cat# RC206373) using MegaTran 2.0 (Cat# [TT210002]).