

Product datasheet for RC206371

TMEM130 (NM_152913) Human Tagged ORF Clone

Product data:

| | |
|---------------------------|---|
| Product Type: | Expression Plasmids |
| Product Name: | TMEM130 (NM_152913) Human Tagged ORF Clone |
| Tag: | Myc-DDK |
| Symbol: | TMEM130 |
| Mammalian Cell Selection: | Neomycin |
| Vector: | pCMV6-Entry (PS100001) |
| E. coli Selection: | Kanamycin (25 ug/mL) |
| ORF Nucleotide Sequence: | >RC206371 ORF sequence Red=Cloning site Blue=ORF Green=Tags(s) |

TTTTGTAATACGACTCACTATAGGGCGGCCGGAATTCGTCGACTGGATCCGGTACCGAGGAGATCTGCCGCCCGATCGCC

ATGGCCAGGCAGTGTGGTCGCGCCTCGGCCGATCCTCTGGCTTGCCTGCCTCCTGCCCTGGGCCCGG
CAGGGTGGCCGAGGCCTGTATGAACTCAATCTACCACCGATAGCCCTGCCACCACGGGAGCGGTGGT
GACCATCTCGCCAGCCTGGTGGCCAAGGACAACGGCAGCCTGGCCCTGCCCGCTGACGCCACCTCTAC
CGCTTCCACTGGATCCACACCCCGTGGTCTTACTGGCAAGATGGAGAAGGGTCTCAGCTCCACCATCC
GTGTGGTCGGCCACGTGCCCGGGAATCCCGGTCTCTGTCTGGGTCACTGCCGCTGACTGCTGGATGTG
CCAGCCTGTGGCCAGGGCTTTGTGGTCTCCCATCACAGAGTTCCTCGTGGGGACCTTGTGTGCC
CAGAACACTTCCCTACCCTGGCCAGCTCCTATCTCACTAAGACCGTCTGAAAGTCTCCTTCTCCTCC
ACGACCCGAGCAACTTCCCAAGACCGCCTTGTCTCTACAGCTGGGACTTCGGGGACGGGACCCAGAT
GGTGAAGACTCCGTGGTCTATTATAACTATTCCATCATCGGGACCTTACCCTGAAGCTCAAAGTG
GTGGCGGAGTGGGAAGAGGTGGAGCCGGATGCCACGAGGGCTGTGAAGCAGAAGACCGGGGACTTCTCCG
CCTCGCTGAAGCTGCAGGAAACCCTTAGAGGCATCCAAGTGTGGGGCCACCCTAATTCAGACCTTCCA
AAAGATGACCGTGACCTTGAATTCCTGGGAGCCCTCCTCTGACTGTGTGCTGGCGTCTCAAGCCTGAG
TGCTCCCGCTGGAGGAAGGGGAGTGCCACCCTGTGTCCGTGGCCAGCACAGCGTACAACCTGACCCACA
CCTTCAGGGACCTGGGGACTACTGCTTACGATCCGGGCGGAGAATATCATCAGCAAGACATCAGTA
CCACAAGATCCAGGTGTGGCCCTCCAGAATCCAGCCGGTGTCTTTGCTTTCCCATGTGCTACACTTATC
ACTGTGATGTTGGCCTTATCATGTACATGACCCTGCGGAATGCCACTCAGCAAAAGGACATGGTGGAGA
ACCCGGAGCCACCCTCTGGGGTCAAGTGTCTGTCAGATGTGTGTGGGCTTTCTTGCTGGAGACTCC
ATCTGAGTACCTGGAATTTGTCGTGAGAACACGGGCTGCTCCCGCCCTCTATAAGTCTGTCAAACCT
TACCCGTG

ACGCGTACGCGGCCGCTCGAGCAGAACTCATCTCAGAAGAGGATCTGGCAGCAAATGATATCCTGGATT
ACAAGGATGACGACGATAAGGTTTAA



[View online »](#)

Protein Sequence: >RC206371 protein sequence
Red=Cloning site Green=Tags(s)

MAQAVWSRLGRILWLACLLPWAPAGVAAGLYELNLTTDSPATTGAVVTISASLVAKDNGSLALPADAHLY
 RFHWIHTPLVL TGKMEKGLSSTIRVVGHVPGFVPSVWVTAADCWMCQPARGFVVLPI TEFLVGDLVVT
 QNTSLPWPSSYLTKTVLKVVSFLLHDPNSFLKLTALFLYSWDFGDGTQMVTEDEVVYNYYSIIGTFTVKLKV
 VAEWEEVEPDATRAVKQKTGDFSASLKLQETLRGIQVLTGIQTFQKMTVTLNFLGSPPLTVCWRLKPE
 CLPLEEGEHPVSVASTAYNLTHFRDPGDYCF SIRAENIISKTHQYHKIQVWPSRIQPAVFAFPATLI
 TVMLAFIMYMLLRNATQQKDMVENPEPPSGVRCQCCQMPFLLETPSEYLEIVRENHGLLPPLYKSVKT
 YTV

TRTRPLEQKLISEEDLAANDILDYKDDDDKV

Chromatograms: https://cdn.origene.com/chromatograms/mk6319_a10.zip

Restriction Sites: SgfI-MluI

Cloning Scheme:



ACCN: NM_152913

ORF Size: 1269 bp

OTI Disclaimer: The molecular sequence of this clone aligns with the gene accession number as a point of reference only. However, individual transcript sequences of the same gene can differ through naturally occurring variations (e.g. polymorphisms), each with its own valid existence. This clone is substantially in agreement with the reference, but a complete review of all prevailing variants is recommended prior to use. [More info](#)

OTI Annotation: This clone was engineered to express the complete ORF with an expression tag. Expression varies depending on the nature of the gene.

Components: The ORF clone is ion-exchange column purified and shipped in a 2D barcoded Matrix tube containing 10ug of transfection-ready, dried plasmid DNA (reconstitute with 100 ul of water).

Reconstitution Method:

1. Centrifuge at 5,000xg for 5min.
2. Carefully open the tube and add 100ul of sterile water to dissolve the DNA.
3. Close the tube and incubate for 10 minutes at room temperature.
4. Briefly vortex the tube and then do a quick spin (less than 5000xg) to concentrate the liquid at the bottom.
5. Store the suspended plasmid at -20°C. The DNA is stable for at least one year from date of shipping when stored at -20°C.

RefSeq: [NM_152913.1](#), [NP_690877.1](#)

RefSeq Size: 3029 bp

RefSeq ORF: 1272 bp

Locus ID: 222865

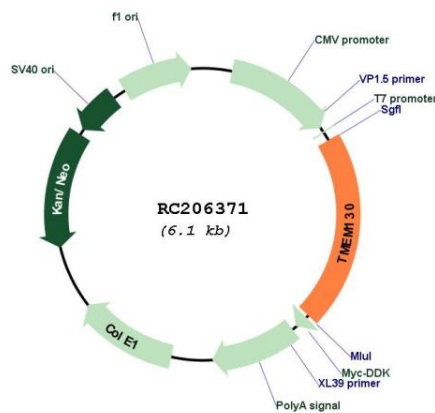
UniProt ID: [Q8N3G9](#)

Cytogenetics: 7q22.1

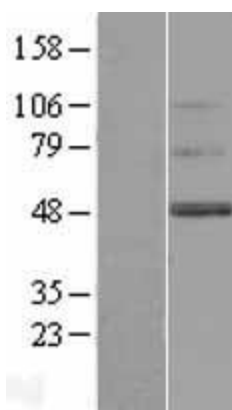
Protein Families: Transmembrane

MW: 47 kDa

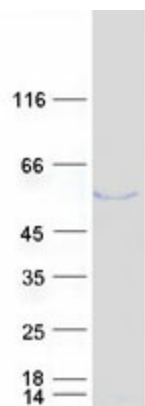
Product images:



Circular map for RC206371



Western blot validation of overexpression lysate (Cat# [LY407211]) using anti-DDK antibody (Cat# [TA50011-100]). Left: Cell lysates from untransfected HEK293T cells; Right: Cell lysates from HEK293T cells transfected with RC206371 using transfection reagent MegaTran 2.0 (Cat# [TT210002]).



Coomassie blue staining of purified TMEM130 protein (Cat# [TP306371]). The protein was produced from HEK293T cells transfected with TMEM130 cDNA clone (Cat# RC206371) using MegaTran 2.0 (Cat# [TT210002]).