

Product datasheet for **RC206370**

SERTM1 (NM_203451) Human Tagged ORF Clone

Product data:

Product Type: Expression Plasmids
Product Name: SERTM1 (NM_203451) Human Tagged ORF Clone
Tag: Myc-DDK
Symbol: SERTM1
Synonyms: C13orf36
Mammalian Cell Selection: Neomycin
Vector: pCMV6-Entry (PS100001)
E. coli Selection: Kanamycin (25 ug/mL)
ORF Nucleotide Sequence: >RC206370 ORF sequence
Red=Cloning site Blue=ORF Green=Tags(s)

TTTTGTAATACGACTCACTATAGGGCGGCCGGAATTCGTCGACTGGATCCGGTACCGAGGAGATCTGCC
GCC**CGATCGCC**

ATGTCTGAACCTGACACTTCTCAGGATTTTCGGGAAGTGTGGAGAATGGAACCTTTCTTGAGCTGTTTC
CCACATCCCTGTCCACGTCAGTGGACCCATCCTCAGGCCACCTGTCAAACGTCTACATCTATGTGCCAT
ATTCTCAGCCTTTTAGCGTTTCTGCTTCTGCTTTTAATCATTGCCCTCCAGAGGCTCAAAAATATCATC
TCCTCCAGTTCTCCTACCCAGGGTATCCAAGCGACGCTGGAAGTCTTTCACCAATTTGGAAGTCTGCA
GCATTTCTCTCAGAGGTCCACTTTTTCAAACCTTTCATCC

ACGCGTACGCGGCCGCTCGAGCAGAAACTCATCTCAGAAGAGGATCTGGCAGCAAATGATATCCTGGATT
ACAAGGATGACGACGATAAGGTTTAA

Protein Sequence: >RC206370 protein sequence
Red=Cloning site Green=Tags(s)
MSEPDTSSGFSGSVENGFLELFPTSLSTSVDPSSGHLSNVYIYVSIFLSLLAFLLLLLIIALQRLKNII
SSSSYPGYPSDAGSSFTNLEVCSSISRSTFSNLSS

TRTRPLEQKLISEEDLAANDILDYKDDDDKV

Chromatograms: https://cdn.origene.com/chromatograms/mk6318_d06.zip

Restriction Sites: SgfI-MluI



[View online »](#)

Cloning Scheme:


ACCN: NM_203451

ORF Size: 321 bp

OTI Disclaimer: The molecular sequence of this clone aligns with the gene accession number as a point of reference only. However, individual transcript sequences of the same gene can differ through naturally occurring variations (e.g. polymorphisms), each with its own valid existence. This clone is substantially in agreement with the reference, but a complete review of all prevailing variants is recommended prior to use. [More info](#)

OTI Annotation: This clone was engineered to express the complete ORF with an expression tag. Expression varies depending on the nature of the gene.

Components: The ORF clone is ion-exchange column purified and shipped in a 2D barcoded Matrix tube containing 10ug of transfection-ready, dried plasmid DNA (reconstitute with 100 ul of water).

- Reconstitution Method:**
1. Centrifuge at 5,000xg for 5min.
 2. Carefully open the tube and add 100ul of sterile water to dissolve the DNA.
 3. Close the tube and incubate for 10 minutes at room temperature.
 4. Briefly vortex the tube and then do a quick spin (less than 5000xg) to concentrate the liquid at the bottom.
 5. Store the suspended plasmid at -20°C. The DNA is stable for at least one year from date of shipping when stored at -20°C.

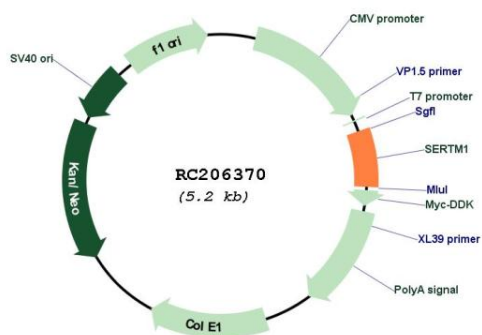
RefSeq: [NM_203451.1](#), [NP_982276.1](#)

RefSeq Size: 3219 bp

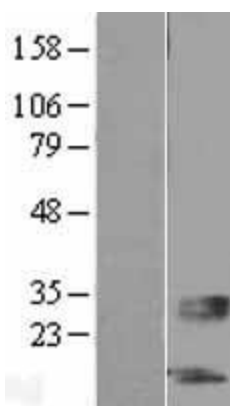
RefSeq ORF: 324 bp

Locus ID: 400120

UniProt ID: [A2A2V5](#)
 Cytogenetics: 13q13.3
 Protein Families: Transmembrane
 MW: 11.4 kDa

Product images:


Circular map for RC206370



Western blot validation of overexpression lysate (Cat# [LY404296]) using anti-DDK antibody (Cat# [TA50011-100]). Left: Cell lysates from untransfected HEK293T cells; Right: Cell lysates from HEK293T cells transfected with RC206370 using transfection reagent MegaTran 2.0 (Cat# [TT210002]).