

Product datasheet for **RC206369**

GPR155 (NM_152529) Human Tagged ORF Clone

Product data:

Product Type:	Expression Plasmids
Product Name:	GPR155 (NM_152529) Human Tagged ORF Clone
Tag:	Myc-DDK
Symbol:	GPR155
Synonyms:	DEP.7; DEPDC3; PGR22
Mammalian Cell Selection:	Neomycin
Vector:	pCMV6-Entry (PS100001)
E. coli Selection:	Kanamycin (25 ug/mL)



[View online »](#)

ORF Nucleotide Sequence:

>RC206369 representing NM_152529
 Red=Cloning site Blue=ORF Green=Tags(s)

TTTTGTAATACGACTCACTATAGGGCGGCCGGAATTCGTCGACTGGATCCGGTACCGAGGAGATCTGCC
 GCC**CGCATCGCC**

ATGAATTCTAATTTACCTGCAGAGAACTTAACCATTGCAGTCAATATGACCAAGACTTTGCCTACAGCAG
 TAACGCATGGATTAAATCCACTAATGACCCACCTTCAATGTCAATTACAAGCCTTTTTCCAGCCTTACT
 GGAATGCTTTGGCATTGCTTTGTGGCTACATAGCAGGAAGGGCCAATGCATAACATCAACCCAGGCC
 AAAGACTAGGAAATTTGTCTCCAGATTTGCACTTCCAGCTTTATTATTCAAAAACATGGTTGACTTTA
 ATTTTTCCAATGTGGACTGGTCTTCTATATAGTATCTTAATTGCCAAAGCTTCTGTATTTTTCTATTGT
 ATGTGTATTAACCTTATTGGTTGCCAGTCTGATAGTCGATTTAGCAAAGCTGGACTATTCCTATTTTT
 GCTACACAAAAGTAATGACTTTGCATTGGGATACCTATAGTTGAAGCTTTATATCAAACATACATCCAG
 AATATCTCCAGTACATTTATTTGGTGGCACCAATATCTCTTATGATGTTAAACCTATAGGGTTATTTT
 CTGTGAAATCCAAAAGTGAAAGACACTCAAAATGCTTCTCAAAATAAAATAAAATTTGGGACTCGGA
 CTCTCGCTGATTACAGAACCCAAATAGTATTTATGGTCTTCATTGGCATCGCCTCAATTTTATCTTG
 ATCGAAAGGTACCTGTATATGTCGAAAATTTCTTGATGGACTTGGAATTTCTTTTTCTGGATCAGCCCT
 ATTTTATCTTGGTCTCACGATGGTGGGAAAAATAAAGAGACTGAAGAAGTCGGCATTGTAGTACTAATT
 CTTCTCATCACAGCTAAACTTCTGGTGTGCCACTTCTGTGCAGAGAAATGGTGGAACTCTTGGACAAGG
 GCGACAGTGTGGTGAACCATACAAGTTTATCAAATATGCATTTCTGTATGGTGTATTTCTGTAGCACC
 AGGAGTGGCTATCTTTGCAACACAATCAACATGGAAGTAGAAATATAACCTCAGGGATGGTGATAAGC
 ACATTTGTGTCTGCTCCCATCATGTACGTTTCTGCCTGGTACTGACCTTCCCACTATGGACCCTAAGC
 CATTTGGCATATGCCATCCAGAATGTTAGTTTTGATATAAGTATTGTCAGCCTGATCTCTTGATCTGGTC
 TCTGGCTATTCTCTTTTGGAGTAAGAAATATAAACAGCTTCTCTCATATGCTTACAACATAATTTACTCATT
 GCTCAGTCTATTGCTGTGCTGGAATGATGATATGGAATTTTGTAAAGAAAAAATTTTGTGGACAAA
 TTTTGGTGTGTTCTATTGTACAGCTCCCTCTATAGCACCTACCTGTGGACAGGCCCTTCTAGCAATTTCT
 TTTGTTCTTTTAAAAAGCGAGAGAGGGTACAAATTCCTGTTGGAATAATCATAATATCTGGCTGGGGA
 ATTCTGCTCTCCTTGTGGTGTCTTTTGATAACTGGAAAACACAATGGAGATAGCATTGACTCAGCCT
 TCTTTTATGGAAGAACAAGATGATCACCACAGCAGTACCCTGTTCTGCAGCATCTGATAGCTGGCAT
 ATCCCTCATGTGCATGAACCAGACTGCCAAGCAGGAAGCTATGAAGTTTCGATCAGTCTCAGAGCCAC
 AAAGTGGTGGAGCCTGGAATACTGCTTTTGGAGAGTCCAGCACCAGTAAATGAACCAGAATTTTTTA
 CAAGCTCTATTCCAGAAACAAGTTGCTGCTCCTGCTCCATGGGAAATGGTGAATTACACTGCCCATCAAT
 AGAGCCAATAGCAACACAAGCACCAGTGAACCTGTGATTCTTCTGTTGAGAAAAACAATCATTGTGTG
 AGTCGCTGTAACCTCCAGAGCTGCATATTAGCCAGGAAGAAGAACAGTATCTACAGAGTGGAGACCAGC
 AACTGACCCGACATGTGTTGCTGTGTTACTTCTCATATTGGCCTGTTCCGCTAATCTTTCCAGTTGTTT
 ATGGTGGCTATTAACCAAGAGCCTGGAAGACTTTATGTTGAGTTACAGTTTTTCTGTGCCGTGTTTAACT
 TTTGGTCAGGGATTTATTTCTTTGGAATCTTTGGATTAGATAAACATTTAATCATCCTGCCTTTCAAAA
 GAAGACTTGAATTCCTATGGAACAATAAAGACACAGCAGAAAACAGGGATTCTCCTGTTTCAGAGGAAAT
 AAAAATGACCTGTCAACAATTTATCCATTATCACCGTGACCTCTGTATCCGAAACATTGTCAAAGAAAGA
 AGGTGTGGTGCAAAAGACTTCTGCTGGAATTTCTGTGGCTGTGACCTGGTGGAGCTGCTAATTGAAGTCG
 GCCTTGCCTCCGACCGTGGTGAAGCTGTGATATACGGAGACAGGCTGGTACAAGGGGGAGTCATCCAACA
 TATTACCAATGAGTATGAATTCGGGATGAGTACTTGTTTTACAGATTTCTTCAAAGAGTCTGAAACAG
 AGTCTCTGCTATTAATGCAAACACTCTCCAACAGGAAAGATATAAAGAAATTGAGCATTATCCCCAC
 CCTCACATTCCCCTAAGACC

ACGCGTACGCGGCCGCTCGAGCAGAACTCATCTCAGAAGAGGATCTGGCAGCAATGATATCTGGATT
 ACAAGGATGACGACGATAAGGTTTAA

Protein Sequence: >RC206369 representing NM_152529
Red=Cloning site Green=Tags(s)

MNSNLP AENL TIAVNM TKLPTAV THGFNSTNDPPSMSITRLFPALLECFGIVLCGYIAGRANVITSTQA
 KGLGNFVSRFALPALLFKNMVLNFSNVDWSFLYSILIAKASVFFIVCVLTLLVASPDSRFKAGLFP
 ATQSNDFALGYPIVEALYQTTYPEYLQYIYL VAPISLMMLNPIGFI FCEIQKWKDTQNASQNKIKIVGLG
 LLRLV LQNP IVFMVFIGIAFNFI LDRKVPVYVENFLDGLGNSFSGSALFY LGLTMVGKIKRLKKS
 AFVLI LLITAKLLVLP LCREMVELLDKGD SVVNHTSLSNYAFLYGVFPVAPGVAIFATQFNMEVEI
 ITSGMVIS TFVSAPIMYVSAWLLTFPTMDPKPLAYAIQNVSFDISIVSLISLIWLA ILLLSK
 KYQLPHMLTTNLLI AQSIVCAGMMIWNFVKEKNFVGGQILVFVLLYSSLYSTYLWTGLLAISL
 FLLKKRERVQIPVGI IISGWG IPALLVGVLLITGKHNGDSIDSAFFYGKEQMITTAVTLFCS
 ILIAGISLMCMNQT AQAGSYEGFDQSQSH KVV EPGNTAF EESPAVNEPELFTSSIPETS
 C C S C S M G N G E L H C P S I E P I A N T S T S E P V I P S F E K N N H C V
 SRCNSQSCILAQEEEQYLQSGDQQLTRHVLLCLLLIIGLFANLSSCLWLFNQEPGRLYVELQFF
 CAVFN FGQGFISFGIFGLDKHLIILPFKRRLEFLWNNKDTAENRDPVSEEIKMTCQQFIH
 YHRDL CIRNIVKER RCGAKTSAGTFCGCDLVSWLIEVGLASDRGEAVIYGDRLVQGGVIQ
 HITNEYEF RDEYLFYRFLQK SPEQ SPPAINANTLQQERYKEIEHSSPPSHSPKT

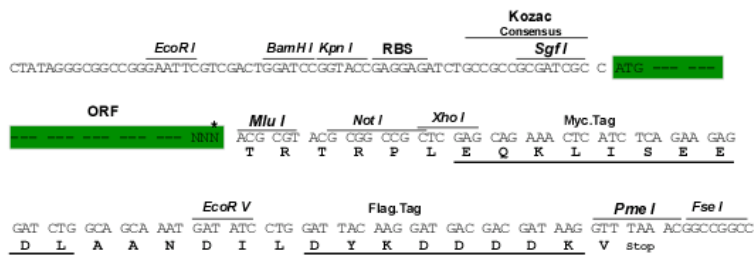
TRTRPLEQKLISEEDLAANDILDYKDDDDKV

Chromatograms: https://cdn.origene.com/chromatograms/mg2605_h05.zip

Restriction Sites: SgfI-MluI

Cloning Scheme:

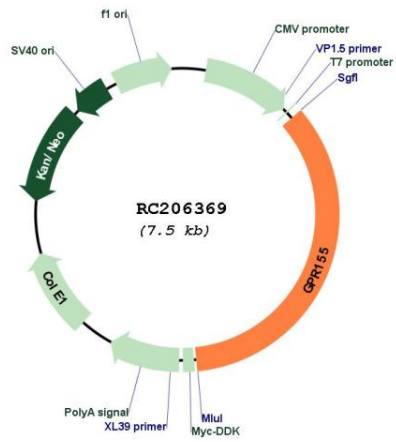
Cloning sites used for ORF Shuttling:



* The last codon before the Stop codon of the ORF

ACCN:	NM_152529
ORF Size:	2610 bp
OTI Disclaimer:	The molecular sequence of this clone aligns with the gene accession number as a point of reference only. However, individual transcript sequences of the same gene can differ through naturally occurring variations (e.g. polymorphisms), each with its own valid existence. This clone is substantially in agreement with the reference, but a complete review of all prevailing variants is recommended prior to use. More info
OTI Annotation:	This clone was engineered to express the complete ORF with an expression tag. Expression varies depending on the nature of the gene.
Components:	The ORF clone is ion-exchange column purified and shipped in a 2D barcoded Matrix tube containing 10ug of transfection-ready, dried plasmid DNA (reconstitute with 100 ul of water).
Reconstitution Method:	<ol style="list-style-type: none">1. Centrifuge at 5,000xg for 5min.2. Carefully open the tube and add 100ul of sterile water to dissolve the DNA.3. Close the tube and incubate for 10 minutes at room temperature.4. Briefly vortex the tube and then do a quick spin (less than 5000xg) to concentrate the liquid at the bottom.5. Store the suspended plasmid at -20°C. The DNA is stable for at least one year from date of shipping when stored at -20°C.
RefSeq:	NM_152529.7
RefSeq Size:	7324 bp
RefSeq ORF:	2613 bp
Locus ID:	151556
UniProt ID:	Q7Z3F1
Cytogenetics:	2q31.1
Domains:	DEP, 7tm_2, Auxin_eff
Protein Families:	Druggable Genome, GPCR, Transmembrane
MW:	96.7 kDa

Product images:



Circular map for RC206369