

Product datasheet for **RC206359**

Aftiphilin (AFTPH) (NM_017657) Human Tagged ORF Clone

Product data:

Product Type:	Expression Plasmids
Product Name:	Aftiphilin (AFTPH) (NM_017657) Human Tagged ORF Clone
Tag:	Myc-DDK
Symbol:	Aftiphilin
Synonyms:	Nbla10388
Mammalian Cell Selection:	Neomycin
Vector:	pCMV6-Entry (PS100001)
E. coli Selection:	Kanamycin (25 ug/mL)



[View online »](#)

ORF Nucleotide Sequence:

>RC206359 ORF sequence
 Red=Cloning site Blue=ORF Green=Tags(s)

TTTTGTAATACGACTCACTATAGGGCGGCCGGAATTCGTGACTGGATCCGGTACCGAGGAGATCTGCC
 GCC**CGGATCGCC**

ATGGAGCCAGACATCATTGCAATGTACTCTTCATCCCCACCACCATTAGACAATGGAGCAGAGGATGATG
 ATGATGATGAATTTGGGAATTTGGTGGTTTTTCAGAAGTTAGCCCTTCTGGTGTAGGGTTTGTGATTT
 CGATACACCAGATTATACTCGTCCCAAGGAAGAGTTTGTACCTCAAACCATTTTATGCCAATTCATGAA
 TTCTCAGAAAATGTAGATAGCCTTACAAGCTTTAAGTCCATTAATAATGGTAATGATAAGGACATCACTG
 CTGAACTTTCTGCTCCTGTGAAAGGACAGTCTGATGTTTTACTTTCTACCACCAGCAAAGAAATAATTTT
 ATCTGAAATGTTAGTACTTCCATTGATGGCATGGAAAGACCAGGAAATTTAAATAAAGTAGTGGAGCAG
 AGACAGAATGTTGGAACACTTAAAAGTTTCTCTCCAGGAGATTTAGAACTAATATGAATGTTGTTTCATC
 AAAACAAGCAGTTAGAGAGCTGCAATGGTAAAAGCCTCCTTGTCTGGAGATTCTAACAAATGGGTTTGC
 AGTGTGGAAACTGTAATCCTCAGGGAACAGATGATCTGGACAATGTAGCTGATTCAAAGGACCGGAAG
 CCTCTTAGCACTCATAGCACTGAGTATAATTTAGACTCTGTACCTAGTCCCTGCTGAGGAATTTGCAGATT
 TTGCCACATTTTCCAAAAGGAAAGGATACAATTAAGAAGAAATAGAATGTGCAGTTTTAAATGATAGAGA
 AGCACTAACCATTCGGGAAAACAATAAAATTAATAGAGTCAATGAACTGAATTTCTGTAAAAGAAGTGGCT
 TTGGGTAGAAGCTTGATAACAAAGGAGACACTGATGGAGAGGATCAGGTTTGTGTTTCAGAAAATAAGCA
 TAGTGACTAACAGAGGTTTCAGTGTGAAAAACAAGGCCCTTCAAACACTGCAACAGGATGAATTTTACA
 GTCAGGTGTTTCAGTCAAAGGCTTGGAGTTTGGTAGACTCAGCTGATAATTCAGAAGCCATTAGGAGAGAA
 CAATGTAAGTGAAGAAAACCTGACTTACTTACTTCTAAATGTGCTCACCTATGCATGATTCTGTAA
 AAATCTGATGATGAAGTTGGTTCTCCCAAAGAAAGTAAAGTTTACTAATTTCCAAAGCCCAAA
 CATTGACCCACAGAAGAAAATGATTTGGATGATTTCTTTAAGTGTAAAAAATGGTGATAGTAGTAATGAC
 TTTGTGACTTGAATGATATCAATGAAGATGATTTTGGTATTTTGGTACTTTGGCTCTGCCAGTGGCT
 CACTCCACCTTTTGTACTGGTACTCAAGATTCAATGAGTGTGCCACTTTTGAAGAGTCTTCAGAGCA
 CTTTCCACATTTTGTGAAACCAGGTGATGACTTTGGAGAATTTGGGGATATAATGCTGTTTCTTGCCAA
 GAGGAGACAATATTAACAAAGTCAAGCTTAAAACAGACTTCTGATAATTTATCAGAAGAATGTCAATTTGG
 CAAGAAAATCTAGTGAACAGGCACTGAACCTGTTGCAAACTTAAAAATGGGCAAGAAGGTGAGATTGG
 ACATTTTGATTCTGTGCCAAATATTCAGGATGACTGCAATGGTTTTCAAGACTCTGATGATTTTGCAGAC
 TTCAGTTCAGCTGGTCTAGCCAAGTTGTAGATTGGAATGCTTTTGGAGTGAACAAAAAGATAGTTGTT
 CTTGGGCTGCTTTTGGAGACCAGCAGGCTACTGAATCTCATCATCGAAAGGAAGCCTGGCAGTACATAG
 GACAGATGAAAATATTGATACTCCAGGAACCCCAAAACGCACAGTGTACCTTCAGCAACTTCCAAGGA
 GCAGTTGCTAGTGGCCATTTACAGGAATCAGCCACTTCAGTTCAGACAGCTTTATTAACCCGCTGGAGC
 GAATTTTTCGAAGCATGTTTTCTTCCACTTGTCCCTGATGCTGAAGAGGAAGTTACTTCCCTGAAGCA
 CTTGCTGGAAACAAGCACTTTGCCAATAAAAACGAGAGAGGCCTTACCTGAAAGTGGGGAATTGCTAGAT
 GTGTGGACTGAGCTACAGGATATCCATGATGCACATGGCTTGAGATACCAGTGGGCGGCTCCCATAGCA
 ACAAGAAGCTTTTGTCTCCTTGGGAATAGACACCCGAAACATTTCTTTCACGGGCAATAAGAAGCAGCC
 TGTTATAGTGCCCATGTATGCAGCAGGATTGGGTATGTTAGAGCCCAAGGAACCACTGAAACCACTT
 TCTGCTGCAGAAAAAATAGCTTCCATCGGTCAGACAGCCACCATGTCACCAGATATGAACACATGTACAT
 CTGATCAGTTCAGGAGTCTCTACCACCCGTCCAGTTTACTGGAGTAGCAGTGGCCTTACTAACCCCTT
 AGATGGTGTGGATCCGGAGTTGTATGAGTTAAACAATTCTAAGCTGGAATCTCCACCTCAAGCCTCAAA
 GTGACTGATGCATTTGCAAGACTCATGTCTACAGTAGAGAAGACAAGCACATCTACCAGTAGGAAACCGA
 AAAGAGAAGAGCACCTAAGTGAAGAAGCTATCAAGGTGGTGGCTTCCCTGACTTAACATTCATGCA
 TGCCAAGGTGTTGATGTTCCAGCCACGTTAACACCTTCCACAAGCTCTCAAGAAAAAGCAGACGGGA

ACGCGTACGCGGCCGCTCGAGCAGAACTCATCTCAGAAGAGGATCTGGCAGCAATGATATCTGGATT
 ACAAGGATGACGACGATAAGGTTTAA

Protein Sequence: >RC206359 protein sequence
 Red=Cloning site Green=Tags(s)

MEPDIIRMYSSSPPLDNGAEDDDDEFGEFGGFSEVSPSGVGFVDFDTPDYTRPKEEFVPSNHFMPIHE
 FSENVDSLTSFKSIKNGNDKIDITAEASAPVKGQSDVLLSTTSKEIISSEMLATSIDGMERPGNLNKVVEQ
 RQNVGTLESFSPGDFRTNMNVVHQNKQLESCNGEKPPCLEILTNGFAVLETVNPQGTDDLDNVADSKGRK
 PLSTHSTEYNLDSVPSAEFFADFATFSKKERIQLEEIECAVLNDREALTIRENNKINRVNELNSVKEVA
 LGRSLDNKGDTDGEDQVCVSEISIVTNRGFSVEKQGLPTLQQDEFLLQSGVQSKAWSLVDSADNSEAIRRE
 QCKTEEKLDLLTSKCAHLCDMSVKTSDDEVGSPKESRKFNTFQSPNIDPTEENDLDDLSVKNNGDSSND
 FVTCNDINEDDFGDFGDFGSASGSTPPFVTGTQDSMSDATFEESSEHFPHFSEPGDDFGEFGDINAVSCQ
 EETILTKSDLKQTSNDLSEECQLARKSSGTGTEPVAKLKNQEGEIGHFDSVPNIQDDCNGFQSDDDFAD
 FSSAGPSQVVDWNAFEDEQKDCSAAFGDQQATESHHRKEAWQSHRTDENIDTPGTPKTHSVPSATSKG
 AVASGHLQESATSVQTALLNRLERIFEACFPSILVPDAEEEVTSKHLLETSTLPKIKTREALPESGELL
 VWTQLQDIDHAHLRYQWGGSHSNKLLSSLGIDTRNILFTGNKKQPVIVPMYAAGLGMLEPTKEPLKPL
 SAAEKIASIGQATMSPDMNTCTSDQFQESLPPVQFDWSSSGLTNPLDGVPEL YELTTSKLEISTSSLK
 VTDAFARLMSTVEKTSTSTRPKKREEHLEEAIKVVAGLPDLTFMHAKVLMFPATLTPSTSSQEKADG

TRTRPLEQKLISEEDLAANDILDYKDDDDKV

Chromatograms: https://cdn.origene.com/chromatograms/mk6290_b03.zip

Restriction Sites: SgfI-MluI

Cloning Scheme:

Cloning sites used for ORF Shuttling:

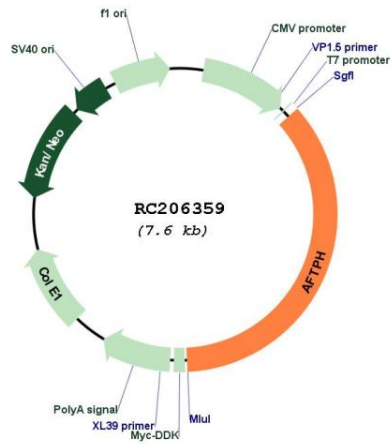


* The last codon before the Stop codon of the ORF

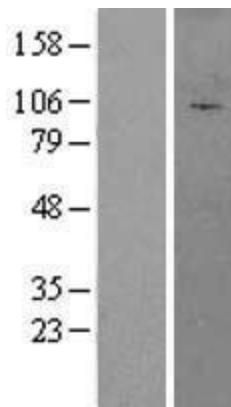
ACCN: NM_017657

ORF Size:	2727 bp
OTI Disclaimer:	The molecular sequence of this clone aligns with the gene accession number as a point of reference only. However, individual transcript sequences of the same gene can differ through naturally occurring variations (e.g. polymorphisms), each with its own valid existence. This clone is substantially in agreement with the reference, but a complete review of all prevailing variants is recommended prior to use. More info
OTI Annotation:	This clone was engineered to express the complete ORF with an expression tag. Expression varies depending on the nature of the gene.
Components:	The ORF clone is ion-exchange column purified and shipped in a 2D barcoded Matrix tube containing 10ug of transfection-ready, dried plasmid DNA (reconstitute with 100 ul of water).
Reconstitution Method:	<ol style="list-style-type: none">1. Centrifuge at 5,000xg for 5min.2. Carefully open the tube and add 100ul of sterile water to dissolve the DNA.3. Close the tube and incubate for 10 minutes at room temperature.4. Briefly vortex the tube and then do a quick spin (less than 5000xg) to concentrate the liquid at the bottom.5. Store the suspended plasmid at -20°C. The DNA is stable for at least one year from date of shipping when stored at -20°C.
RefSeq:	NM_017657.2
RefSeq Size:	4054 bp
RefSeq ORF:	2730 bp
Locus ID:	54812
UniProt ID:	Q6ULP2
Cytogenetics:	2p14
MW:	99.4 kDa
Gene Summary:	May play a role in membrane trafficking.[UniProtKB/Swiss-Prot Function]

Product images:



Circular map for RC206359



Western blot validation of overexpression lysate (Cat# [LY413655]) using anti-DDK antibody (Cat# [TA50011-100]). Left: Cell lysates from untransfected HEK293T cells; Right: Cell lysates from HEK293T cells transfected with RC206359 using transfection reagent MegaTran 2.0 (Cat# [TT210002]).