

Product datasheet for RC206347

C11orf82 (DDIAS) (NM_145018) Human Tagged ORF Clone

Product data:

Product Type:	Expression Plasmids
Product Name:	C11orf82 (DDIAS) (NM_145018) Human Tagged ORF Clone
Tag:	Myc-DDK
Symbol:	C11orf82
Synonyms:	C11orf82; noxin
Mammalian Cell Selection:	Neomycin
Vector:	pCMV6-Entry (PS100001)
E. coli Selection:	Kanamycin (25 ug/mL)
ORF Nucleotide Sequence:	>RC206347 ORF sequence Red=Cloning site Blue=ORF Green=Tags(s)

TTTTGTAATACGACTCACTATAGGGCGCCGGGAATTCGTCGACTGGATCCGGTACCGAGGAGATCTGCC
GCC**CGATCGCC**

ATGAACAGAAGACGAAAAATTTCTTCTAGCCTCAGTACTTGCTCTCCAGAATTCAGTTTTATATATCCAT
CATGTCAGAAGTGCTTCTCTAGGATAATCCTGGTCTCCAAAAGGTCTAATTGTCCAAAATGTGGCTCTAC
TGGTGAATCTGGAAATGCCAATTACAGATACAACTTTCCCTTAAAAGTTGCAGAATCAAACAAATGTTT
GTTATTACTGTATTTGGAAGTTGCTTAGATACATTTTTGGTCTTACTGCCACTGGTTTGCACAGGTACA
TTCAGGATCCTAATAAAATTCAGAAACACTGGACAATGATACAACCTCAGAACTATTAACCTAAAGCAGT
TGAACCTTGCTTTGTTGGACAAAGCTTTATTTTTGGAGTGACGAATTTTAAAACCAACCTGGACAAGGT
TCAGATGCCAGTAACTTCTTACAGCAATGCTCTGACCACAAAAGAAAAGCCAAAGCACTAGTGGCTTGCC
AGATTGTTCTACCAGACCCAGGTATTGCAGGCTTACTGTCTTACTACTTCCATCAACTTTTGCAGAC
TTTTAATTTTCAGGAACTTCAGTGTGACTCTCAGGCACCTAACAACTCACTTACTTGCTTTAGATCACTCA
AATAGTGATCTCAGCAGCACATACTTCTGACAGCACTTCTGATTTTTTCAAGTCTGCAGCAAGGATA
CTTTTTCAAAATCTGGCAGCCATCACTTGAATCACTTGCAATGTTTCACAACTAACAGATAATGATGA
TTTTTCAGCTTCAGAACAAGTAAGGCCCTTTGGTACTCTTCAGCAGAACAGAAAGTCCATCTCCATTGCA
GAGGCCACTGGTCCAGTAGTCCATGATCCCATTGAGGATTCATGGAGCCTTGTTCATATATGGATA
AAAAGAGTACAGCAGAAAAGTTGGGTAAGAAGTGGCTTACAAGCTAAGGAGCTGAGTGCAAGTTCACAG
CAGTCATCATGAAATGGAGTAAATGACTCTAATTTATTCTCTTTGAAAATGCGAGAGCCCTTGAGTCA
AGTAATACAAAATCCTTCCACAGTGCAGTGAAAATTTAAAATAGGTCCCAGCATGAGCTACCATGTTTTT
AGCATCATGGTATAGATACCCCACTAGCCTTCAGAAGAGATCTGCATGTTGTCCACCTTCGTTACTCAG
ACTTGAAGAGACAGCCAGCAGTCCCAGGATGGTGACCTCAAATTTGGGATGATCTGCCATTCTCTGAA
AGCCTGAACAAGTTTCTGGCAGTCTTGAAGTGAGATTGCTGTAACCCAGGCAGATGTCAGTAGTAGGA
AACATCATGTAGATAATGACATTGATAAATTTTCATGCAGACCACAGCAGTTTATCTGTGACTCCCCAGAG
AACTACTGGAGCCCTGCATACACCACCTATAGCTTTAAGATCATCACAAAGTAATAGTCAAAGCAAAGCTG



[View online »](#)

AGCAAAGATGACTTCCTTTCAACTGTAAGGAAATCTAAGTCCTAGTGTGAAAAGGAGTCACAACCAG
 ATAACAAAGTAGAGGCTGTCTCTGTAATCATAATGGAAGAGATATGTCAGAATATTTTTACCGAATCC
 TTACCTGTCAGCTCTGTCTTCACTTTCAAAGATTTAGAAAACAATAGTTACTCTTAAAGAAGACTATCAGA
 ATCTCACCACACAGGGAGAGTGACCATTCTAGTCTAAATAACAAATATTTGAATGGATGTGGAGAAATAT
 CAGTTTCAGAAAATGAATGAAAAGTTGACAACTCTGTGTTATAGGAAGTATAATGATGTCTCTGATCTTTG
 CAAATAGAAAAATAACAATATTGTAGGTGGTCCAAGAACCAAGATGACAGTTTTACAATTTGCAGGAAA
 CTTACATATCCTTTAGAAAATCTTTGCAATAGTCCAATAGAAGTACAAATACATTGAAAAGAAATGCCTT
 GGGGACATATCAATAACAACGTAACACAGAGCTATTCTATTGGTTATGAAGGTAGCTATGATGCCTCTGC
 TGATCTCTTTGATGATATTGCTAAAAGAAATGGACATTGCAACTGAGATTACCAAAAAATCACAGGATATT
 TTGTTAAAATGGGGAACATCTTTGGCAGAAAAGTACCCTTCAGAGTCTGATTTTTCACTGAGATCACTTT
 CTGAAGACTTCATCCAGCCTTCACAAAAATTATCCTTGCAAAGCCTATCTGACTCTAGGCATTCAAGAAC
 ATGCTCTCAACACCTCATTTTTCAATCAGATTCAGAATAAATTTTAAAAATAGTCAAGACTTTGTTCCA
 TGTTACAGTCAACTCCAATTTCCAGGTTCCACCAACAAGAATTCATGGGATAAACAGAGCTTTCAAAA
 AACCTGTATTTTATTCAGATCTTGATGGTAACTATGAAAAATAAGGATTTTCCCTGAAAATGACAAACA
 GCAAGCCAGCCCAAGCTGTCAAAAAATAAAAAACCTAGCCAGAAAATCAGAAGCCCTATTGTATCT
 GGTATTTCAACAACAGAGTTTTCAATCACTACCTTTTCTGAGTGCCATGAAAAGTATGATGATGAAT
 GGGTCCCTCTACCACACAAAAATATTTCTTCAGATATGCTTGGATTCCAAGGCATAGGTCTAGGGAA
 ATGCCTTGCTGCCTATCATTTCCCTGATCAACAAGAGTTACCAAGAAAAGAACTGAAACATATTAGACAA
 GGAACCAATAAAGGTTAATTAAGAAGAAATAAAGAATATGCTTGACAGCAGTTGTTACGAAAAAGAAAA
 CTCATAAATAACTGTAAGTTCAGGCTGGATTTCAAATGTCAGACATTCAAGTCTTAGCAGCACC
 TCAGCTGCACCCTATTCTGGACCTGATTCTTGTTCAGAAGTCAAATGTTGCCTCCATTTTCAGAAAAA
 GGCCACCTTCAGTGTGTGAAACTCGAAGTGCTTGGTCACCTGAATTGTTTTCA

ACGCGTACGCGGCCGCTCGAGCAGAAACTCATCTCAGAAGAGGATCTGGCAGCAAATGATATCCTGGATT
 ACAAGGATGACGACGAT AAGGTTTAA

Protein Sequence:

>RC206347 protein sequence
 Red=Cloning site Green=Tags(s)

MNRRRKFLLASVLLALQNSSFIYPSQCQKCFSRILVSKRSNCPKCGSTGESGNANYRYKLSLKVAVESNKL
 VITVFGSLDFTFGLTATGLHRYIQDPNKIPETLDNDTTQNLTKAVETCFVQSFIFGVTNFENQPGQG
 SDASNFLQCCSDHKRKAALVACQIVLPDPGIAGFTVIDYFHLQLQTFNFRKLQCDSDQAPNNHLLALDHS
 NSDLSSTYSDSTSDFFKSCSKDTFSKFWQPSLEFTCIVSQLTDNDDFSAEQSKAFGLTQQNRKISIA
 EATGSSSCHDPIQDSWSLVSYMDKKSTAEKLGKELGLQAKELSAVHSSHHEIGVNSNLFSLEMREPLES
 SNTKSFHSAVEIKNRSQHELPCFQHHGIDTPTSLQKRSACPPSLLRLEETASSSQDGPQIWDLPFSE
 SLNKFLAVLESEIAVTQADVSSRKHVDNDIDKFHADHSSLVTPQRTTGALHTPPIALRSSQVIVKANC
 SKDDFLFNCKGNLSPSVEKESQPDNKVEAVSVNHNGRDMSEYFLPNPYLSALSSSKDLETIVTLKKTIR
 ISPHRESHDHSSLNKKYLNCGGEISVSEMNEKL T T L CYRKYNDVSDLCKLENKQYCRWSKNQDSDFTICRK
 LTYPLETLCNSPNRSTNTLKEMPWGHINNVTSYSIGYEGSYDASADLFDDIAKEMDIATEITKKSQDI
 LLKWTGSLAESHPSESDFLRSLSEDFIQPSQKLSLQSLSDSRHSRTCSPTPHFQSDSEYNFENSQDFVP
 CSQSTPISGFHQTRIHGINRAFKKPVFYSDDLGNYEKIRIFPENDKQASPSPCKNIKTPSQKIRSPIVS
 GISQPDVFNHYPFACHETDSEWVPTTQKIFPSDMLGFQIGLGLKCLAAHYFPDQQLPRKCLKHIRQ
 GTNKGLIKKKLKNMLAAVVTKKTHKYNCKSSGWI SKCPDIQVLAAPQLHPILGPDSCSEVKCLPFSEK
 GPPSVCETRSASPELFS

TRTRPLEQKLISEEDLAANDILDYKDDDDKV

Chromatograms:

https://cdn.origene.com/chromatograms/mk6236_f03.zip

Restriction Sites:

Sgfl-Mlul

Cloning Scheme:


ACCN: NM_145018

ORF Size: 2994 bp

OTI Disclaimer: The molecular sequence of this clone aligns with the gene accession number as a point of reference only. However, individual transcript sequences of the same gene can differ through naturally occurring variations (e.g. polymorphisms), each with its own valid existence. This clone is substantially in agreement with the reference, but a complete review of all prevailing variants is recommended prior to use. [More info](#)

OTI Annotation: This clone was engineered to express the complete ORF with an expression tag. Expression varies depending on the nature of the gene.

Components: The ORF clone is ion-exchange column purified and shipped in a 2D barcoded Matrix tube containing 10ug of transfection-ready, dried plasmid DNA (reconstitute with 100 ul of water).

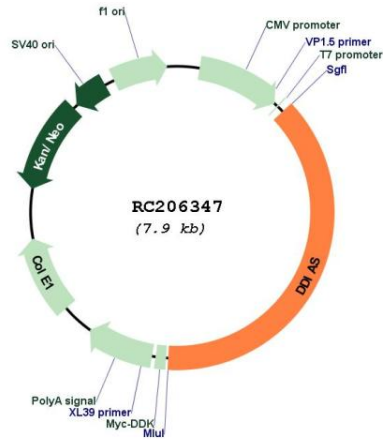
- Reconstitution Method:**
1. Centrifuge at 5,000xg for 5min.
 2. Carefully open the tube and add 100ul of sterile water to dissolve the DNA.
 3. Close the tube and incubate for 10 minutes at room temperature.
 4. Briefly vortex the tube and then do a quick spin (less than 5000xg) to concentrate the liquid at the bottom.
 5. Store the suspended plasmid at -20°C. The DNA is stable for at least one year from date of shipping when stored at -20°C.

RefSeq: [NM_145018.2](#), [NP_659455.2](#)

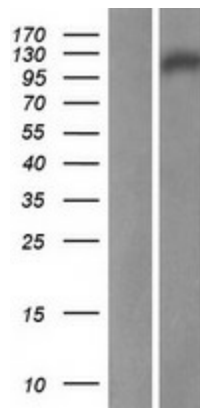
RefSeq Size: 3577 bp

RefSeq ORF: 2997 bp

Locus ID: 220042
UniProt ID: [Q8IXT1](#)
Cytogenetics: 11q14.1
MW: 111.5 kDa
Gene Summary: May be an anti-apoptotic protein involved in DNA repair or cell survival.[UniProtKB/Swiss-Prot Function]

Product images:


Circular map for RC206347



Western blot validation of overexpression lysate (Cat# [LY408080]) using anti-DDK antibody (Cat# [TA50011-100]). Left: Cell lysates from untransfected HEK293T cells; Right: Cell lysates from HEK293T cells transfected with RC206347 using transfection reagent MegaTran 2.0 (Cat# [TT210002]).