

Product datasheet for **RC206343**

ALG1 (NM_019109) Human Tagged ORF Clone

Product data:

Product Type:	Expression Plasmids
Product Name:	ALG1 (NM_019109) Human Tagged ORF Clone
Tag:	Myc-DDK
Symbol:	ALG1
Synonyms:	CDG1K; hMat-1; HMAT1; HMT-1; HMT1; Mat-1; MT-1
Vector:	pCMV6-Entry (PS100001)
E. coli Selection:	Kanamycin (25 ug/mL)
Cell Selection:	Neomycin



[View online »](#)

ORF Nucleotide
Sequence:

>RC206343 ORF sequence
Red=Cloning site Blue=ORF Green=Tags(s)

TTTTGTAATACGACTCACTATAGGGCGGCCGGGAATTCGTCGACTGGATCCGGTACCGAGGAGATCTGCC
GCCGCGATCGCC

ATGGCGCCTCATGCTTGGTCTGCTGGCGCTGTGTCTGCTGCTGCCGCTGCTGCTGGGAGGATGGA
AGCGCTGGCGCCGGGGGGGGCGGCCCGCATGTAGTAGCGGTGGTGTGGGCGACGTGGGCCGAGCCC
CCGTATGCAGTACCACGCGCTGTCGTTGGCCATGCACGGCTTCTCGGTGACCCTCTGGGTTCTGCAAC
TCCAAACCCATGATGAGCTCTTGCAGAACAACAAGATTAGATTGTGGGTTGACAGAACTTCAAGTCT
TTGCAAGTTGGGCCCGAGTTTTCCAGTACGGAGTCAAAGTTGACTTCAAGGCTATGACTTGTGTGAA
GTTGATGTGGAGGGAGCCAGGTGCCTATATCTTCTCCAGAACCCCGAGTCTGCCTAGCATTGCTGTC
TGCTGGTTCGTTGGGCTGCCTTTGTGAAGCAAGCTCGTCATTGACTGGCACAACATGGCTACTCCATCA
TGGGTCTGGTGCATGGCCCAACCATCCCCTCGTTCGCTGGCCAAGTGTACGAGAAGTCTTTGGGCG
CCTGTCCACCTGAACCTGTGTGTACCAATGCTATGCGAGAAGACCTGGCGGATAACTGGCACATCAGG
GCTGTGACCGTCTACGACAAGCCCGCATCTTCTTTAAAGAGACACCTCTGGACCTGCAGCACCGGCTCT
TCATGAAGCTGGGAGCATGCACTCTCCGTTACAGGGCCCGCTCAGAACCTGAGGACCCAGTACGGAGCG
GTCGGCCTTACGGAGCGGGATGCTGGGAGCGGGCTGGTACGCGCTCTCCGTGAGCGGCCAGCCCTGCTG
GTCAGCAGCAGAGCTGGACAGAGGACGAAGACTTCTCCATCCTGCTGGCAGCTTTAGAAAAGTTTGAAC
AACTGACTCTTGTGACACAACCTTCTTCTCTCGTCTGTGTGATAACAGGCAAAGGGCCTATGAGGGA
GTATTATAGCCGCTCATCCACCAGAAGCACTTCCAGCACATCCAGGTCTGCACCCCTGGCTGGAGGCC
GAGGACTACCCCTGCTTCTAGGGTCCGGCGACCTGGGTGTCTGTCTGCACACGTCCTCCAGTGGCCTGG
ACCTGCCATGAAGGTGGTGGACATGTTCCGGTGTGTTTGCCTGTGTGCTGTAAGTCAAGTGT
ACATGAGCTGGTGAACATGAAGAAAATGGCCTGGTCTTTGAGGACTCAGAGGAAGTGGCAGCTCAGCTG
CAGATGCTTTTCTCAAATTTCTGATCTGCGGCAAGCTAAACCAGTTCGGGAAGAACCTGCGGGAGT
CGCAGCAGCTCCGATGGGATGAGAGCTGGGTGCGGACTGTGCTCCCTTTGGTTATGGACACA

AGCGGACCGACGCGTACGCGGCCGCTCGAGCAGAACTCATCTCAGAAGAGGATCTGGCAGCAAATGATATCC
TGGATTACAAGGATGACGACGATAAGGTTAA

Protein Sequence:

>RC206343 protein sequence
Red=Cloning site Green=Tags(s)

MAASCLVLLALCLLLPLLLLGGWKRWRGRARHVAVVLDVGRSPRMQYHALSLAMHGFVTLGFCN
SKPHDELLQNNRIQIVGLTELQSLAVGPRVFQYGVKVVLLQAMYLLWKLWREPGAYIFLQNPPLPSIAV
CWFVGCCLCGSKLVIDWHNYGYSIMGLVHGPNHPLVLLAKWYKFFGRLSHLNLCVTNAMREDLADNWHIR
AVTVYDKPASFFKETPLDLQHRLFMKLGSMHSPFRARSEPDPVTERSAFTERDAGSGLVTRLRERPALL
VSSTSWTEDEDFSILLAALEKFEQLTLDGHNPLSLVCVITGKGPMEYYSRLIHQKHFQHIQVCTPWLEA
EDYPLLLGSADLGVCLHTSSSGLDLPKVVDMFGCCLPVCVAVNFKCLHELKHEENGLVFEDSEELAAQL
QMLFSNFPDPAGKLNQFRKNLRESQQLRWDESWVRTVLPLVMDT

SGPTRTRPLEQKLI SEEDLAANDILDYKDDDDKV

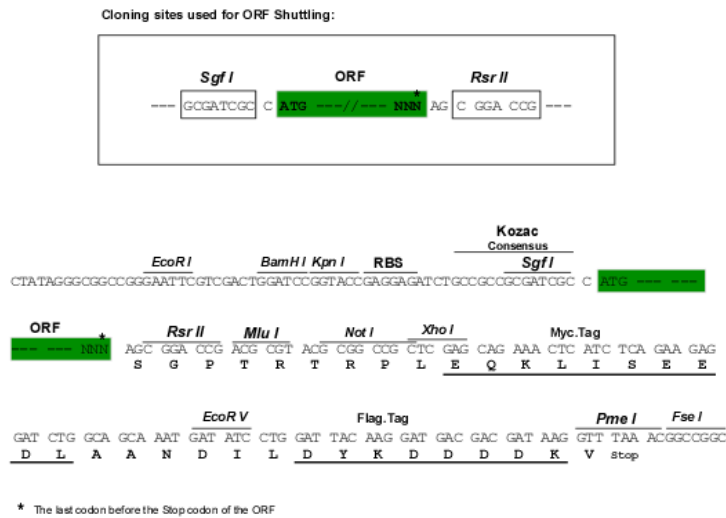
Chromatograms:

https://cdn.origene.com/chromatograms/mk6186_d02.zip

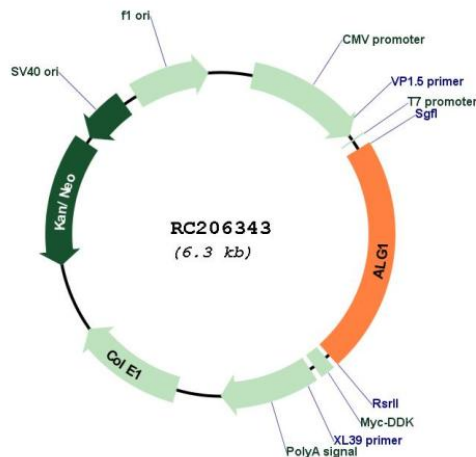
Restriction Sites:

Sgfl-RsrII

Cloning Scheme:



Plasmid Map:



ACCN: NM_019109

ORF Size: 1392 bp

OTI Disclaimer: The molecular sequence of this clone aligns with the gene accession number as a point of reference only. However, individual transcript sequences of the same gene can differ through naturally occurring variations (e.g. polymorphisms), each with its own valid existence. This clone is substantially in agreement with the reference, but a complete review of all prevailing variants is recommended prior to use. [More info](#)

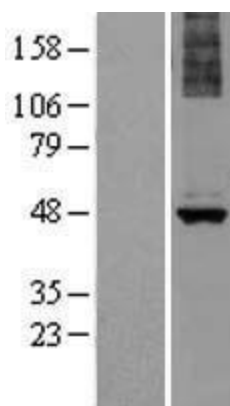
OTI Annotation: This clone was engineered to express the complete ORF with an expression tag. Expression varies depending on the nature of the gene.

RefSeq: [NM_019109.2](#)

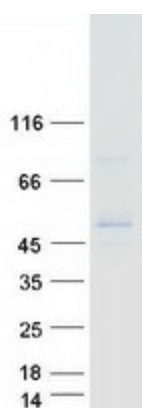
RefSeq Size: 3946 bp

RefSeq ORF:	1395 bp
Locus ID:	56052
Protein Families:	Transmembrane
Protein Pathways:	Metabolic pathways, N-Glycan biosynthesis
MW:	52.6 kDa
Gene Summary:	The enzyme encoded by this gene catalyzes the first mannosylation step in the biosynthesis of lipid-linked oligosaccharides. This gene is mutated in congenital disorder of glycosylation type I _k . [provided by RefSeq, Dec 2008]

Product images:



Western blot validation of overexpression lysate (Cat# [LY402736]) using anti-DDK antibody (Cat# [TA50011-100]). Left: Cell lysates from untransfected HEK293T cells; Right: Cell lysates from HEK293T cells transfected with RC206343 using transfection reagent MegaTran 2.0 (Cat# [TT210002]).



Coomassie blue staining of purified ALG1 protein (Cat# [TP306343]). The protein was produced from HEK293T cells transfected with ALG1 cDNA clone (Cat# RC206343) using MegaTran 2.0 (Cat# [TT210002]).