

Product datasheet for **RC206342**

KIAA1467 (FAM234B) (NM_020853) Human Tagged ORF Clone

Product data:

Product Type:	Expression Plasmids
Product Name:	KIAA1467 (FAM234B) (NM_020853) Human Tagged ORF Clone
Tag:	Myc-DDK
Symbol:	KIAA1467
Synonyms:	KIAA1467
Mammalian Cell Selection:	Neomycin
Vector:	pCMV6-Entry (PS100001)
E. coli Selection:	Kanamycin (25 ug/mL)



[View online »](#)

ORF Nucleotide Sequence:

>RC206342 representing NM_020853
 Red=Cloning site Blue=ORF Green=Tags(s)

TTTTGTAATACGACTCACTATAGGGCGGCCGGAATTCGTCGACTGGATCCGGTACCGAGGAGATCTGCC
 GCC**CGCATCGCC**

ATGGCGACCGTGTCTCCAGGGCGCTCAAGCTGCCGGGAAGAAGAGCCAGACCTAGGGGAGTATGATC
 CACTTACCAGGCTGACAGTGATGAGAGCGAAGACGATCTGGTGCTTAACCTGCAGAAGAATGGAGGGT
 CAAAAATGGGAAGAGTCCTTTGGGAGAAGCGCCAGAACCCTGACTCAGATGCTGAGGTTGCAGAGGCTGCA
 AAGCCACATCTTTCAGAAGTCACCACGGAGGGCTACCCCTCAGAACCCTTGGGGCCTGGAACAGAAGG
 CGGCCCTCCTCCCTGGTGCATATGTGCGCACGTCTGTCTTCTGCTGACTTTGGGGATCTCGATGATCCT
 GGTGCTCCTGTGTCTTCTGATCCCTGTCTCCAGAGATCTGCACAGCACCTGGAGCCGCCACTTG
 GGCTCCAGGGAGGTGGGACCTGTCTCCATTGGAATTGGCTGATGTGAATGGAGATGGCTGCGTGATG
 TGCTTCTCCTTTGTGATGTCAAGGAACGGGAGTGCAGTAGGTGTCTCAAGACCAGCTGCTAATCTTGT
 ATGCCTTCGGGGATGAATGGCAGCACACTGTGGTCTAGTCTTCCCTGAGGAGCTCGAGATATCACA
 TGTTTGGAGCTGATGCCAGGAAGCTTGGCTGAAACCATCTGCCTTGTGACAGGGACACACAAGATGCTCA
 GCGCATTCAATGCAACGTCAGGGAAGCCATTTGGACTTTAAACCCAAACTACTTGTCCAACGGTACCTT
 GGCTGCCCCAGTTGTGGTACTGCCAGACTTGGATGAAGACGGTGTTCGAGACCTTGTGGTTCTGGCCATT
 GGGGAATTGCAGCCAGATCTGTGCTTCTGCTGGTGTCTGGCCGACCGGAAATCCAGTGGGTCGACCTG
 TGAAGTACAACATCGTTGGAGTTGGGAATCTGATTGGTCTCAGGTTTACATCACCACAAATGGGGCTGT
 CTACATCCTGTTGGCTTTGAAATATAACAAGCTGTGCGACTGCGGGACATTTTTGTTCAGGCCAAAAT
 CGAGACAGCTCACCACCTTCTCTGCAGATAGAAGAGCCAGAATGGGAAAAGCGAAGATCCATCAACTGT
 CTGAGCTCATTGATGTTTACAGTGATGGTGTGAACTACTCCAGATGGTGAAGGCACCAGTCCAACTG
 CAGCAACCTTCTGATTACAACCAGACAAAAGCCTTGTGCTGCTTCGGGGGCAAAATCTGACACCTTACTGG
 GCATTGAGACTTCAAGGCCTGCGCAGCCAGCCTACTCCTGGATATTTCACTGATGATCAGACATTAGACT
 TCCTTCTGCAGATACAGGATGGAGTTGGGATGAAAAGATGATGGTTGTGGATGGTACTCTGGCTCCAT
 TGTTTGGAGTTACCGTGTCCGTGTCACATGAAAGAAACGCCAGCCACCTCAGCAGTTACTTCAGACCAG
 AAGTCTGTCTTCTTCTTGGCCGAAGGGCTGTGAGTGCATCTCCCAATTCGATATCATCCTAGGAA
 CTGAGCCGCCAGCCTTACCACCTTACCTCCTGCATCTGCGTTCCCTCCATCCTTCTGGATCTGGC
 CAACACCACCGGCACAGTACGGCTTCAAGGTTGGAATTAACGACCTCTGGAAAGATGCCTTTTATGTT
 ACCAGGACAACAGGGCCAAGCTCCGAAGCCATCCAGCAGCCCTGGTGGTCAAGCAAGCTTAGTCTACGGT
 GGGCACTAATGGAGGGCCAGATGGCTCAGCTACAGGAGTCCACCCCAAAATTTGGCCGTGGGGAGCTGCC
 AAGATTTCTCTAGGATAAAGTTTGTGAAGCTCCCTACGAGATC

ACGCGTACGCGGCCGCTCGAGCAGAACTCATCTCAGAAGAGGATCTGGCAGCAAATGATATCCTGGATT
 ACAAGGATGACGACGATAAGGTTTAA

Protein Sequence:

>RC206342 representing NM_020853
 Red=Cloning site Green=Tags(s)

MATVLSRALKLP GK KSPDLGEYDPLTQADSDESEDDLVLNLQKNGGVKNGKSPLGEAPEPDSAEVAEAA
 KPHLSEVTTEGYPSEPLGGLEQKAASSLVSYVRTSVFLLTLGISMILVLLCAFLIPCPPRDHSTWSRHL
 GSQGGDLSPLELADVNGDGLRDVLLSFVMSRNGSAVGVSRAANLVCLSGMNGSTLWSSLLPEEARDIT
 CLELMPGSLAETICLVGTHKMLSAFNATSGKAIWTLNPNYLSNGTLAAPVVVLPDLDEDGVRDLVVLAI
 GELQPDLCFLLVSGRTGNPVGRPVKYNIVGVGNLIGPQVYITNGAVYILFGFGNIQAVALRDIQVQAQN
 RDSSPPSLQIEEPEWEKRRSINLSELIDVYSDGVELLQMVKAPDNCNLLITTRQSLVLLRGQNLTPYW
 ALRLQGLRSQPTPGYFTDDQTLDFLLQIQDGVGMKMMVVDGDSGIVWSYRAPCHMKETPATSAVTSQD
 KSVFLFWAEGLSAASPNSDIILGTEPPSLHLLYLLHPAFPSILLDLANTTGTVTASEVGINDLWKDAFYV
 TRTTGSPSEGHPAALVSKLSLRWALMEGQMAQLQESTPKIGRGELRRFLSRIKFVEAPYEI

TRTRPLEQKLISEEDLAANDILDYKDDDDKV

Chromatograms: https://cdn.origene.com/chromatograms/mk8102_d04.zip

Restriction Sites: SgfI-MluI

Cloning Scheme:



ACCN: NM_020853

ORF Size: 1866 bp

OTI Disclaimer: The molecular sequence of this clone aligns with the gene accession number as a point of reference only. However, individual transcript sequences of the same gene can differ through naturally occurring variations (e.g. polymorphisms), each with its own valid existence. This clone is substantially in agreement with the reference, but a complete review of all prevailing variants is recommended prior to use. [More info](#)

OTI Annotation: This clone was engineered to express the complete ORF with an expression tag. Expression varies depending on the nature of the gene.

Components: The ORF clone is ion-exchange column purified and shipped in a 2D barcoded Matrix tube containing 10ug of transfection-ready, dried plasmid DNA (reconstitute with 100 ul of water).

Reconstitution Method:

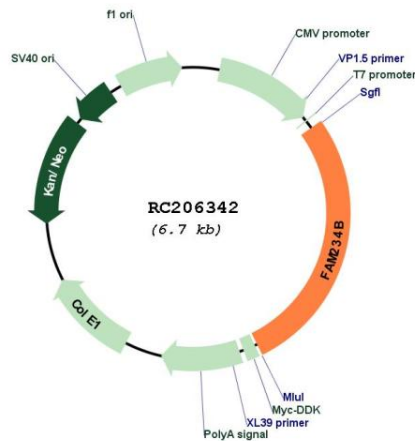
1. Centrifuge at 5,000xg for 5min.
2. Carefully open the tube and add 100ul of sterile water to dissolve the DNA.
3. Close the tube and incubate for 10 minutes at room temperature.
4. Briefly vortex the tube and then do a quick spin (less than 5000xg) to concentrate the liquid at the bottom.
5. Store the suspended plasmid at -20°C. The DNA is stable for at least one year from date of shipping when stored at -20°C.

RefSeq: [NM_020853.1](#), [NP_065904.1](#)

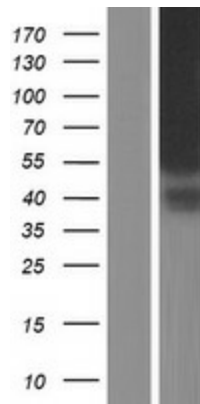
RefSeq Size: 4725 bp

RefSeq ORF: 1869 bp

Locus ID: 57613
UniProt ID: [A2RU67](#)
Cytogenetics: 12p13.1
Protein Families: Druggable Genome, Transmembrane
MW: 67 kDa

Product images:


Circular map for RC206342



Western blot validation of overexpression lysate (Cat# [LY412271]) using anti-DDK antibody (Cat# [TA50011-100]). Left: Cell lysates from untransfected HEK293T cells; Right: Cell lysates from HEK293T cells transfected with RC206342 using transfection reagent MegaTran 2.0 (Cat# [TT210002]).