

Product datasheet for **RC206338**

NR1D2 (NM_005126) Human Tagged ORF Clone

Product data:

Product Type:	Expression Plasmids
Product Name:	NR1D2 (NM_005126) Human Tagged ORF Clone
Tag:	Myc-DDK
Symbol:	NR1D2
Synonyms:	BD73; EAR-1R; REVERBB; REVERBbeta; RVR
Mammalian Cell Selection:	Neomycin
Vector:	pCMV6-Entry (PS100001)
E. coli Selection:	Kanamycin (25 ug/mL)



[View online »](#)

ORF Nucleotide Sequence:

>RC206338 ORF sequence
 Red=Cloning site Blue=ORF Green=Tags(s)

TTTTGTAATACGACTCACTATAGGGCGGCCGGAATTCGTCGACTGGATCCGGTACCGAGGAGATCTGCC
 GCC**CGGATCGCC**

ATGGAGGTGAATGCAGGAGGTGATTGCCTATATCAGTTCCTCCAGCTCAGCCTCAAGCCATGCCTCTT
 GTCACAGTGAGGGTTCTGAGAATAGTTCCAGTCTCCTCCTCTTCTGTTCCATCTTCTCCAAATAGCTC
 TAATTCTGATACCAATGGTAATCCCAAGAAATGGTATCTCGCAATATTGAAGGCATCTTGAAGAATGAT
 CGAATAGATTGTTCTATGAAAACAAGCAATCGAGTGCACCTGGGATGACAAAAAGTCATAGTGGTGTGA
 CAAAATTTAGTGGCATGGTTCTACTGTGTAAGTCTGTGGGGATGTGGCGTCAGGATCCACTATGGAGT
 TCATGCTTGCGAAGGCTGTAAGGGTTTCTTTCCGAGAAGTATTCAACAAAAACATCCAGTACAAGAAGTGC
 CTGAAGAATGAAAAGTGTCTATAATGAGAATGAATAGGAACAGATGTCAGCAATGTCGCTTCAAAAAGT
 GTCTGTCTGTTGGAATGTCAAGAGATGCTGTTCCGGTTTGGTTCGATTCTAAGCGTGAAAAACAGAGGAT
 GCTAATTGAAATGCAAAGTGAATGAAGACCATGATGAACAGCCAGTTCAGTGGTCACTTGCAAAAATGAC
 ACATTAGTAGAACATCATGAACAGACAGCCTTGCCAGCCAGGAACAGCTGCGACCAAGCCCAACTGG
 AGCAAGAAAAACATCAAAAAGCTTCTCCTCCATCTTCTGATTTTGCAAAGGAAGAAGTATTGGCATGGT
 GACCAGAGCTCACAAGGATACCTTTATGTATAATCAAGAGCAGCAAGAAAACTCAGCTGAGAGCATGCAG
 CCCAAGAGAGGAGAACGGATTCGCAAGAACATGGAGCAATATAATTTAAATCATGATCATTGCGGCAATG
 GGCTTAGCAGCCATTTCCCTGTAGTGAGAGCCAGCAGCATCTCAATGGACAGTTCAAAGGGAGGAATAT
 AATGCATTACCCAAATGGTCATGCCATTTGATTGCAATGGACATTGTATGAACCTTCCAATGCTTAT
 ACTCAAAGAGTATGTGATAGAGTCCGATAGATGGATTTTCTCAGAATGAGAACAAGAATAGTTACCTGT
 CCAACACTGGAGGAAGAATGCATCTGGTTTGTCCAATGAGTAAGTCTCCATATGTGGATCCTCATAAATC
 AGGACATGAAATCTGGGAAGAATTTTCGATGAGCTTCACTCCAGCAGTGAAGAAGTGGTGGAAATTTGCA
 AAGCGTATTCTGGGTTCAAGATCTCTCTCAGCATGACCAGGTCAACCTTTTAAAGGCTGGGACTTTTG
 AGGTTTTAATGGTACGGTTCGCATCATTATTTGATGCAAAGGAACGTAAGTGTACCTTTTTAAGTGGAAA
 GAAATATAGTGTGGATGATTTACTCAATGGGAGCAGGGATCTGCTAAACTCTATGTTGAATTTAGT
 GAGAAGCTAAATGCCCTCAACTTAGTGATGAAGAGATGAGTTTGTTTACAGCTGTTGCTCGTATCTG
 CAGATCGATCTGGAATAGAAAACGTCAACTCTGTGGAGGCTTTCAGGAAACTCTCATTGCTGACTAAG
 GACCTTAATAATGAAAAACCATCAAAATGAGGCCTCTATTTTACAAAAGTCTTCTAAAGTTGCCAGAT
 CTTGATCTTTAAACAACATGCACTCTGAGGAGCTTTGGCCTTAAAGTTCACCCT

ACGCGTACGCGGCCGCTCGAGCAGAAACTCATCTCAGAAGAGGATCTGGCAGCAAATGATATCCTGGATT
 ACAAGGATGACGACGATAAGGTTTAA

Protein Sequence:

>RC206338 protein sequence
 Red=Cloning site Green=Tags(s)

MEVNAGGVIAYISSSSASSSHASCHSEGENSFQSSSSVSPSPNSNSDTNGNPKNGDLANIEGILKND
 RIDCSMKTSKSSAPGMTKSHSGVTKFSGMVLLCKVCGDVASGFHYGVHACEGCKGFFRRSIQQNIQYKCC
 LKNENCSIMRMNRNRCQQCRFKKCLSVGMSRDVRFGRIPKREKQRMLEMQSAMKTMMSQFSGHLQND
 TLVEHHEQTALPAQEQLRPKPQLEQENIKSSPPSSDFAKEEVIGMVTTRAHKDTFMYNQEQQENSAESMQ
 PKRGERIRKNMEQYNLNHDHCGNGLSSHFPCESESQQLHNGQFKGRNIMHYPNGHAICIANGHCMNFSNAY
 TQRVCDRVPIDGFSQENENKNSYLCNTGGRMHLVCPMSKSPYVDPHKSQHEIWEFSSMSFTPAVKEVVEFA
 KRIPGFRDLSQHDQVNLKAGTFEVLMVRFASLFDKERTVTFLSGKKYSVDDLHSMGAGDLLNSMFEFS
 EKLNALQLSDEEMSLFTAVVLVSADRSIENVNSVEALQETLIRALRTLIMKNHPNEASIFTKLLKLPLD
 LRSLNNMHSEELLAFKVHP

TRTRPLEQKLISEEDLAANDILDYKDDDDKV

Chromatograms:

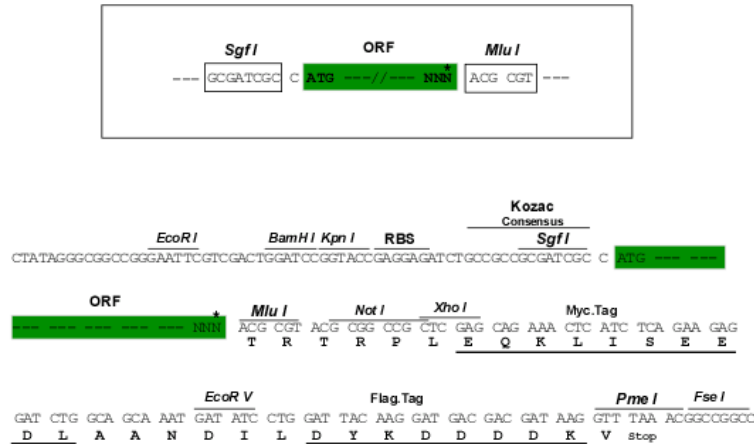
https://cdn.origene.com/chromatograms/mk6279_h12.zip

Restriction Sites:

Sgfl-Mlul

Cloning Scheme:

Cloning sites used for ORF Shutting:



* The last codon before the Stop codon of the ORF

ACCN:

NM_005126

ORF Size:

1737 bp

OTI Disclaimer:

Due to the inherent nature of this plasmid, standard methods to replicate additional amounts of DNA in E. coli are highly likely to result in mutations and/or rearrangements. Therefore, OriGene does not guarantee the capability to replicate this plasmid DNA. Additional amounts of DNA can be purchased from OriGene with batch-specific, full-sequence verification at a reduced cost. Please contact our customer care team at custsupport@origene.com or by calling 301.340.3188 option 3 for pricing and delivery.

The molecular sequence of this clone aligns with the gene accession number as a point of reference only. However, individual transcript sequences of the same gene can differ through naturally occurring variations (e.g. polymorphisms), each with its own valid existence. This clone is substantially in agreement with the reference, but a complete review of all prevailing variants is recommended prior to use. [More info](#)

OTI Annotation:

This clone was engineered to express the complete ORF with an expression tag. Expression varies depending on the nature of the gene.

Components:

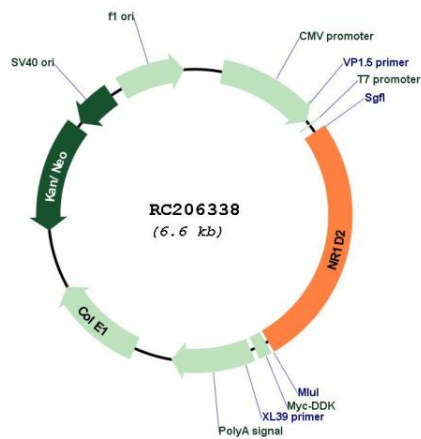
The ORF clone is ion-exchange column purified and shipped in a 2D barcoded Matrix tube containing 10ug of transfection-ready, dried plasmid DNA (reconstitute with 100 ul of water).

Reconstitution Method:

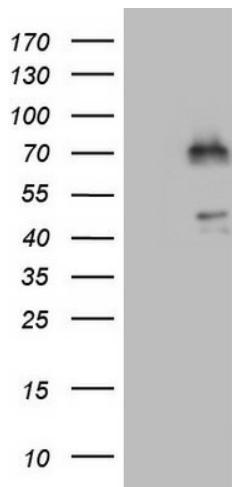
1. Centrifuge at 5,000xg for 5min.
2. Carefully open the tube and add 100ul of sterile water to dissolve the DNA.
3. Close the tube and incubate for 10 minutes at room temperature.
4. Briefly vortex the tube and then do a quick spin (less than 5000xg) to concentrate the liquid at the bottom.
5. Store the suspended plasmid at -20°C. The DNA is stable for at least one year from date of shipping when stored at -20°C.

RefSeq:	<u>NM_005126.3</u>
RefSeq Size:	5268 bp
RefSeq ORF:	1740 bp
Locus ID:	9975
UniProt ID:	<u>Q14995</u>
Cytogenetics:	3p24.2
Domains:	HOLI, zf-C4
Protein Families:	Druggable Genome, Nuclear Hormone Receptor, Transcription Factors
MW:	64.7 kDa
Gene Summary:	This gene encodes a member of the nuclear hormone receptor family, specifically the NR1 subfamily of receptors. The encoded protein functions as a transcriptional repressor and may play a role in circadian rhythms and carbohydrate and lipid metabolism. Alternatively spliced transcript variants have been described. [provided by RefSeq, Feb 2009]

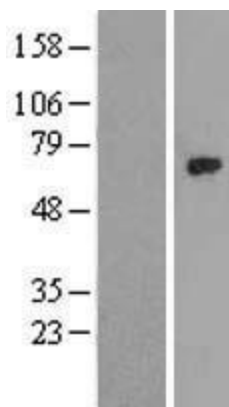
Product images:



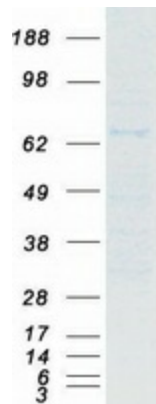
Circular map for RC206338



HEK293T cells were transfected with the pCMV6-ENTRY control (Cat# [PS100001], Left lane) or pCMV6-ENTRY NR1D2 (Cat# RC206338, Right lane) cDNA for 48 hrs and lysed. Equivalent amounts of cell lysates (5 ug per lane) were separated by SDS-PAGE and immunoblotted with anti-NR1D2 (Cat# [TA806588]). Positive lysates [LY417483] (100ug) and [LC417483] (20ug) can be purchased separately from OriGene.



Western blot validation of overexpression lysate (Cat# [LY417483]) using anti-DDK antibody (Cat# [TA50011-100]). Left: Cell lysates from untransfected HEK293T cells; Right: Cell lysates from HEK293T cells transfected with RC206338 using transfection reagent MegaTran 2.0 (Cat# [TT210002]).



Coomassie blue staining of purified NR1D2 protein (Cat# [TP306338]). The protein was produced from HEK293T cells transfected with NR1D2 cDNA clone (Cat# RC206338) using MegaTran 2.0 (Cat# [TT210002]).