

Product datasheet for **RC206337**

MOB4A (MOB1B) (NM_173468) Human Tagged ORF Clone

Product data:

Product Type:	Expression Plasmids
Product Name:	MOB4A (MOB1B) (NM_173468) Human Tagged ORF Clone
Tag:	Myc-DDK
Symbol:	MOB4A
Synonyms:	MATS2; MOB4A; MOBKL1A
Mammalian Cell Selection:	Neomycin
Vector:	pCMV6-Entry (PS100001)
E. coli Selection:	Kanamycin (25 ug/mL)
ORF Nucleotide Sequence:	>RC206337 ORF sequence Red=Cloning site Blue=ORF Green=Tags(s)

TTTTGTAATACGACTCACTATAGGGCGGCCGGAATTCGTCGACTGGATCCGGTACCGAGGAGATCTGCC
 GCC**CGATCGCC**

ATGAGCTTCTTGTGGTAGTCGCTCTTCTAAACTTTTAAACCAAAGAAGAACATTCCAGAGGGTTCTC
 ACCAGTATGAGCTCTTAAACACGCAGAAGCCACACTTGGCAGTGGCAACCTTCGGATGGCTGTCATGCT
 TCCTGAAGGGGAAGATCTCAATGAATGGGTTCAGTTAACTGTGGATTTCTTCAATCAGATCAACATG
 CTTTATGGAATATCACAGACTTCTGTACAGAAGAGAGTTGTCCAGTGATGTCAGCTGGCCAAATATG
 AGTATCATTGGGCAGATGGAACGAACATAAAGAAACCTATTAAGTGCTCTGCACCAAAGTATATTGATTA
 CTTGATGACTTGGGTTCAGGACCAAGTTGGATGATGAGACGTTATTTCCATCAAAAATTGGTGTCCTGTC
 CCAAAGAATTTTCATGTCTGTGGCAAACTATACTCAAACGCCTCTTTAGGGTTTATGCTCACATTTATC
 ATCAGCATTTTGACCCTGTGATCCAGCTTCAGGAGGAAGCACATCTAAATACATCTTTCAAGCACTTTAT
 TTTTTTGTCCAGGAATTCAACCTTATTGATAGAAGAGAACTTGCACTCAAGAACTGATTGAAAAA
 CTCACCTCAAAGACAGA

ACGCGTACGCGGCCGCTCGAGCAGAACTCATCTCAGAAGAGGATCTGGCAGCAATGATATCCTGGATT
 ACAAGGATGACGACGATAAGGTTTAA


[View online »](#)

Protein Sequence: >RC206337 protein sequence
 Red=Cloning site Green=Tags(s)

MSFLFGSRSSKTFKPKNIPEGSHQYELLKHAEATLGSGNLRMAVMLPEGEDLNEWVAVNTVDFFNQINM
 LYGTITDFCTEESCPVMSAGPKYEHWADGTNIKKPIKCSAPKYIDYLMTWVQDQLDDETLFPSKIGVPF
 PKNFMSVAKTILKRLFRVYAHYHQHFDPIQLQEEAHLNTSFKHFIFVQEFNLIDRRELAPLQELIEK
 LTSKDR

TRTRPLEQKLISEEDLAANDILDYKDDDDKV

Chromatograms: https://cdn.origene.com/chromatograms/mk6319_f04.zip

Restriction Sites: SgfI-MluI

Cloning Scheme:



ACCN: NM_173468

ORF Size: 648 bp

OTI Disclaimer: The molecular sequence of this clone aligns with the gene accession number as a point of reference only. However, individual transcript sequences of the same gene can differ through naturally occurring variations (e.g. polymorphisms), each with its own valid existence. This clone is substantially in agreement with the reference, but a complete review of all prevailing variants is recommended prior to use. [More info](#)

OTI Annotation: This clone was engineered to express the complete ORF with an expression tag. Expression varies depending on the nature of the gene.

Components: The ORF clone is ion-exchange column purified and shipped in a 2D barcoded Matrix tube containing 10ug of transfection-ready, dried plasmid DNA (reconstitute with 100 ul of water).

Reconstitution Method:

1. Centrifuge at 5,000xg for 5min.
2. Carefully open the tube and add 100ul of sterile water to dissolve the DNA.
3. Close the tube and incubate for 10 minutes at room temperature.
4. Briefly vortex the tube and then do a quick spin (less than 5000xg) to concentrate the liquid at the bottom.
5. Store the suspended plasmid at -20°C. The DNA is stable for at least one year from date of shipping when stored at -20°C.

Note: Plasmids are not sterile. For experiments where strict sterility is required, filtration with 0.22um filter is required.

RefSeq: [NM_173468.4](#)

RefSeq Size: 6979 bp

RefSeq ORF: 651 bp

Locus ID: 92597

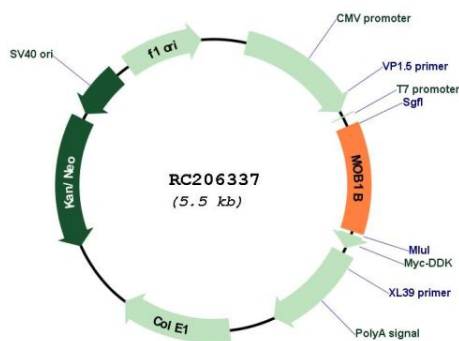
UniProt ID: [Q7L9L4](#)

Cytogenetics: 4q13.3

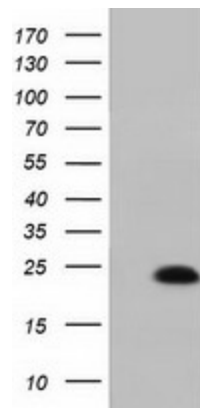
MW: 25.1 kDa

Gene Summary: The protein encoded by this gene is similar to the yeast Mob1 protein. Yeast Mob1 binds Mps1p, a protein kinase essential for spindle pole body duplication and mitotic checkpoint regulation. Three transcript variants encoding different isoforms have been found for this gene. [provided by RefSeq, Sep 2011]

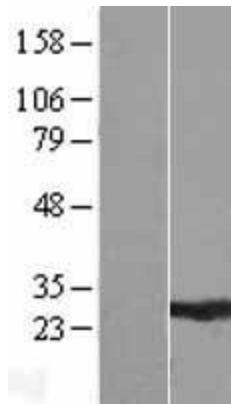
Product images:



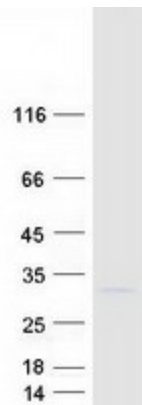
Circular map for RC206337



HEK293T cells were transfected with the pCMV6-ENTRY control (Cat# [PS100001], Left lane) or pCMV6-ENTRY MOBKL1A (Cat# RC206337, Right lane) cDNA for 48 hrs and lysed. Equivalent amounts of cell lysates (5 ug per lane) were separated by SDS-PAGE and immunoblotted with anti-MOBKL1A (Cat# [TA501388]). Positive lysates [LY406621] (100ug) and [LC406621] (20ug) can be purchased separately from OriGene.



Western blot validation of overexpression lysate (Cat# [LY406621]) using anti-DDK antibody (Cat# [TA50011-100]). Left: Cell lysates from untransfected HEK293T cells; Right: Cell lysates from HEK293T cells transfected with RC206337 using transfection reagent MegaTran 2.0 (Cat# [TT210002]).



Coomassie blue staining of purified MOB1B protein (Cat# [TP306337]). The protein was produced from HEK293T cells transfected with MOB1B cDNA clone (Cat# RC206337) using MegaTran 2.0 (Cat# [TT210002]).