

Product datasheet for RC206335

U2AF1L3 (U2AF1L4) (NM_144987) Human Tagged ORF Clone

Product data:

Product Type: Expression Plasmids
Product Name: U2AF1L3 (U2AF1L4) (NM_144987) Human Tagged ORF Clone
Tag: Myc-DDK
Symbol: U2AF1L3
Synonyms: U2AF1-RS3; U2AF1L3; U2AF1L3V1; U2AF1RS3; U2af26
Mammalian Cell Selection: Neomycin
Vector: pCMV6-Entry (PS100001)
E. coli Selection: Kanamycin (25 ug/mL)
ORF Nucleotide Sequence: >RC206335 ORF sequence
 Red=Cloning site Blue=ORF Green=Tags(s)

TTTTGTAATACGACTCACTATAGGGCGCCGGGAATTCGTCGACTGGATCCGGTACCGAGGAGATCTGCC
 GCC**CGATCGCC**

ATGGCTGAATATTTAGCTTCGATATTCGGGACTGAGAAGGACAAGGTTAACTGCTCTTTTACTTTAAGA
 TCGGGTCTGCCGGCACGGGACCGGTGCTCCCGCTTACAACAAGCCGACATTCAGCCAGGAGGTGTT
 CACAGAAGTGCAGGAGAAGTATGGGAGATTGAAGAGATGAATGTGTGCGACAACCTTGGGGACCACGTC
 GTGGGCAACGTCTATGTCAAGTCCGGAGGAGGAGGATGGAGAGCGGGCCGTGGCTGAAGTCAAGTCAAC
 GCTGGTTCAACGGCAGGCTGTGCACGGGAATGTACCCGAGGTGGCTTCTGCAACTTCATGCATCTGCGG
 CCCATTTCCAGAACCTCCAGAGGCAGCTCTATGGGCGGGACCCAGGCGCAGGTACCCCCGAGGTTC
 ATACTGGCCACAATCCCCGAGAGAGGAACCATCGGTGTTCCCCTGATCACTGGCATGGCCGCTTCTGAGG
 CCCTGGCCCCCTTACCCTTACCCCCAACAGGGACAGATGTTCTCTGGCAGGACCTCTCTCAAAGCCCC
 TTCCTCTCTGCCCCATCTTCCAGGCTCCCGGCTCCATAATG

ACGCGTACGCGGCCGCTCGAGCAGAACTCATCTCAGAAGAGGATCTGGCAGCAATGATATCCTGGATT
 ACAAGGATGACGACGATAAGGTTTAA

Protein Sequence: >RC206335 protein sequence
 Red=Cloning site Green=Tags(s)

MAEYLASIFGTEKDKVNCSFYFKIGVCRHGDRC SRLHNKPTFSQEVFTELQEKYGEIEEMNVCDNLGDHV
 VGNVYVKFRREEDGERAVAE LSNRWFNGQAVHGNVPEVASATSCICGPFPRTRSGSSMGGDPGAGHPRGS
 ILATIPERGTIGVPLITGMAASEALAPLPFTPNRDRCSWQDLSSKPPSLSCPILPRLPGSIM

TRTRPLEQKLISEEDLAANDILDYKDDDDKV



[View online »](#)

Chromatograms: https://cdn.origene.com/chromatograms/mk6318_a02.zip

Restriction Sites: SgfI-MluI

Cloning Scheme:



ACCN: NM_144987

ORF Size: 606 bp

OTI Disclaimer: The molecular sequence of this clone aligns with the gene accession number as a point of reference only. However, individual transcript sequences of the same gene can differ through naturally occurring variations (e.g. polymorphisms), each with its own valid existence. This clone is substantially in agreement with the reference, but a complete review of all prevailing variants is recommended prior to use. [More info](#)

OTI Annotation: This clone was engineered to express the complete ORF with an expression tag. Expression varies depending on the nature of the gene.

Components: The ORF clone is ion-exchange column purified and shipped in a 2D barcoded Matrix tube containing 10ug of transfection-ready, dried plasmid DNA (reconstitute with 100 ul of water).

Reconstitution Method:

1. Centrifuge at 5,000xg for 5min.
2. Carefully open the tube and add 100ul of sterile water to dissolve the DNA.
3. Close the tube and incubate for 10 minutes at room temperature.
4. Briefly vortex the tube and then do a quick spin (less than 5000xg) to concentrate the liquid at the bottom.
5. Store the suspended plasmid at -20°C. The DNA is stable for at least one year from date of shipping when stored at -20°C.

Note: Plasmids are not sterile. For experiments where strict sterility is required, filtration with 0.22um filter is required.

RefSeq: [NM_144987.1](#), [NP_659424.1](#)

RefSeq Size: 741 bp

RefSeq ORF: 609 bp

Locus ID: 199746

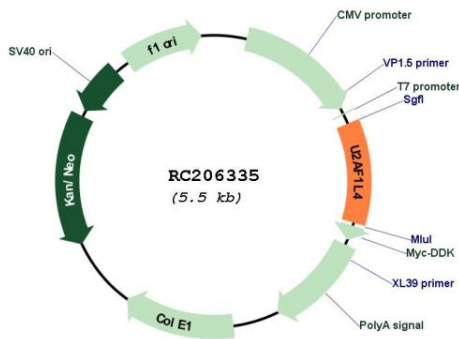
UniProt ID: [Q8WU68](#)

Cytogenetics: 19q13.12

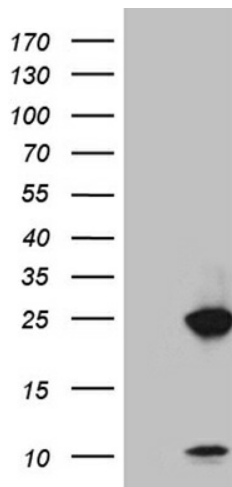
MW: 22 kDa

Gene Summary: RNA-binding protein that function as a pre-mRNA splicing factor. Plays a critical role in both constitutive and enhancer-dependent splicing by mediating protein-protein interactions and protein-RNA interactions required for accurate 3'-splice site selection. Acts by enhancing the binding of U2AF2 to weak pyrimidine tracts. Also participates in the regulation of alternative pre-mRNA splicing. Activates exon 5 skipping of PTPRC during T-cell activation; an event reversed by GFI1. Binds to RNA at the AG dinucleotide at the 3'-splice site (By similarity). Shows a preference for AGC or AGA (By similarity).[UniProtKB/Swiss-Prot Function]

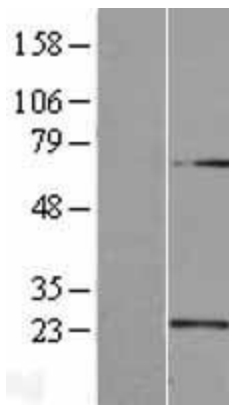
Product images:



Circular map for RC206335



HEK293T cells were transfected with the pCMV-ENTRY control (Cat# [PS100001], Left lane) or pCMV6-ENTRY U2AF1L4 (Cat# RC206335, Right lane) cDNA for 48 hrs and lysed. Equivalent amounts of cell lysates (5 ug per lane) were separated by SDS-PAGE and immunoblotted with anti-U2AF1L4 antibody (Cat# [TA810435]). Positive lysates [LY408126] (100ug) and [LC408126] (20ug) can be purchased separately from OriGene.



Western blot validation of overexpression lysate (Cat# [LY408126]) using anti-DDK antibody (Cat# [TA50011-100]). Left: Cell lysates from untransfected HEK293T cells; Right: Cell lysates from HEK293T cells transfected with RC206335 using transfection reagent MegaTran 2.0 (Cat# [TT210002]).