

## Product datasheet for **RC206331**

### TC2N (NM\_152332) Human Tagged ORF Clone

#### Product data:

Product Type:	Expression Plasmids
Product Name:	TC2N (NM_152332) Human Tagged ORF Clone
Tag:	Myc-DDK
Symbol:	TC2N
Synonyms:	C2CD1; C14orf47; MTAC2D1; Tac2-N
Mammalian Cell Selection:	Neomycin
Vector:	pCMV6-Entry (PS100001)
E. coli Selection:	Kanamycin (25 ug/mL)



[View online »](#)

**ORF Nucleotide Sequence:**

>RC206331 ORF sequence  
 Red=Cloning site Blue=ORF Green=Tags(s)

TTTTGTAATACGACTCACTATAGGGCGGCCGGAATTCGTCGACTGGATCCGGTACCGAGGAGATCTGCC  
 GCC**CGGATCGCC**

ATGGCAACAGAATTTATAAAGAGTTGCTGTGGAGGATGTTTCTATGGTGAACAGAAAAACAACACTTTT  
 CTGTGGAAGAGATTTTAAAGCAGCAGTCCCAAATAGTCAAATGCTACTATCTCTGTACCTCCATTGAC  
 TTCTGTTTCTGTAAGCCTCAGCTTGGCTGTACTGAGGATTATTTGCTTCCAAATTACCATCTGATGGC  
 AAAGAAGTACCATTTGTGGTGCCCAAGTTAAAGTTATCTTACATTCAACCCAGGACACAAGAACTCCTT  
 CACATCTGGAAGAACTTGAAGGATCTGCCAGAGCATCTTTGGAGATCGAAAGGTAGAAGTTCCAGTTC  
 ATCCCAGCACGGACCTAGCTATGATGTGTATAACCCATTCTATATGTATCAGCACATTTACCTGATTTG  
 AGTCGACGCTTCTCCCGTTCAGAAGTGACGAGACTGTATGGATCGGTTTGTGATTTAAGGACGAACA  
 AACTTCCCGTTCCTCCCGTTCAGCAATCTATGTTTGTCTTACAAACTCATCTCAGCGATTCATCCA  
 GAGACATGATTCATTGTCCAGTGTACCCAGTAGTTCTTCTTCAAGGAAAAATTCTCAGGGGAGTAACAGA  
 AGCCTGGATACAATTACTCTATCAGGAGATGAAAGGGACTTTGGGAGACTGAATGTGAAATTGTTTTATA  
 ATTCTTACAGTAGAACAGATCTGGATCACAGTTTACAGTGCAGAGATTTAAGTTGGCCCTCTAGTTATGG  
 AGACACTCCTACTGTTTCTATAAAGGAATACTTACATTGCCCAAACAGTGCATTTCAAATCTTCAGCC  
 AAGGAAGGTTCCAACGCTATTGAATTTATGAAACGTTTGTATTTGCTATTAAACTTCAAATCTACAAA  
 CTGTAAGACTTGTATTTAAGATTCAAACCCAGACTCCCAGGAAGAAAACCATTGGAGAATGCTCAATGTC  
 ACTCAGAACCTTAGCACACAGGAAATGGATTACTCTTTGGATATAACACCACCTTCAAAAATTTCTGTT  
 TGCCATGCAGAACTTGAATTGGGACTTGTTTTCAAGCAGTAAATAGCAGAATTCAGTTACAAATTTCTG  
 AGGCACGGTACCTTCCAAGCTCATCAACACCTCTGACTTTGAGTTTTCGTGAAGTGGAATGTTTAG  
 CTCGGGAGAGTTGATTTATAAGAAAAAGACACGCTTACTGAAGGCTCCAATGGAAGAGTCAAGTGGGGA  
 GAGACTATGATTTTCCACTTATACAGAGTGAAAAAGAAATTGTTTTTCTCATTAAAGCTTTACAGTCGAA  
 GCTCTGTAAGAAGAAAACACTTTGTGGCCAGATTTGGATAAGTGAAGACAGTAATAACATTGAAGCAGT  
 GAACCACTGGAAAGAGACAGTAATAATCCAGAAAAGGTTGTTATCAGGTGGCACAAATTAATCCATCT

**ACGCGT**ACGCGGCCGCTCGAGCAGAAACTCATCTCAGAAGAGGATCTGGCAGCAAATGATATCCTGGATT  
 ACAAGGATGACGACGATAAGGTTTAA

**Protein Sequence:**

>RC206331 protein sequence  
 Red=Cloning site Green=Tags(s)

MATEFIKSCCGGCFYGETEKHNF SVERDFKAAVPNSQNATISVPPLTSVSVKPLGCTEDYLLSKLPSDG  
 KEVPFVVPKFKLSYIQPRTQETPSHLEELGASARASFGDRKVELSSSSQHGPSYDVYVNFYMYQHISPD  
 SRRFPFRSEVTRLYGSVCDLRTNKLPGSPGLSKSMFDL TNSSQRF IQRHDSLSSVPSSSSRKNSQGSNR  
 SLDTITLSGDERDFGRLNVKLFYNSSVEQIWIITVLQCRDL SWPSSYGDPTVSIKILTLPKPVHFKSSA  
 KEGSNAIEFMETFVFAIKLQNLQTVRLVFKIQTPRKTIGECMSLRTLSTQEMDYSLDITPPSKISV  
 CHAELELGTQFQAVNSRIQLQILEARYLPSSSTPLTL SFFVKVGMFSSGELIYKKKTRLLKASNGRVKWG  
 ETMIFPLIQSEKEIVFLIKLYSRSSVRRKHFVGGIWI SEDSNNIEAVNQWKETVINPEKVVIRWHKLNPS

**TR**TRPLEQKLI SEEDLAANDILDYKDDDDKV

**Chromatograms:**

[https://cdn.origene.com/chromatograms/mk6134\\_e10.zip](https://cdn.origene.com/chromatograms/mk6134_e10.zip)

**Restriction Sites:**

Sgfl-MluI

**Cloning Scheme:**

Cloning sites used for ORF Shutting:



\* The last codon before the Stop codon of the ORF

**ACCN:** NM\_152332

**ORF Size:** 1470 bp

**OTI Disclaimer:** The molecular sequence of this clone aligns with the gene accession number as a point of reference only. However, individual transcript sequences of the same gene can differ through naturally occurring variations (e.g. polymorphisms), each with its own valid existence. This clone is substantially in agreement with the reference, but a complete review of all prevailing variants is recommended prior to use. [More info](#)

**OTI Annotation:** This clone was engineered to express the complete ORF with an expression tag. Expression varies depending on the nature of the gene.

**Components:** The ORF clone is ion-exchange column purified and shipped in a 2D barcoded Matrix tube containing 10ug of transfection-ready, dried plasmid DNA (reconstitute with 100 ul of water).

**Reconstitution Method:**

1. Centrifuge at 5,000xg for 5min.
2. Carefully open the tube and add 100ul of sterile water to dissolve the DNA.
3. Close the tube and incubate for 10 minutes at room temperature.
4. Briefly vortex the tube and then do a quick spin (less than 5000xg) to concentrate the liquid at the bottom.
5. Store the suspended plasmid at -20°C. The DNA is stable for at least one year from date of shipping when stored at -20°C.

**RefSeq:** [NM\\_152332.5](#)
**RefSeq Size:** 5222 bp

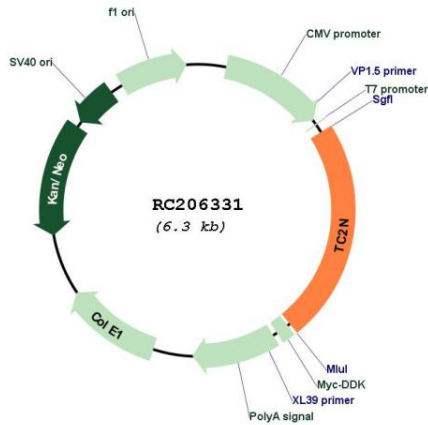
**RefSeq ORF:** 1473 bp

**Locus ID:** 123036

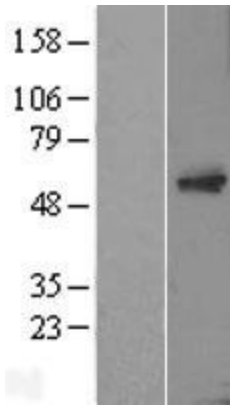
**UniProt ID:** [Q8N9U0](#)
**Cytogenetics:** 14q32.12

Domains: C2  
 MW: 55.3 kDa

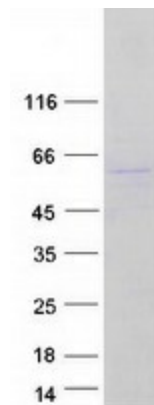
Product images:



Circular map for RC206331



Western blot validation of overexpression lysate (Cat# [LY426967]) using anti-DDK antibody (Cat# [TA50011-100]). Left: Cell lysates from untransfected HEK293T cells; Right: Cell lysates from HEK293T cells transfected with [RC225840] using transfection reagent MegaTran 2.0 (Cat# [TT210002]).



Coomassie blue staining of purified TC2N protein (Cat# [TP306331]). The protein was produced from HEK293T cells transfected with TC2N cDNA clone (Cat# RC206331) using MegaTran 2.0 (Cat# [TT210002]).