

Product datasheet for **RC206329**

MAGEB18 (NM_173699) Human Tagged ORF Clone

Product data:

Product Type:	Expression Plasmids
Product Name:	MAGEB18 (NM_173699) Human Tagged ORF Clone
Tag:	Myc-DDK
Symbol:	MAGEB18
Mammalian Cell Selection:	Neomycin
Vector:	pCMV6-Entry (PS100001)
E. coli Selection:	Kanamycin (25 ug/mL)
ORF Nucleotide Sequence:	>RC206329 ORF sequence Red=Cloning site Blue=ORF Green=Tags(s)

TTTTGTAATACGACTCACTATAGGGCGGCCGGAATTCGTCGACTGGATCCGGTACCGAGGAGATCTGCC
GCC**CGATCGCC**

ATGCCTCGAGGTCAGAAGAGTAAGCTCCGTGCCGTGAGAAACGCCACCAGGCTCGTTGTGAGAATCAGG
ATCTGGGAGCTACGCAGGCCACTGTGGCAGAAGGAGAGTCACCCTCCTCTGCCTATCTTCTTTGGTGA
CAGACCCAGAATTTGCCTGCTGCTGAGACACCTAGCATCCCTGAAGCGCTTCAGGGAGCCCCATCCACC
ACCAATGCTATTGCACCTGTTTCATGCAGTTCAAATGAAGGTGCCAGCAGCCAAGATGAGAAAAGTCTAG
GTTCTCAAGGGAAGCTGAGGGCTGAAAGAAGATCCTTTAAACAAGAAAGTAGTGTGCTGGTGCATT
CTTGCTTCAGAAGTATGAAACGAAAGAGCCAATTACAAAGGGAGATATGATAAAGTTTGTATCAGGAAG
GATAAGTGTCACTTCAATGAGATCCTCAAGAGAGCCTCTGAGCACATGGAGCTGGCACTTGGTGTGATT
TGAAGGAAGTGGATCCCATCAGGCACTACTATGCCTTTTTTCAGCAAATTAGACCTCACCTATGATGAAAC
AACCAGTGATGAAGAAAAAATCCCAAGACTGGCCTCCTGATGATTGCACTGGGTGTGATCTTTCTGAAT
GGCAACCGTGCCCGAGAAGAGGCAGTCTGGAAATATGAATATGATGGGTGTATATGCTGATAGGAAGC
ACTTCTCTATGGGGATCCAGGAAGGTCATGACCAAAGATTTGGTGCAGCTAAAGTACCTGGAGTACCA
GCAAGTGCCCAACAGTGATCCTCCAGCTATGAATTCCTGTGGGGTCCAAGAGCTCACGCTGAAACTAGC
AAGATGAAAGTCTGGAGTTTGTAGCCAAGATACATGATACCGTCCCTAGTGCCTTCCCATCCTGCTATG
AAGAGGCTTTGAGGGATGAGGAACAGAGAACCAGCCAGAGCTGCAGCCAGGGCTCATACTGCTGCCAT
GGCAAATGCACGTTCCAGAACCAGTCTAGCAGCTTCTCCATGCTAAG

ACGCGTACGCGGCCGCTCGAGCAGAAACTCATCTCAGAAGAGGATCTGGCAGCAAATGATATCCTGGATT
ACAAGGATGACGACGATAAGGTTTAA



[View online »](#)

Protein Sequence: >RC206329 protein sequence
Red=Cloning site Green=Tags(s)

MPRGQKSKLRAREKRHQARCENQDLGATQATVAEGESPSSAYLLFGDRPQNLPAETPSIPEALQGAPST
 TNAIAPVSCSSNEGASSQDEKSLGSSREAEGWKEDPLNKKVVSLVHFLQKYETKEPITKGMIFVIRK
 DKCHFNEILKRASEHMELALGVDLKEVDIRHYAFFSKLDLTYDETTSDEEKIPKTGLLMIALGVIFLN
 GNRAPEEAVWEIMMMGVYADRKHFLYGDPKVMTKDLVQLKYLEYQQVPSNDPPRYEFLWGPRHAETS
 KMKVLEFVAKIHDTVPSAFPSCYEEALRDEEQRTQARAAAHAHTAAMANARSRTTSSSFSHAK

TRTRPLEQKLISEEDLAANDILDYKDDDDKV

Chromatograms: https://cdn.origene.com/chromatograms/mk6322_d11.zip

Restriction Sites: SgfI-MluI

Cloning Scheme:



ACCN: NM_173699

ORF Size: 1029 bp

OTI Disclaimer: The molecular sequence of this clone aligns with the gene accession number as a point of reference only. However, individual transcript sequences of the same gene can differ through naturally occurring variations (e.g. polymorphisms), each with its own valid existence. This clone is substantially in agreement with the reference, but a complete review of all prevailing variants is recommended prior to use. [More info](#)

OTI Annotation: This clone was engineered to express the complete ORF with an expression tag. Expression varies depending on the nature of the gene.

Components: The ORF clone is ion-exchange column purified and shipped in a 2D barcoded Matrix tube containing 10ug of transfection-ready, dried plasmid DNA (reconstitute with 100 ul of water).

Reconstitution Method:

1. Centrifuge at 5,000xg for 5min.
2. Carefully open the tube and add 100ul of sterile water to dissolve the DNA.
3. Close the tube and incubate for 10 minutes at room temperature.
4. Briefly vortex the tube and then do a quick spin (less than 5000xg) to concentrate the liquid at the bottom.
5. Store the suspended plasmid at -20°C. The DNA is stable for at least one year from date of shipping when stored at -20°C.

RefSeq: [NM_173699.2](#)

RefSeq Size: 1812 bp

RefSeq ORF: 1032 bp

Locus ID: 286514

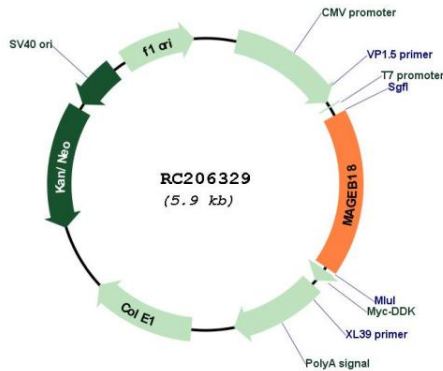
UniProt ID: [Q96M61](#)

Cytogenetics: Xp21.3

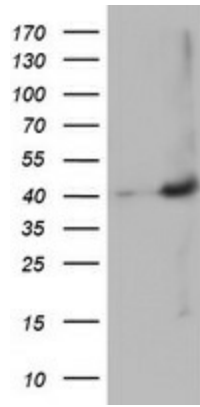
MW: 38.5 kDa

Gene Summary: May enhance ubiquitin ligase activity of RING-type zinc finger-containing E3 ubiquitin-protein ligases. Proposed to act through recruitment and/or stabilization of the Ubl-conjugating enzyme (E2) at the E3:substrate complex.[UniProtKB/Swiss-Prot Function]

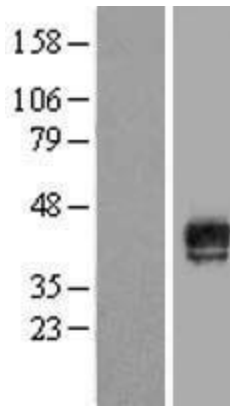
Product images:



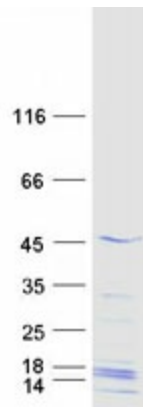
Circular map for RC206329



HEK293T cells were transfected with the pCMV6-ENTRY control (Cat# [PS100001], Left lane) or pCMV6-ENTRY MAGEB18 (Cat# RC206329, Right lane) cDNA for 48 hrs and lysed. Equivalent amounts of cell lysates (5 ug per lane) were separated by SDS-PAGE and immunoblotted with anti-MAGEB18(Cat# [TA502648]). Positive lysates [LY406567] (100ug) and [LC406567] (20ug) can be purchased separately from OriGene.



Western blot validation of overexpression lysate (Cat# [LY406567]) using anti-DDK antibody (Cat# [TA50011-100]). Left: Cell lysates from untransfected HEK293T cells; Right: Cell lysates from HEK293T cells transfected with RC206329 using transfection reagent MegaTran 2.0 (Cat# [TT210002]).



Coomassie blue staining of purified MAGEB18 protein (Cat# [TP306329]). The protein was produced from HEK293T cells transfected with MAGEB18 cDNA clone (Cat# RC206329) using MegaTran 2.0 (Cat# [TT210002]).