

Product datasheet for **RC206328**

ARID3B (NM_006465) Human Tagged ORF Clone

Product data:

Product Type:	Expression Plasmids
Product Name:	ARID3B (NM_006465) Human Tagged ORF Clone
Tag:	Myc-DDK
Symbol:	ARID3B
Synonyms:	BDP; DRIL2
Mammalian Cell Selection:	Neomycin
Vector:	pCMV6-Entry (PS100001)
E. coli Selection:	Kanamycin (25 ug/mL)



[View online »](#)

ORF Nucleotide Sequence:

>RC206328 representing NM_006465
 Red=Cloning site Blue=ORF Green=Tags(s)

TTTTGTAATACGACTCACTATAGGGCGGCCGGAATTCGTCGACTGGATCCGGTACCGAGGAGATCTGCC
 GCC**CGGATCGCC**

ATGGAGCCACTTCAGCAGCAGCAGCAGCAGCAGCAACAACAGAAGCAGCCACACCTGGCTCCTCTGC
 AGATGGATGCCAGAGAGAAGCAGGGCCAGCAGATGAGAGAAGCCAGTTCCTTGTATGCCAAAAGCTGGT
 CACACAGCCGACTCTCCTTTCCGCCACAGCTGGGAGACCTTCTGGCAGCACTCCCTTAGGTCCTTAGCC
 AGAGTTCCACCCACCGCAGCAGTGGCCCAAGTGTTTGAACGGGGCAACATGAACTCAGAGCCTGAGGAAG
 AGGACGGAGGTTTGAAGATGAGGATGGGGATGATGAAGTTGCAGAGGTGGCTGAGAAAGAAACCCAGGC
 TGCTTCAAATATTTTCATGTGCAGAAAGTAGCTCGCCAAGATCCAGAGTGGCACCCATGTCCAATCTA
 CTTCCAGCACCAGGGCTCCACCACATGGACAACAAGCTAAAGAAGACCATAACAAAGATGCTTCCAAGG
 CCTCACCTTCTGTCTCCACAGCAGGACAGCCGAAGTCTGGATGAGCAGCTCAAGCAGAATGGTGG
 TTTGGCCTGGAGTGATGATGCAGATGGAGGCCGGGAAGAGAGATCTCTCGAGATTTTGCAAGCTGTAT
 GAACTGGACGGTATCCTGAAAGGAAAGAGTTCCTGGATGACCTCTTCGCTTTATGCAGAAGAGGGGGA
 CCCCCATCAACCGAATCCCCATCATGGCCAAACAGATCCTGGACCTGTACATGCTGTATAAGCTGGTGAC
 CGAGAAGGGAGGCTGGTGGAGATCATCAACAAGAAGTCTGGAGGGAGATCACCAAAGGCCAAACCTG
 CCCACATCCATCACCAGCGCCGCTTACCCTCAGGACGAGTACATGAAGTATCTGTATGCCTATGAGT
 GTGAGAAGAAAGCCTTGAGTTCCCCAGCCGAGCTCCAGGCAGCAATTGATGGCAACCGCAGGGAGGGCCG
 GCGGCCAGCTACAGCTCCTCCCTCTTTGGCTACTCACCTGTGCGGCTACTGCTGCTGCCGCTGCCGGG
 GCCCTGCCCTTCTCTCCCACCAAGATCCGCTTTCCATCCTTGGGCTTGGCTCCAGCAGTGGTACCA
 ATACCAGTAGCCCTCGGATATCCCCAGCAACCACTCTCAGGAAAGGTGATGGAGCCCCAGTGACAACAGT
 GCCTGTGCCAAATCGTCTGGCTGTGCCCGTACCTTGGCAAGCCAGCAGGCTGGTACTCGGACCGCCGCA
 CTGGAGCAGCTGCGGGAGCGGCTGGAGTCAGGGGAGCCTGCTGAGAAGAAGGCATCGAGGCTGTCTGAGG
 AGGAGCAGCGCCTGGTGCAGCAGGCCTTCCAGCGCAACTTTTTCAGCATGGCACGGCAGCTCCCCATGAA
 GATCAGGATCAACGGCAGGGAAGACAGAGCAGAGGCTCGGCTGCAGCACTGAACCTGACCACGAGTAGC
 ATTGGGAGCATTAAATGTCTGTGGACATCGATGGCACCACCTATGCAGGTGTGCTGTTTGGCCAGAAGC
 CTGTGGTCCACCTCATCACGGGCTGTCTCCCAGAGCCTCGGCAGCAGCGCCAGCAGCAGCAGCAGCTC
 TACTGTTACCAAGTCTACCTCATCCGGGGCACCCCCAGCGCAGAGCCCTCCACCAGCTGGTCCCTC

ACGCGTACGCGGCGGCTCGAGCAGAAACTCATCTCAGAAGAGGATCTGGCAGCAAATGATATCCTGGATT
 ACAAGGATGACGACGATAAGGTTTAA

Protein Sequence:

>RC206328 representing NM_006465
 Red=Cloning site Green=Tags(s)

MEPLQQQQQQQQQKQPHLAPLQMDAREKQGGQMREAQFLYAQKLVTPPTLLSATAGRPSGSTPLGPLA
 RVPPTAAVAQVFERGNMNSEPEEEDGGLEDEDGDDEVAEVAEKETQAASKYFHVQKVARQDPRVAPMSNL
 LPAPGLPPHGQQAQEDHTKDASKASPSVSTAGQPWNLDLQKQNGGLAWSDDADGGRGREISRDFAKLY
 ELDDGPERKEFLDDL FVFMQKRGTPINRIPIMAKQILDLYMLYKLVTEKGLLVEIINKKIWREITKGLNL
 PTSITSAFTLRTQYMKYL YAYECEKKALSSPAELQAAIDGNRREGRRPSYSSSLFGYSPAAATAAAAAG
 APALLSPPKIRFPILGLGSSSGTNTSSPRISPATTLRKGDGAPVTTVPVNPRLAVPVTLASQAGTRTAA
 LEQLRERLESGEPAEKKASRLSEEEQRLVQQAQFQRNFFSMARQLPMKIRINGREDRAEASAAALNLTSS
 IGSINMSVDIDGTTYAGVLFQKPVVHLITGSAPQSLGSSASSSSSSHCSPTSSTSSRGTPSAEPSTSWL

TRTRPLEQKLI SEEDLAANDILDYKDDDDKV

Chromatograms:

https://cdn.origene.com/chromatograms/mk8113_b09.zip

Restriction Sites:

Sgfl-MluI

Cloning Scheme:


ACCN: NM_006465

ORF Size: 1680 bp

OTI Disclaimer: The molecular sequence of this clone aligns with the gene accession number as a point of reference only. However, individual transcript sequences of the same gene can differ through naturally occurring variations (e.g. polymorphisms), each with its own valid existence. This clone is substantially in agreement with the reference, but a complete review of all prevailing variants is recommended prior to use. [More info](#)

OTI Annotation: This clone was engineered to express the complete ORF with an expression tag. Expression varies depending on the nature of the gene.

Components: The ORF clone is ion-exchange column purified and shipped in a 2D barcoded Matrix tube containing 10ug of transfection-ready, dried plasmid DNA (reconstitute with 100 ul of water).

- Reconstitution Method:**
1. Centrifuge at 5,000xg for 5min.
 2. Carefully open the tube and add 100ul of sterile water to dissolve the DNA.
 3. Close the tube and incubate for 10 minutes at room temperature.
 4. Briefly vortex the tube and then do a quick spin (less than 5000xg) to concentrate the liquid at the bottom.
 5. Store the suspended plasmid at -20°C. The DNA is stable for at least one year from date of shipping when stored at -20°C.

RefSeq: [NM_006465.4](#)

RefSeq Size: 4253 bp

RefSeq ORF: 1683 bp

Locus ID: 10620

UniProt ID: [Q8IVW6](#)

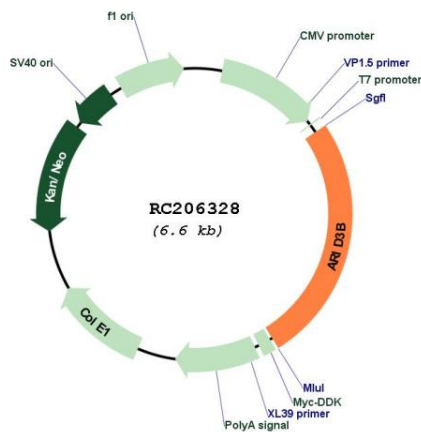
Cytogenetics: 15q24.1

Protein Families: Stem cell - Pluripotency

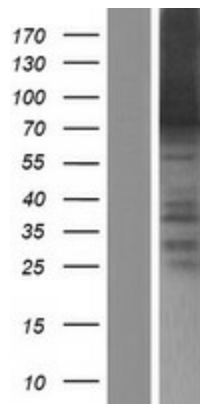
MW: 60.4 kDa

Gene Summary: This gene encodes a member of the ARID (AT-rich interaction domain) family of DNA-binding proteins. The encoded protein is homologous with two proteins that bind to the retinoblastoma gene product, and also with the mouse Bright and Drosophila dead ringer proteins. A pseudogene on chromosome 1p31 exists for this gene. Members of the ARID family have roles in embryonic patterning, cell lineage gene regulation, cell cycle control, transcriptional regulation and possibly in chromatin structure modification. [provided by RefSeq, Jul 2008]

Product images:



Circular map for RC206328



Western blot validation of overexpression lysate (Cat# [LY416624]) using anti-DDK antibody (Cat# [TA50011-100]). Left: Cell lysates from untransfected HEK293T cells; Right: Cell lysates from HEK293T cells transfected with RC206328 using transfection reagent MegaTran 2.0 (Cat# [TT210002]).